

Wealth Creation



EDD LEARNING COHORT

Session 7: What's Next?

March 18, 2026



Objectives



Get to know each other.



Check in on progress on assignments



Consider how you will use wealth creation moving forward.

Principles of Wealth Creation



#1 – **Create wealth**, broadly defined, and aspire to do no harm.

#2 – Root wealth in local people, places and firms through **local ownership, control and influence**.



#3 – Build **lasting livelihoods** by intentionally including people and firms on the economic margins.

Key Concept

Wealth Components: Eight Capitals

Intellectual

- Knowledge and innovation

Individual

- Skills, education, health

Social

- Trust and relationships

Natural

- Natural resources

Built

- Infrastructure

Political

- Influence on decision makers and shapers

Financial

- Savings and investment

Cultural

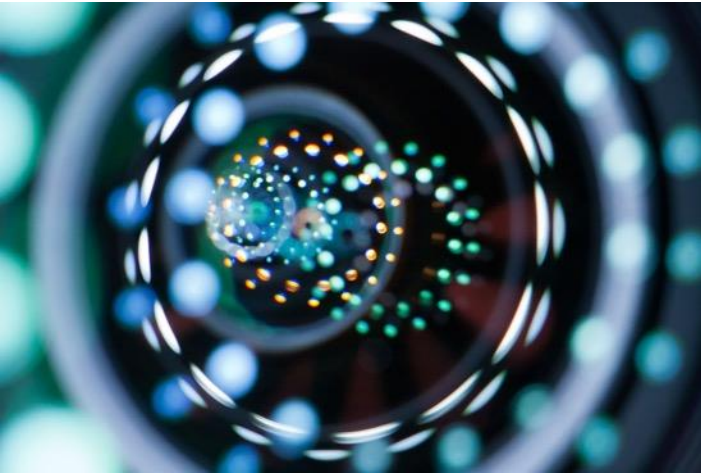
- Traditions, customs and ways of doing

Assessment
Design
Measurement

Looking Through a Wealth Creation Lens: What does this mean?

- Using the eight capitals in your CEDS – asset inventory, SWOT, strategy, metrics.
- Supporting sectors in your region to collaborate for mutual benefit.
- Building partnerships – engaging partners with strengths in different areas, different capitals – to build wealth and keep it local.
- Supporting market opportunities in your region, by bringing partners together to identify what the gaps are and how to fill them through entrepreneurship.
- Viewing all your work through this lens of building wealth, keeping it local and building livelihoods.

The Wealth Creation Lens



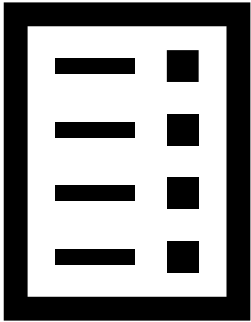
Regional planning and development

Value chain development

Organizational development and strategic planning

Project and program evaluation.

Regional planning/development



Map regional assets across the eight capitals with partners

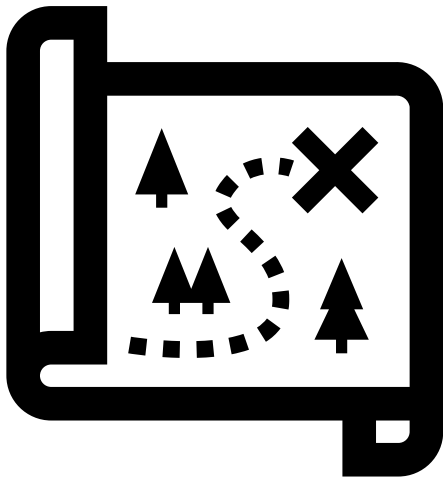
Identify and reduce economic and other leakage from the region

Build strategies around increasing local ownership

Align planning resources and investments around real market opportunities

Formalize relationship-building as part of regional and municipal strategy

Value chain development



Identify and validate real market opportunities that benefit multiple communities/counties

Map the full value chain with partners

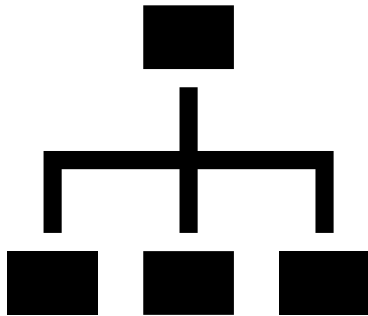
Appoint or support a value chain coordinator

Build pathways for expanded participation of underrepresented groups

Plug leaks and keep more value in the region

Strengthen multiple forms of wealth in the chain.

Organizational development – strategic planning



Use wealth creation as the strategic lens in comprehensive and strategic planning



Assess your organization's strengths and opportunities across the eight capitals.



Align programs to long-term, asset-building outcomes



Prioritize initiatives that create or grow multiple forms of wealth



Build cross-sector partnerships as an asset strategy



Strengthen internal culture around long-term collaboration and asset-based thinking



Program and project evaluation



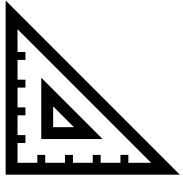
Build a "multiple forms of wealth" dashboard

Measure benefit distribution, not just totals

Evaluate system change, not just project outputs

Use feedback loops or continuous learning cycles to adjust strategy in real time.

Measure how much value stays in the region.



Cohort Timeline

Session	Topic	Dates
1	Intro to Wealth Creation	9/12 and 24
2	Wealth Creation & CEDS	10/8 and 22
3	Understanding Demand	11/5 and 19
4	Value Chain Selection/Identifying a Market Opp.	12/3 and 17
5	Mapping a Value Chain	1/14 and 28
6	Identifying Gaps, Bottlenecks, Underutilized Assets	2/4 and 18
7	What's next?	3/11

Discussion



How do you plan to integrate wealth creation into your work?



What do you need to do this? What kinds of support would be useful?



Evaluation



What went well?



What would you change?

Post-Cohort Assessment

There was a pre-cohort assessment that most if not all of you did.

After this session, I'll be sending out a post-cohort assessment.

Please complete this; EDA will be reviewing how things went.

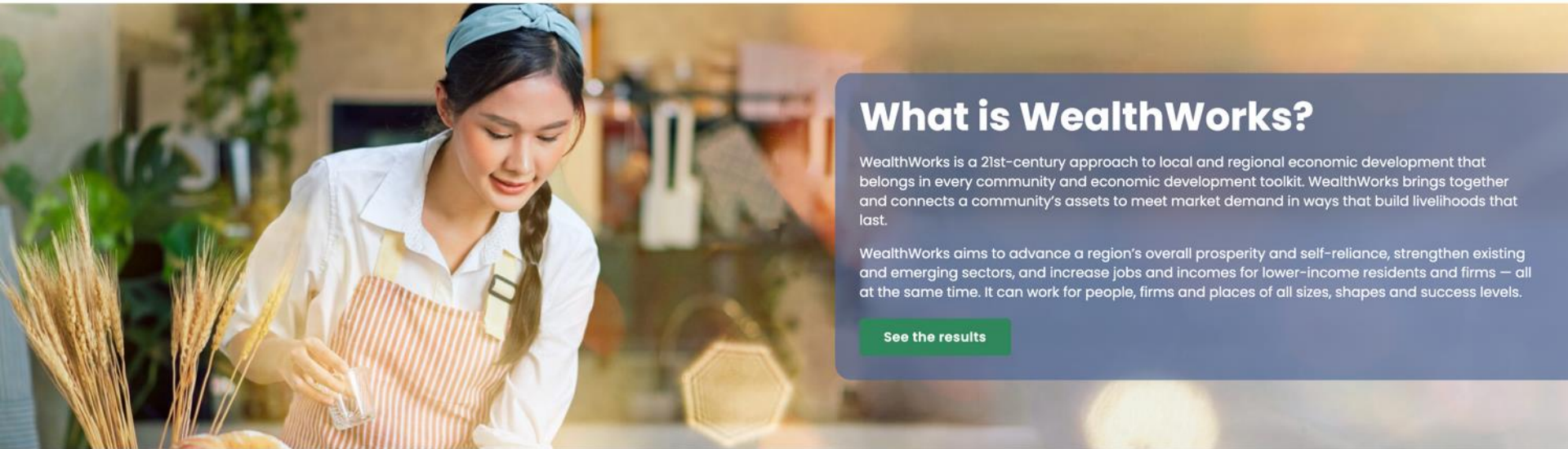
It will be anonymous.

[WealthWorks Website - www.wealthworks.org](http://www.wealthworks.org)

Connecting community assets to market demand to build lasting livelihoods.



[About](#) [The Basics](#) [Success Stories](#) [Resources](#) [Connect](#)



What is WealthWorks?

WealthWorks is a 21st-century approach to local and regional economic development that belongs in every community and economic development toolkit. WealthWorks brings together and connects a community's assets to meet market demand in ways that build livelihoods that last.

WealthWorks aims to advance a region's overall prosperity and self-reliance, strengthen existing and emerging sectors, and increase jobs and incomes for lower-income residents and firms — all at the same time. It can work for people, firms and places of all sizes, shapes and success levels.

[See the results](#)

[The Basics](#)

[Resources](#)

[The Hubs](#)

NADO Wealth Creation Website –

www.nado.org/wealthcreation

Wealth Creation



Wealth Creation Home

Wealth Creation Reports

Blog ▾

Training Materials and Resources

For several years, the NADO Research Foundation has trained EDD staff and partners on a wealth creation framework known as *WealthWorks* that seeks to build multiple types of capitals or assets in a community or region. This approach, recognized as a best practice in EDA's CEDS Content Guidelines, emphasizes support for local ownership and control of businesses and assets in order to root wealth in a region. It is also intentionally inclusive, seeking ways to incorporate a variety of voices as planners and owners, not only as intended beneficiaries or consumers. A handful of EDDs are using wealth creation in CEDS and other EDD regional planning efforts, demonstrating that this approach can influence EDD operations, including improving consideration of equity and access when designing stakeholder participation or even procurement and hiring. Through the Economic Development District Community of Practice (EDD CoP), made possible through an award from the Economic Development Administration, the NADO Research Foundation is coordinating with EDD practitioners and other rural and regional development practitioners to incorporate this wealth creation model where appropriate.

Wealth creation is an approach to economic development that connects a region's assets to market demand in ways that build rooted wealth for local people, places and firms. It brings together a range of public, private and non-profit sector partners who have self-interest in the outcomes and an openness to discovering shared or common interests.

Registration is open!



SCAN ME

2026 EDD Wealth Creation SUMMIT



Bend, Oregon
April 14-16, 2026

October 26-29 Reno, Nevada



For More Information

Melissa Levy

NADO

mlevy@nado.org

www.nado.org



EDD CoP

Economic Development District
Community of Practice

