

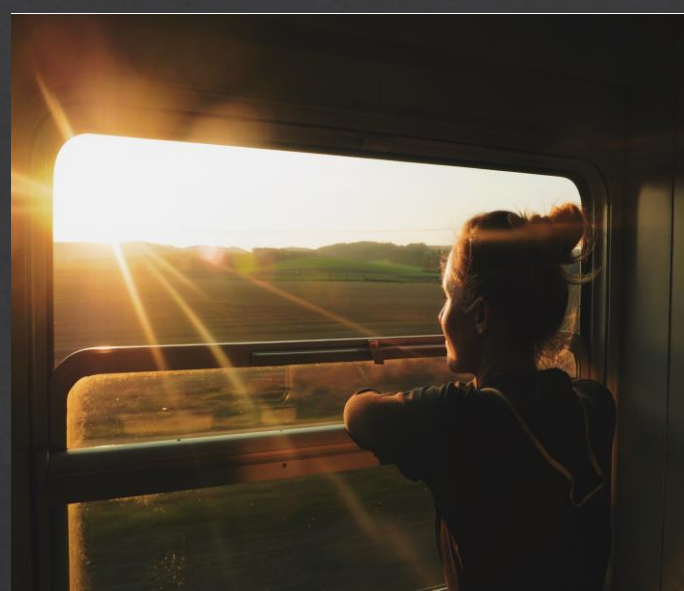
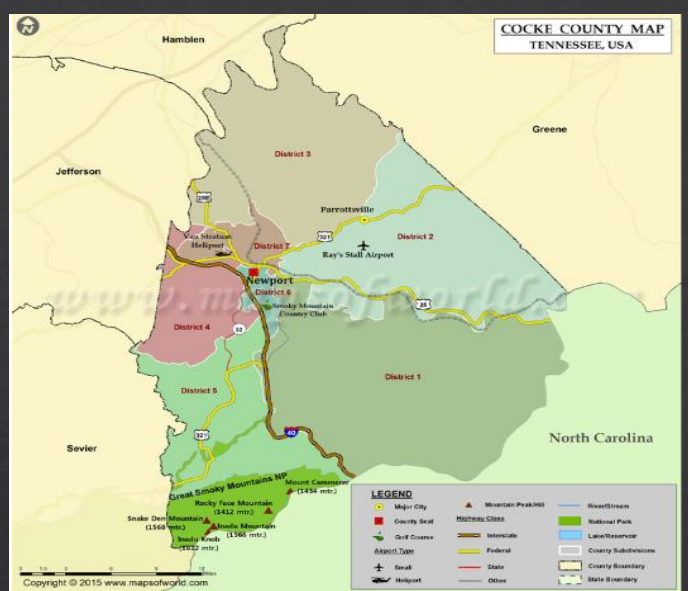


# COCKE COUNTY, TN TRANSPORTATION PLAN

## COUNTY TRANSPORTATION PLANS:

Project Capture and Due Diligences for a Stakeholder Representative Plan





← Looking Back  
Towards the  
Way Forward →



- ❑ Beyond being a ~~mantlepiece display~~, a ~~coffee table book~~, our transportation plan seeks to function as an analytical tool for...
  - Strategizing!
  - Decision-making!
  - Action! (project docs & grants procurement, etc.)
- ❑ Take measure of a county's particularities and peculiarities, potential and promise, e.g., Cocke County's post-storm reconstruction & an alt way into the Smokies and regional tourism attractions
- ❑ Transportation as a catalyst for economic development



# Looking Back Towards the Way Forward... Continued

## Consultations with Cocke Co. → a Foreword for the Plan:



### POST-STORM DIAGNOSTICS

- Mayor & ETDD Executives + Transp. Team, Road Super.

### INCEPTION MEETING

- Mayor, Roads Dept., + ETDD Transp. Team



### IN-FIELD ROADS RECONNAISSANCE

- Road Superintendent + ETDD Transp. Team

### TOURISM & TRANSP., ETC. CONSULTATIONS

- Mayor, TDOT, Planning Comm., Tourism Commissioner, Rafting





# A Delineation of Cocke County's Methods & Deliverables

1. **GANTT CHART:** A listing of 50 Steps
2. **DETAILING:** (A) Deliverables → (B) Descriptions → (C) Methods → (D) Sources and/or Responsibilities → (E) Scheduling, of 9 months, in color-coded Quarter segments.
3. **DETAILING PATHWAY:** → Publication-ready Content
  - A. **Functional Class Definitions & IDs (#6)**
    - ▣ (B) Narrative & Pics, (C) TDOT Web., (D) TDOT/ETDD
  - B. **Local Roads Minor Collector Descriptions (#27)**
    - ▣ (B) Table, (C) E-TRIMS, (D) TDOT
  - C. **Prioritization & Funding Strategies (#20, #23 & #24)**
    - ▣ (B) Narrative/Diagnostics/Grants, (C) E-TRIMS, (D) Focus Group
  - D. **Public Input/Surveying: (#50)**
    - ▣ (B) Post project Capture Instrument Design, (C) MetroQuest & Open House[s], (D) ETDD & TDOT



# GANTT Chart

[illegible]

# Processes & Procedures



## DUE DILIGENCE

- A. TDOT Datasets Requests
- B. Continuing Consultations of Cocke Co.
- C. Desk Reviews
- D. ETDD’s GIS
- E. Report content & formatting strategizing (#D below)

## PROJECT CAPTURE

- A. Focus Groups - #B above + Stakeholder Consultations
- B. Plenary Research of I-40 exits, Exit 440 via SR73/U.S. 321 corridor to Gatlinburg, plus land use
- C. Develop narrative for sections, e.g., tables, profiles, maps.

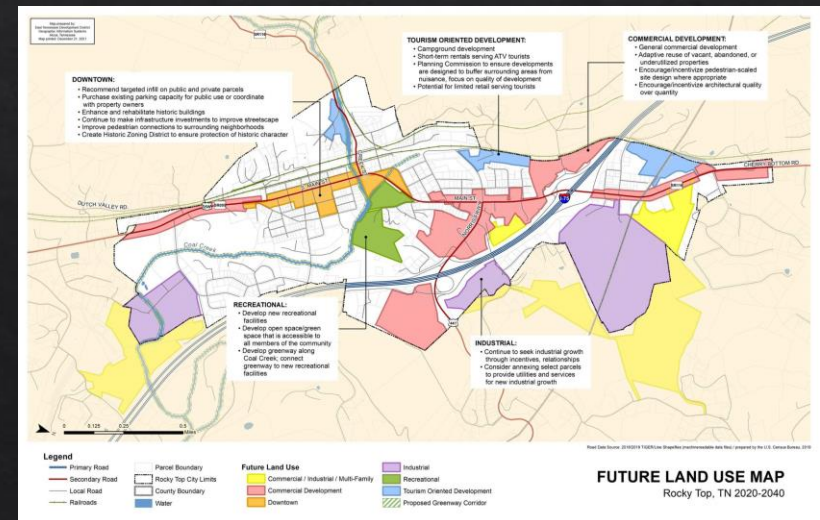
## CONTINUING DEVELOPMENT & FINALIZATION OF EXECUTION

- A. Contents’ prose writing
- B. Copyediting
- C. Formatting (of infographics, dashboards, thumbnails/GIFFs)
- D. Inter- and intra-local governmental administrative, legislative and budgeting enacting regimes and regimen (TDOT and between Cocke & Sevier Counties)

COCKE COUNTY



SEVIER COUNTY  
TENNESSEE



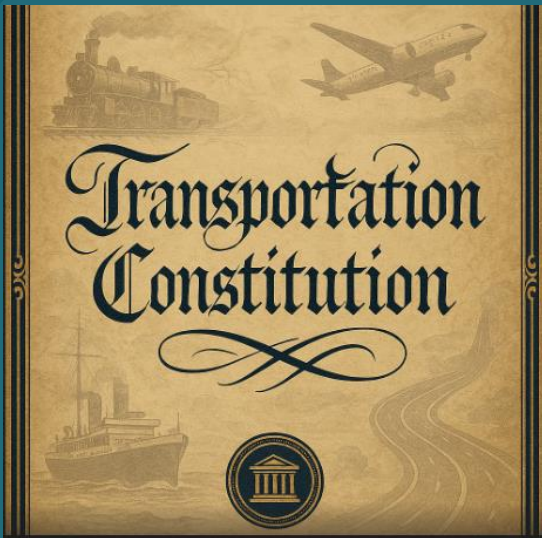




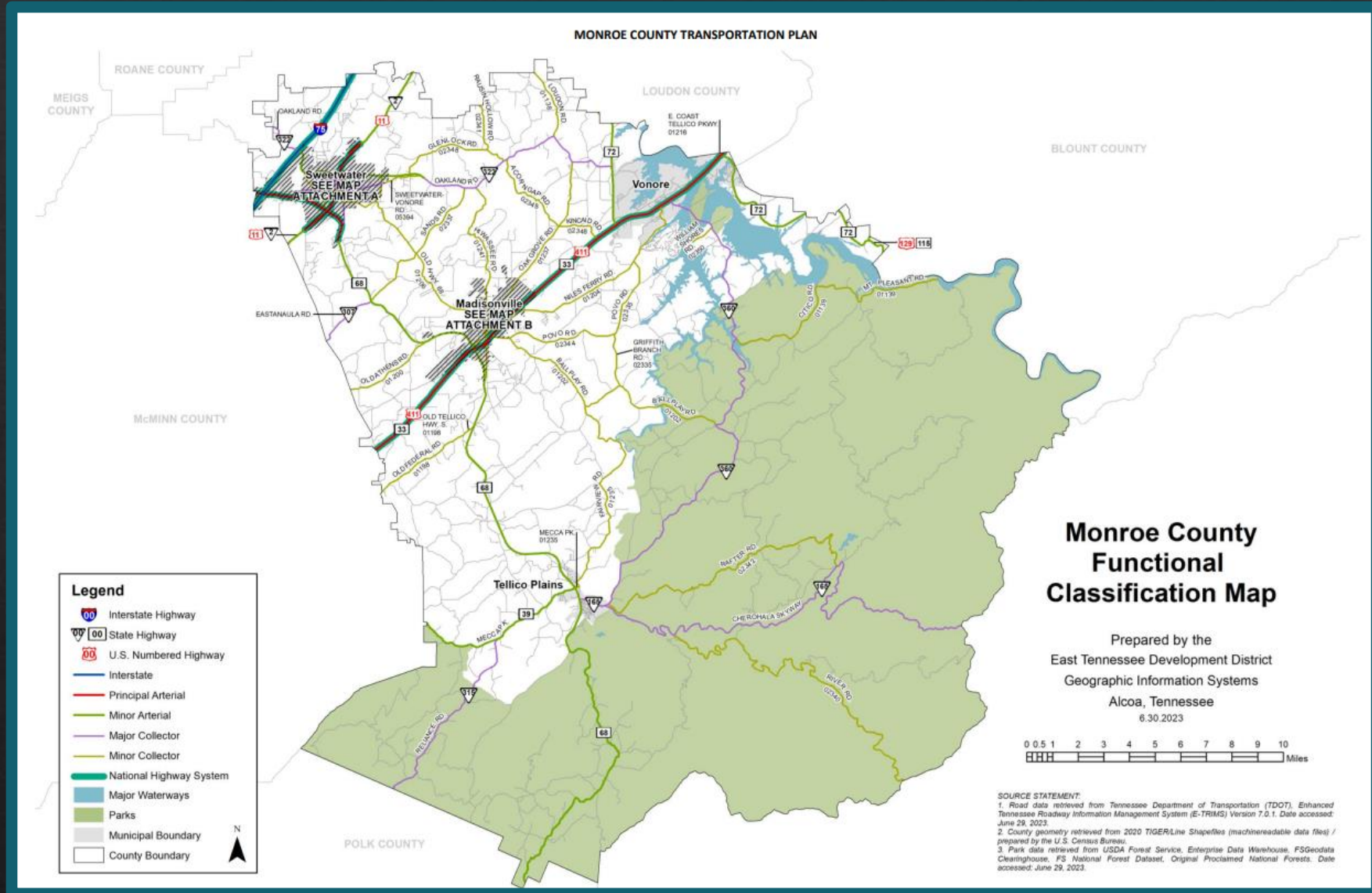
# FOREWORD

A declaratory, succinctly informative and visionary statement **PROJECTS DOCUMENT**, composed of the datasets, consultations, analysis, public input and strategies, which will guide the decision-making and realization of plan's intended effectiveness, akin to a **transportation 'constitution' for Cocke County**.

- ✓ Provide Focus with collective thinking and decision-making
- ✓ Derive vision statements which will be germane for project conceptualization and grants procurement
- ✓ Provide a robust guiding principle for executive action, community trust, stakeholder confidence, and partnership potentialities.



# Functional Classification Map





# Priorities/Potential

1. **Emergency management** and **post-storm** repair and resiliency due to **HURRICANE HELENE** – transport infrastructure, etc.
2. Alternative **transportation corridor** into Gatlinburg → piggyback on East Tennessee's **tourism** promise and fortunes.
3. Transportation biosphere as a pathway to **economic development**, thus outliving its designation as a TN Distressed County





# Exits in Existence

- Exit 432 – Lodging, Industry & Pigeon Forge/Dolly Parton
- Exit 435 – Local Retail Hub & First Approach from NC
- Exit 440 – Gatlinburg (321 Corridor to Reroute Non-locals)
- Exit 443 – Scenic Byways + National Parks & Cades Cove
- Exit 447 – Nature Recreation (Rafting, Biking, Trails, Etc.)
- Exit 451 – NC/Duke Power + Pigeon River Recreation
- # Access to the **MOST VISITED NATIONAL PARK** and **MOST RAFTED RIVER IN USA!**





# Exit 432 Satellite









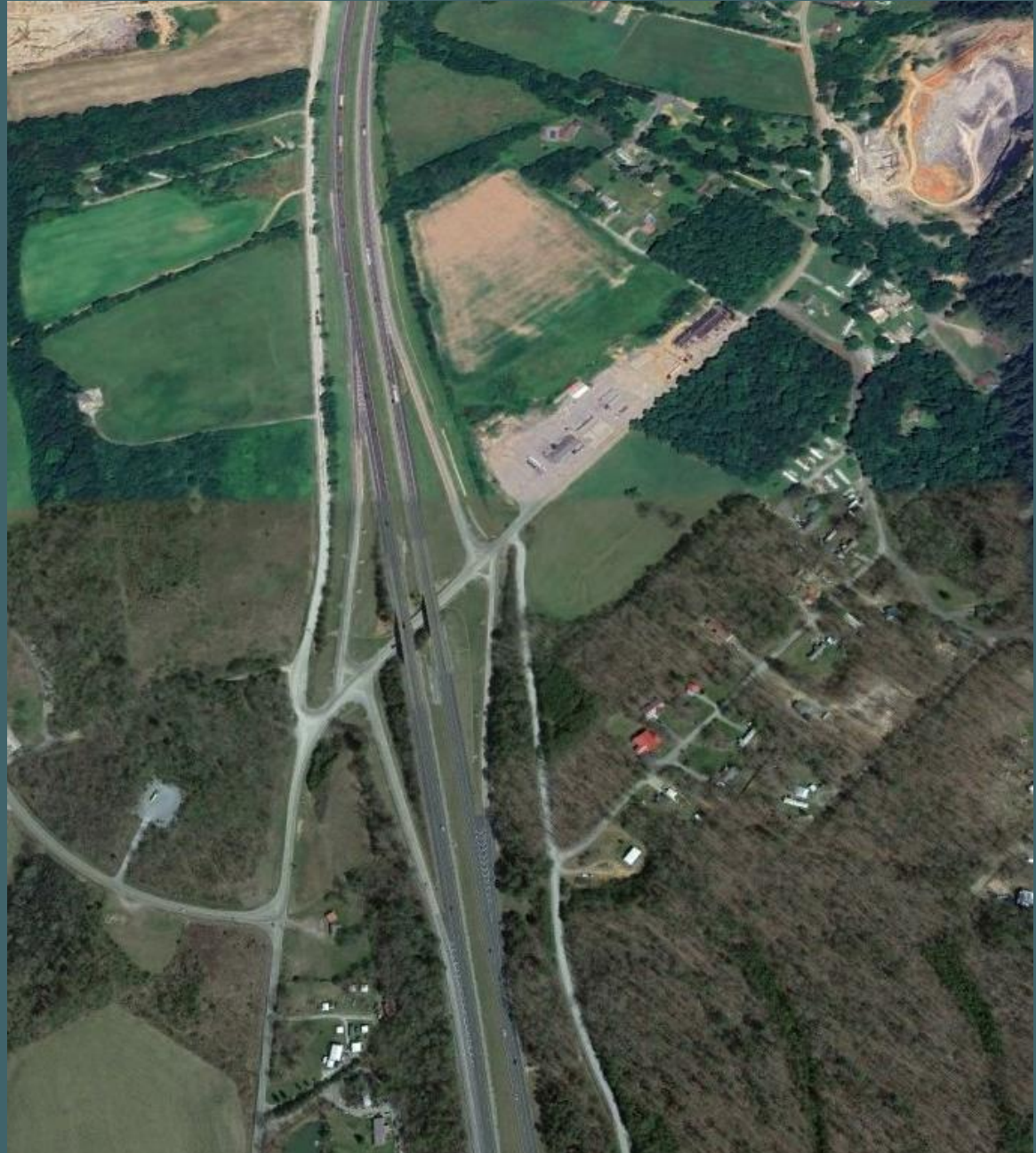
# Exit 440 Satellite

Realignment

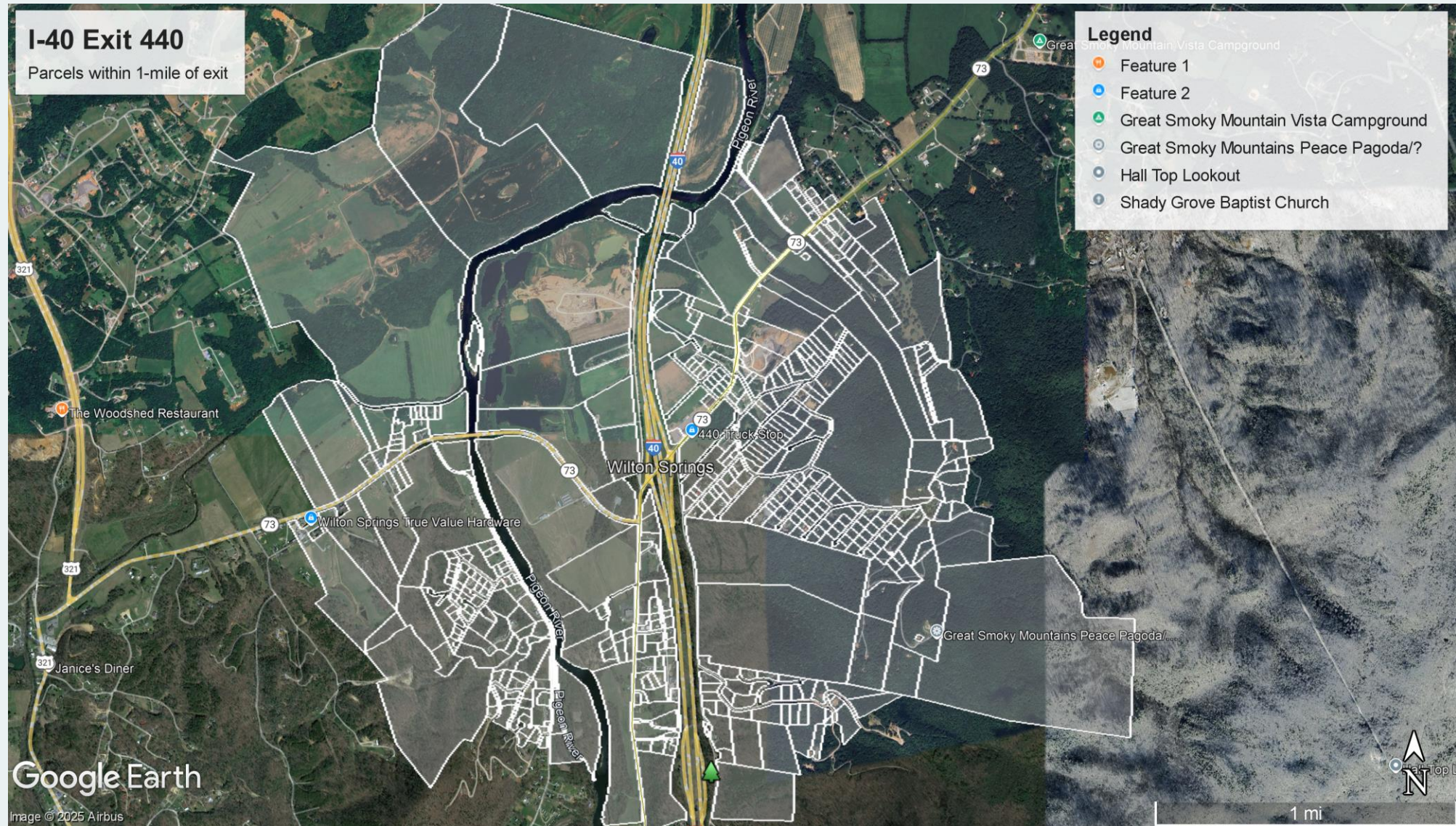
Tourism Traffic Reroute

→ Gatlinburg + Parks

Utilities Master Plan









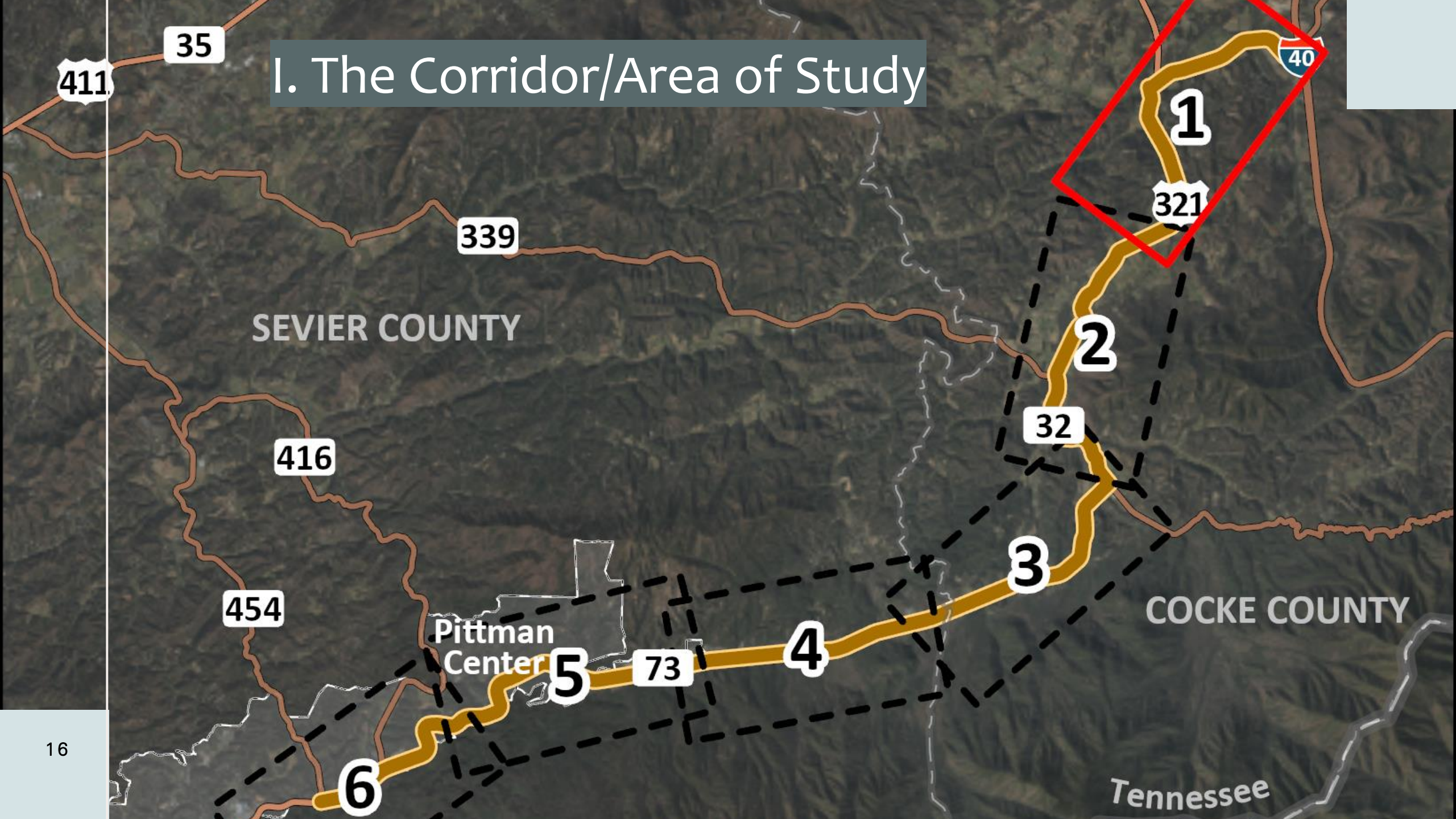
Parcel ID	Owner	Property Address	Vacant or Occupied	Property Use	Lot Size (acres)
26L A 019.00	CITY OF GATLINBURG	PARKWAY 520	Occupied	Commercial (educ/religious & parking garage)	1.9
26L C 001.00	MTN VIEW REAL EST INC	E PARKWAY 130	Occupied	Commercial & Residential (parking, Gatlinburg Amusement Park)	8.4
26L C 002.00	321 PROPERTIES LLC	E PARKWAY 200	Occupied	Commercial (Motel - Park View Inn)	1.7
26L C 003.00	GATLINBURG CHATEAU HOMEOWNERS	BASKINS CK BYPASS 102	Occupied	Commerical & Residential (Condominiums)	?
26M A 033.00	ARROWMONT SCHOOL OF ARTS & CRAFTS	CHEROKEE ORCHARD RD	Occupied	Ed/Sci/Charitable	13.15
26L C 006.00	THORNBOROUGH COTTAGE LLC; % JEAN T KLOCKEN	BASKINS CK BYPASS 108	Occupied	Residential	?
26L C 005.00	THORNBURGH BRENDA SAYLC	BASKINS CK BYPASS 116	Occupied	Residential	?

## II. Identification & Analysis of all Roadway-Neighboring Parcels

- Explanation
- Link to Emily's GIS generated Excel sheet

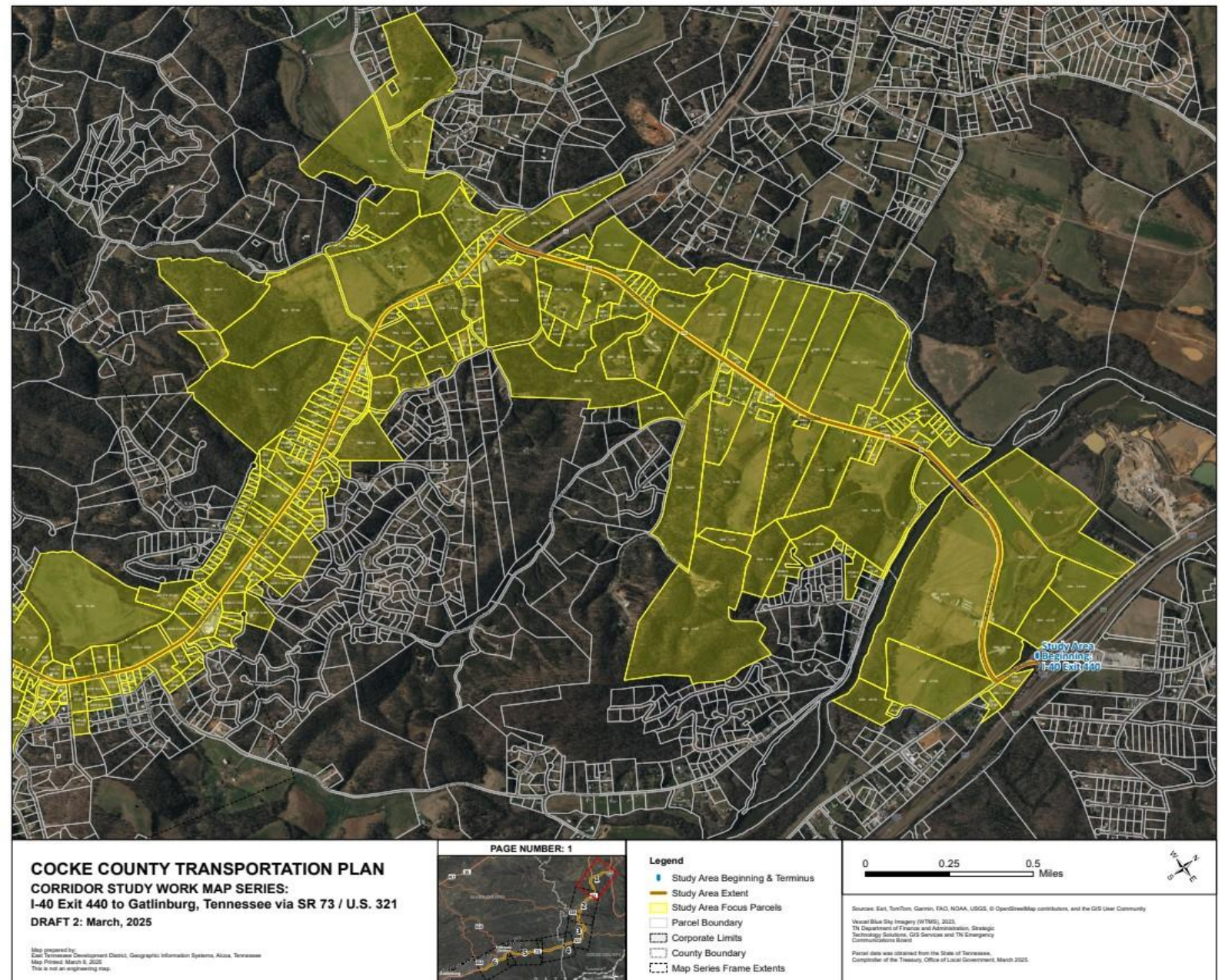


# I. The Corridor/Area of Study



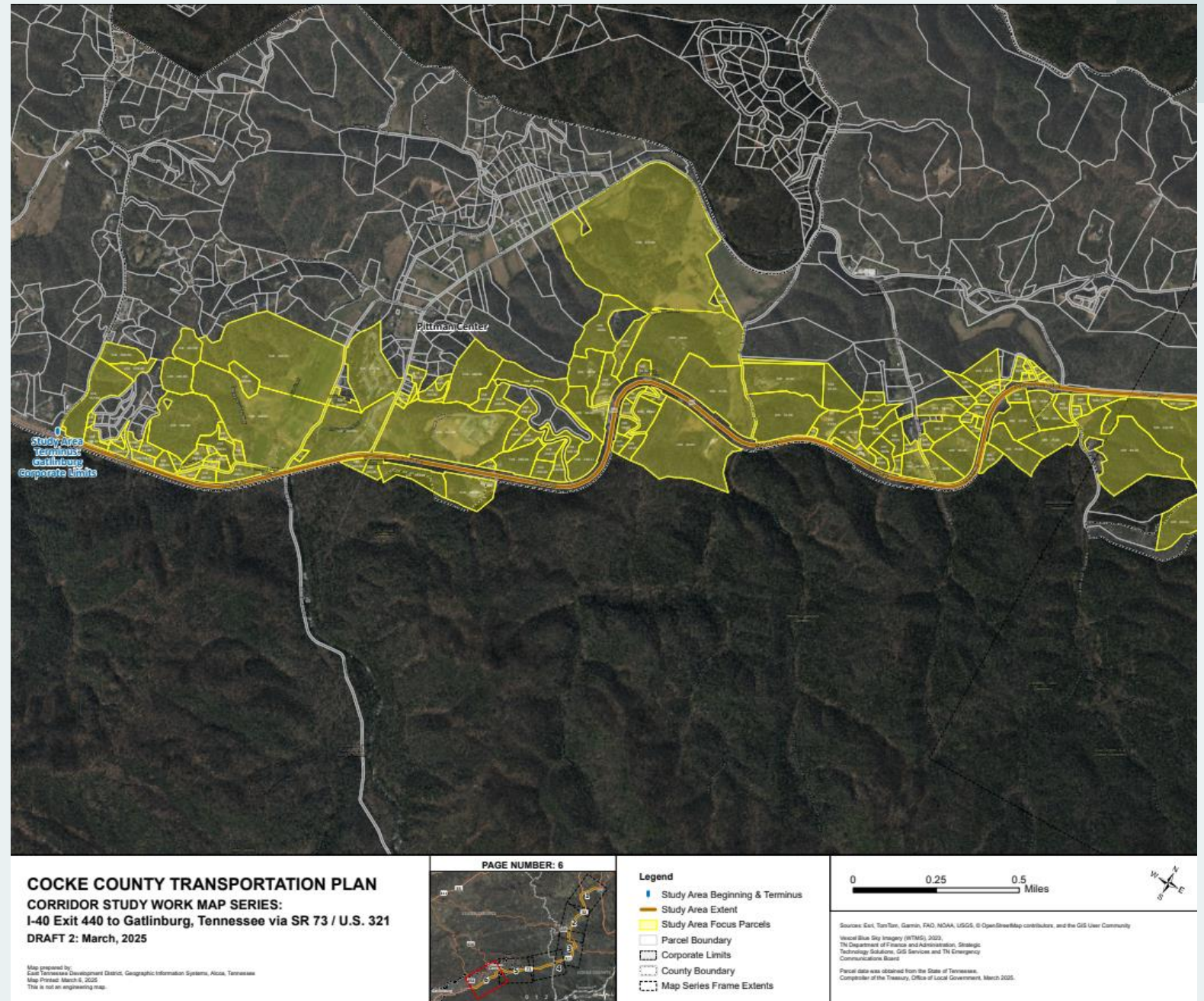


# Section 1 Parcels



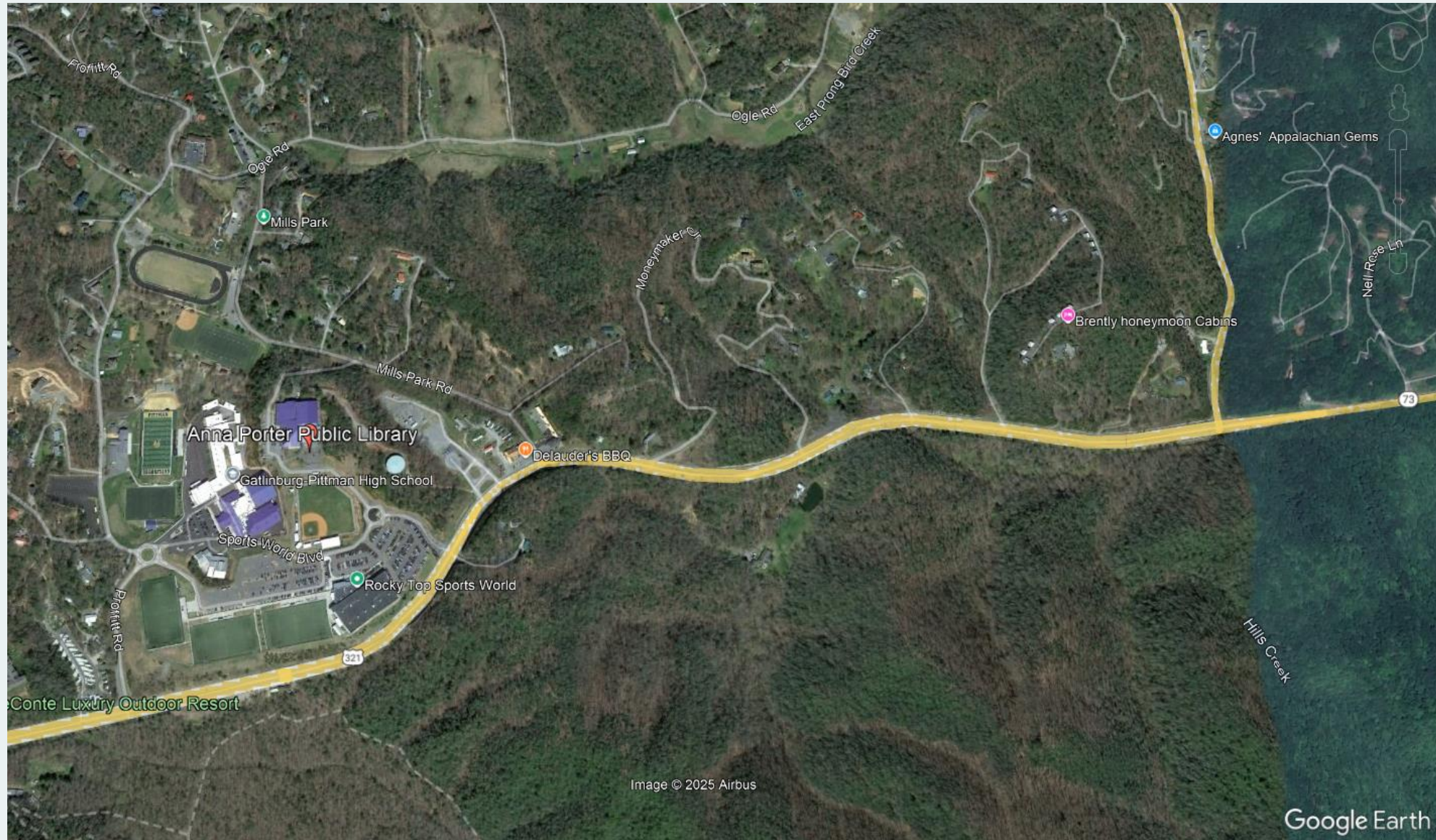


# Section 6 Parcels





# End of Corridor Meeting Gatlinburg





# PARTNERSHIPS:

## LOCAL GOVERNMENTS

- Primarily, Gatlinburg seeks an alternate route for its visitors, whereby they'd not have to navigate Sevierville and Pigeon Forge, plus the National Park Spur, before getting to its attractions.
- This alternate corridor from I-40 through Cocke County directly to Gatlinburg will lessen the competition for water as well, given a utilities equipped transportation and land use tripartite infrastructure trifecta: Roadway → Utilities → Land Use = growth corridor for both counties.
- Sevier County will have a means to alleviate/disperse traffic congestion and emergency rerouting.

## INTRA-LOCAL

- Road Superintendent. Cocke County Partnership. Cocke County Industrial Board. Cities of Newport & Parrottsville. Emergency Management Agency.

## UTILITIES

- Newport Utilities. Jefferson Cocke County Utility District/JCCUD.

## STATE AGENCIES

- TDOT/Tennessee Dept. of Transportation. TDTD/Tennessee Dept. of Tourism.

## STAKEHOLDERS

- Rafting Outfitters/tourism. Duke Power. County Dept. of Education. Tennessee Valley Corridor.





# PARTNERSHIP: TDOT

## ○ ENGINEERING

- Post-storm Helene road repair/rehabilitation.
- Sub-contracting Consultants are addressing Exit 440 Utilities Master Plan, Exit 440 Realignment. Riverbank Stabilizations. Roadway Repair. (e.g., Conway Bridge)

## ○ Planning Division's Forecasting & Planning/Road Data Offices

- Modelling – Origin & Destination Analysis. Jurisdictional Coverage. Etc.
- Road Classifications. Descriptions and Deficiencies. State Aid System. Bridges. Bike & Pedestrian.

## ○ Project Management

- Exit 44 Realignment/Improvements: Increase Traffic Capacity & Tourism Traffic Rerouting

## ○ Others:

- Parrottsville Bypass
- Highway 411 Expansion = 4 Lanes Exit 432 → Sevier County.
- TNTimes. Streetlight.
- Public Opinion Polling/Public Engagement = Social Pinpoint. MetroQuest. Etc.





# FINANCIAL RESOURCES MOBILIZATION (**GRANTS**, etc.)

## STRATEGY:

Create a customizable, à-la-carte-style **GRANTS AND COST-SHARING** initiative—like a potluck supper club—focused on transportation and infrastructure development. This intergovernmental collaboration would be hosted by Cocke County and designed as a “nutritional feast” of opportunity, where each participating partner (or “guest”) contributes and benefits.

**To honor and uplift the collective fortunes of Cocke County and its regional allies, the initiative will include:**

- ❖ **TAILORED GRANT PROGRAM PURSUITS** (the à-la-carte menu) to meet diverse inter- and intra-local needs.
- ❖ **SHARED INVESTMENT STRATEGIES** (the potluck dishes), i.e., each stakeholder brings something to the table.
- ❖ **TAKE-HOME “BLESSING PLATES”**—care packages of resources, tools, or follow-up support for each partner to continue the work in their own communities, and yet still be synergistic and complementary.
- ❖ **FORTUNE COOKIES FOR EACH DINER**, each containing a bold, hopeful prediction—a symbolic commitment to future success and shared prosperity.

**GRANT PROGRAMS of interest include:** TPG, SPP, PROTECT, MMAG, ATIIP, Interchange Lighting, Local Access Road Program, and/or National Scenic Byways.







# SUMMARY

- A transportation plan who doubles as an **ECONOMIC DEVELOPMENT STRATEGY**.
- A transportation who has dedicated **INTERSTATE EXIT SECTOR PLANS** for the 6 exits which traverse through Cocke County.
- A transportation plan that is fully attentive to **LAND USE** implications and consequences.
- A transportation which has **INTERGOVERNMENTAL** protocols – Gatlinburg and Sevier County.
- A transportation plan that is fully inclusive of its **STAKEHOLDERS' INPUTS** and local priorities.
- A transportation plan coming replete with **FINANCIAL RESOURCES STRATEGIZATION AND MOBILIZATION**.
- A transportation plan aided by the active participation of TDOT'S **DATA, ENGINEERING AND FINANCES**, all with direct relevance to **LOCAL GOVERNMENTS' TRANSPORTATION PLANNING AND ECONOMIC DEVELOPMENT NEEDS**.





# Thank You!



**Ekem Amonoo-Lartson**  
Transportation Planner  
[eamonoo-lartson@etdd.org](mailto:eamonoo-lartson@etdd.org)  
865-273-6003 ext. 121



**Laura Smith**  
Transportation Planner  
[lsmith@etdd.org](mailto:lsmith@etdd.org)  
865-273-6003 ext. 103



**Emily Craig**  
GIS Manager  
[ecraig@etdd.org](mailto:ecraig@etdd.org)  
865-273-6003 ext. 120