



**Design
Manufacture
Recycle**

with **Intent.**



D6 Overview

Fastest design-to-market plastic manufacturer in the industry

Vertically integrated with transparent closed-loop ownership

Innovative think tank for sustainable plastic and aluminum solutions

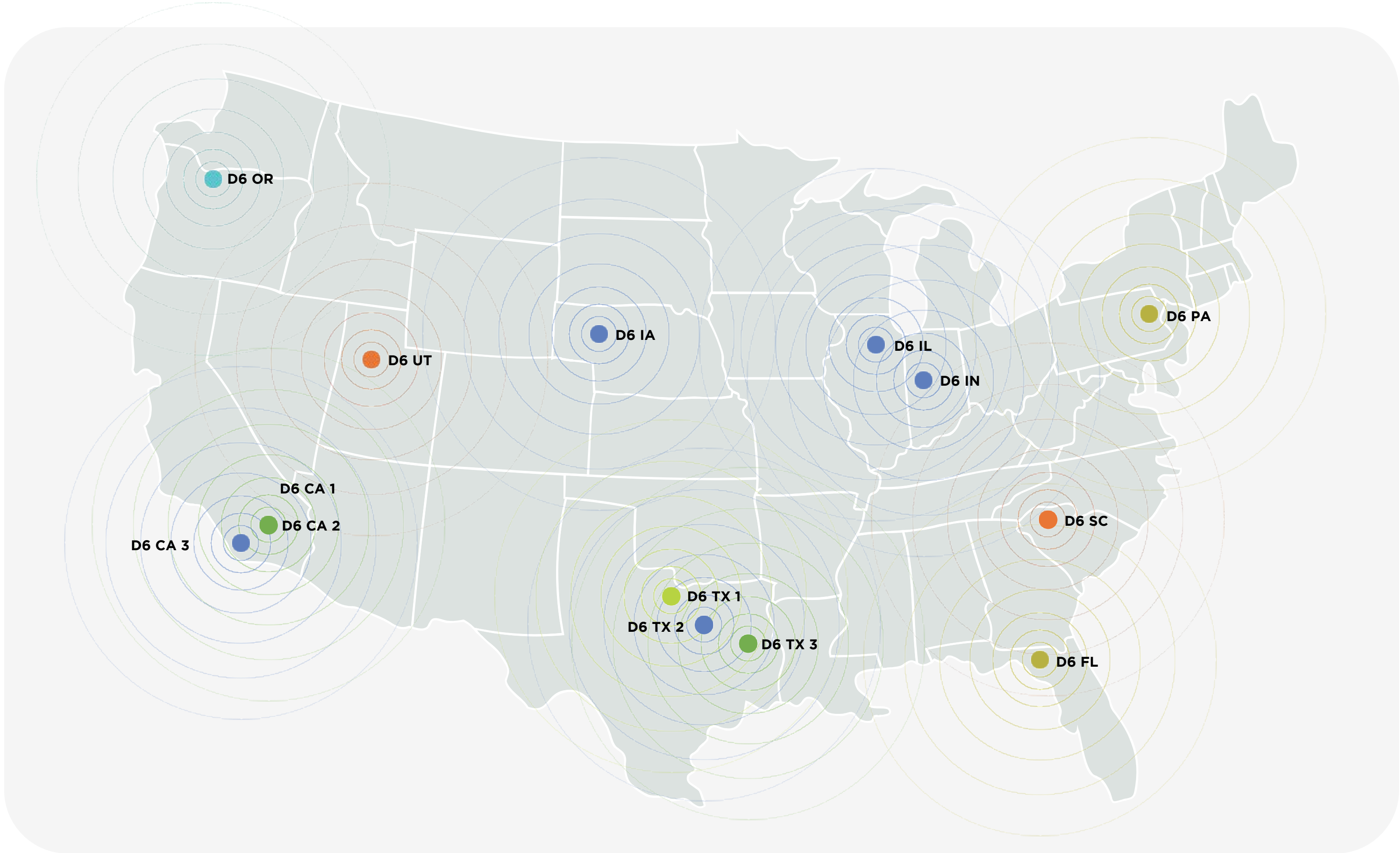
Working towards being carbon-negative by 2035+

Confidential



D6 Current US Network

Confidential



- Recycling**
 - D6 TX 3
 - D6 CA 2
- Recycling + Manufacturing**
 - D6 TX 1
- Recycling + Manufacturing + Distribution**
 - D6 OR
- Manufacturing + Distribution**
 - D6 CA 3
 - D6 TX 2
 - D6 IL
 - D6 IA
 - D6 IN
- Distribution**
 - D6 UT
 - D6 SC
- Pending**
 - D6 PA
 - D6 FL

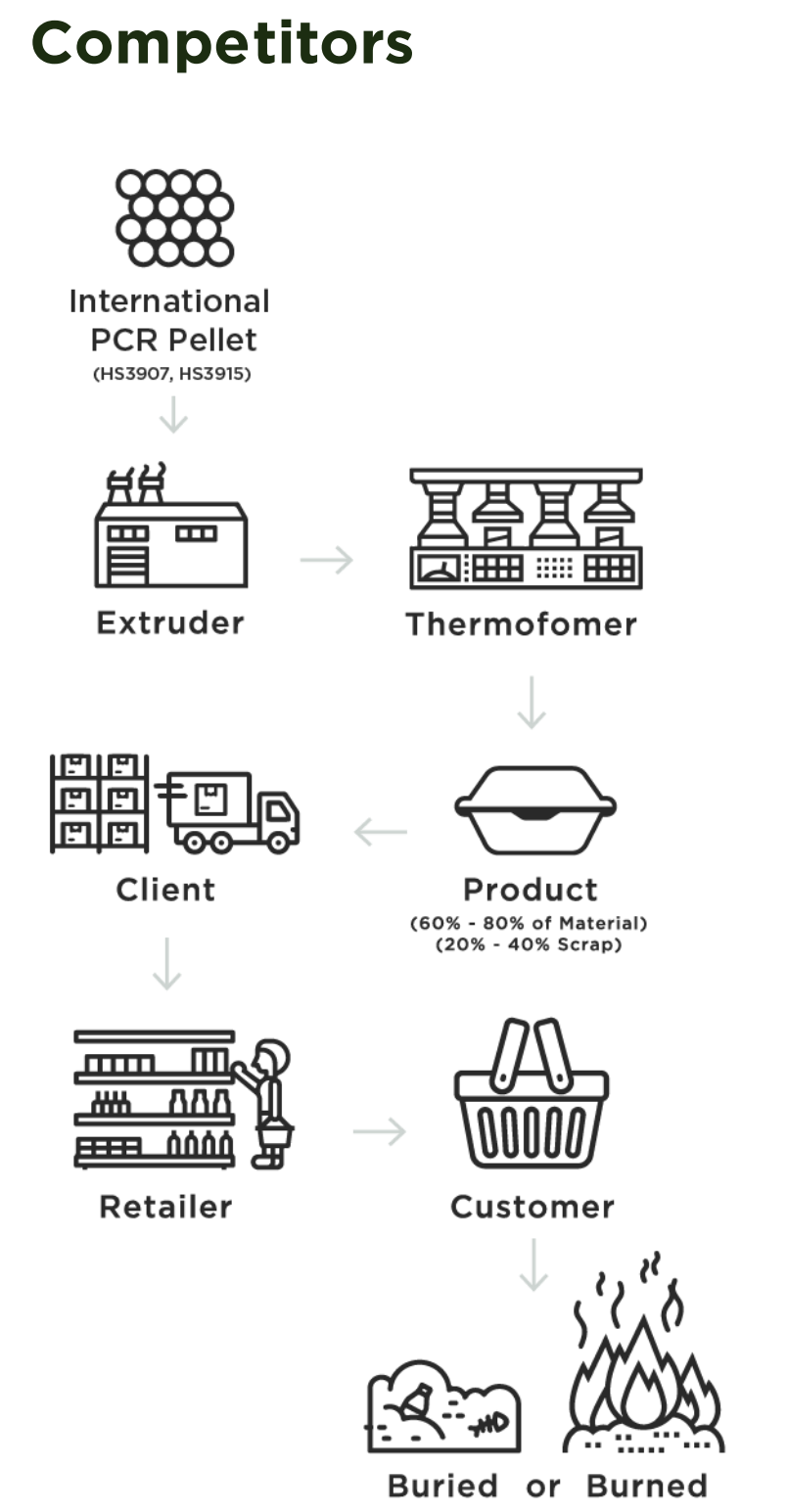
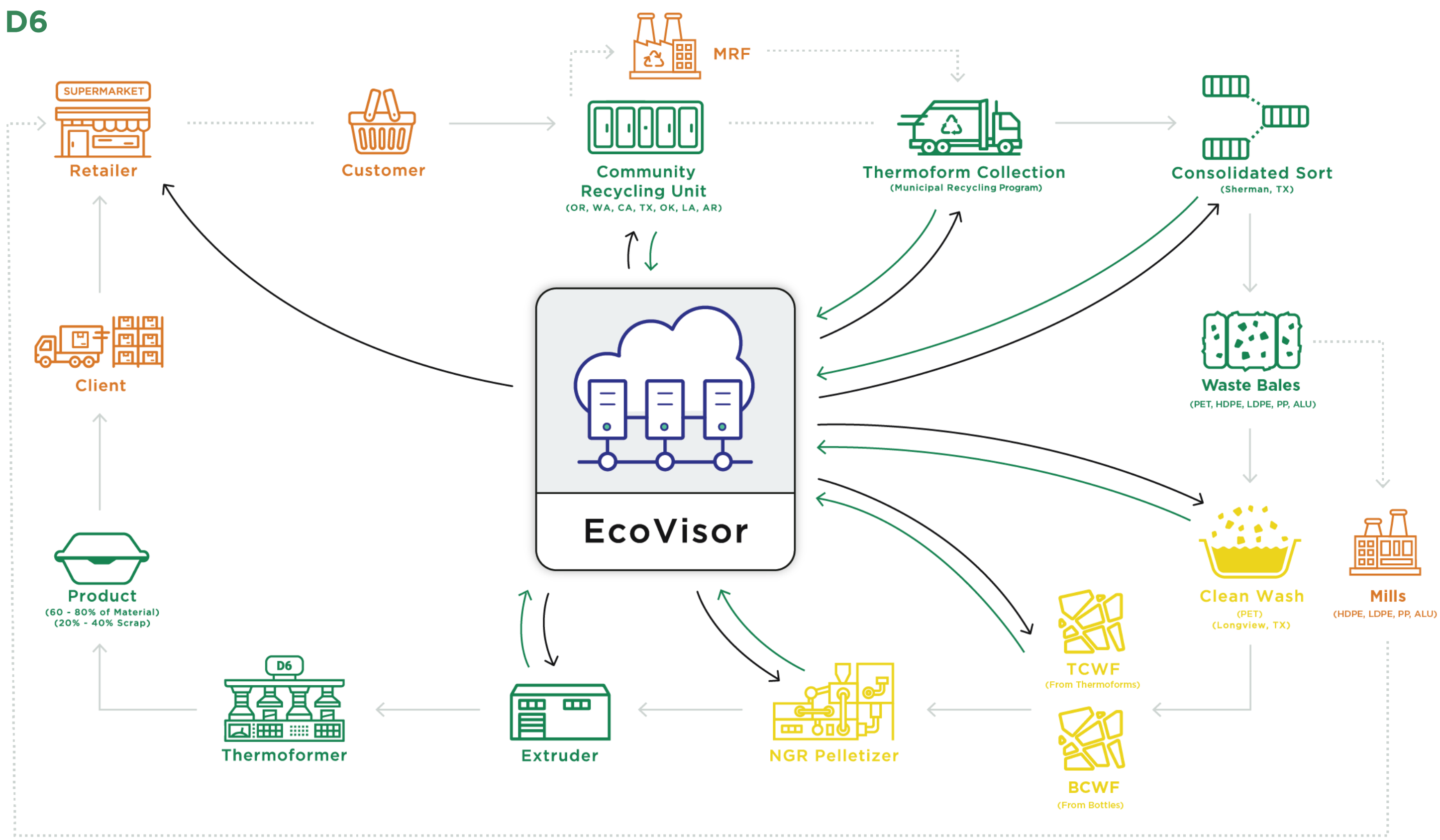
D6 vs Industry

● Competitors

● D6

- Wash Line process
- Controlled and Vertically Integrated

Confidential



Pending State & Federal Legislation

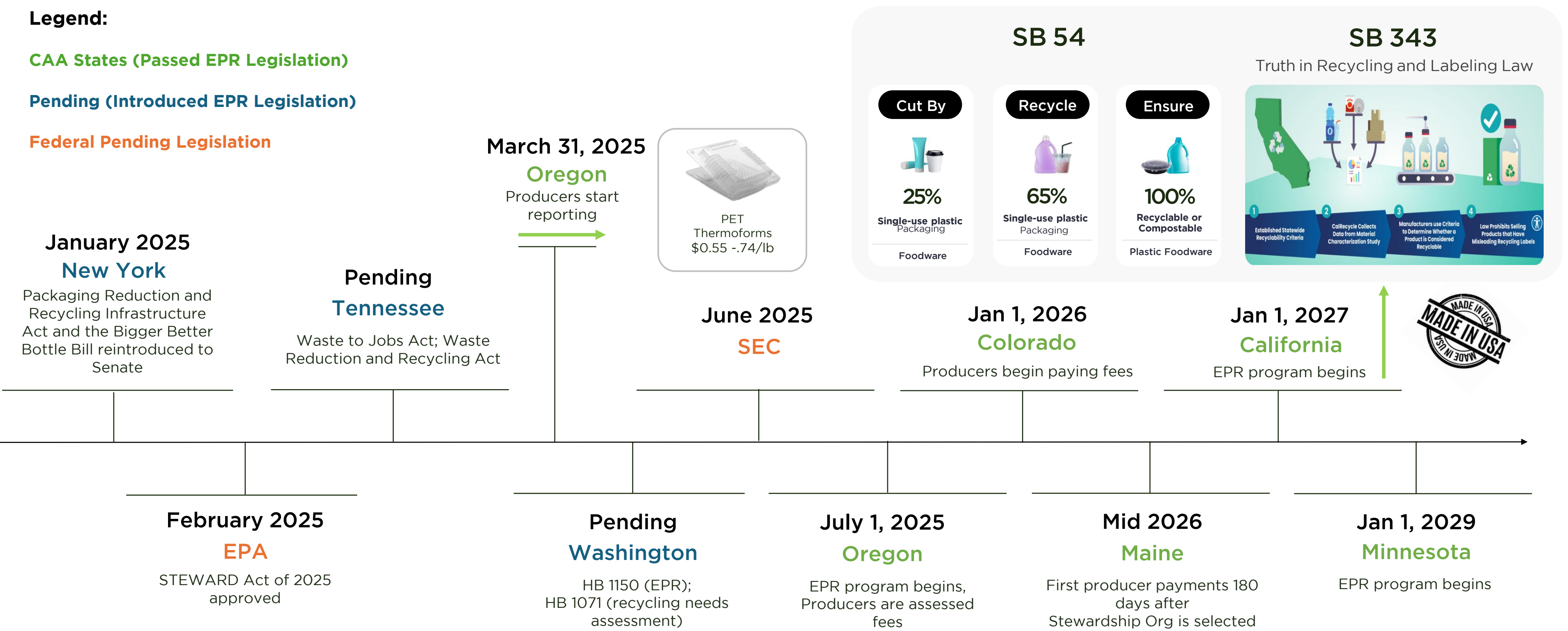
Legend:

CAA States (Passed EPR Legislation)

Pending (Introduced EPR Legislation)

Federal Pending Legislation

Confidential



EPR Fees on Packaging

Confidential

Empty Package Weight (WT.)

Material

Draft Low/High Fees based upon material & package weight

See reference link below



Gary Cohen
Volunteer Outreach Director
Reimagine Packaging Tennessee



Pkg WT.
4.4 oz.

Paper –
Paperboard

★★★★★ (295)

\$5⁹⁹ **\$.01**

 SNAP EBT
General Mills Fruity Cheerios
Large Size Cereal
14.2 oz



Pkg WT.
4.8 oz.

PET – #1
Clear

★★★★★ (17607)

\$5⁹⁹ **\$.05 to \$.07**

 SNAP EBT
Coca-Cola Classic Soda Bottles
6-pack / 16.9 oz



Pkg WT.
4.4 oz.

HDPE – #2
Colored

★★★★★ (41)

\$3²⁹ **\$.06 to \$.07**

 SNAP EBT
Kroger Vitamin D Whole
Milk Gallon



Pkg WT.
15.4 oz.

HDPE – #2
Colored

★★★★★ (295)

\$19⁹⁹ **\$.18 to \$.24**

 SNAP EBT
Tide Original Scent Laundry
Detergent
132 fl oz



Pkg WT.
1.5 oz.

PP – #5
Containers

★★★★★ (17607)

\$4⁹⁹ **\$.03 to \$.04**

 SNAP EBT
Simple Truth Organic Plain
Nonfat Greek Yogurt Tub
32 oz





Pkg WT.
4 oz.

Paper / Fibre
Gable Top

★★★★★ (41)

\$3⁹⁹ **\$.07 to \$.10**

 SNAP EBT
Simple Truth Organic 2%
Reduced Fat Milk Half Gallon
½ gal



Pkg WT.
10 oz.

Plastic-
Rigid PP

\$3⁰⁰ **\$.01 to \$.05**

 SNAP EBT
Fresh Cut Mixed Melon



Pkg WT.
9.8 oz.

Plastic –
Rigid PET

★★★★☆ 3.3 (46)

\$6⁹⁹ **\$.04 to \$.08**

 SNAP EBT
Private Selection Fresh Colossal
Blueberries

Oregon RMA Fees

Aluminum Containers
\$0.04-0.05/lb
(Plus Container deposit \$0.10/can)

Glass
\$0.02-0.06/lb

**Paper/
Fiber Packaging**
\$0.07-0.77/lb

**Plastic –
Rigid PET**
\$0.15-0.35/lb

Steel Containers
\$0.05-.006/lb

REM Qualifications for CAA

REM Requirements

Compliant

(labor, health, and safety requirements)

All necessary permits for REM status are underway for the new Omni Recycling Center, our wash facility in Longview

Transparent

(auditable, chain of custody tracking from intake to output)

We are already doing this with EcoVisor: track material from pickup to production; also allowing customers to use this tech to enhance tray-to-tray recycling

Environmentally-sound

(auditable, safe, water treatment)

Not only are we diverting tons of waste from landfills with our CRU program, our Omni Recycling Center has a self-contained water treatment system: no water gets pulled from municipal systems and runoff is not put back into local systems

Achieves Adequate Yields

(at least 60%, D6 is at 90%)

The baseline 60% recyclability is being blown away by our rates that are consistently above 90%; our most recent CRU collection showed an average 95% yield



Confidential

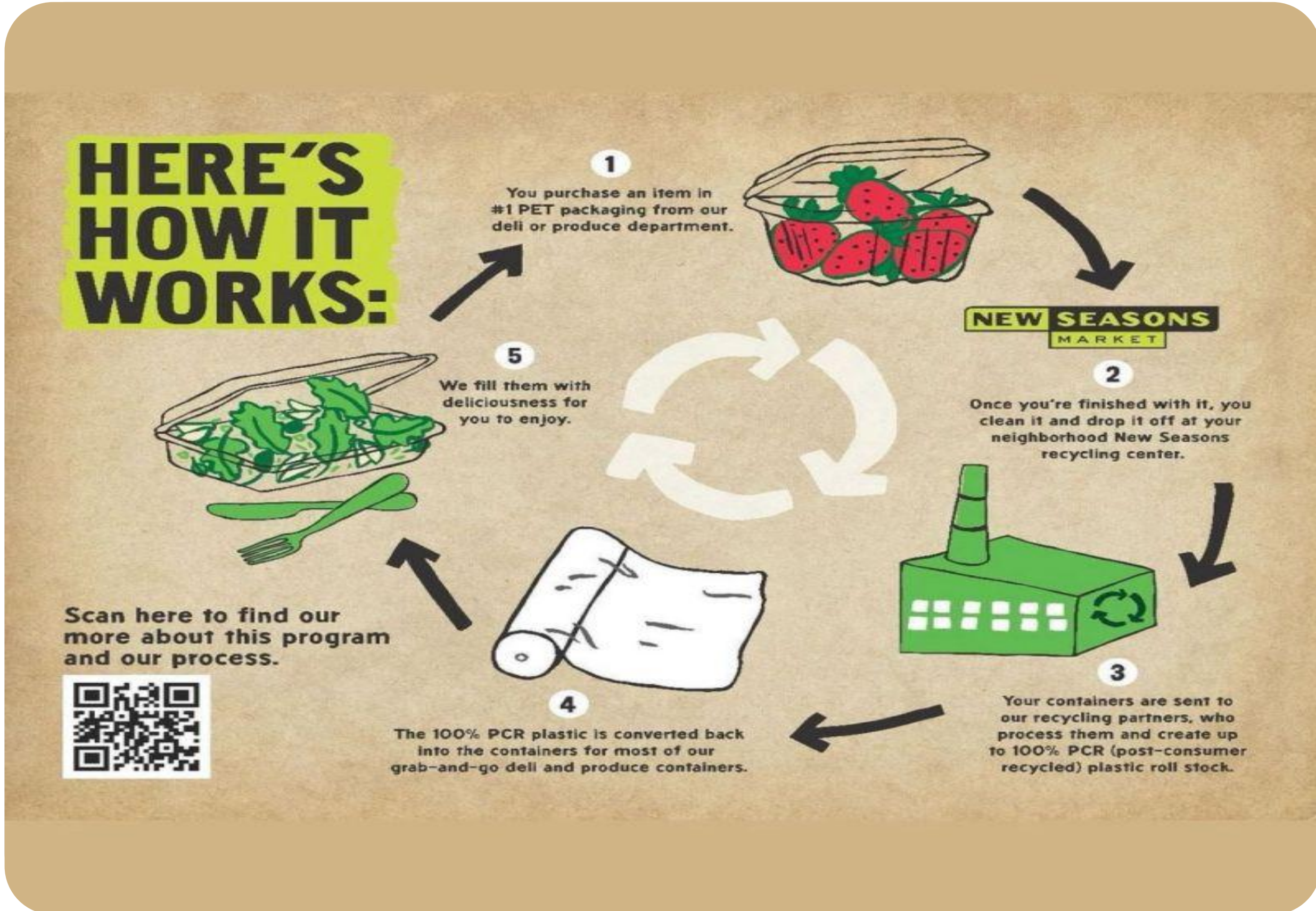
New Seasons Recapturing Program

Confidential

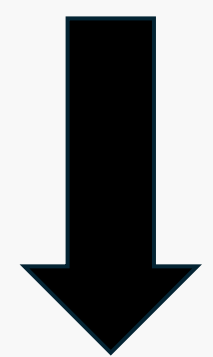


New Seasons In-House Thermoform Recycling Program

Confidential



500,000+ lbs/
240+ tons recycled
since 2022



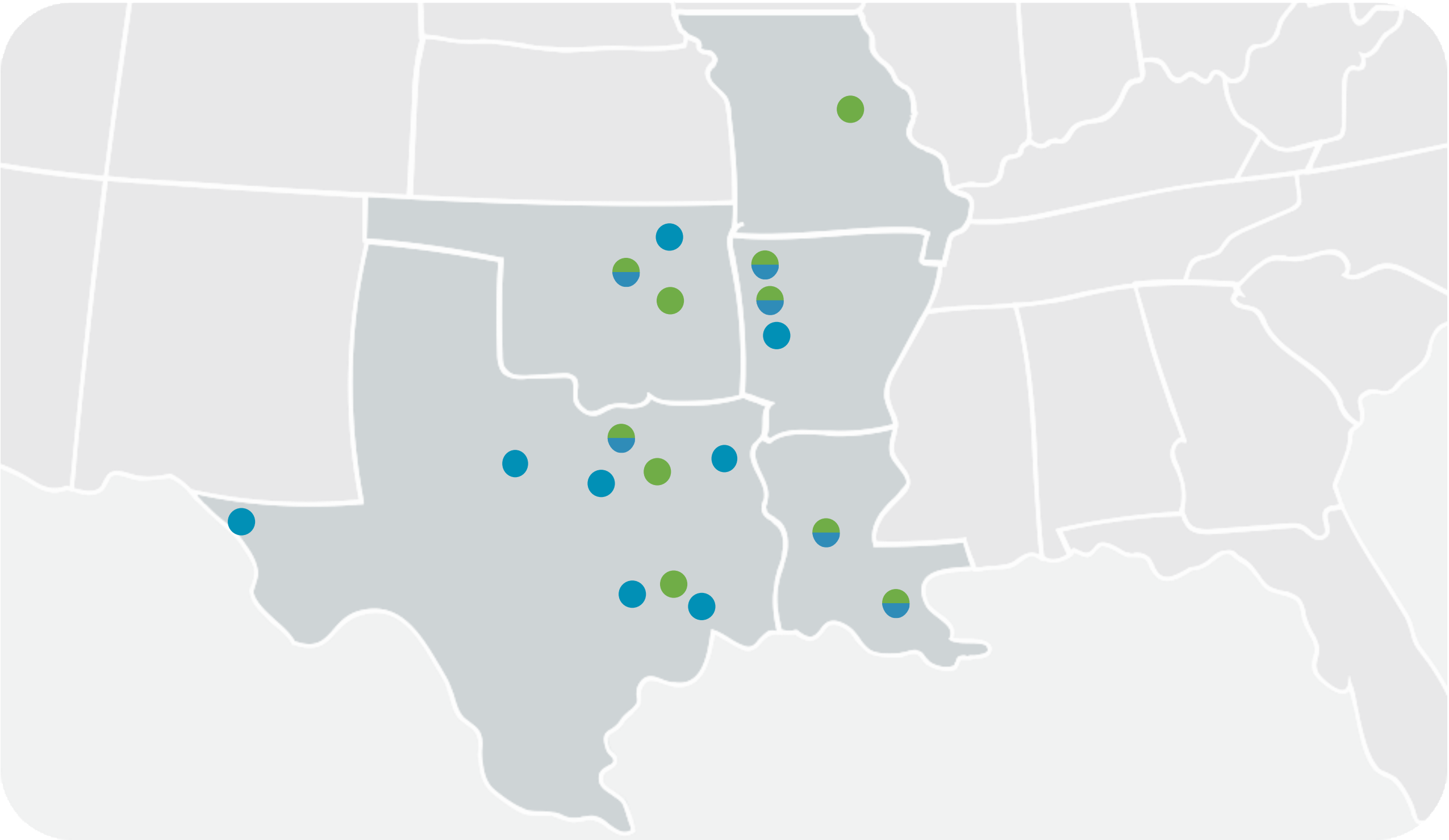
173,500+ lbs/
90+ tons
PCR containers
manufactured
(**100% PCR in 2024**)

 **2024:**
36.1 mt CO2 offset

CRU Recapturing System

Confidential

● Partner 1 ● Partner 1 & 2 ● Partner 2



Locations	Partner 1	Partner 2	Total
Texas	9	14	23
Arkansas	3	4	7
Oklahoma	7	7	14
Louisiana	7	5	12
Missouri	2	0	2
Puerto Rico	3	0	3
Total	31	30	61

Medium (20 ft. container)

Community Recycling Unit (CRU)

Sponsorships to offset costs

Highlight community and local businesses

Customization available

8 Doors, 6 Material Streams



20' X 8.5' X 8' (4 Parking Spaces)

Confidential



Community Recycling Program

Confidential

Cost Comparison

Community Recycling Unit

Accessible to entire City

Lowest cost option:
\$0.19/resident
(16,969** residents in HC)

Potentially zero cost to taxpayers

First Rural Market Recycling Program in Texas

Cost Comparison

based on population and household data for municipal recycling services

Dallas : \$16/resident/mo

Little Rock : \$12/resident/mo

Oklahoma City: \$11/resident/mo

New Orleans: \$10/resident/mo

Albuquerque: \$8/resident/mo

Additional Benefits

Paid advertisement for businesses to participate

Access for all community types (rural, suburban, urban areas)

Community-driven

Auditable data reporting (EcoVisor)

CRU costs per consumer: \$2.28 vs. \$219.96 annually in TX

98.9% cheaper to operate CRU vs. curbside recycling program

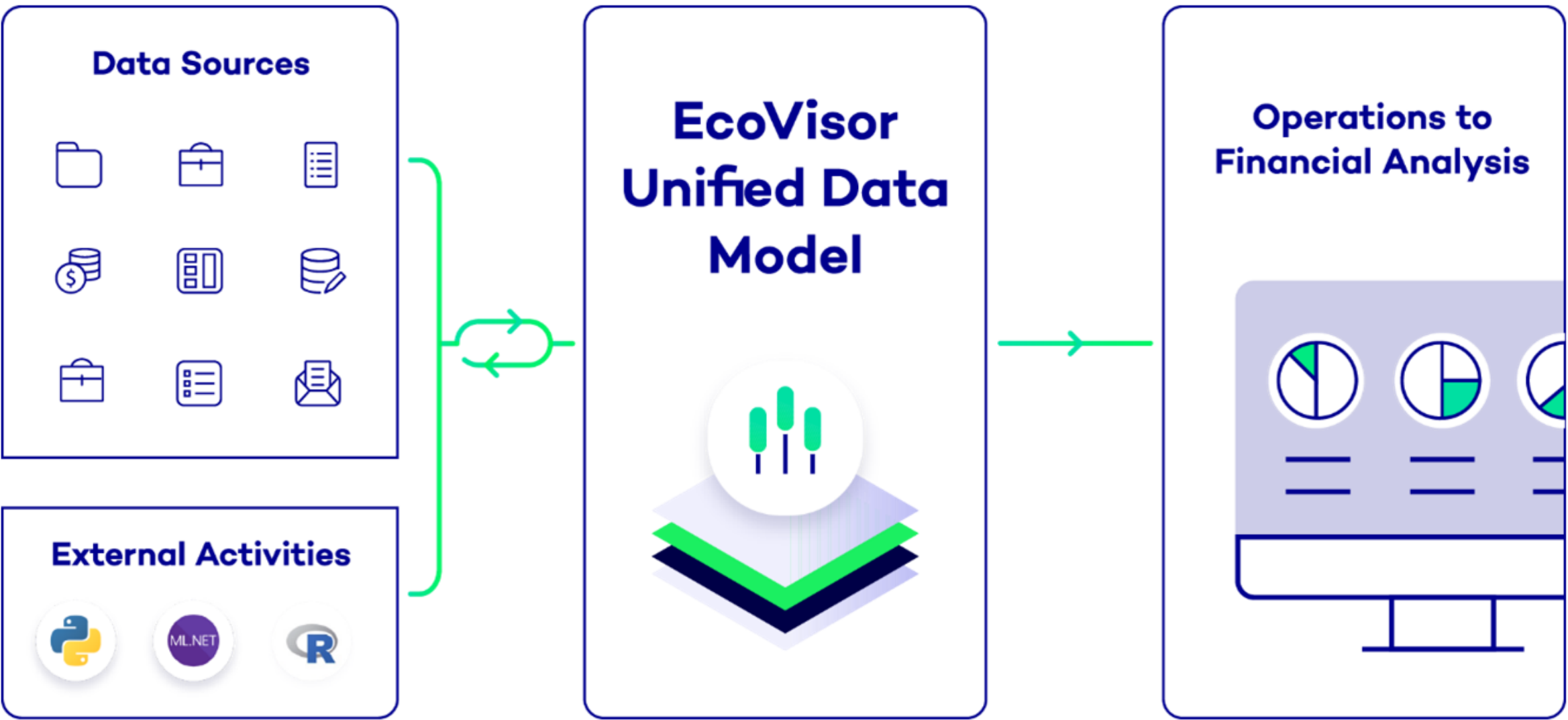
Collected, Recycled, and Remanufactured in Texas

Extends life of landfills

EcoVisor is a software-as-a-service (SaaS) platform which amplifies and automates the flow of data and analytics across multiple applications and data sources utilizing a unified data model.

Confidential

- Unified & open architecture (UDM)
- Enhances data utilization / cleansing
- Collaborates with external ecosystem
- Delivers analytics expertise
- Commercially deployable, ready to use
- Microsoft Azure-based
- Bi-directional API



Strategic Benefits of EcoVisor Platform

All of your data in one place. Create a universal view for your entire organization.



Unify Your Data

Easily unify disparate data sources into one all-encompassing workspace.



Analyze For Insight

Refine and analyze your data as a team to enable better, faster decision-making.



Visualize For Understanding

Apply business logic and outcomes defined by your organization to create powerful visualizations.

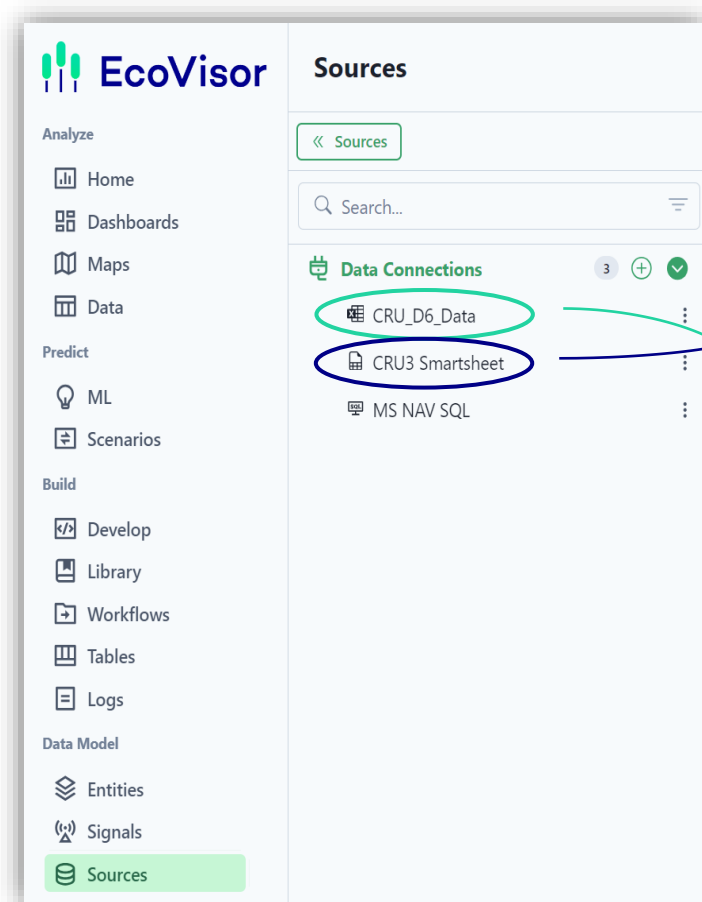


Optimize For Action

Contextualize your data to deliver insight for action.

CRU Data

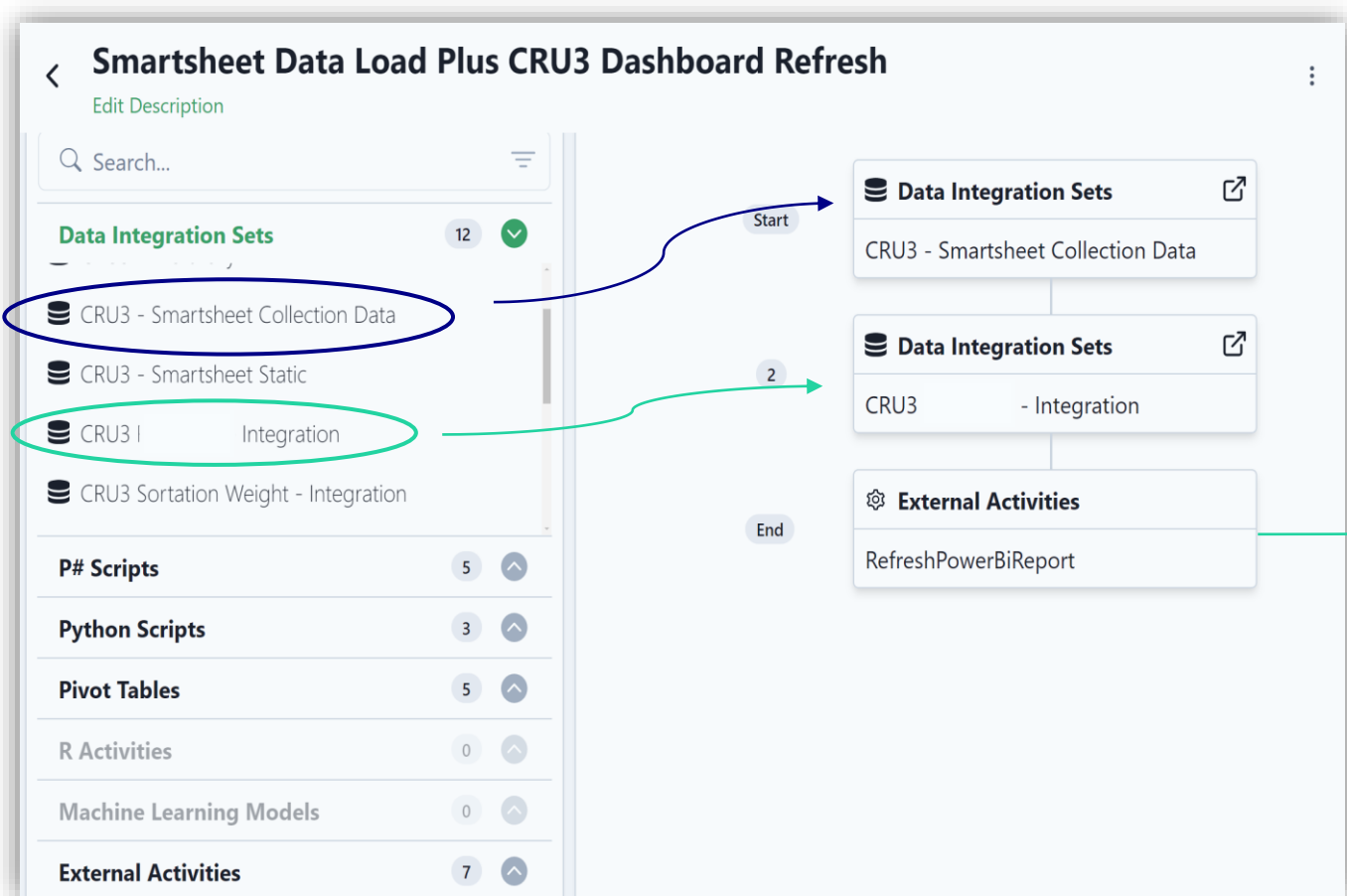
Step 1. Data connection



Connect to different data sources:

- Excel
- Smartsheet
- SQL (Financials)

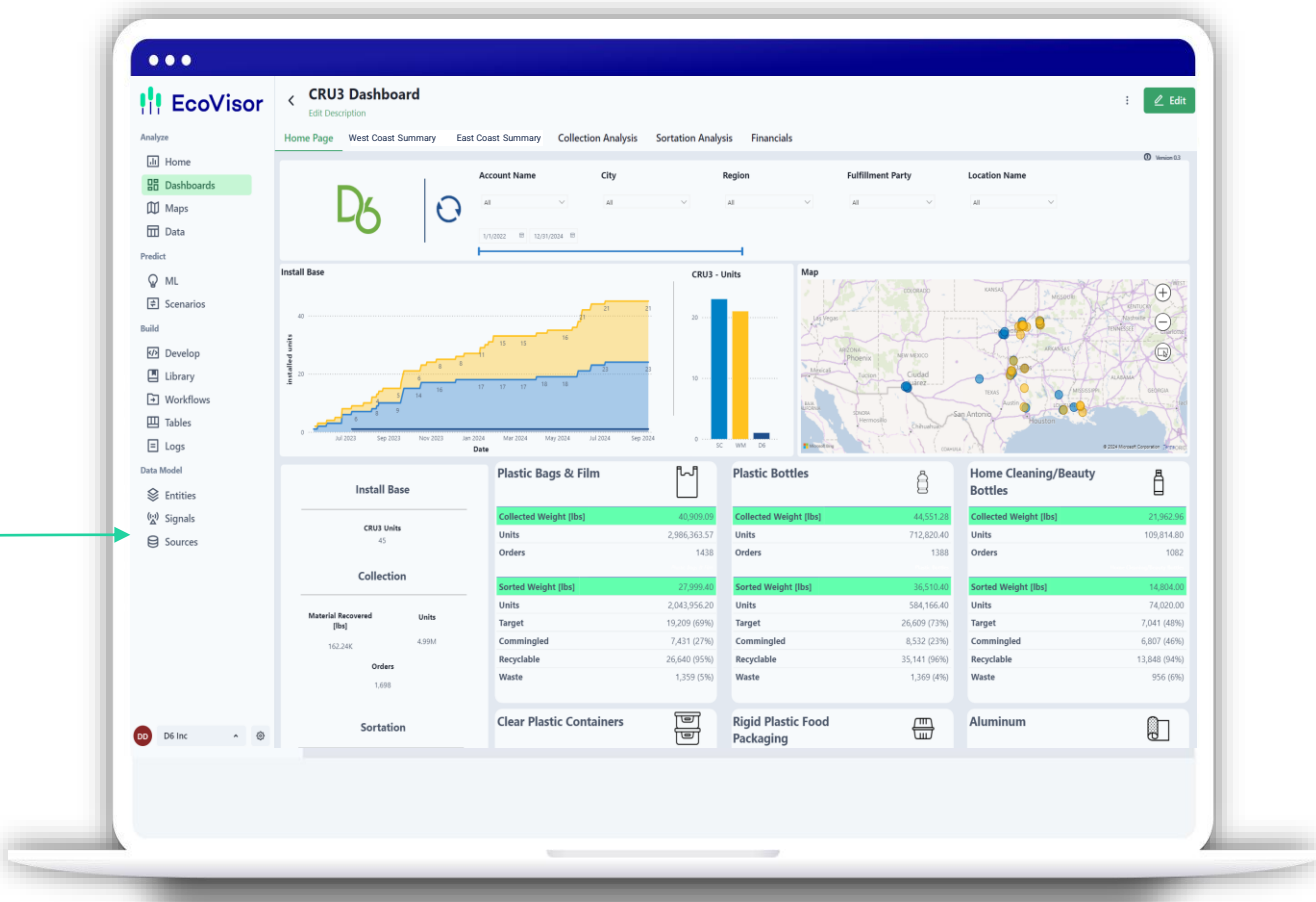
Step 2. Run data integration workflows



Create advanced workflows using no-code to low-code environment with building blocks. Workflows can automate the routine and be executed with various schedules.

Current CRU solution is executed weekly (on Mondays)

Step 3. Visualise results



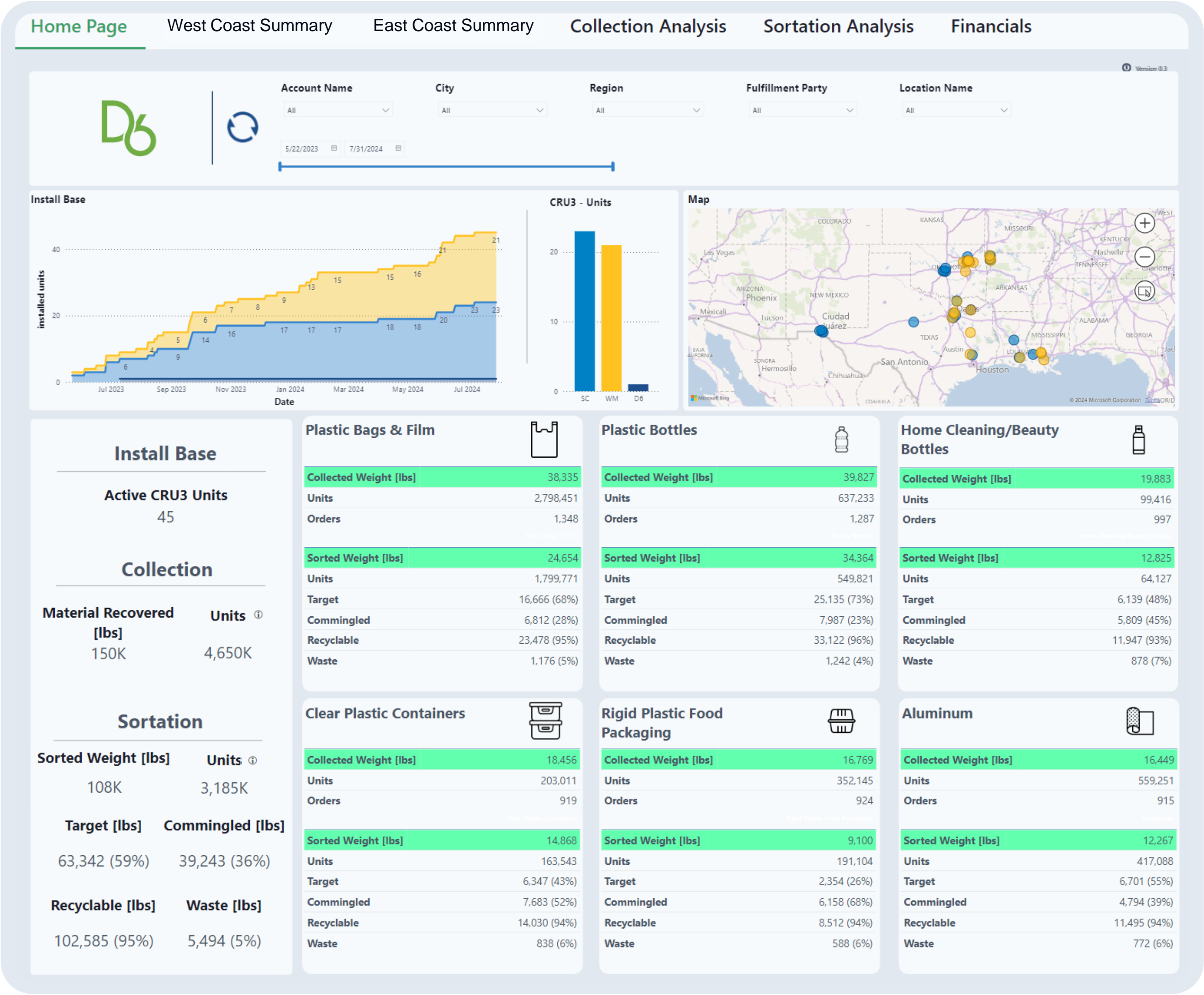
Visualise operational and Financial data on custom-built dashboard. Dive deeper into analysis of Collection, Sortation and Financial data.



CRU Dashboard

Can fully customize dashboards and reports based on criteria you select.

Collection data is uploaded by D6 and instantly available for analysis.





CRU Dashboard

Confidential

There are pre-built tabs with only EDC data for direct report export and simplified automatic reporting

CRU3 Dashboard

Edit Description

Home Page

West Coast Summary

East Coast Summary

Collection A

D6

Account Name

City

Region

All

All

All

5/22/2023

7/31/2024

Install Base

CRU3 - Units

Active CRU3 Units

21

Collection

Material Recovered [lbs]

70K

Units ①

2,139K

Sortation

Sorted Weight [lbs]

60K

Units ①

1,702K

Target [lbs]

36,081 (60%)

Commingled [lbs]

21,121 (35%)

Recyclable [lbs]

57,202 (95%)

Waste [lbs]

3,073 (5%)

Plastic Bags & Film

Collected Weight [lbs]

17,218

Units

1,256,915

Orders

617

Sorted Weight [lbs]

12,486

Units

911,508

Target

8,546 (68%)

Commingled

3,351 (27%)

Recyclable

11,897 (95%)

Waste

590 (5%)

Clear Plastic Containers

Collected Weight [lbs]

7,500

Units

82,496

Orders

393

Sorted Weight [lbs]

6,982

Units

76,807

Target

2,965 (42%)

Commingled

3,622 (52%)

Recyclable

6,586 (94%)

Waste

396 (6%)

Rigid Plastic Food Packaging

Collected Weight [lbs]

6,391

Units

134,204

Orders

388

Sorted Weight [lbs]

3,817

Units

80,150

Target

983 (26%)

Commingled

2,576 (67%)

Recyclable

3,559 (93%)

Waste

258 (7%)

Aluminum

Collected Weight [lbs]

8,726

Units

296,693

Orders

412

Sorted Weight [lbs]

7,434

Units

252,766

Target

4,070 (55%)

Commingled

2,903 (39%)

Recyclable

6,972 (94%)

Waste

462 (6%)

Print

Export PDF

Export PBIX

Refresh Dashboard

Data Source Summary

Access Settings

Set as Home Dashboard

Remove from Favorites

View Description

Manage Labels 1

View History

Edited about 2 months ago

Delete

Modified: 7/24/2024 3:20 PM

Version 0.3

WEST VIRGINIA

KENTUCKY

VIRGINIA

NASHVILLE

KANSAS

MISSISSIPPI

MISSOURI

ARKANSAS

LOUISIANA

ALABAMA

GEORGIA

FLORIDA

JACKSONVILLE

Beauty

10,909

54,544

461

8,330

41,651

3,981 (48%)

3,770 (45%)

7,751 (93%)

579 (7%)

16

CRU Dashboard

User can filter data for specific Account Name, City, Region, Fulfilment Party and/or specific CRU Unit and adjust it by time window of interest.

Confidential



Confidential

Home PageWest Coast SummaryEast Coast SummaryCollection AnalysisSortation AnalysisFinancials

D6

Account Name

All

City

All

Region

All

Location Name

All

Fulfillment Party

All

Material Type

All

5/22/2023

7/31/2024

lbs

units

Collected Weight in [lbs]

Aluminum 10.99%

Rigid Plastic Food Packaging 11.2%

Clear Plastic Containers 12.33%

Home Cleaning/Beauty Bottles 13.28%

Plastic Bottles 26.6%

Plastic Bags & Film 25.6%

80K

60K

40K

20K

0K

SC

WM

Map View

Table View

Collected Weight in [lbs]

Region	Total Weight	Avg Weight per Order	Weeks in Service	Weekly Pick-up Frequency
Region 1	49,305	20	68	0.96
Region 2	47,041	32	67	0.72
Region 3	17,764	26	54	0.72
Region 4	16,379	20	50	0.97
Region 5	11,514	35	62	0.50
Region 6	3,692	8	46	0.45
Region 7	2,249	13	13	0.50
Region 8	704	29	13	0.29
Total	149,718	23	68	0.72

Collected Weight in [lbs] by material stream

Aluminum

Clear Plastic Containers

Home Cleaning/Beauty Bottles

Plastic Bags & Film

Plastic Bottles

Rigid Plastic Food Packaging

20K

15K

10K

5K

0K

2023 Qtr 2 May

2023 Qtr 2 June

2023 Qtr 3 July

2023 Qtr 3 August

2023 Qtr 3 September

2023 Qtr 4 October

2023 Qtr 4 November

2023 Qtr 4 December

2024 Qtr 1 January

2024 Qtr 1 February

2024 Qtr 1 March

2024 Qtr 2 April

2024 Qtr 2 May

2024 Qtr 2 June

2024 Qtr 3 July

237.7

1,751.0

2,473.8

4,171.0

6,711.9

9,326.8

10,077.3

9,542.0

9,462.0

11,388.0

13,710.2

13,705.8

17,326.9

18,413.3

21,420.3

Collected Weight in [lbs] by location

Avg

Total

Aluminum

Clear Plastic Containers

Home Cleaning/Beauty Bottles

Plastic Bags & Film

Plastic Bottles

Rigid Plastic Food Packaging

#0354

#658

#3264

#1245

#0963

#3215

#9873

#4567

#1234

#9863

#4879

#1598

#8681

#4243

#6219

#9116

#3268

#3139

#1205

#0409

22,503

21,061

11,354

7,736

7,498

7,497

6,988

6,309

6,042

4,263

3,949

3,585

2,909

2,713

2,531

2,523

2,307

0K

5K

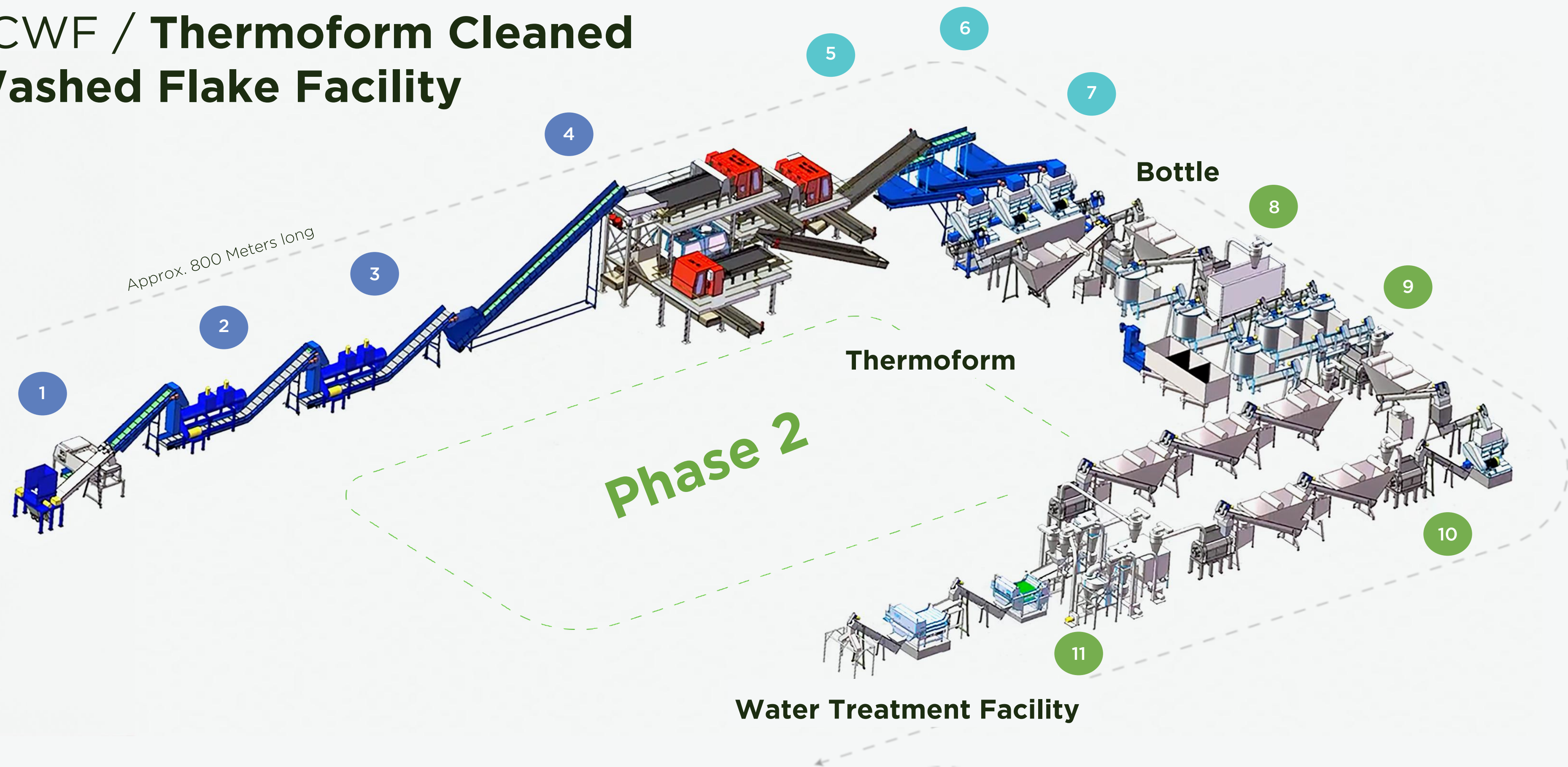
10K

15K

20K

Weight [lb]

TCWF / Thermoform Cleaned Washed Flake Facility



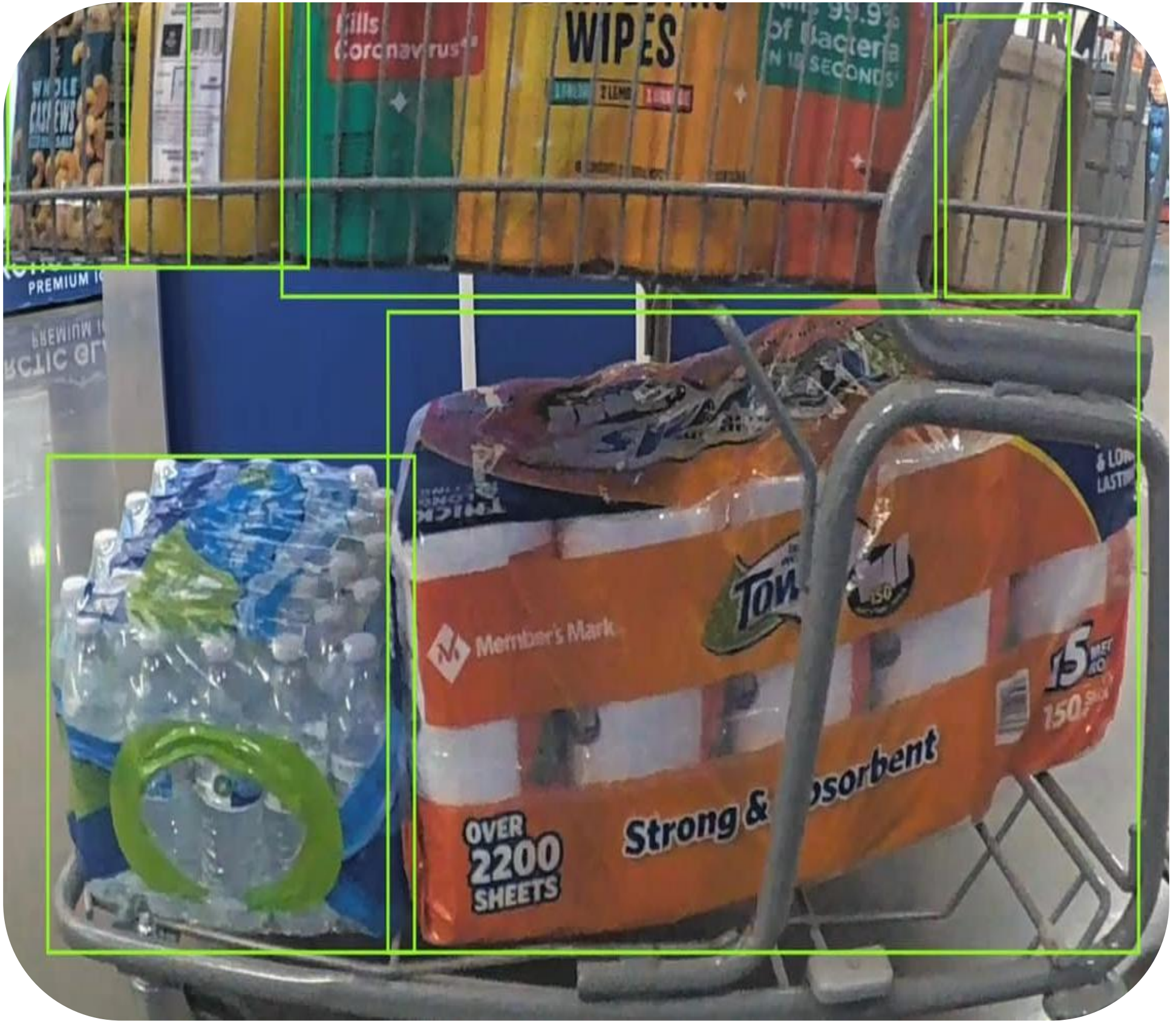
- 1 Debaler
- 2 Material Trommel
- 3 Delabeler
- 4 Optical Sorters & Eddy Current Separator

- 5 Tray/Bottle Sortation
- 6 Material Grinding Point
- 7 Flake Sortation

- 8 Gravity Tank
- 9 Hot Washing Tank
- 10 Impurity Cleansing Tanks
- 11 Post Consumer PET Bagging Station

Retail Ready RFID

Confidential



Retail Ready RFID

Confidential



Kroger adopts Avery Dennison RFID sensors for fresh, waste-free food supply

28 OCTOBER 2024

Avery Dennison has partnered with The Kroger Co. to achieve item-level digital identification via RFID – aiming to keep food fresher, lessen waste, and help associates optimize their time by automating inventories.



SUSTAINABLE PACKAGING | RECYCLING

RFID at the Intersection of Sustainable and Smart Packaging

RFID labels present substantial opportunities and challenges alike to packaging's sustainability chops. Experts are bullish on overcoming obstacles around material miscibility, and unlocking the sortation-improvement potential that RFID labeling poses.

By — Matt Reynolds

Sep 13, 2024

Tagged TX Test



Working Towards...

Carbon Negative Strategy

Working towards becoming carbon negative by 2035+.

Transparency

(Vertically Integrated Waste Stream)

Traceability

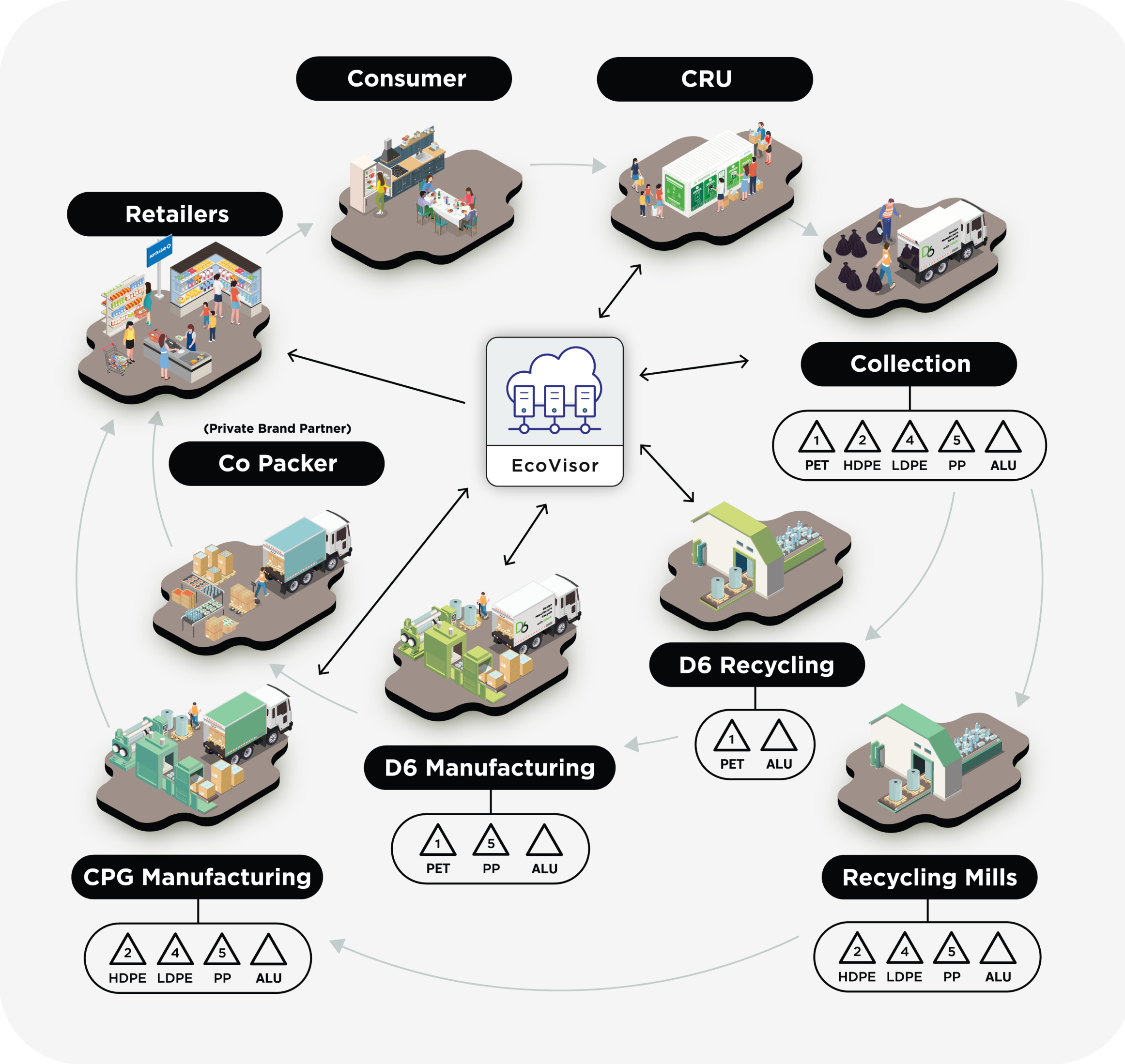
(NAV, Last Mile, RFID)

Auditability

(EcoVisor, APR, Green Circle Certification)

Accountability

(Responsible End Market)



Case Study – Sulphur Springs

Confidential



Since 2023, we have collected over **41,000 lbs.** of materials that would have otherwise been sent to the landfill **just from the unit** in Sulphur Springs.

That’s like having a whole herd of **25 Texas Longhorns** worth of “trash” lined up.

- No cost to taxpayers
- Clean and well-maintained
- Supplements existing recycling infrastructure
- Accepts hard-to-recycle items not collected curbside



CRU Activation/Engagement

Let's recycle together!




Confidential

Contact Info



Edward Dominion

 edominion@d6inc.com

 (503) 867 1430

 Edward.Dominion

