

MAKING IT COUNT: ACHIEVING, MEASURING AND REPORTING RESULTS WITH DATA



ALISON TURNER

Senior Economic Development Researcher
Argonne National Laboratory

KATIE LENZE

Community Development Coordinator
North Central Pennsylvania Regional
Planning Commission



Argonne National Laboratory is a
U.S. Department of Energy laboratory
managed by UChicago Argonne, LLC.



This report was prepared by Argonne National Laboratory using Federal funds under Award ED22HQ312019 from the Economic Development Administration, U.S. Department of Commerce. The statements, findings, conclusions, and recommendations are those of the author(s) and do not necessarily reflect the views of the Economic Development Administration or the U.S. Department of Commerce.

November 7, 2023
NADO ATC Conference
Cleveland, Ohio

AGENDA

10:00am – Data from the National Economic Research and Resilience Center

10:30am - Intro to the North Central PA Dashboard

10:50am - Full Panel Questions

Quick break

11:20am - Discovery of the upgraded NERDE and EDCI tools: interactive session

11:45am - Small Group Discussions



U.S. ECONOMIC DEVELOPMENT ADMINISTRATION

RESEARCH AND NATIONAL TECHNICAL ASSISTANCE COHORT



NATIONAL ECONOMIC RESEARCH & RESILIENCE CENTER

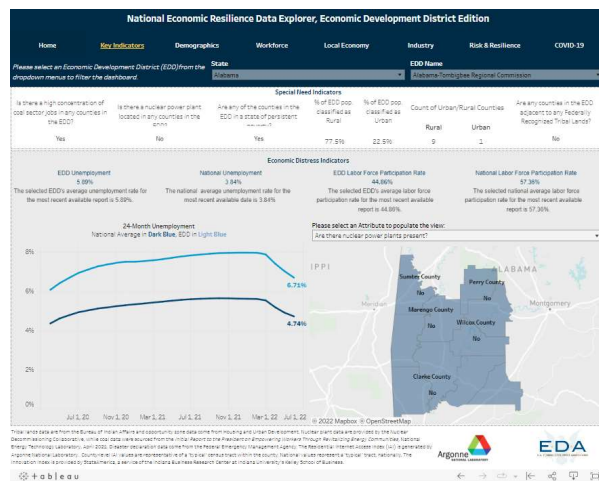
About Us

- We provide innovative and transparent economic data access, research, and analysis to support and strengthen economic development and resilience in communities across the nation.
- Find us at:
<https://www.anl.gov/dis/national-economic-research-resilience-center>



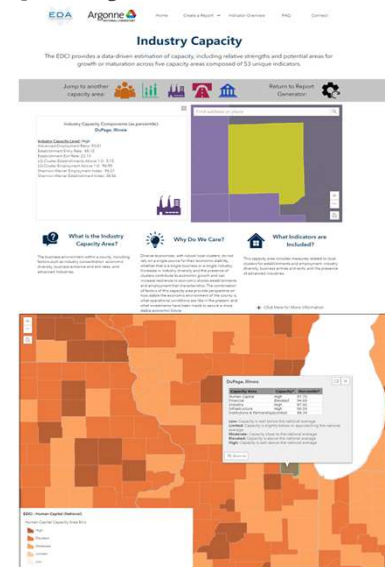
OUR TOOLS

National Economic Resilience Data Explorer



Baseline economic context

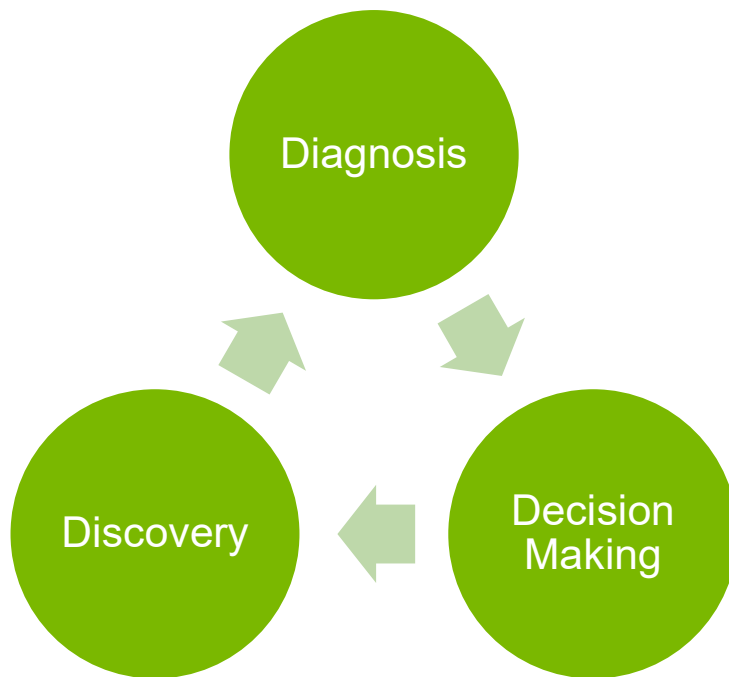
Economic Development Capacity Index



Assessment of county-level capacity, strengths, and opportunities for investment

Contact: NERRC@anl.gov

THE 3-D PRINCIPALS OF DATA



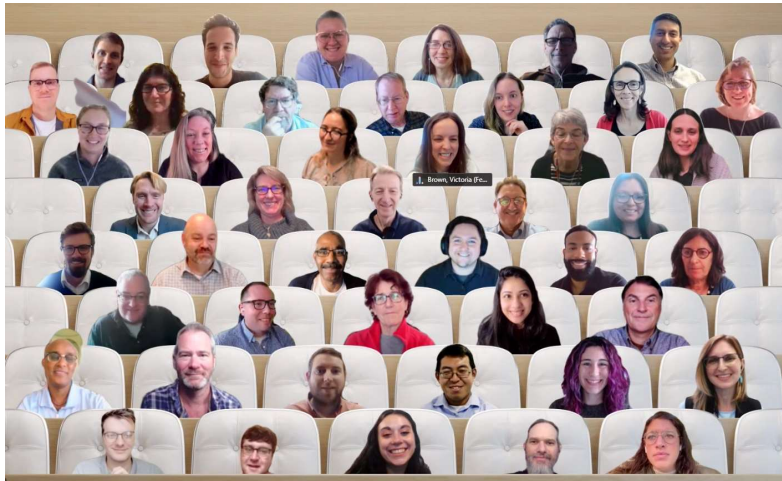
- Discovery
 - Asking questions
 - Understanding Space, Time, and Source
- Diagnosis
 - Evaluation of quality
 - Relationships between metrics
- Decision Making
 - Coming back to the question

DATA USE – BY THE NUMBERS

Results from a January 2020 NADO Survey

- 52% of identified data sources were national (Census, BEA, BLS etc)
- 27% mentioned State specific data sources
- Demographics data is the most widely accessed
- Clear desire for data around:
 - Labor market
 - Economic forecast
 - Corporate interest

AN INFORMED UPGRADE TO THE NERDE



Who?

- Census The Opportunity Project (TOP) Sprint
- User Advocate Sessions

What?

- Increased geographic functionality
- Enhanced API
- My Community Report

AN UPDATE TO THE ECONOMIC DEVELOPMENT CAPACITY INDEX (EDCI)

Tracking Local Capacity Over Time



What is Economic Development?

Economic Development: Creates the conditions for economic growth and improved quality of life by expanding the capacity of individuals, firms, and communities to maximize the use of their talents and skills to support innovation, lower transaction costs, and responsibly produce and trade valuable goods and services



What do we mean by Capacity?

Capacity: The interrelated set of institutions, resources, knowledge, skills, and networks that help determine a region's ability to implement economic development activities



Infrastructure



Human Capital



Industry



Financial



Institutions &
Partnerships

NORTH CENTRAL PENNSYLVANIA REGIONAL DEVELOPMENT OFFICE

KATIE LENZE



**U.S. DEPARTMENT OF
ENERGY**

Argonne National Laboratory is a
U.S. Department of Energy laboratory
managed by UChicago Argonne, LLC.

E·D·A
U.S. ECONOMIC DEVELOPMENT ADMINISTRATION

Argonne 
NATIONAL LABORATORY



North Central Pennsylvania Regional Planning and Development Commission Interactive Dashboard: A Modern Approach to the CEDS

Katie Lenze
Community Development Coordinator



Background and Development

- EDA Cares
- Consultant: Atlas Community Studios
- Regional Stakeholder Collaboration



Atlas Video- [Interactive CEDS and Data Dashboard for North Central PA \(loom.com\)](#)

Interactive Dashboard



SCAN HERE

or

visit: ceds.ncentral.com

Guiding Principles

Click to navigate to the individual page

Expand and strengthen employment and education opportunities that provide stable family wage jobs.

Invest in entrepreneurship and home-grown business development to build a sustainable, diverse economy.

Preserve and invest in the region's natural and cultural assets to strengthen economic potential.

Create and or improve reliable, consistent access to critical infrastructure in North Central Pennsylvania

Provide sufficient availability of right-sized, right-priced housing throughout each county within the North Central Pennsylvania region

Use the dropdown below to filter the data by county.

County Name

All

Hold Ctrl (Windows) or Cmd (Mac) to select multiple counties.

North Central Pennsylvania Counties



Dashboard Metrics

- 50 Metrics
- 5 Guiding Principal Pages

People Living in Poverty

The CEDS dashboard uses the federally recognized poverty level to determine poverty-level hourly or annual incomes. The federal poverty level is the amount of annualized income earned by a household, below which they would be eligible to receive certain welfare benefits. This is the federally identified minimum amount of income required by a family for food, clothing, transportation, shelter, and other necessities.

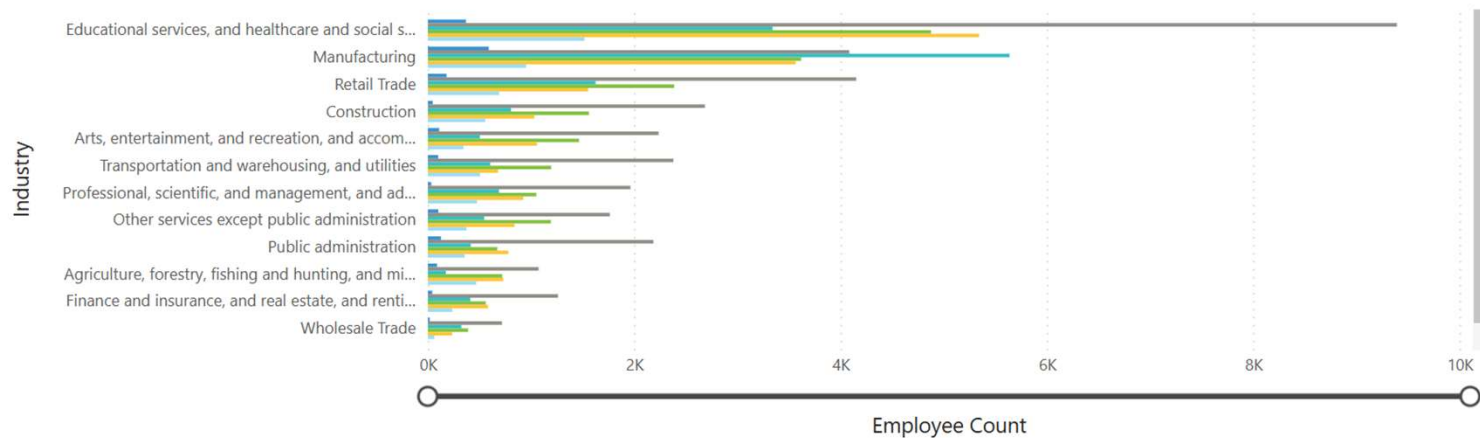
Source: U.S. Census Bureau, ACS 2021 5-Year Estimates

| County | Individuals Living in Poverty | Percentage |
|-------------------|-------------------------------|------------|
| Cameron County | 733 | 15.95% |
| Clearfield County | 11,031 | 13.67% |
| Elk County | 2,845 | 9.17% |
| Jefferson County | 6,368 | 14.31% |
| McKean County | 5,595 | 13.76% |
| Potter County | 2,167 | 13.15% |

Employment Counts by Occupational Sector

Source: U.S. Census Bureau, 2021 ACS 5-Year Estimates

County ● Cameron County ● Clearfield County ● Elk County ● Jefferson County ● McKean County ● Potter County



Platform & Data Sources



- Microsoft POWER BI
- Public Data Sources
 - US Census Bureau
 - Federal Reserve Economic Data (FRED)
 - Economic Impact of Travel and Tourism in PA- 2020 Report for PA Tourism Office
 - MTI's Living Wage Calculator
 - PennDOT
- API (Application Programming Interface) Call Components

Trend Tracking

- Visual Indication of Trends in the Region
- Five Identified Strategic Priorities
- Dashboard Subcommittee
 - Yearly Update
 - Bi-monthly

 Growing Pains  Holding Steady  Barreling Ahead

Overall Trends of the CEDS Guiding Principles



Expand and strengthen employment and education opportunities that provide stable family wage jobs



The Future



- More Collaboration
- Interactive Dashboard Training
- Increase Funding Requests
- Regional Projects
- Educating the North Central Population



Thank you



Katie Lenze
klenze@ncentral.com
www.ncentral.com

PANEL QUESTIONS



U.S. DEPARTMENT OF
ENERGY

Argonne National Laboratory is a
U.S. Department of Energy laboratory
managed by UChicago Argonne, LLC.

E·D·A
U.S. ECONOMIC DEVELOPMENT ADMINISTRATION

Argonne 
NATIONAL LABORATORY

BREAK – 5 MINUTES

10:00am – Data from the National Economic Research and Resilience Center

10:30am - Intro to the North Central PA Dashboard

10:50am - Full Panel Questions

Quick break

11:20am - Discovery of the upgraded NERDE and EDCI tools: interactive session

11:45am - Small Group Discussions



Argonne National Laboratory is a
U.S. Department of Energy laboratory
managed by UChicago Argonne, LLC.



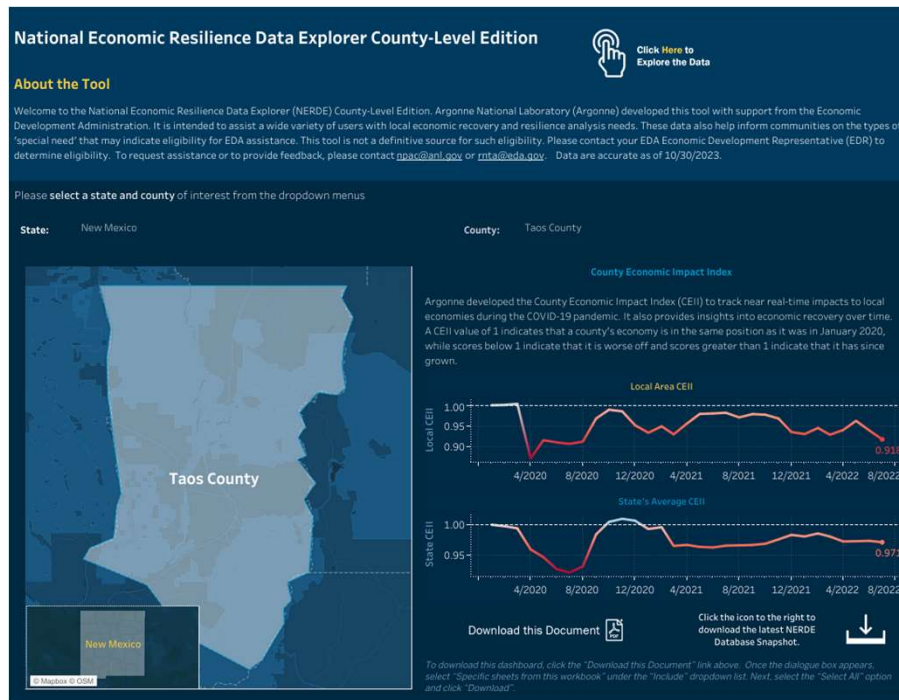
U.S. ECONOMIC DEVELOPMENT ADMINISTRATION



DATA TOOL DISCOVERY

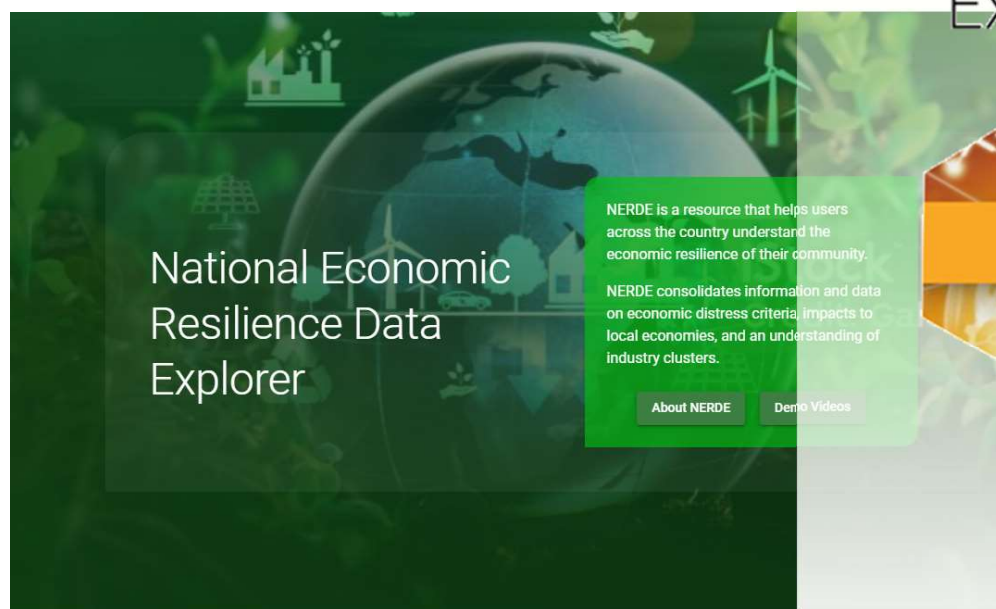
EDCI/NERDE INTERACTIVE SESSION

THE NATIONAL ECONOMIC RESILIENCE DATA EXPLORER



UPDATES TO THE TOOL

Explore, Discover, Research





MyCommunity Report

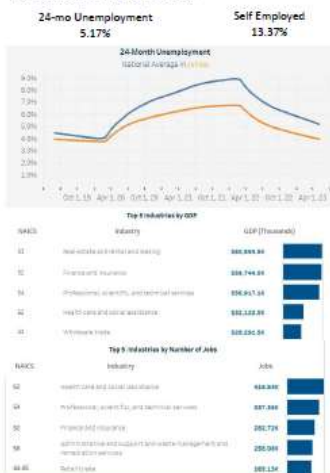
Cook County, IL
County
No EDD Office
EDA Region:
Chicago
017031
8/29/23

Narrative text: about the community –
population, poverty, health insurance, 24 month
unemployment, KEY INDICATORS

DEMOGRAPHICS

| | Total | Percent | Compared to National |
|---------------------------------|----------------|---------|----------------------|
| Total Population | 5,265,398 | | 1.6% |
| | Total | Percent | Compared to National |
| Under 18 | 1,151,543 | 21.87% | -0.64% |
| Between 18-64 | 3,339,315 | 63.42% | 1.97% |
| 65 and over | 746,107 | 14.17% | -1.87% |
| | Race/Ethnicity | | |
| American Indian | 4,212 | 0.08% | -0.51% |
| Asian | 392,799 | 7.46% | 1.83% |
| Black/African American | 1,192,613 | 22.65% | 10.46% |
| Hispanic/Latino | 1,346,888 | 25.58% | 7.14% |
| Native Hawaiian | 1,053 | 0.02% | -0.15% |
| Other Race | 17,902 | 0.34% | -0.93% |
| Two or More | 117,945 | 2.24% | -0.93% |
| White | 2,191,985 | 41.63% | -17.82% |
| | Sex | | |
| Male | 2,694,831 | 51.18% | 0.68% |
| Female | 2,540,506 | 48.42% | -1.08% |
| | Education | | |
| Less than high school | 679,236 | 12.90% | 0.71% |
| High School Graduate | 1,266,328 | 24.05% | -4.96% |
| Some College, no degree | 1,019,908 | 19.37% | -2.54% |
| Bachelors Degree | 1,343,203 | 25.31% | 2.96% |
| Graduate or professional degree | 957,249 | 18.18% | 3.85% |

WORKFORCE & INDUSTRY



Narrative text about the sources, "why do I care" type information... etc...



MyCommunity Report

Cook County, IL
County
No EDD Office
EDA Region:
Chicago
017031
8/29/23

Each community faces unique challenges when planning for the future, for your geography, the top three Community Resilience Challenges (CRCI FEMA) are

COMMUNITY INTERACTIONS



LACEII
SCEII



Understanding community interactions through people and trade

Largest trade partner - Canada, 31% of trade value (\$)

Top traded goods (total value \$USD, 2022) -
Nuclear Reactors & Parts - \$13,278,991,670
Vehicles, except railway or tramway - \$8,341,951,676
Pharmaceutical Products - \$7,718,930,478
Electric Machinery - \$7,442,844,018
Optic, Medic Or Surgical Instruments - \$4,255,945,046

Ten year change in trade volume (\$USD) - +15%

RESILIENCE

National Resilience Index - Very High
Community Resilience Challenges Index - 58/100
GINI Coefficient (Income Equality) - .07

Major Disaster Declarations, Past 5 Years (Table can scroll)

| Declaration Year | Declaration Number | Incident |
|------------------|--------------------|--------------------------|
| 2020 | 4429 | COVID-19 PANDEMIC |
| 2023 | 4729 | SEVERE STORMS AND FLOODS |

Top 9 Natural Hazard Risk - Click to learn more

| Hazard | Risk Rating |
|-------------------|---------------------|
| Tornado | Very High |
| Riverine Flooding | Very High |
| Heat Wave | Very High |
| Earthquake | Relatively Moderate |
| Strong Wind | Very High |

Data Citations
Demographics - ACS 2023 5-year estimates
Workforce & Industry - BLS, BEA
Community Coordination -
Resilience -
Equity -
You can find all data at the NERDE website



SMALL GROUP DISCUSSION SESSION



- Where is data most important in your work?
- What do you find the most challenging when working with data?
- What is your go to data resource?

THANK YOU!

PLEASE REACH OUT TO **NERRC@ANL.GOV** WITH QUESTIONS OR
COMMENTS ABOUT THE PRESENTATION

Katie Lenze

klenze@ncentral.com

www.ncentral.com

Alison Turner

turnera@anl.gov

(505)818-8858



Argonne National Laboratory is a
U.S. Department of Energy laboratory
managed by UChicago Argonne, LLC.

