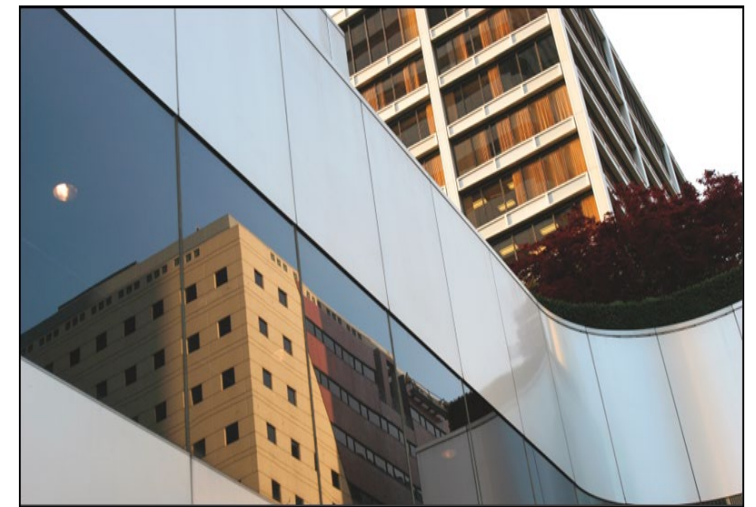


*Alignment: Using
An Academy
Approach*

*NADO Annual
Training Conference
November 8 - Cleveland, Ohio*



Today's Session

- Alignment and Academy Highlights
- Snapshots from Academy Participants
- Small group discussions
- Report Outs

Fueling Competitiveness Through Improved Strategic State-Regional Alignment



About the Center for Regional Economic Competitiveness (CREC) team



About the State Economic Development Executives (SEDE) Network



About this EDA Project

Purpose: Fueling Alignment Between States and Regions

Project Overview: Key Tasks for Enhancing Alignment Between States and EDDs

Research



CEDS/State Plan Database



USA Competes Upgrade



State Planning Grants Research

Education



Webinars



Curriculum for State Economic Development Leaders



Presentation, Blogs and White Papers



Knowledge Sharing Issue Briefs

Technical Assistance



Workshops and One-on-One



State Team Policy Academy



CREC

CENTER FOR REGIONAL ECONOMIC COMPETITIVENESS

Academy

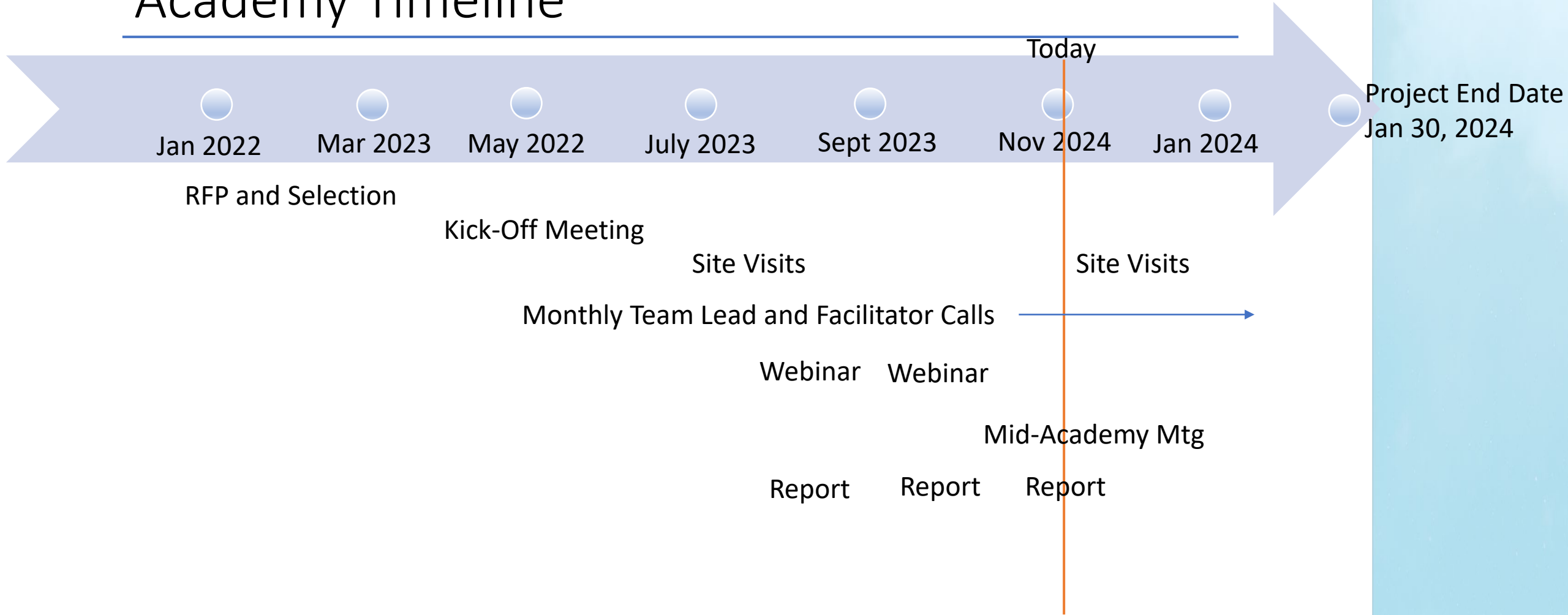
- Six states
 - ✓ Idaho
 - ✓ Colorado
 - ✓ Kansas
 - ✓ Louisiana
 - ✓ Michigan
 - ✓ Wisconsin
- Home Team and Core Team
- CREC Facilitators
- April - January



CREC

CENTER FOR
REGIONAL ECONOMIC
COMPETITIVENESS

Academy Timeline



Academy Team Feedback

How has Academy helped?

- Lead to relationships
- Expanding partnerships
- Facilitator has helped
- Creating singular vision

Address Roadblocks?

- Scheduling challenges
- Encouraging participation
- Changes in staff and leadership
- Capacity
- Breaking down silos

Improve Academy for Stretch?

- Highlight best practices and results
- EDA Press Release
- Keep moving forward
- Create a plan for continuing the work
- Renewed energy
- Connect with other teams
- Guide home team involvement

Create Your Alignment Academy

- Break into small groups
- One facilitator per group
- Q&A on facilitator's Academy and alignment experiences
- Participant discussion on how to apply technique
- Report Out!

Your Facilitators

- Matt McCauley – Sr. VP, Michigan Economic Development Corporation
- Jeff Hagan – CEO, Eastern Upper Peninsula Regional Planning & Development Commission
- Matthew Godinez – Director of Performance and Programming, Kansas Department of Commerce
- Michele McFarlane – Community Development Planner, Region IV Development Association (Idaho)