

Surviving a Hack



Hello!

Michael Rosenberg

Project & Communications
Coordinator

Western Arkansas Planning &
Development District



Overview

- ⬡ About WAPDD
- ⬡ So, What Happened?
- ⬡ Our Old Structure
- ⬡ Restoring the Data
- ⬡ The Move
- ⬡ Going Forward



Who is WAPDD?

Western Arkansas Planning &
Development District



Where we are located...



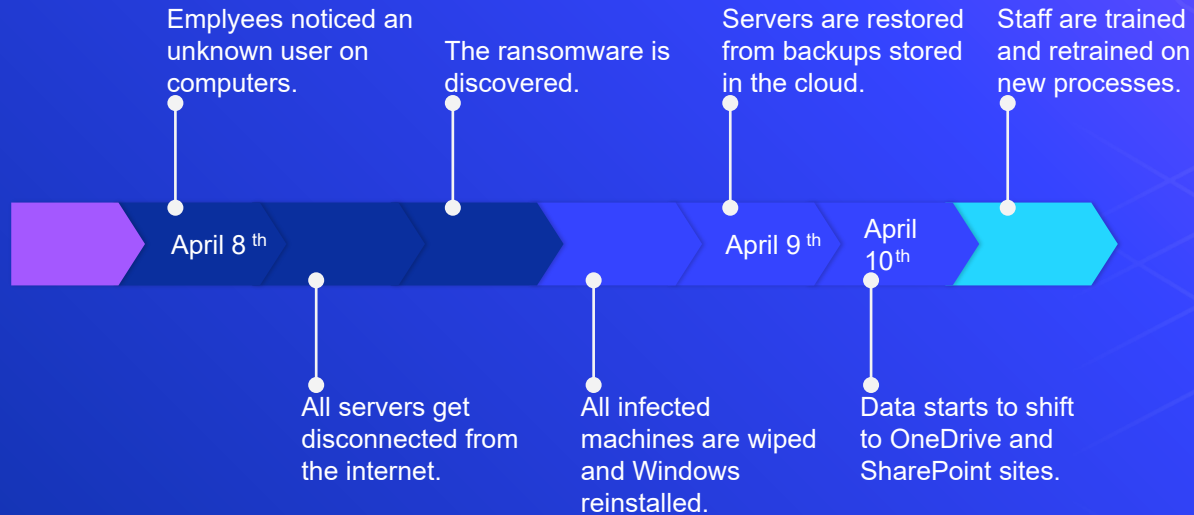
Departments

- ⬡ 911/Geographic Information Systems (GIS)
- ⬡ Community Development
- ⬡ Economic Development
- ⬡ Frontier Metropolitan Planning Organization (MPO)
- ⬡ Workforce Development
- ⬡ Western Arkansas Intermodal Authority (WAIA) Contract



So what
happened??

Timeline



Our Old Structure

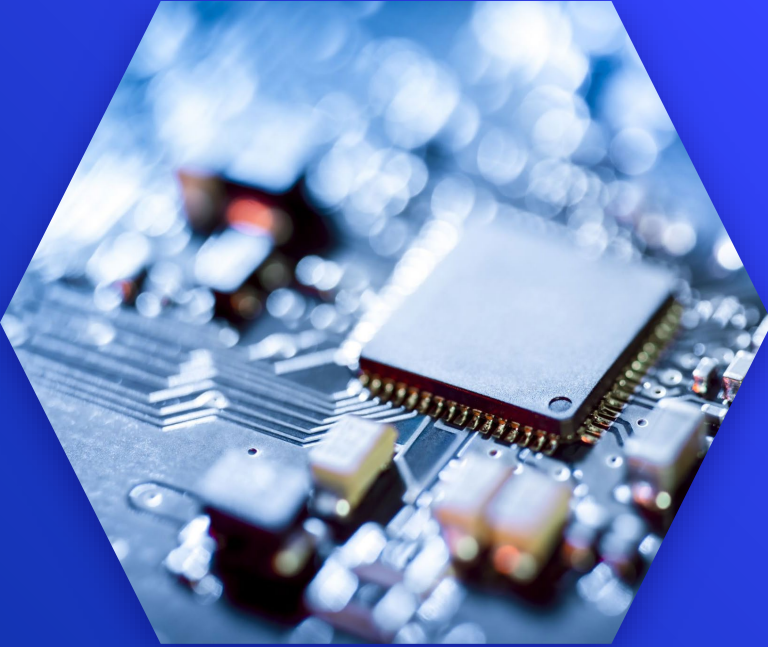
How we were doing business pre -hack.



How we stored data

- ⬡ NAS (Network Attached Storage)
- ⬡ Cloud Backup
- ⬡ Most users not using OneDrive, etc.





IT Infrastructure

- Locally managed users
- Email has been migrated to Microsoft 365 (non -profit)
- Data stored locally with a cloud backup
- Few employees using OneDrive

How did we restore the data?

Backup off -site

- Most data was recovered up to the day before the attack.
- Some backed up data was corrupted and had to be destroyed.

Users already on OneDrive

- Users retained all data.
- Any corrupted data was rolled back to the hour before it was infected.

The Move

Taking our data to the cloud.



Migrating to the cloud

- Utilizing Teams/SharePoint for shared resources
- OneDrive Backups
- Azure Active Directory



Going Forward

Embracing the
Microsoft 365 Platform



Microsoft 365

Azure Active Directory

- Cloud Based
- Single Sign -On
- Multi -Factor Authentication

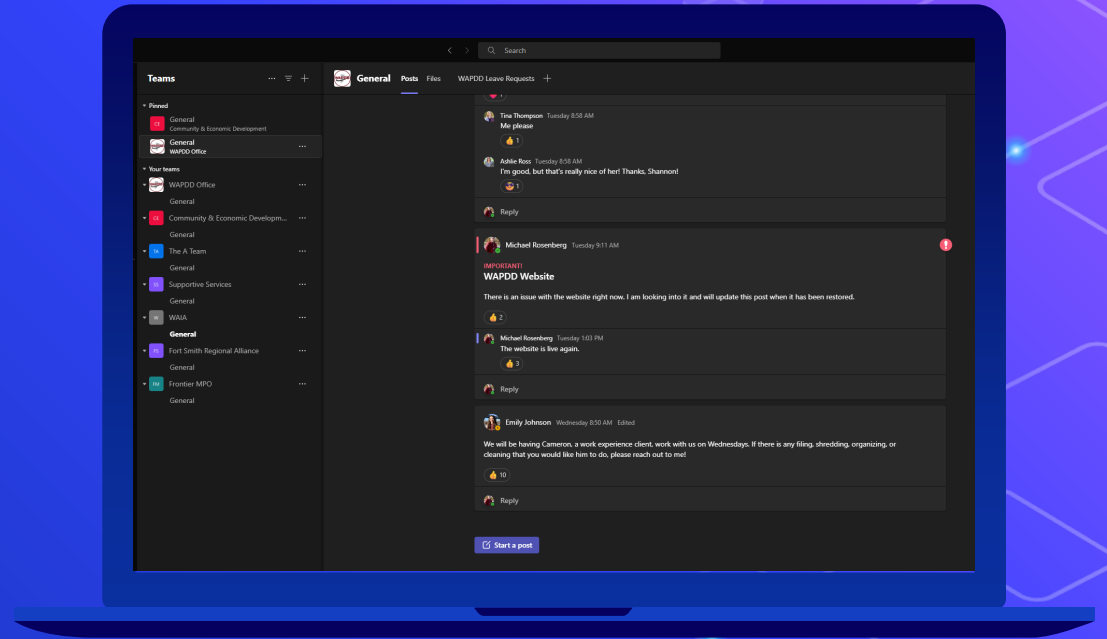
Teams/SharePoint

- Collaboration Platform
- Centralized location to communicate and collaborate
- Improved efficiency
- Has enabled the development of in - house PowerApps

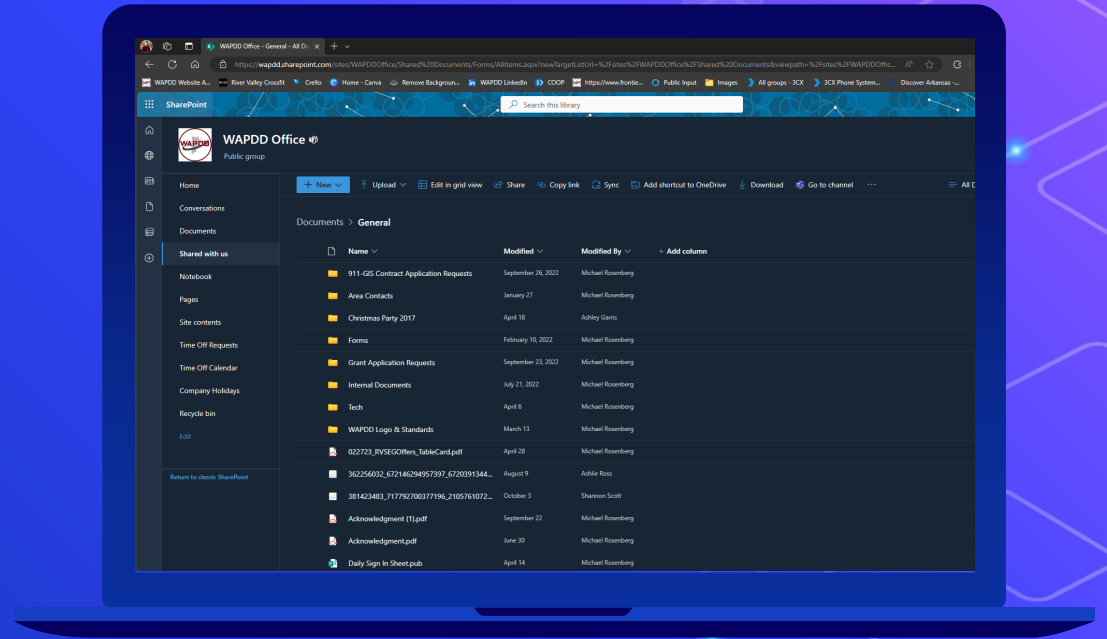
OneDrive

- Cloud based secure storage
- Employees can access their data anywhere
- Works with all other Microsoft 365 services

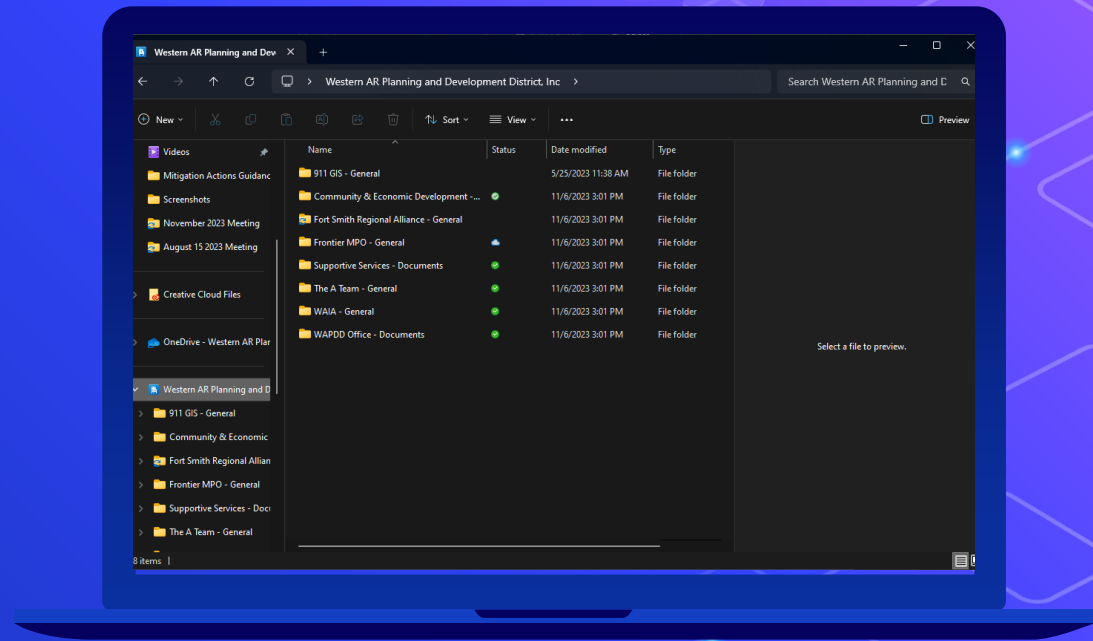
Microsoft Teams



Office SharePoint



File Structure



Custom PowerApps



“ Times of adversity
often bring about
the best changes.”

Thanks!

Any questions?

You can reach me at:

mrosenberg@wapdd.org



CYBER CASE STUDY

Shawn Hufstedler, Chief Operating Officer

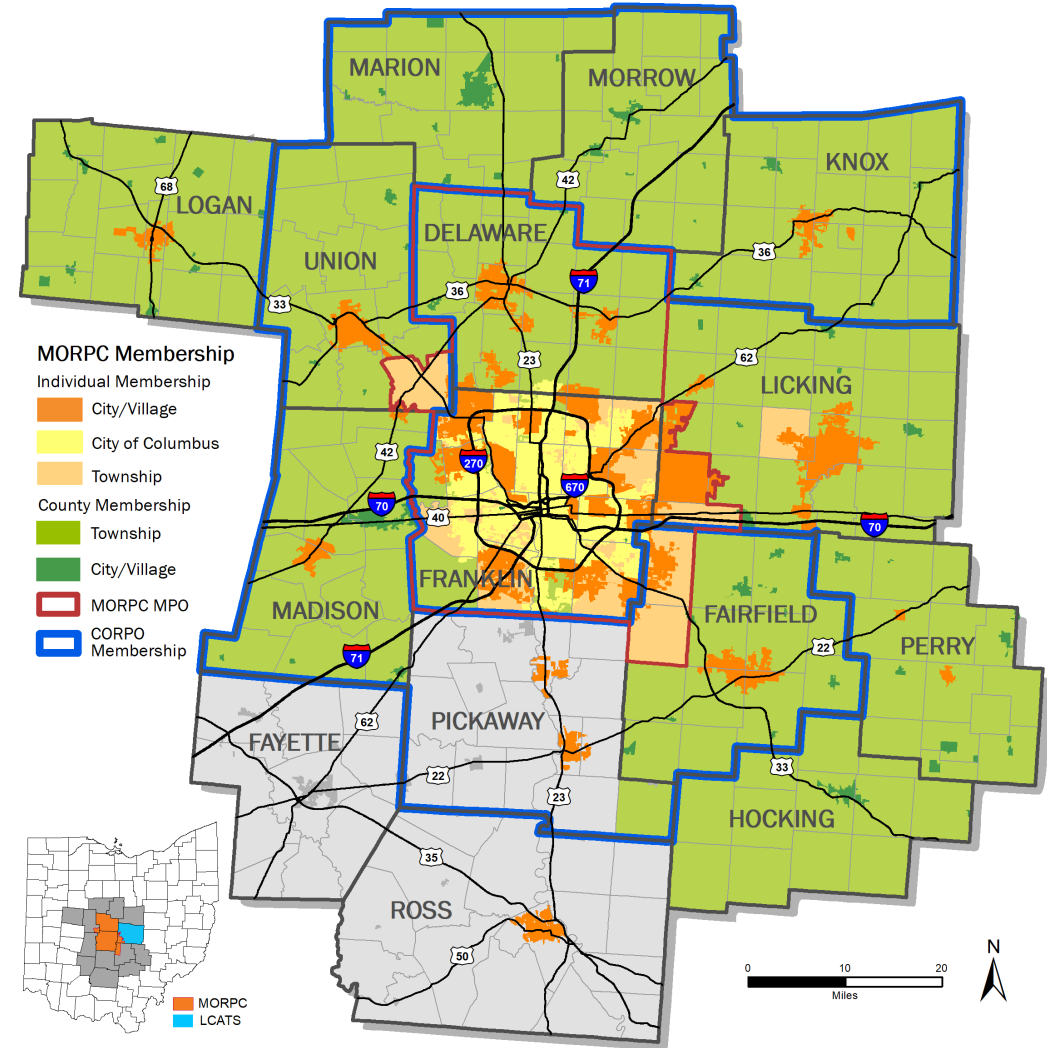


MID-OHIO REGIONAL
MORPC
PLANNING COMMISSION



ABOUT MORPC

- 85 members across 15 counties
- Drives the future prosperity and sustainability of the Central Ohio region
- Provides nonpartisan data analysis, community resources and long-range planning



THE EVENT



MORPC

- Sophisticated ransomware cyber attack
- Network penetration through compromised employee credentials
- Traditional ransomware approach – capture data and encrypt.



THE GOOD



**Cyber
Insurance**



**Most data is
public**



Backups



**End-point
protection**



**Cloud-based
software**

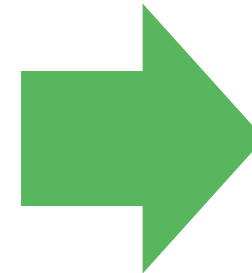
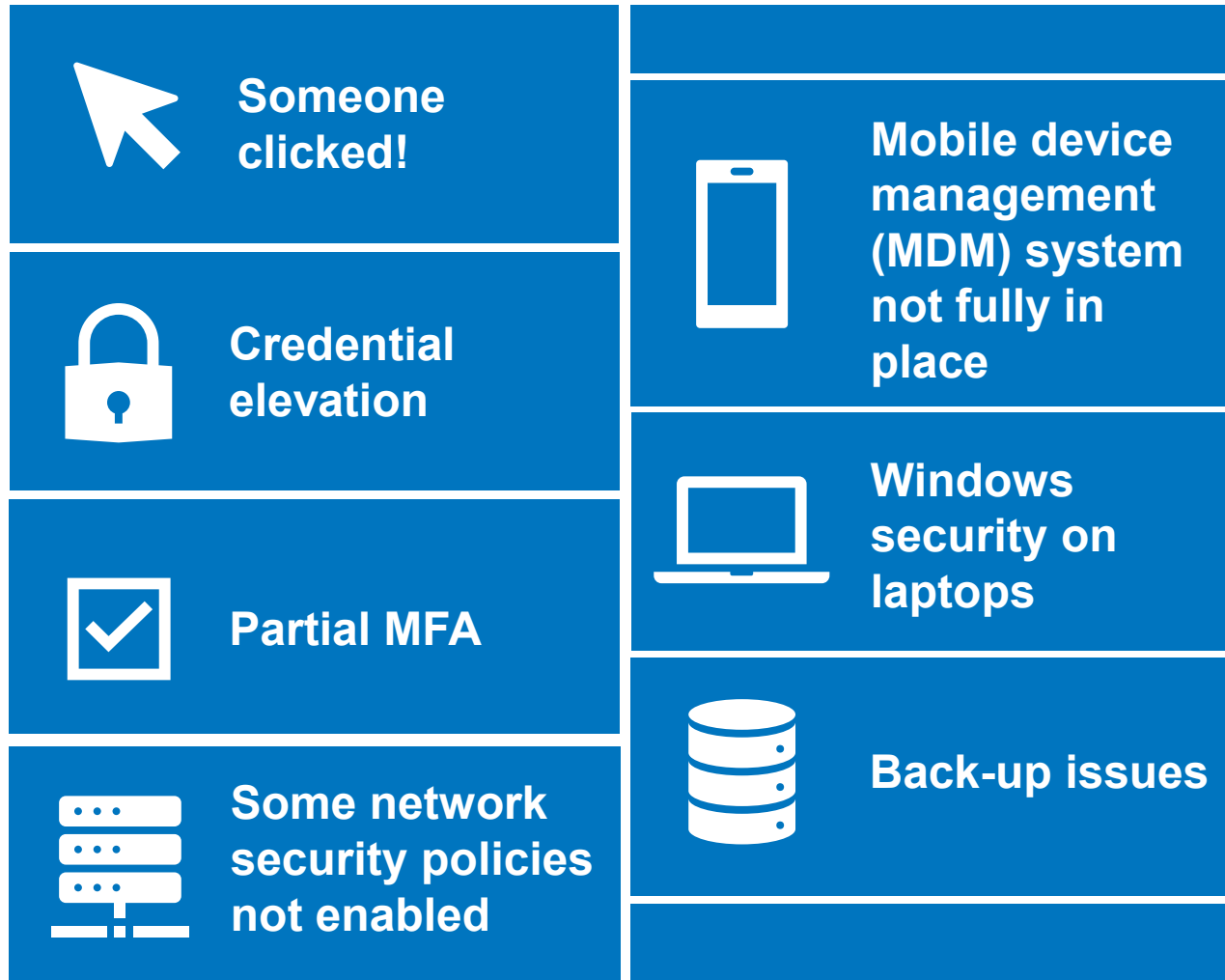


**Progressive network
improvement over
the years**



**Ability to continue
the majority of
work**

THE BAD



Productivity Loss

Ransom

More Risk

MOVING FORWARD



- Full MFA and additional Microsoft security policy implementation.
- Upgrades and enhancements
- 3rd party IT service – monitoring; testing
- End Point protection upgrade
- IT focused alerts and dashboards
- Microsoft Intune (MDM for mobile devices)
- Enhanced/restructured IT Team
- Actively engaging with state and local security experts
- Enhanced all staff cybersecurity training and internal communications
- More focus on cybersecurity
- Continued cyber-insurance



SHAWN HUFSTEDLER, CPA, CGFM, CTA

Chief Operating Officer

Mid-Ohio Regional Planning Commission

T: 614.233.4136

shufstedler@morpc.org



MID-OHIO REGIONAL
MORPC
PLANNING COMMISSION

