



# EDA's Networks Division

**driving connectedness**

Tori Brown  
Communities of Practice Coordinator  
[vbrown1@eda.gov](mailto:vbrown1@eda.gov)

# Networks Division Overview



EDA's growing Communities of Practice (CoPs), Economic Recovery Corps, and Equity Impact Investments initiatives bolster the capacity of economic development organizations from all angles.



## peer-to-peer learning

Our [Communities of Practice](#) partners facilitate peer learning and connections among economic developers confronting similar challenges across different places. Each community captures, organizes, and scales promising practices at a national level.



## on the ground support

The new [Economic Recovery Corps](#) will promote national connectivity by placing over 65 Fellows within local economic development organizations. The [Equity Impact Investments](#) program will build capacity in over 120 community development organizations supporting underserved populations.



## knowledge & insights

All EDA Networks programs and efforts will capture information and data real-time at a local level to scale future-focused and equitable economic development practices across the industry.

# Equity Impact Investments: Listening Sessions

NGIN is hosting listening sessions for practitioners to share their experiences on partnerships between economic development organizations and community-based organizations.

The insights from these sessions will shape the tools for Equity Impact Investments, a program helping community and economic organizations advance inclusive growth.

## **Economic Leaders**

April 13, 2023, 2:00 pm ET

<https://bit.ly/EDORegister2>

## **Community Leaders**

April 11, 2023, 1:00 pm ET

<https://bit.ly/CBORegister2>



# Networks Division Overview

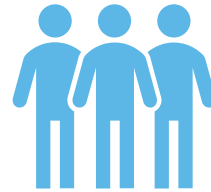


EDA's growing Communities of Practice (CoPs), Economic Recovery Corps, and Equity Impact Investments initiatives bolster the capacity of economic development organizations from all angles.



## peer-to-peer learning

Our [Communities of Practice](#) partners facilitate peer learning and connections among economic developers confronting similar challenges across different places. Each community captures, organizes, and scales promising practices at a national level.



## on the ground support

The new [Economic Recovery Corps](#) will promote national connectivity by placing over 65 Fellows within local economic development organizations. The [Equity Impact Investments](#) program will build capacity in over 120 community development organizations supporting underserved populations.



## knowledge & insights

All EDA Networks programs and efforts will capture information and data real-time at a local level to scale future-focused and equitable economic development practices across the industry.

# EDA's Communities of Practice are fostering a more accelerated, resilient, and equitable economic recovery

## Activities

- Networking & Events
- Trainings & Peer Learning
- TA and Coaching
- Resource Creation & Sharing

## Outputs

- Individuals served
- Organizations served
- Emerging practices identified
- Tools developed

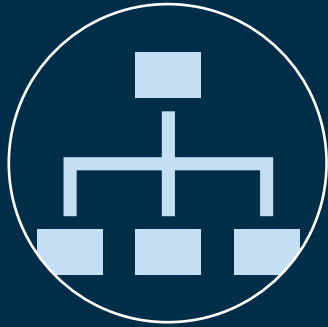
## Outcomes

- ↑ **Connectedness** within and across cohorts
- ↑ **Awareness** of best practices
- ↑ **Capacity and effectiveness** of CoP participant organizations

## Impact

More accelerated, resilient, equitable, and competitive regional economic growth.

# Our new Communities of Practice span a range of systems, topics, and programs



## systems

- Economic Development Districts
- Revolving Loan Funds
- Indigenous Economic Development



## topics

- Coal
- Manufacturing
- Technology-Based Economic Development



## programs

- Build Back Better Regional Challenge
- Good Jobs Challenge

learnings

# EDD & RLF Communities of Practice

an important piece of a larger effort

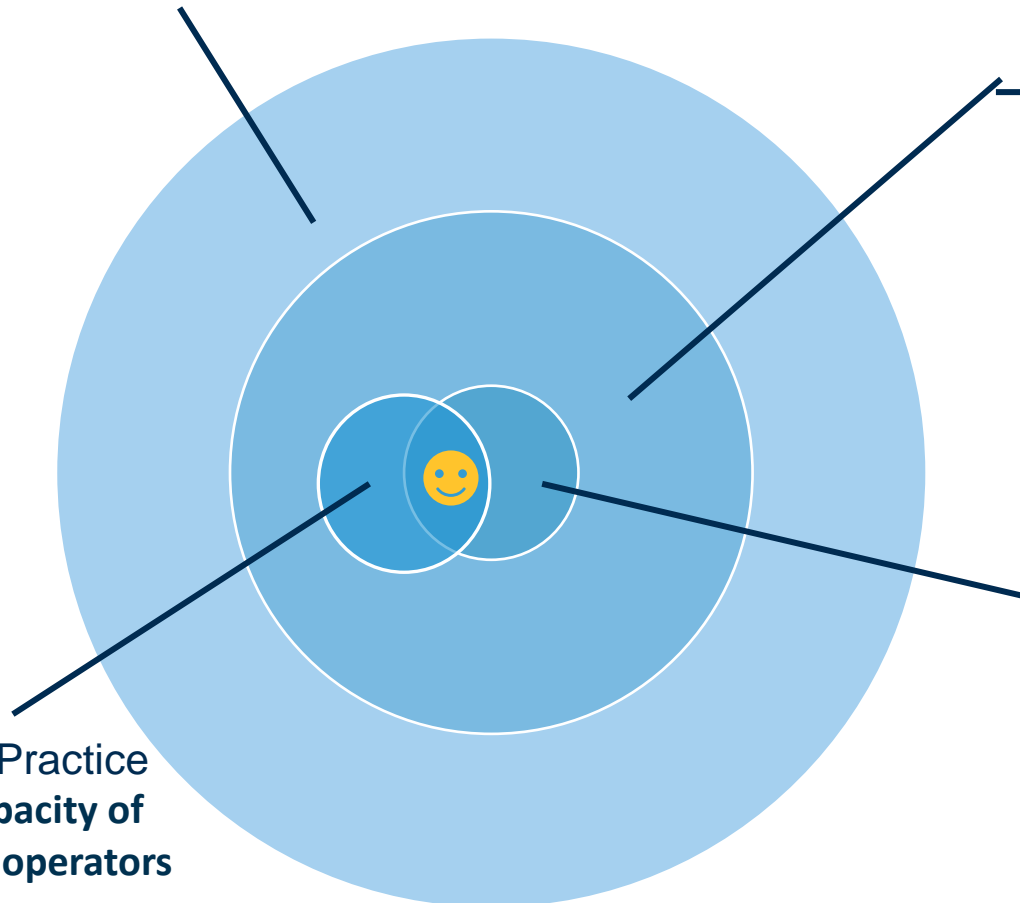


Networks  
connecting, and bolstering the capacity of,  
economic development organizations

Communities of Practice  
capturing, organizing, and scaling practices at a  
national level

EDD Community of Practice  
equipping Economic Development  
Districts to achieve their economic  
development goals

RLF Community of Practice  
strengthening the capacity of  
Revolving Loan Fund operators



# our invitation to you

