

Building Communities and Capacity: An Update from EDA

Brittany Sickler, Networks Program Manager

Tori Brown, Communities of Practice Coordinator

David Ives, Deputy Director, Performance, Research and National Technical Assistance Division





Building Communities and Capacity: An Update from EDA

Afternoon with the Districts

Dave Ives
Deputy Director, PRNTAD
dives@eda.gov

Brittany Sickler
Networks Program Manager
bsickler@eda.gov

Tori Brown
Communities of Practice Coordinator
vbrown1@eda.gov

Networks Division Overview

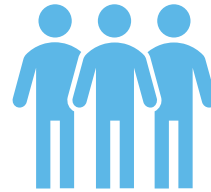


EDA's growing Communities of Practice (CoPs), Economic Recovery Corps, and Equity Impact Investments initiatives bolster the capacity of economic development organizations from all angles.



peer-to-peer learning

Our [Communities of Practice](#) partners facilitate peer learning and connections among economic developers confronting similar challenges across different places. Each community captures, organizes, and scales promising practices at a national level.



on the ground support

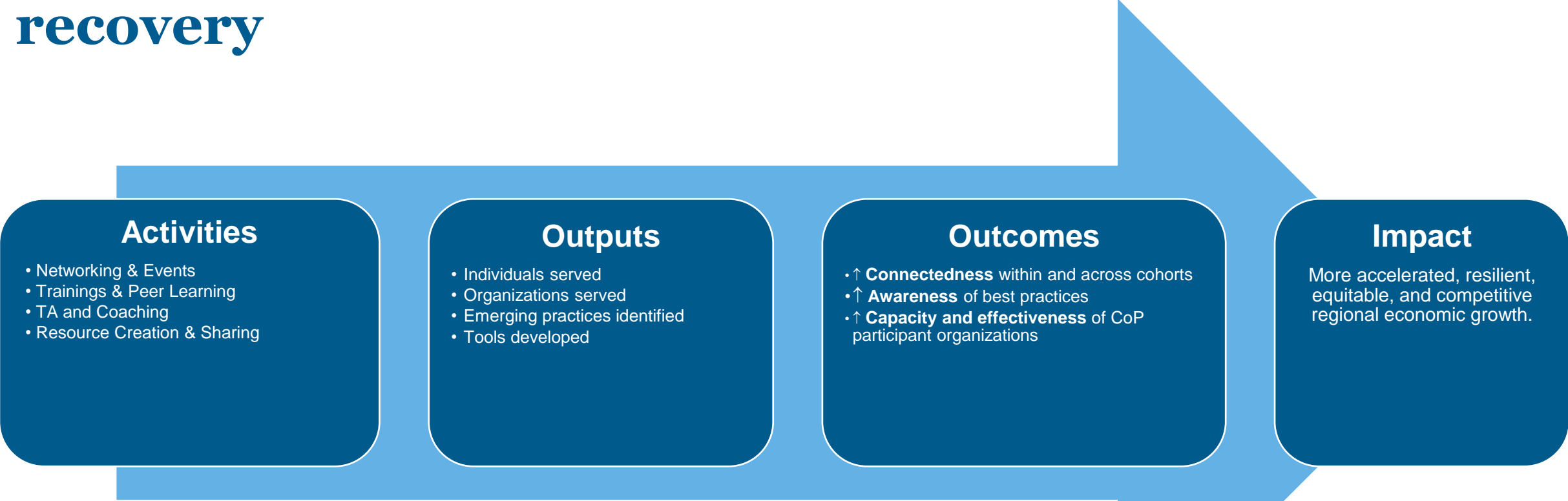
The new [Economic Recovery Corps](#) will promote national connectivity by placing over 65 Fellows within local economic development organizations. The [Equity Impact Investments](#) program will build capacity in over 120 community development organizations supporting underserved populations.



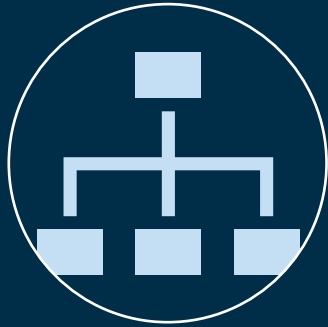
knowledge & insights

All EDA Networks programs and efforts will capture information and data real-time at a local level to scale future-focused and equitable economic development practices across the industry.

EDA's Communities of Practice are fostering a more accelerated, resilient, and equitable economic recovery



Our new Communities of Practice span a range of systems, topics, and programs



systems

- Economic Development Districts
- Revolving Loan Funds
- Indigenous Economic Development



topics

- Coal
- Manufacturing
- Technology-Based Economic Development



programs

- Build Back Better Regional Challenge
- Good Jobs Challenge

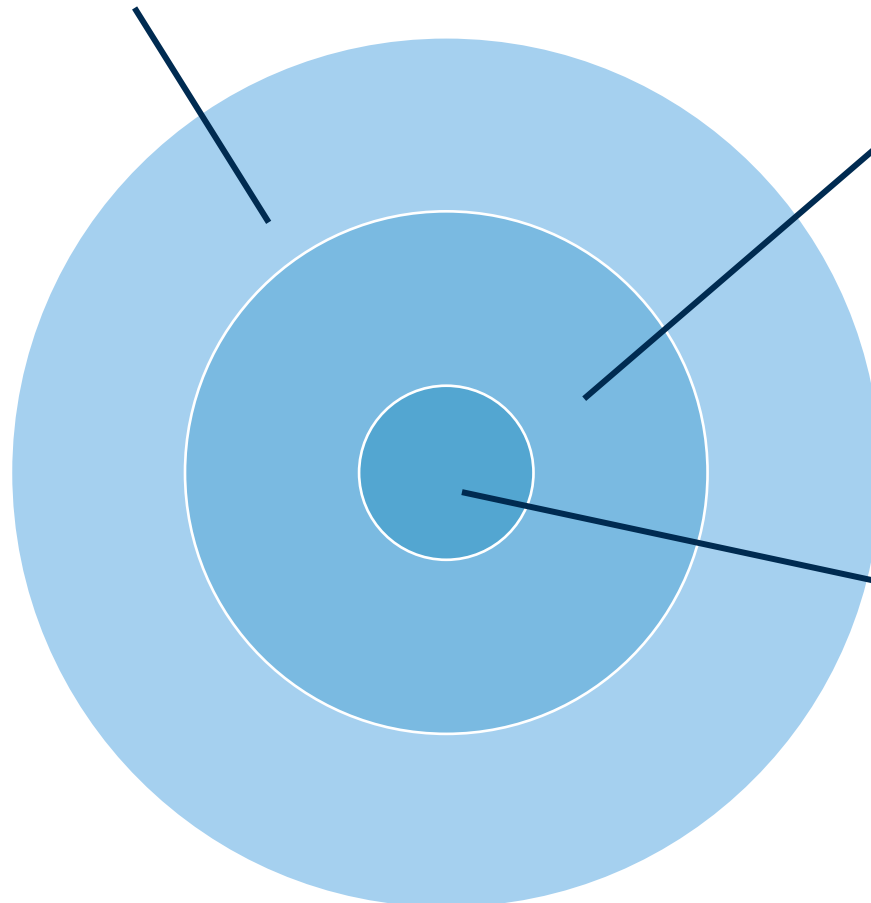
learnings

EDD Community of Practice

an important piece of a larger effort



Networks
connecting, and bolstering the capacity of,
economic development organizations



Communities of Practice
capturing, organizing, and scaling practices at a
national level

EDD Community of Practice
equipping Economic Development
Districts to achieve their economic
development goals

our invitation to you



engage



share



learn



implement

Importance of EDDs

EDDs are critical to EDA. . .and vital to regional economic development capacity building:

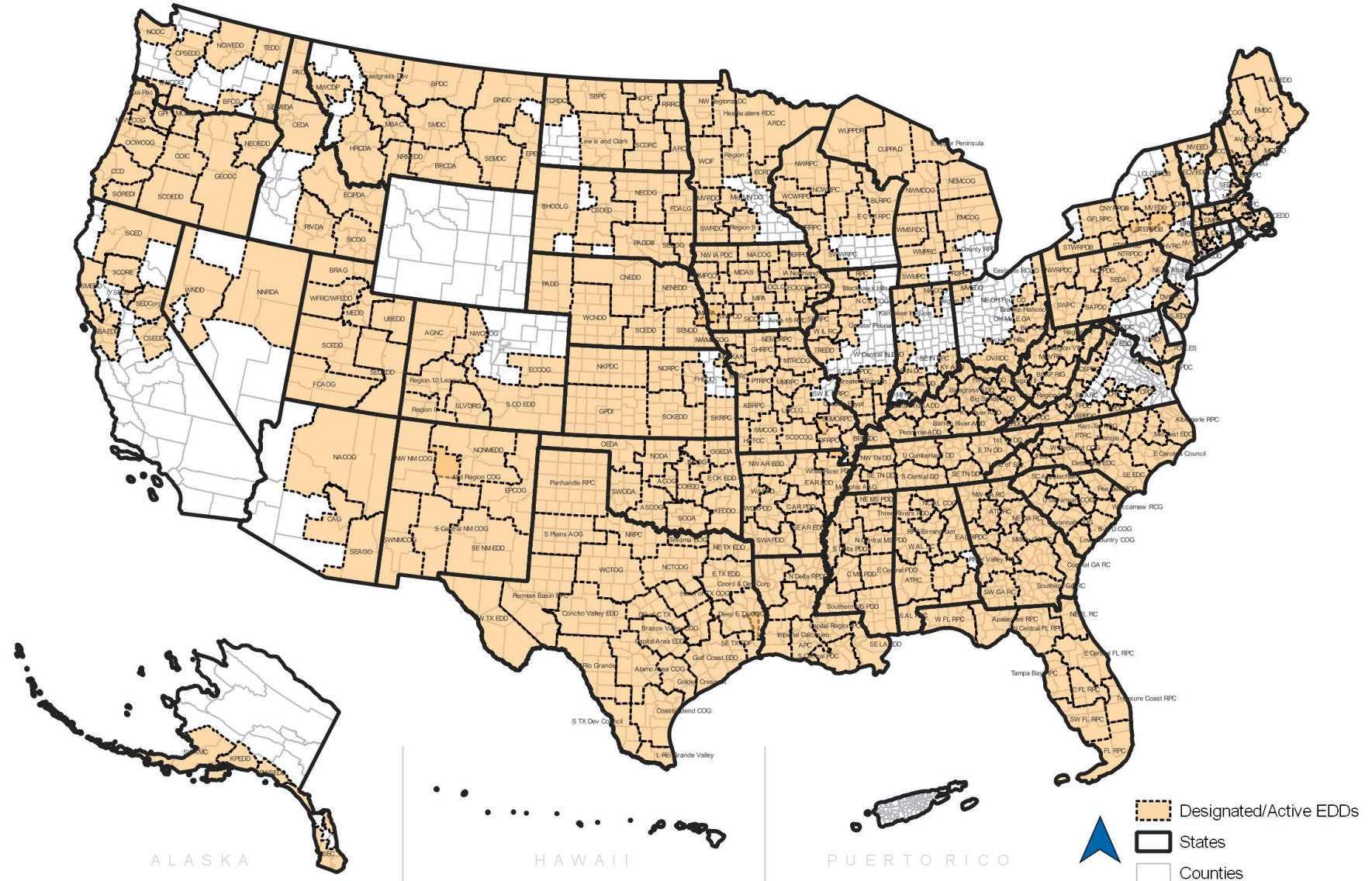
- “Institutional Partnerships” (program design, grantmaking, implementation, information-sharing/convening, etc.)
- Planning for public sector capacity building



Growth/Expansion of EDDs

By the Numbers:

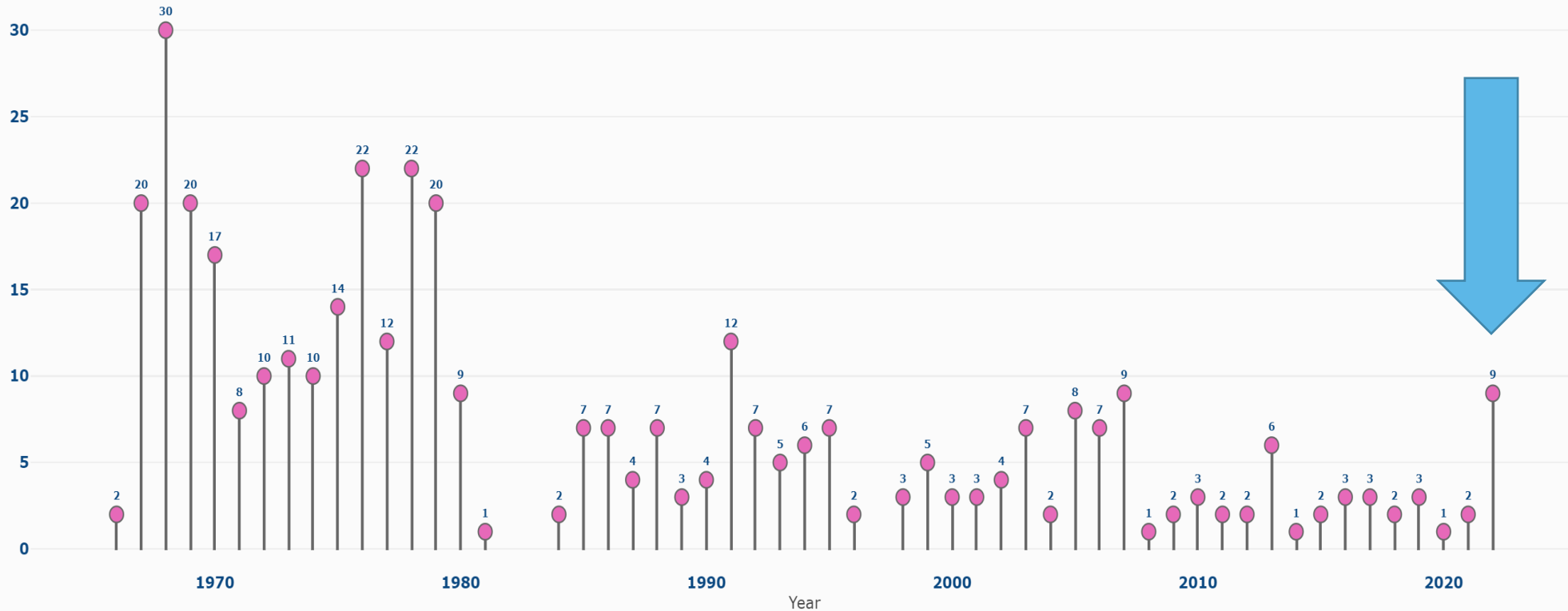
- **400**
designated/active EDDs
- **6**
cross-state EDDs
- **85%**
of counties covered by
an EDD



Growth/Expansion of EDDs (contd.)

EDD Designation by Year

● Economic Development Districts



By the Numbers:

- **12**
(approx.)
“regions” in
the EDD
designation
pipeline in
2023



Upcoming for the EDDs

1. EDD Community of Practice (CoP)
2. Budget update: *consistency and conversions*
3. New tools/resources:
 - **National Economic Resilience Data Explorer (NERDE)**
(<https://www.anl.gov/national-economic-resilience-data-explorer-nerde>)
 - **Economic Development Capacity Index (EDCI)**
(<https://www.anl.gov/dis/economic-development-capacity-index>)



CEDS Content Guidelines Updates

- New/updated sections of the CEDS Content Guidelines:
 - **Equity**
 - **Climate Resilience**
 - **Workforce Development**
 - **Broadband**
- Goal = more economic development implementation projects focused on bolstering these key areas
- As usual: heavy on “recommended resources” . . .and no “one-size-fits-all” approach
- Planned release = very soon



Questions?

Thank you & please reach out!

Dave Ives, Deputy Director, PRNTAD: dives@eda.gov

Brittany Sickler, Networks Program Manager: bsickler@eda.gov

Tori Brown, Communities of Practice Coordinator: vbrown1@eda.gov
networks@eda.gov

