

DIY Mobile Tour Southeast Portland and Portland Mercado



The [Portland Mercado](#) is “a community of more than 16 permanent businesses in our public market and Comcast Plaza and many more in our incubator kitchen - bringing together diverse cultures through food, art and entertainment.”

From its opening in April 2015, Portland Mercado has served as an incubator model and economic development initiative run by non-profit Hacienda CDC.

[Hacienda CDC](#) provides affordable space for businesses to launch and grow. Portland Mercado is a hub for Latino culture.

Experience the Mercado:

- Nine food carts (4 carts on Mondays & Tuesdays)
- Six indoor businesses
- Non-profit commercial kitchen



Mileage & Time

6 miles from Hilton Portland
20 minutes by taxi/rideshare
40 minutes by bus transit

Transit Options

TriMet Line 14 (Hawthorne)
Take to SE Foster and 72nd stop. Bus runs every 15 minutes.

Fare is \$2.50 for 2.5 hours or \$5 day pass.

Directions & Map

7238 Southeast Foster Road
Portland, OR, 97206

Please see back for map and transit details.

Mercado Hours of Operation

11 am—7:30 pm weeknights

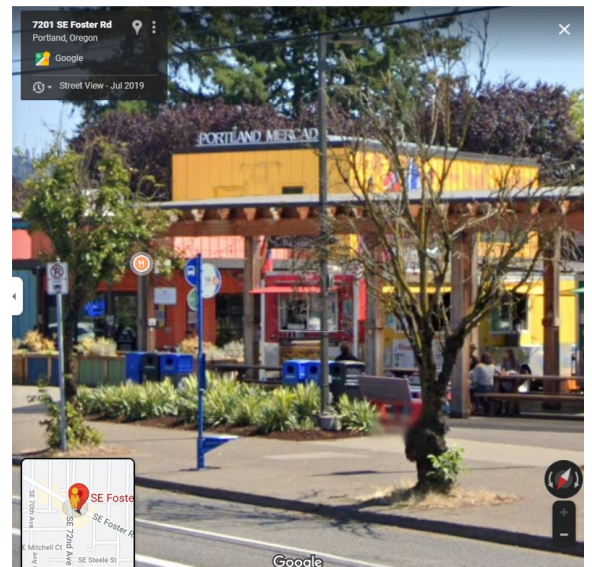
11am—8pm Friday & Saturday

*Times may vary by vendor.



**Transit Directions TriMet Bus Line 14 (Hawthorne)
38 minutes with buses running ~ every 15 minutes**

- From the **Hilton**, walk to the bus stop at SW Main Street and SW 6th Avenue near the Melting Pot restaurant. The stop is one block from hotel.
- Take the **#14 bus** toward Southeast Portland.
- The bus will cross the river and travel along SE Hawthorne Boulevard, turn onto SE 50th Avenue and SE Foster Road.
- Exit the bus at SE Foster Road and 72nd Street for the Portland Mercado.
- Return to the Hilton by bus #14 toward downtown Portland.



Mercado bus stop.