

# Lessons Learned in Economic Resilience Planning



**In the Houston-Galveston Region**











# Questions

- How well is the 13-county H-GAC Region positioned to withstand and prevent disruptions?
- What are the SWOT's at the regional and local level for the region's urban, suburban and rural areas?
- What are the current best practices in the region and elsewhere?
- What resources are available to assist communities?



# **Planning Process**

Economic Resilience Literature Review

Survey of Plans and Initiatives

Vulnerability Analysis

County-Level Workshops



# Economic Resilience Literature Review

## economic resilience

### *EDA definition*

Economic resilience is the ability to withstand and prevent disruptions to the economy.



# **Survey of Plans and Initiatives**

- Economic Development Strategic Plans
- Comprehensive Plans
- Hazard Mitigation Plans
- Capital Improvement Plans





# Vulnerability Analysis

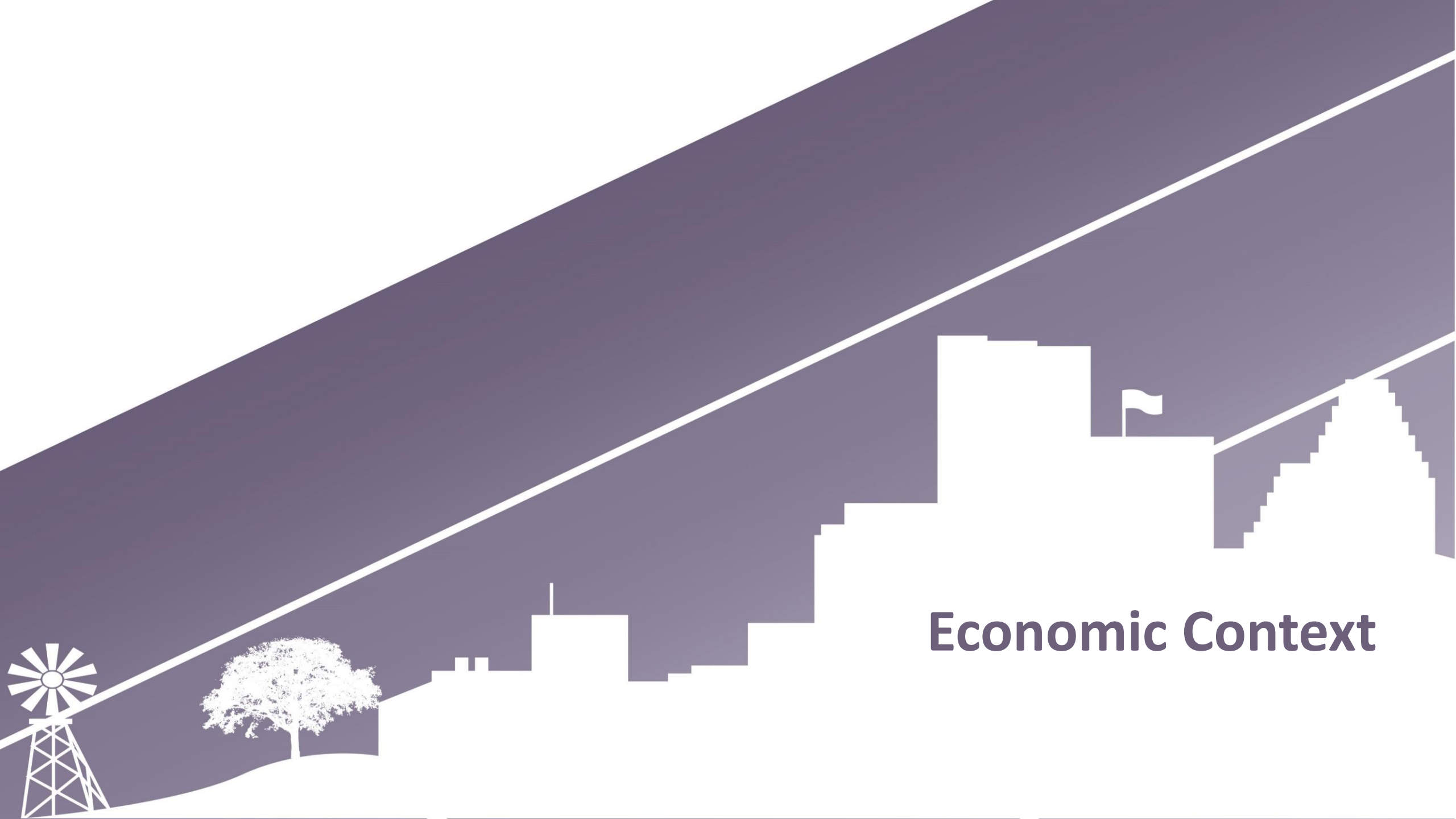
- Past Disasters
- Hazard Mitigation Plan Priorities
- Vulnerable Populations
- Growth/Land Use Forecasts



# County-Level Workshops

- Presented Socio-Economic Data
- Hazard Mitigation Plan Priorities
- Economic Development Goals/SWOT
- Areas for Collaboration





**Economic Context**

  
**ConocoPhillips**

  
**Marathon Oil**

 Enterprise Products  
Partners L.P.

 **PLAINS**  
ALL AMERICAN  
PIPELINE, L.P.

**HALLIBURTON**

**BAKER  
HUGHES**  
a GE company 

  
**NATIONAL  
OILWELL  
VARCO**

**Apache**

**KBR**

 **CenterPoint**  
**Energy**

**KINDER  MORGAN**

 **ENBRIDGE**

  
**CALPINE**  
NYSE:CPX

 **CAMERON**











# Plan Contents

- Big Ideas
- County Level Economic Resilience Profiles
- Case Studies
- Resources





## **KEEPING WATER WHERE IT BELONGS**



## **DEFENDING GREAT PLACES**



## **FUTURE PROOFING**





**KEEPING WATER WHERE IT BELONGS**

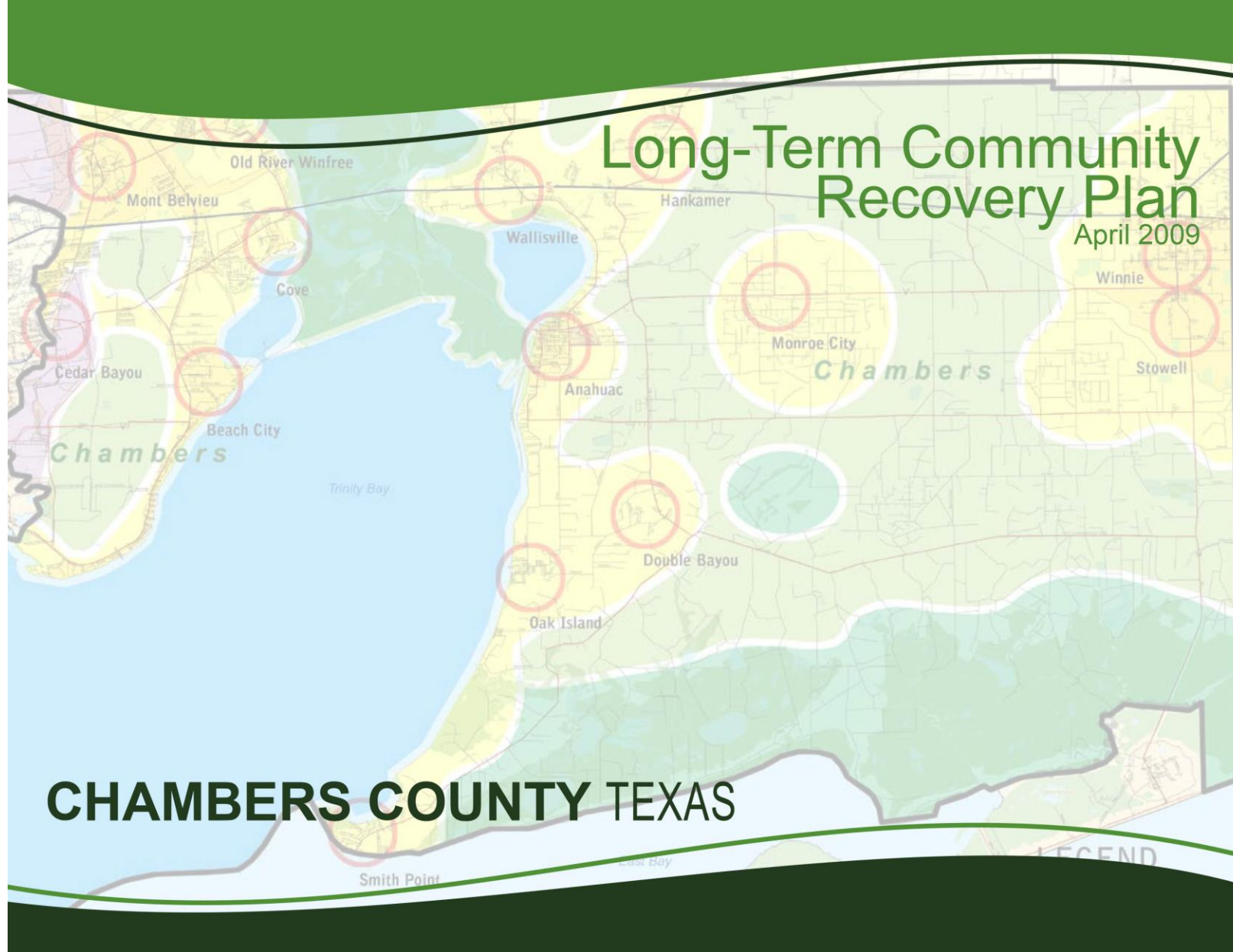






**KEEPING WATER WHERE IT BELONGS**





**KEEPING WATER WHERE IT BELONGS**







**KEEPING WATER WHERE IT BELONGS**







**DEFENDING GREAT PLACES**







**DEFENDING GREAT PLACES**







**DEFENDING GREAT PLACES**





# Plan Linkages

Improved vehicular access and circulation

Provision of public places and civic spaces

Improved local and regional mobility

Reinforcing a Main Street Environment

Enhanced community aesthetics

Housing choice offering affordable living options

Pedestrian-scaled and highly walkable development

Opportunities for community gathering

Effective transitioning to existing uses and neighborhoods



## DEFENDING GREAT PLACES







**FUTURE PROOFING**







**FUTURE PROOFING**





**FUTURE PROOFING**







**FUTURE PROOFING**



# LIBERTY COUNTY ECONOMIC RESILIENCE PROFILE

## Contents

Liberty County Overview .....	90
Recent Disruptions to the Economy .....	91
Economic Resilience Strategies .....	91
Recommendations .....	91
Land Use and Demographics .....	92
Housing .....	94
Economy .....	95
Education, Hazard Risks, and Commute .....	96
Economic Clusters .....	98
Local Planning .....	99
Data Sources .....	100

## Introduction

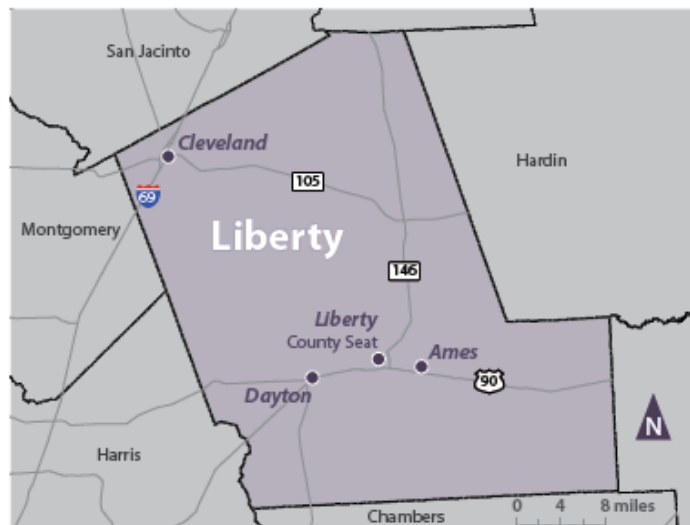
Economic resilience is the ability to withstand and prevent disruptions to the economy. The most common types of disruptions include downturns in the economy or in a key industry; the exit of a major employer; and natural or man made disasters.

Creating a resilient economy requires the ability to anticipate risk, evaluate how risk can impact economic assets, and build the capacity to respond to disruptions.

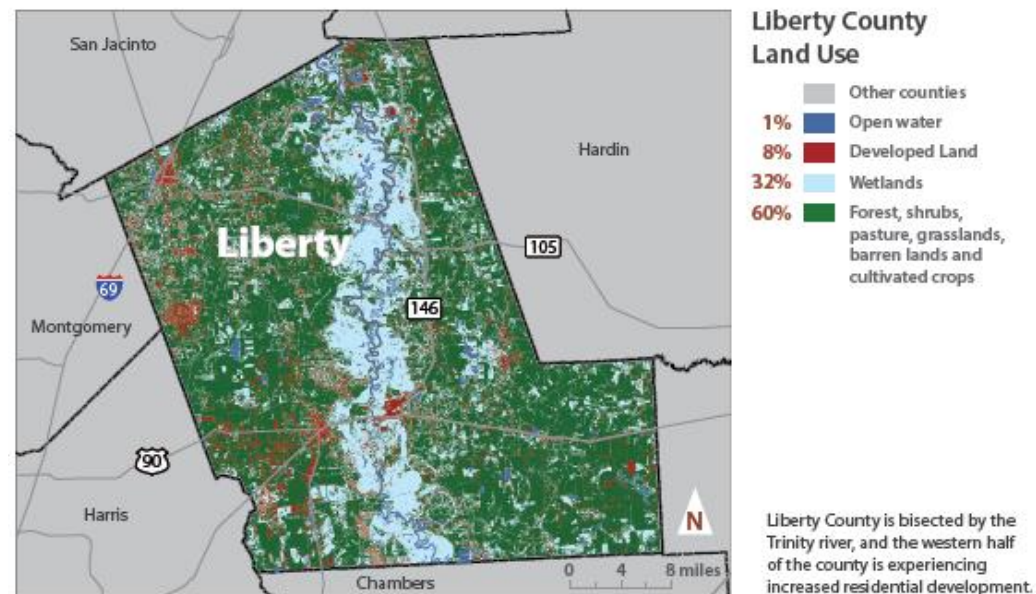
This profile is intended to provide an overview of the factors affecting the future growth, development and resilience of Liberty County and it's economy by providing key data points on the economy, demographics, and other useful information.

## Liberty County Boundaries

- Liberty County
- Other counties
- Top 4 cities
- Major roads
- County Seat: Liberty
- Largest City: Liberty

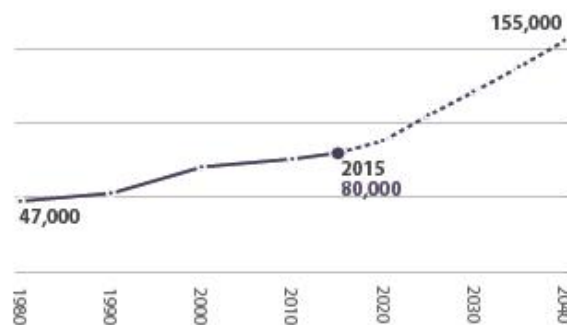


## Land Use and Demographics



## Population Growth Forecast

Liberty County grew by 69% from 1980 to 2015 and is expected to reach 155,000 residents by 2040.



## Municipal Populations

The City of Liberty is Liberty County's largest incorporated municipality.

9,175	Liberty
8,095	Cleveland*
7,734	Dayton
1,093	Ames
1,054	Daisetta
885	Hardin
654	Plum Grove
615	Kenefick
486	Devers
267	North Cleveland
157	Old River-Winfree*
100	Dayton Lakes
51,389	Unincorporated

\*The municipality spans multiple counties. Only the population residing in Liberty County is shown here.





# Leadership in Times of **CRISIS**

**A Toolkit for Economic Recovery and Resiliency**

**RESOURCES**





## USDA Rural Development: Summary of Major Programs

Download for more details  
on the resources available in  
Florida!

[Download](#)

### News & Resources

INVOLUCRANDO  
EMPRESAS  
PEQUEÑAS EN  
PREPARACIÓN  
PARA  
DESASTRES

#### New brochure in Spanish! ¡Nuevo folleto en español!

¿Por qué involucrar empresas pequeñas en continuidad comercial? Empresas pequeñas tiene una función crítica en la economía local porque proveen servicios y productos necesarios a ambos residentes y grandes empleadores. Después ...[\[more\]](#)

### Welcome

RestoreYourEconomy.org provides resources and best practice information for public and private stakeholders who are seeking to rebuild their local economies after an economic disruption, be it a natural disaster or man-made crisis, as well as assisting the business



# Questions

Joshua Owens

Wharton Economic Development Corporation

[execdirector@whartonedc.com](mailto:execdirector@whartonedc.com)

Cheryl Mergo

Houston-Galveston Area Council

[Cheryl.Mergo@h-gac.com](mailto:Cheryl.Mergo@h-gac.com)

