

2019 NORTH CENTRAL OVERVIEW



WHO WE ARE

For over 50 years, the North Central Pennsylvania Regional Planning and Development Commission has been a significant regional resource and a partner for progress. Our job is to maximize North Central's contribution to the region's economy and quality of life. North Central is a multi-faceted regional resource that employs a talented and committed staff to navigate complex state and federal programs. These programs generate considerable benefit to the area's community and economic development, human services, infrastructure and information technology. Our organization indeed has much to offer this great region.

WHAT WE DO

North Central serves as a forum through which local businesses and communities work cooperatively to improve our region. This spirit of coordination and service was fundamental to our establishment in 1967 and continues to be our guide today.

- ❖ We are the local contact for many state and federal programs
- ❖ We guide diverse activities and efforts into coordinated channels
- ❖ We write comprehensive development plans based on what we have experienced and gained knowledge of, and what we learn through studies of physical, social, and economic conditions
- ❖ We identify trends in the region and act upon opportunities to promote the general health and welfare of our residents
- ❖ We serve as a forum for the discussion and study of shared challenges and problems

Our organization is structured around the following four divisions: Community Development/Regional Planning; Economic Development; Women, Infant & Children; and Information Technology/Rural Broadband.

VISION

"North Central will be recognized and respected as a premier regional development organization by providing first class services to its customers."

OUR MISSION

"North Central will exceed the expectations of its customers and stakeholders by committing to organizational excellence, helping to build vibrant communities, aiding in the preparation of a first-class workforce, stimulating economic vitality through intergovernmental collaboration, and partnering to build the infrastructure and technology necessary for regional growth."

VALUE STATEMENT

"North Central will act with integrity, openness, respect and honesty in all relationships, dealings and transactions and will strive to earn and convey trust through these values. North Central will keep faith with the public trust through efficient cost effectiveness and stewardship of resources."

CORE VALUES

Professional Trust and Respect

Innovation, Adaptability and Leadership

Service and Stewardship

Accountability and Commitment

Partnering and Teamwork

Future Focus

PROGRAMS & SERVICES



BUSINESS DEVELOPMENT

Government Contracting
Export Marketing Assistance
Business Finance Assistance
Brownfield Revitalization
Keystone Opportunity Zones
Foreign Trade Zone 254
WEDnetPA
Regional Coordinator for:
Partnership for Economic Performance (PREP)
Engage! Business Calling Program

COMMUNITY DEVELOPMENT

Appalachian Regional Commission
Economic Development Administration
Public Infrastructure
Greenways Planning
Flood Resiliency
Municipal Technical Assistance Program (MTAP)
Local Project Development and Delivery

TRANSPORTATION PLANNING

Rural Planning Organization (RPO)
Long Range Transportation Plan
Transportation Improvement Program
Public Participation Plan (PPP)
Transportation Alternatives
Bicycle and Pedestrian Planning
Freight Planning
Coordinated Public Transit-Human Services Transportation Plan

Local Technical Assistance Program (LTAP)

REGIONAL STRATEGIC PLANS

Comprehensive Economic Development Strategies (CEDS)

MAPPING & DATA

Asset Inventories
Data Analysis
GIS Services
U.S. Census Data

RURAL BROADBAND

Internet Service Provider
Wireless Networking
Vertical Assets Studies

WOMEN, INFANT & CHILDREN

Nutritional Counseling
Health Screenings

2019 NORTH CENTRAL FAQ



The North Central Pennsylvania Regional Planning and Development Commission is designated by the Appalachian Regional Commission (ARC) as the Local Development District (LDD) and by the U.S. Department of Commerce, Economic Development Administration (EDA) as the Economic Development District (EDD) for North Central Pennsylvania. North Central plays a lead role in identifying priority needs of local communities by working to foster community and economic development, to target and meet the most pressing needs, and to build community cohesion and leadership.

WHAT IS A LOCAL DEVELOPMENT DISTRICT?

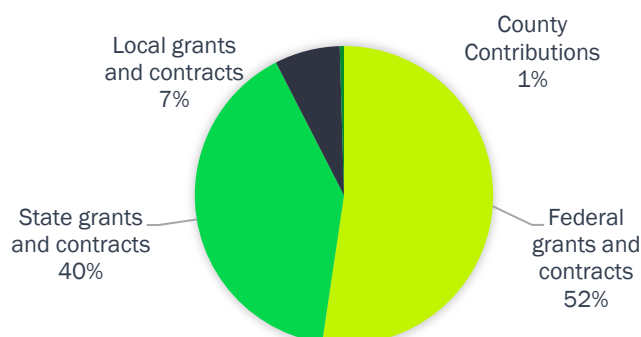
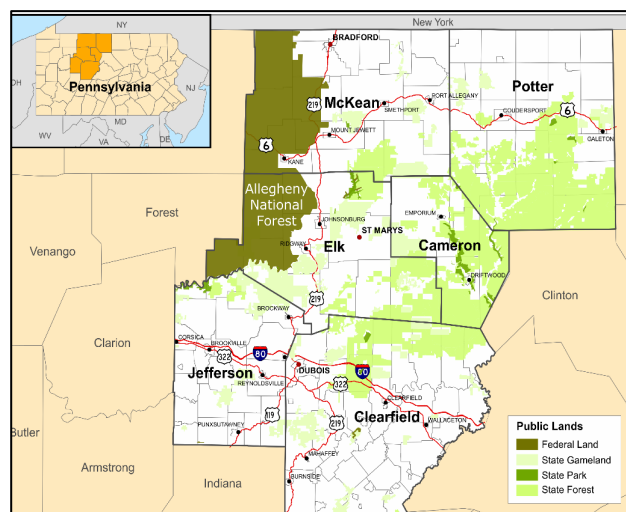
LDDs help public and private sector leaders develop and implement programs and services that build strong, regional economies and communities. LDDs are cost-effective, efficient, and focused on leveraging resources to meet the region's needs. They provide comprehensive regional strategies for community and economic development, and raise awareness of regional needs by engaging policymakers at the state and federal level.

WHAT IS THE NORTH CENTRAL REGION?

We serve six counties in North Central Pennsylvania, including Cameron, Clearfield, Elk, Jefferson, McKean and Potter. That being the case, we have strong partnerships with regional entities across Pennsylvania and the U.S. to ensure our staff are primed in best practice and that our counties receive maximum representation.

HOW IS NORTH CENTRAL FUNDED?

Through a variety of state and federal grants in addition to local contributions paid from the six-county region we serve, North Central is able to maintain operations from our home base of Ridgway, PA.





'PARTNERING FOR REGIONAL OPPORTUNITIES'

NORTH CENTRAL PENNSYLVANIA REGIONAL PLANNING & DEVELOPMENT COMMISSION

www.ncentral.com

2018 - 2019 REGIONAL IMPACTS

Business
Development

Community
Development

Transportation
Planning

Rural
Broadband

Regional
Strategic Plans

Women, Infants
& Children

Square Miles
5,083 / 11%
PA @ 46,055

Population
215,280 / 1.7%
PA @ 12,807,060



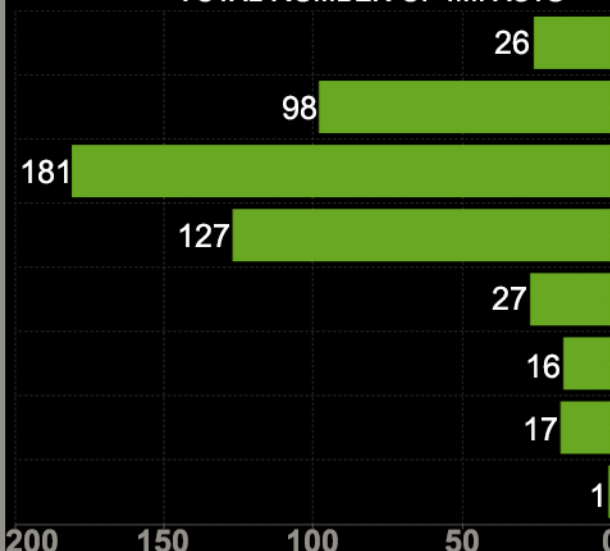
Median Income
\$44,680
PA @ \$56,951

Per Capita Income
\$24,440
PA @ \$31,476

#493 IMPACTS
MADE

\$32 MILLION
INVESTED

TOTAL NUMBER OF IMPACTS



CAMERON

CLEARFIELD

ELK

JEFFERSON

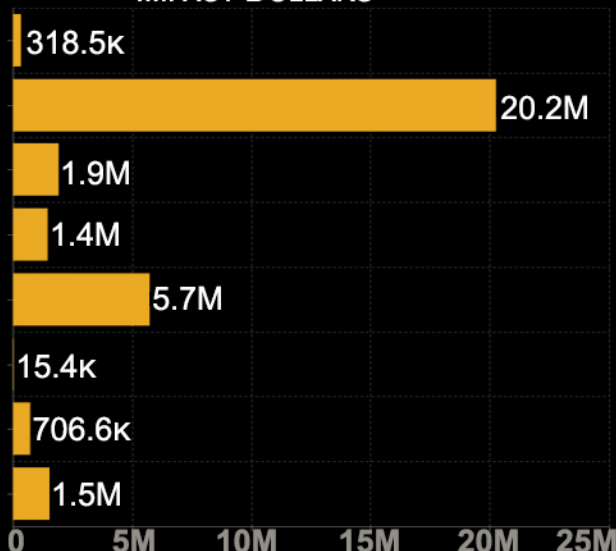
MCKEAN

OTHER

POTTER

REGIONAL

IMPACT DOLLARS



JOBS CREATED
#288

JOBS RETAINED
#1,747

CLIENTS SERVED
#13,515

PUBLIC FINANCING
LEVERAGED
\$26.3 MILLION

PRIVATE FINANCING
LEVERAGED
\$5.5 MILLION

HIGHWAY & BRIDGE CONSTRUCTION PROJECTS

#46 PROJECTS
COMPLETED

\$105+ MILLION
INVESTED

CAMERON: 3 / \$6,817,265
CLEARFIELD: 13 / \$26,098,578
ELK: 5 / \$16,187,157

JEFFERSON: 11 / \$31,587,828
MCKEAN: 9 / \$15,783,987
POTTER: 5 / \$8,781,464



49 RIDGMONT DRIVE, RIDGWAY, PA 15853

814.773.3162