



# Lifting Up Communities through Economic Diversification

March 18, 2019  
NADO-DDAA Washington Conference



A wide-angle photograph of a sunset over a large body of water. The sky is filled with dark, heavy clouds that are illuminated from below by the setting sun, creating a vibrant orange and yellow glow. The sun itself is a bright, horizontal band of light just above the horizon. The water in the foreground is dark with small, shimmering ripples. In the distance, a city skyline is visible along the horizon, with several buildings and palm trees silhouetted against the bright sky. The overall mood is serene yet powerful, suggesting resilience and the beauty of nature's cycles.

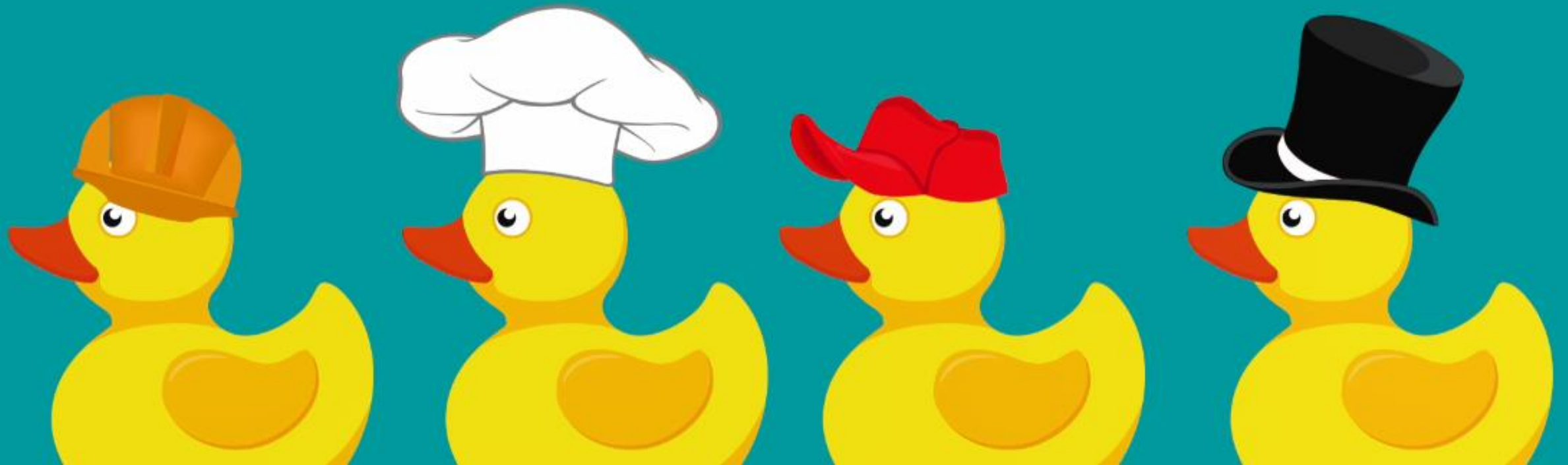
# Resilience:

The ability of a region or community to anticipate, withstand, and bounce back from shocks and disruptions, including:

- ☐ Natural disasters or hazards
- ☐ Climate change impacts
- ☐ The closure of a large employer
- ☐ The decline of an important industry
- ☐ Changes in the workforce



# A DIVERSIFIED ECONOMY







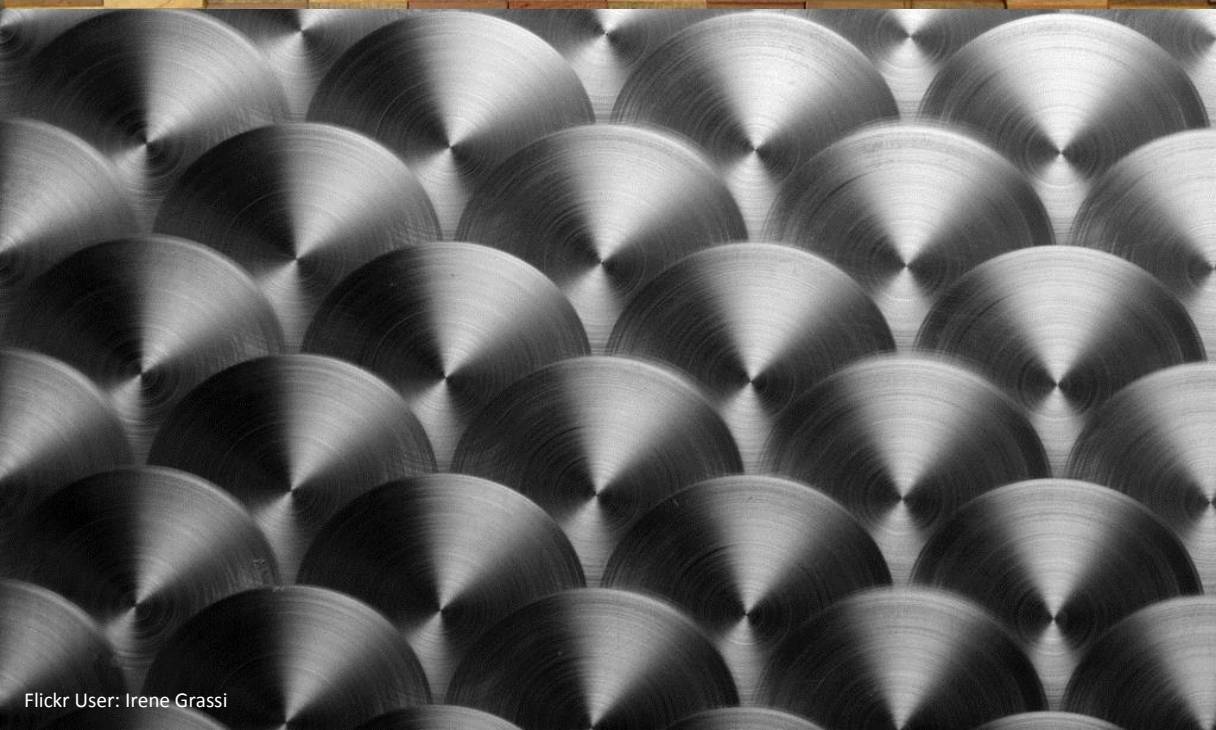




Flickr User: Syahmir



Flickr User: Dave Gingrich



Flickr User: Irene Grassi



Flickr User: Aaron Rosenberg



# Diversification...Even Cupertino, CA is doing it!



# The Panel

- **Travis Kyhl**  
Deputy Executive Director, Six County Association of Governments (UT)
- **Jason Jolley**  
Associate Professor of Rural Economic Development and MPA Director,  
Voinovich School of Leadership and Public Affairs, Ohio University
- **Stephanie Bertaina**  
Senior Policy Analyst, US Environmental Protection Agency
- **Doug Lynott**  
Director, Economic Development Integration, US Department of  
Commerce Economic Development Administration
- **Brett Schwartz**, Associate Director, NADO Research Foundation

