

THE  
**MARTINSBURG**  
INITIATIVE

A Model Solution to a National Problem

**Chief Maury Richards, Ed.D.**  
*Martinsburg Police Department*



# *The Martinsburg Initiative*

An innovative partnership between the Martinsburg Police Department, Berkeley County Schools, Shepherd University, Washington/Baltimore HIDTA, Boys & Girls Club of the Eastern Panhandle, and community to assess, identify, and eliminate basic causes of drug abuse.

Founded upon a school-centered, family-based approach and applying the science of the Adverse Childhood Experiences (ACE) study, *The Martinsburg Initiative* builds strong families and empowers communities.



# The Martinsburg Initiative Partners

- Martinsburg Police Department
- Berkeley County Schools
- Shepherd University
- Washington/Baltimore HIDTA
- Boys & Girls Club
- United Way
- Shenandoah Women's Center
- Berkeley County Ministerial Association





*Washington/Baltimore*



*HIGH INTENSITY DRUG TRAFFICKING AREA*



**BOYS & GIRLS CLUB**  
OF THE  
EASTERN PANHANDLE

**United  
Way**



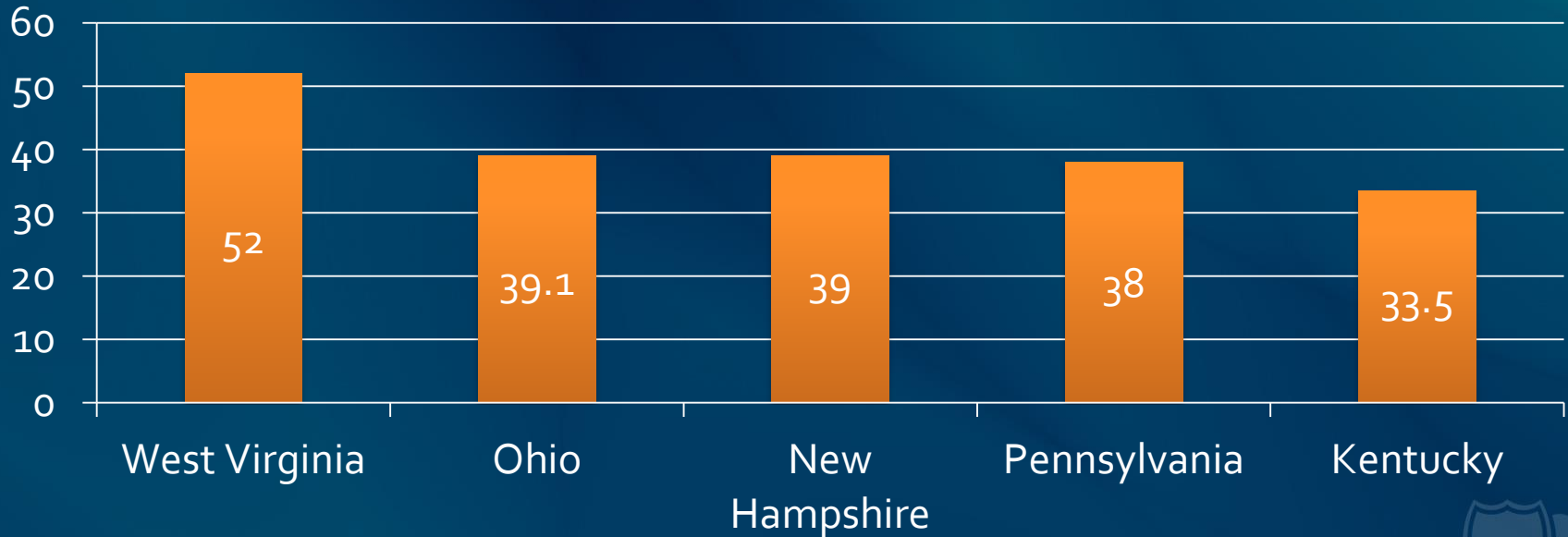
**United Way**  
of the Eastern Panhandle, Inc.

**B**ERKELEY  
**C**OUNTY  
**M**INISTERIAL  
**A**SSOCIATION



# 2016 Overdose Deaths Per 100,000 Population

## Top 5 States



# Unsustainable Costs

Prescription  
Opioid Abuse

**\$79 billion**

Heroin

**\$27 billion**

All Illicit  
Drugs

**\$280 billion**

Total  
Substance  
Abuse

**\$740 billion**

Sources: National Institute on Drug Abuse, Centers for Disease Control, & Rand Corporation.



# ENFORCEMENT TREATMENT PREVENTION

*"We can't arrest our way out of the problem."*



# First Time Opioid Abusers—2015

Misuse of Prescription  
Pain Pills

**2.1 million**

Heroin

**212,000**





# Adverse Childhood Experiences

## ABUSE



Physical



Emotional



Sexual

## NEGLECT



Physical



Emotional

## HOUSEHOLD DYSFUNCTION



Mental Illness



Mother treated violently



Divorce



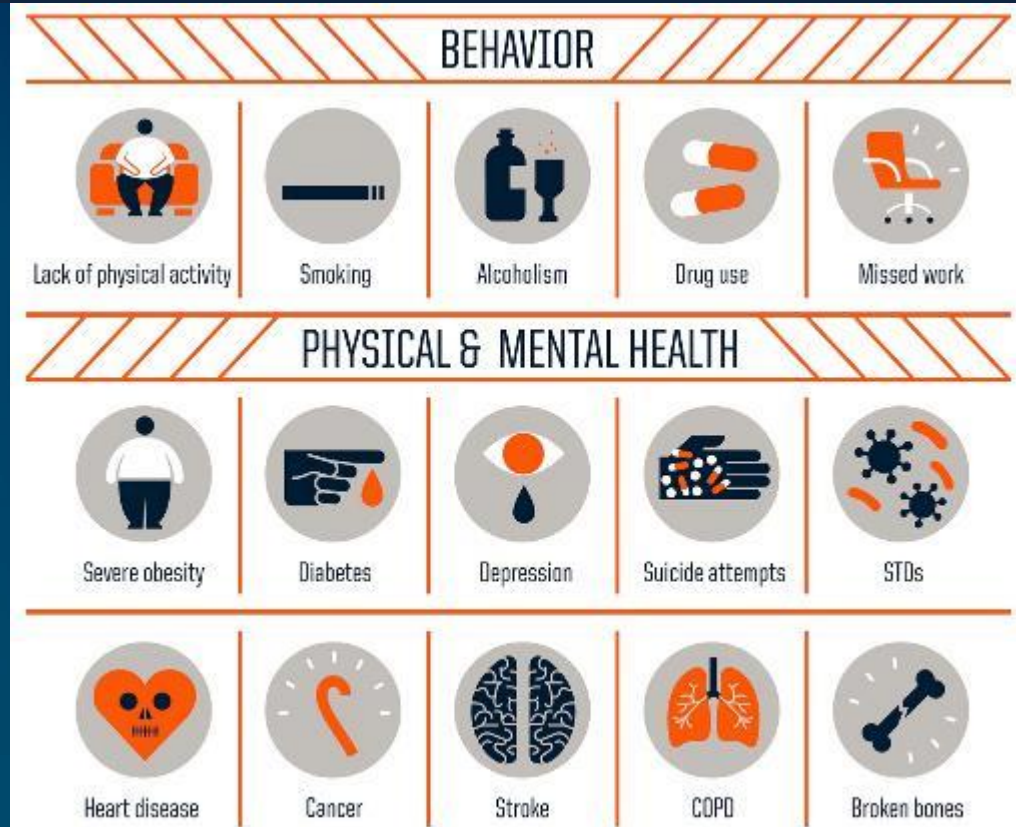
Incarcerated Relative



Substance Abuse



# Increased Health Risks Linked to ACEs



Source: cdc.gov



“A child with

**6 ACEs = 4,600% more likely**

to be an intravenous drug user...”



# A **Police, School,** and **Community**-Based Approach...

*...Mentors, Boys & Girls Club, and "Adopt a Classroom."*





# Moving Beyond Traditional Policies



- December 2017—\$135,000 Federal Grant
- University of Baltimore—Center for Drug Policy and Enforcement
- 1 of 13 National Community-level Initiatives
- TMI Goes Citywide—8 Schools
- Project Director—Tiffany Hendershot





# Measuring *TMI* Success

## *The Shepherd University Partnership*

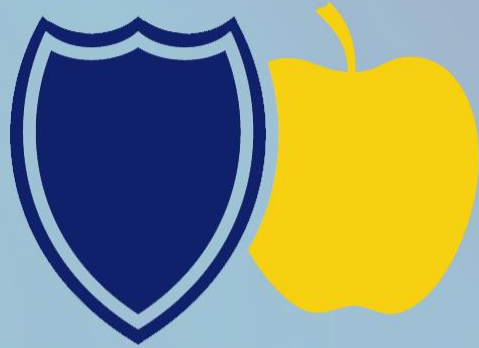
### Study...

- Expected performance outcomes
- Assessment measures

### ...and Participation...

- Interns
- Mentors
- Volunteers





THE  
**MARTINSBURG**  
INITIATIVE

A Model Solution to a National Problem

**Chief Maury Richards, Ed.D.**  
*Martinsburg Police Department*

