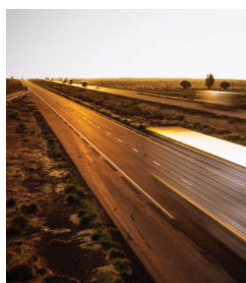


Recent Publications from the National Association of Development Organizations Research Foundation

The National Association of Development Organizations (NADO) provides advocacy, education, research, and training for the nation's regional planning and development organizations. The association and its members promote regional strategies, partnerships, and solutions to strengthen the economic competitiveness and quality of life across America's local communities. The NADO Research Foundation provides professional development training, research, and peer networking services for NADO members and other practitioners. Learn more about our work and download copies of these recent publications and more on our website, at www.nado.org/category/resources/publications.

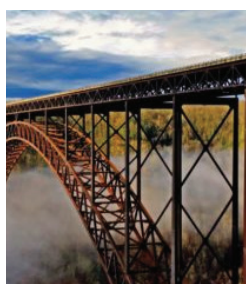


Regional Transportation Planning Organization Peer Exchange Summary (2017)

The peer exchange was attended by a small group of regional transportation planners and state Department of Transportation planning staff in September 2016. The summary document includes discussion of practice on several topics, including: rural mobility challenges, aligning transportation with economic development, rural public involvement, opportunities to increase economic development by having a safe transportation system, and connecting to transportation safety. Available at www.nado.org/rtpo-peer-exchange-summary.

Stronger CEDS, Stronger Regions: Resource Archive (2017)

With the support of the US Economic Development Administration (EDA), the NADO Research Foundation has launched "Stronger CEDS, Stronger Regions." This program will expand resources available on the Comprehensive Economic Development Strategy (CEDS), provide trainings and technical assistance to Economic Development Districts and other partners, and amplify EDA's message about the tremendous value and potential of the CEDS to support broader regional economic and community development goals. Available at www.nado.org/stronger-ceds-stronger-regions-resource-archive-2.



Newsletter Archive: "Building Stronger Economies in Appalachian Coal Country" (2016 – 2017)

This newsletter contains information about economic diversification, funding opportunities, and upcoming events to improve economic development, infrastructure, and quality of life in the region. Available at www.nado.org/newsletter-archive-building-stronger-economies-in-appalachian-coal-country.

Measuring Rural Wealth Creation: A Guide for Regional Development Organizations (2016)

Rural wealth creation is a demand-driven approach, focusing on market opportunities that capitalize on a community's assets. Wealth creation takes an intentionally inclusive approach by increasing jobs and incomes of low-income people and local ownership and control of assets. Available at www.nado.org/measuring-rural-wealth-creation-a-guide-for-regional-development-organizations.





Regional Wealth Creation Case Studies (2016)

These case studies feature three regions building multiple forms of wealth, rooting economies in place with local ownership and control of assets, and intentionally including people at the margins of the economy as beneficiaries of economic development work. Case studies from Maine, Alabama, and Minnesota cover asset-based development related to timber, arts, and local foods. Available at www.nado.org/regional-wealth-creation-case-studies.

Regional Rural Transportation Planning: State Models for Local Consultation, Regional Coordination, and Regional Transportation Planning Organizations (2016)

This report presents information on the structures, membership, tasks, and funding for regional organizations conducting rural transportation planning work in over 30 states. This research represents a comprehensive look at regional transportation planning organizations and similar entities around the nation. Available at www.nado.org/17573-2.

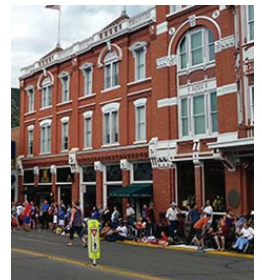


Planning for Transportation Together: Collaborating to Address Transportation and Economic Resilience (2016)

Across the nation, state agencies and regional planning and development organizations are working together and with other partners to create jobs, improve access to employment, education, and essential services, and to advance quality of life in communities and regions. Available at www.nado.org/planning-for-transportation-together-collaborating-to-address-transportation-and-economic-resilience.

Advancing Collaborative Planning: Summary of a Focus Group on Transportation and Economic Development (2016)

In March 2016, the NADO Research Foundation held a focus group on the link between transportation and economic development, and how state departments of transportation and regional planning and development organizations can work together to better plan for those issues in an integrated way. Available at www.nado.org/advancing-collaborative-planning-focus-group.



Planning for a More Resilient Future: A Guide to Regional Approaches (2015)

This report covers the body of research on resilience, describing the main ideas that are driving policy and practice across the country and examining current thinking on regional and economic resilience. It is intended for regional development organizations as well as local governments, community foundations, voluntary organizations, and others who serve communities impacted by, or at risk of being impacted by, disasters. Available at www.nado.org/planning-for-a-more-resilient-future-a-guide-to-regional-approaches.

Planning for Prosperity in Small Towns and Rural Regions (2015)

This website is home to capacity building materials developed by the NADO Research Foundation and its partners. It contains links to publications, webinars, workshop materials, and other information on community and economic development in small towns and rural regions. Available at www.nado.org/online-resource-planning-for-prosperity-in-small-towns-and-rural-regions.

