

Flood Resilience & Recovery: Actions in Vermont's Mad River Valley



Joshua Schwartz
Executive Director
Mad River Valley Planning District



Burlington

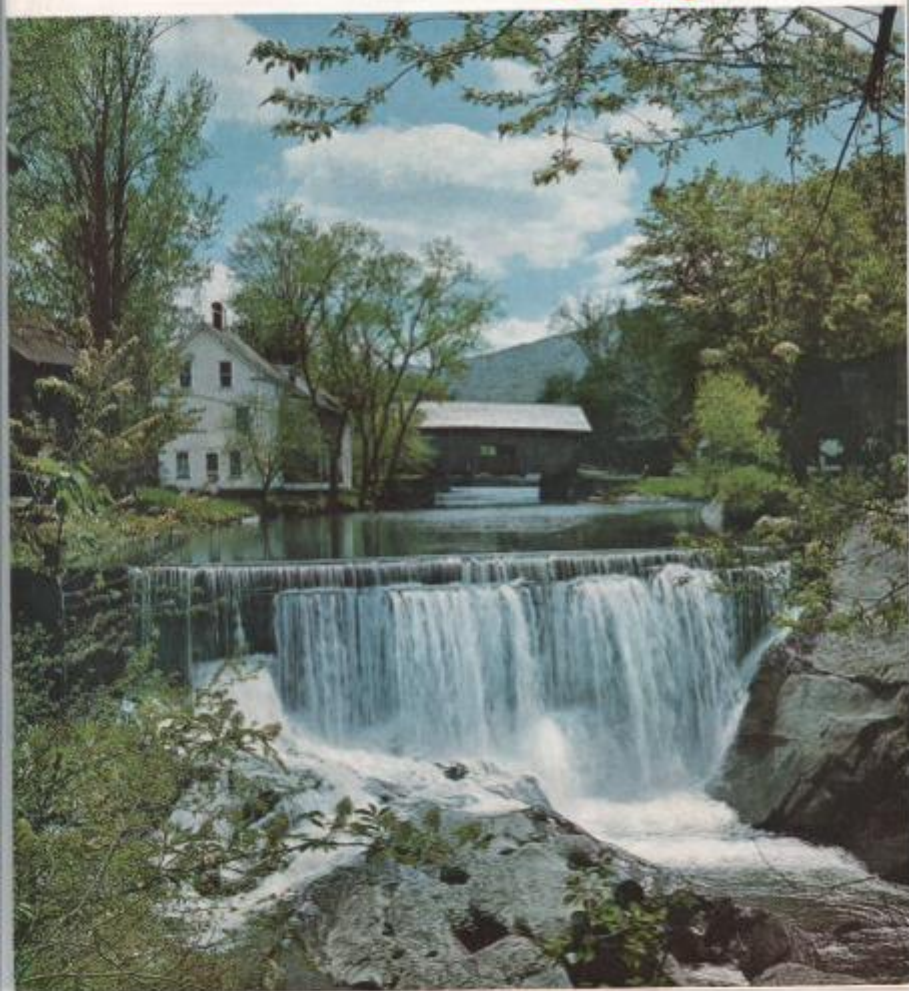
Montpelier

**Mad River
Valley**

VERMONT *Life*

VOLUME XIV • NUMBER 3 • 50 CENTS

SPRING 1960







Green Hill, Tenn. Cata. & Brook Photo Studio Flooded. Photo: Jeff King

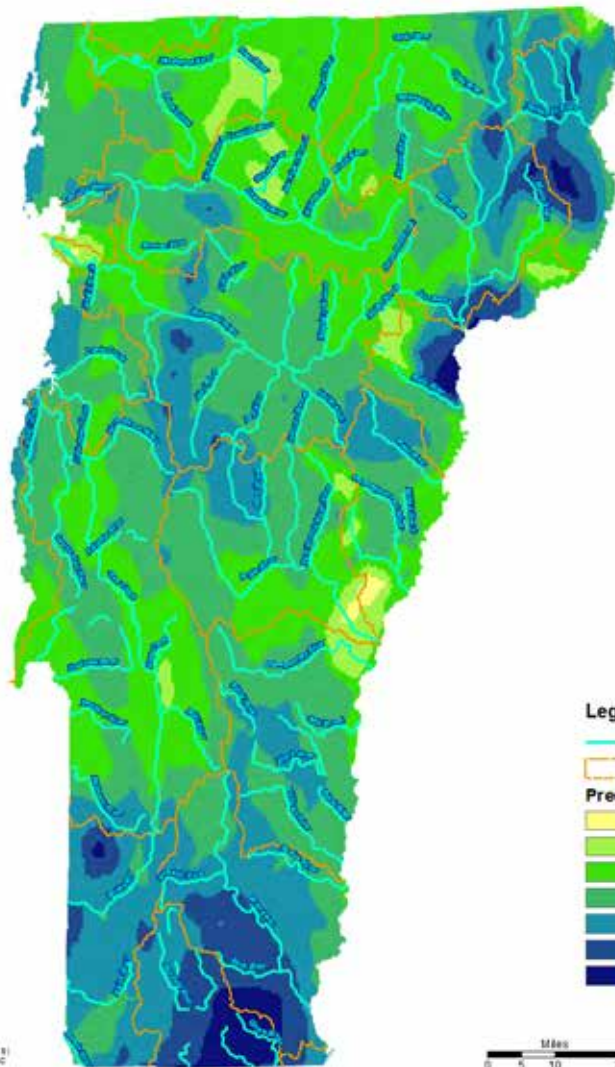


Above: about 3:30 pm. Below: water level around 530pm



FEMA-4022-DR-VT TROPICAL STORM IRENE

Total Rainfall in Inches 27 August - 1 September 2011



Legend

Flowlines

HUC 8 Boundaries

Precipitation in Inches

2.250 - 2.512

2.512 - 3.316

3.316 - 4.143

4.143 - 4.947

4.947 - 5.752

5.752 - 6.579

6.579 - 7.797

SOURCE - NATIONAL WEATHER SERVICE (NWS) ADVANCED HYDROLOGIC AND CLIMATOLOGY SERVICE GRIDDED RAINFALL DATA









Exploring pathways to transformations in post-disaster-event communities

A case study on the Mad River Valley, Vermont, USA



Vermont Downtown Action Team Report
 August 1, 2014 **Waitsfield, Vermont**

Hill Farming in the Mad River Valley
 A 2013 Research Project for the
 Mad River Valley Planning District



Disaster Recovery and Long-Term Resilience Planning in Vermont
 U.S. EPA Smart Growth Implementation Assistance Project
 Policy Memo for the Mad River Valley
 August 2013

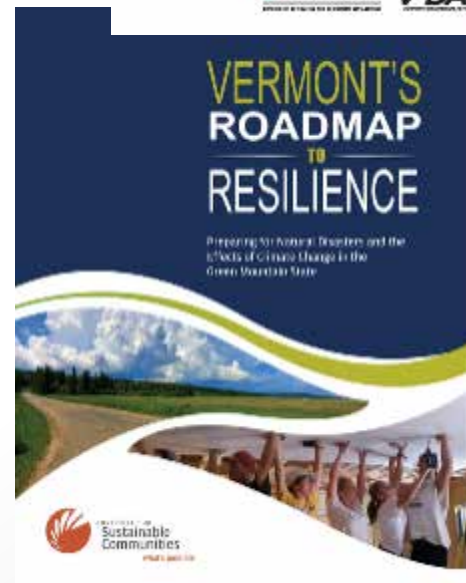
ey
 in Valley a hill farm. This
 produced by M&J

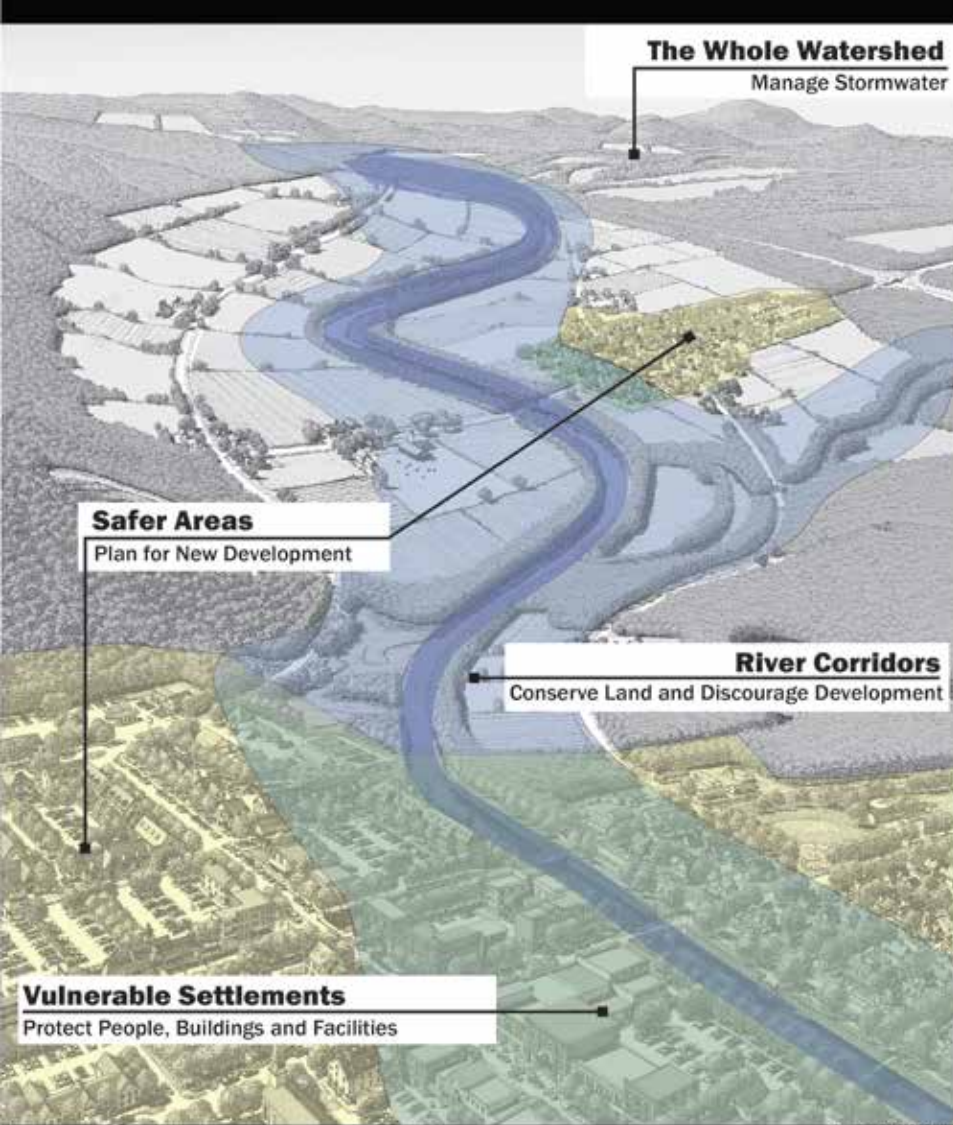


Credits: (Top) Richard Aronov, Courtesy of the State of Vermont; (Bottom) Lori George & Meredith Heldt/Right
 Caption (Clockwise from Top Left): Downtown Waitsfield, Vermont; Montserrat Town Hall; Flood damage in Waitsfield, Vermont from Tropical Storm Irene.



Vermont Downtown Action Team Report
 August 1, 2014 **Warren, Vermont**

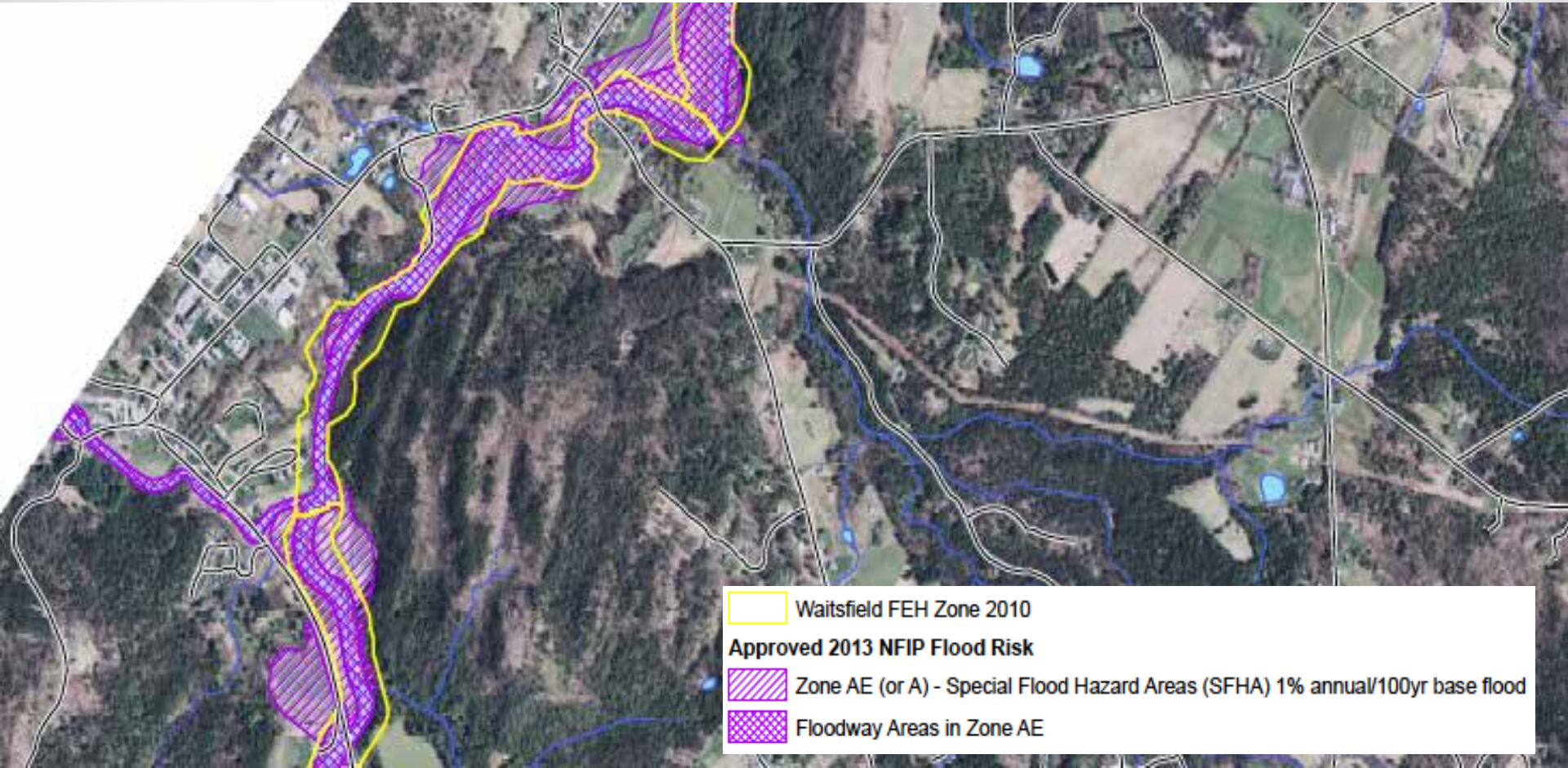




Planning for Flood Recovery & Long-Term Resilience in Vermont: Smart Growth Approaches for Disaster-Resilient Communities
www.epa.gov/smartgrowth



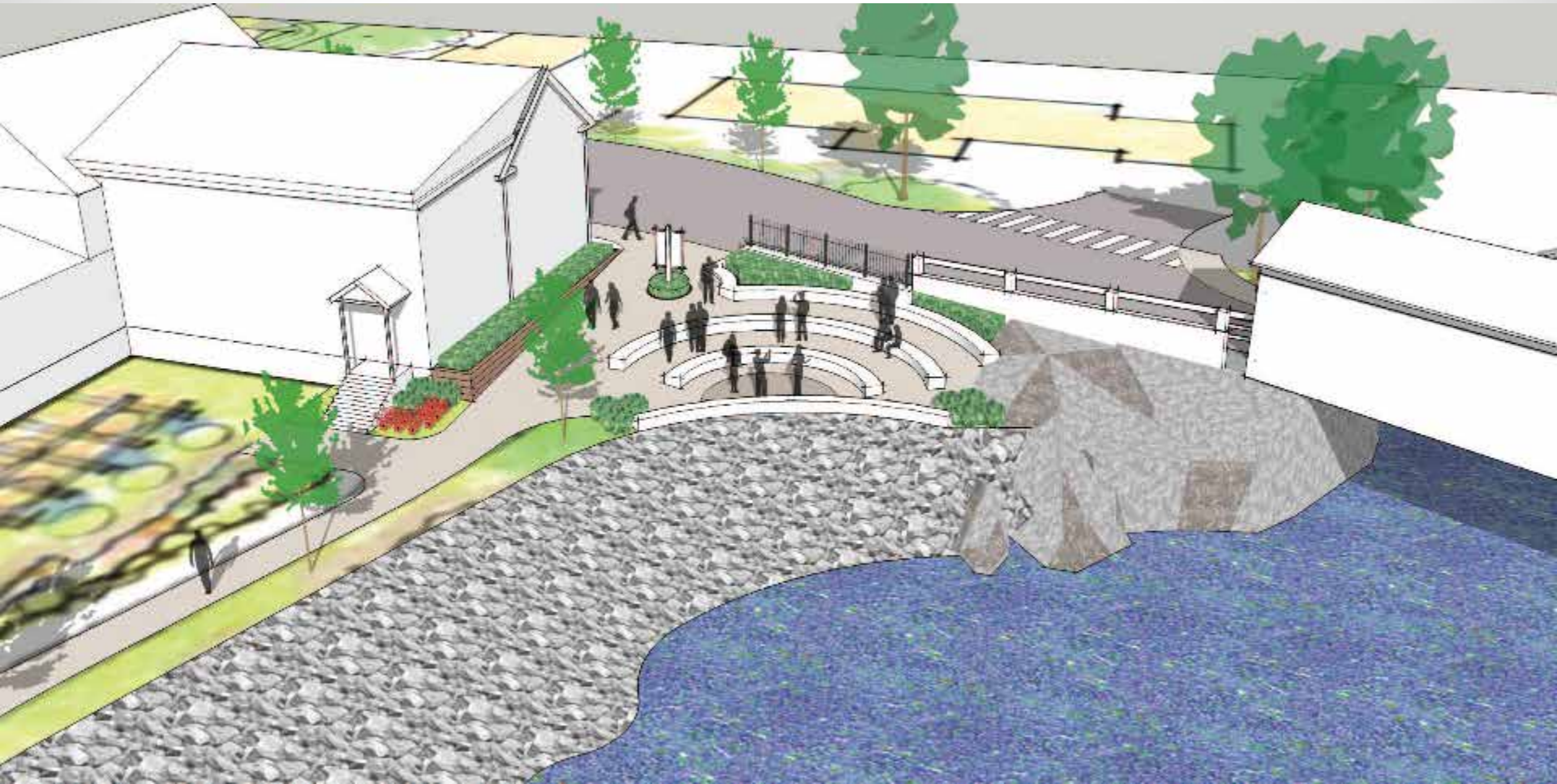
River Corridors: Conserve Land & Discourage Development



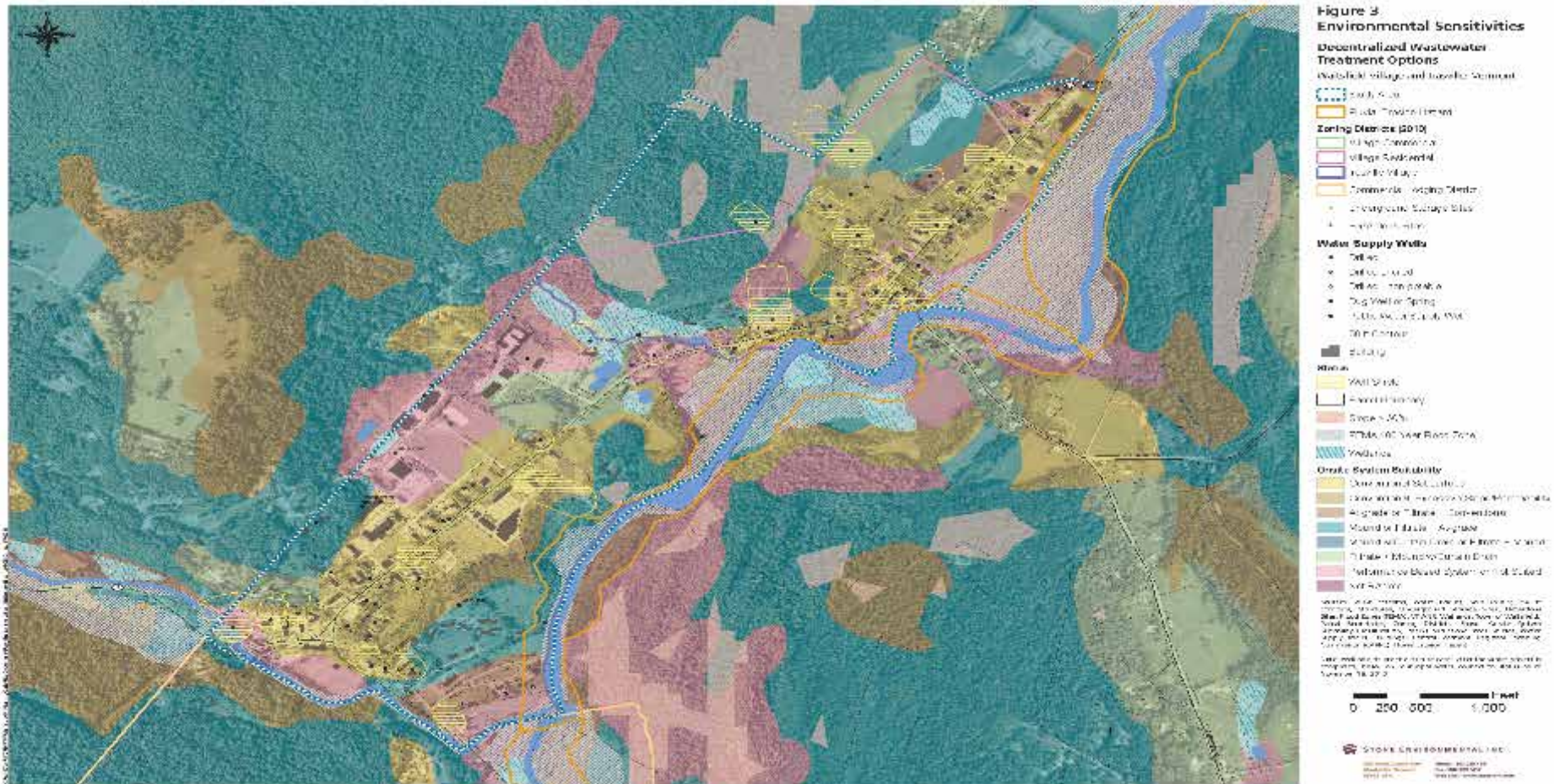
Vulnerable Settlements: Protect People, Buildings & Facilities



Vulnerable Settlements: Protect People, Buildings & Facilities



Safer Areas: Plan for New Development



Vulnerable Settlements: Protect People, Buildings & Facilities

Master Development Plan for the Irasville Growth Center *A Vision for a New Village*

Prepared for:
The Town of Waitsfield, Vermont
and the
Mad River Valley Planning District

September 2002



Prepared by:
Lamoureaux and Dickinson Consulting Engineers, Inc.
Essex Junction, Vermont

The Office of Robert A. White, ASLA
Norwich, Vermont

The Whole Watershed:

Manage Stormwater (*Slow it, Spread it, Sink it*)



The Whole Watershed:

Manage Stormwater (*Slow it, Spread it, Sink it*)



THANK YOU

Joshua Schwartz
MRV Planning District
joshua@mrvpd.org
802.595.0890

