



# connectSI

collaborating for regional prosperity



[HOME](#) : [ABOUT](#) : [COMMUNITY INITIATIVES](#) : [CELEBRATE SI](#) : [RESOURCES](#) : [CALENDAR](#) : [CONTACT](#)

*The Connect SI Foundation supports a collaborative, regional economic strategy for the southern 20 counties of Illinois. Our initiatives are built upon [broadband connectivity](#), with the concept that our dispersed assets can be connected to make our region a driving force in the world economy. [Read more >>](#)*



■ [BROADBAND TECHNOLOGY](#)

## OUR SUCCESSES

## HAPPENINGS

- ["I Want My Broadband"](#)  
[Sign up for access...](#)
- [Lead SI: Developing Future Leaders for Our Region. More >>](#)
- [Southern Illinois Online Nursing Initiative. Read more >>](#)
- [Telemedicine Regional Conference a huge success! Read more >>](#)
- [Join Our Listserve!](#)



**Cary Minnis**  
**EDA Chicago Regional Conference**  
**Chicago, IL**  
**September 30, 2014**

[Learn more about SIOTI >>](#)

[Learn more about Lead SI >>](#)



FIND US ON  
FACEBOOK

[HOME](#) : [ABOUT](#) : [COMMUNITY INITIATIVES](#) : [CELEBRATE SI](#) : [RESOURCES](#) : [CALENDAR](#) : [CONTACT](#) : [SITE MAP](#) : [JOIN OUR LISTSERVE](#)

© Copyright 2011-2013 Connect SI Foundation, Inc. All Rights Reserved.

# 20 Southernmost Illinois Counties

## Connect SI Region

130 Miles East-West

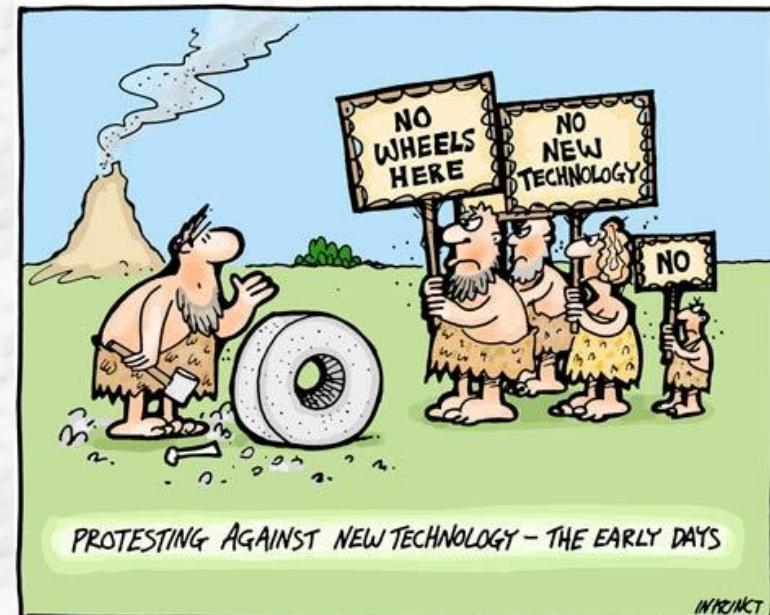


Population=423,670 Workforce=195,429



# History of Connect SI

- 2003 began as a three county economic assessment sponsored by Southern Illinois Coal Belt Champion Community.
- 2005 the work gained traction at the Southern Illinois Community Leaders Conference. The Southern Illinois Broadband Initiative was formed over a 17 county area.
- In early 2006, the name was changed from Southern Illinois Broadband Initiative to Connect SI. The project was formally launched under the Office of the President of Southern Illinois University
- Late 2007 the project transitioned from SIU to Man-Tra-Con Corporation, WIA Administrative Entity and 501c3.
- 2009 the Connect SI Foundation, Inc. was recognized as a 501C3 tax-exempt non-profit corporation.



# *The Call to Action*

## *Southern Region Poverty Ranking*

*(IL divided into six regions)*

Highest % in rural region	Highest poverty rate	Highest unemployment rate since 09/03	Lowest % college graduates	Highest % enrolled in Medicaid	Highest % age 5+ with a disability
<b>#1</b>	<b>#1</b>	<b>#1</b>	<b>#1</b>	<b>#1</b>	<b>#1</b>
Highest % of population over age 65	Highest % age 65+ in poverty	Highest % age 65+ with a disability	Lowest % of population 0-10	Highest % age 0-17 in poverty	Highest % households owner burdened
<b>#1</b>	<b>#1</b>	<b>#1</b>	<b>#1</b>	<b>#1</b>	<b>#4</b>
Highest % households lack complete plumbing	Highest % households lacking complete kitchen	Highest % commuting to work from other IL counties	Lowest % population work and live in same county	Highest % households rent burdened	Highest % of Adults with no High School Diploma
<b>#1</b>	<b>#1</b>	<b>#1</b>	<b>#3</b>	<b>#3</b>	<b>#1</b>

Source: IL Poverty Summit, "2004 Report on Illinois Poverty," Based on US 2000 Census or IL Dept of Employment Security data & Atlas of Illinois Poverty Spring 2003

# Mission & Vision

## Vision Statement

*“Connect SI will be a national leader for collaborative rural economic transformation fueled by world class broadband and health care.”*

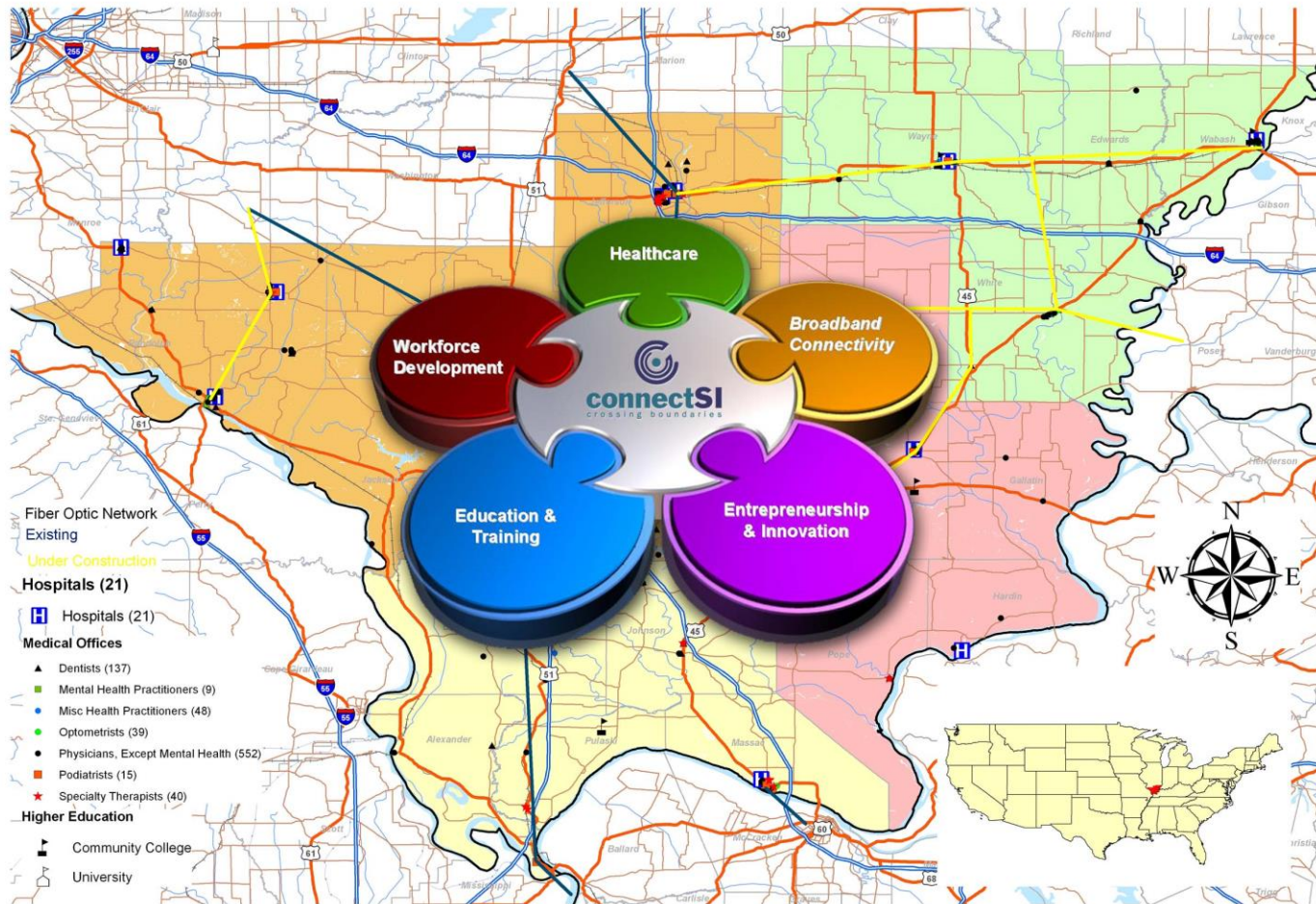
## Mission Statement

*“Connect SI will, through regional collaboration, encourage and sustain economic growth while valuing quality of life in southern Illinois.”*

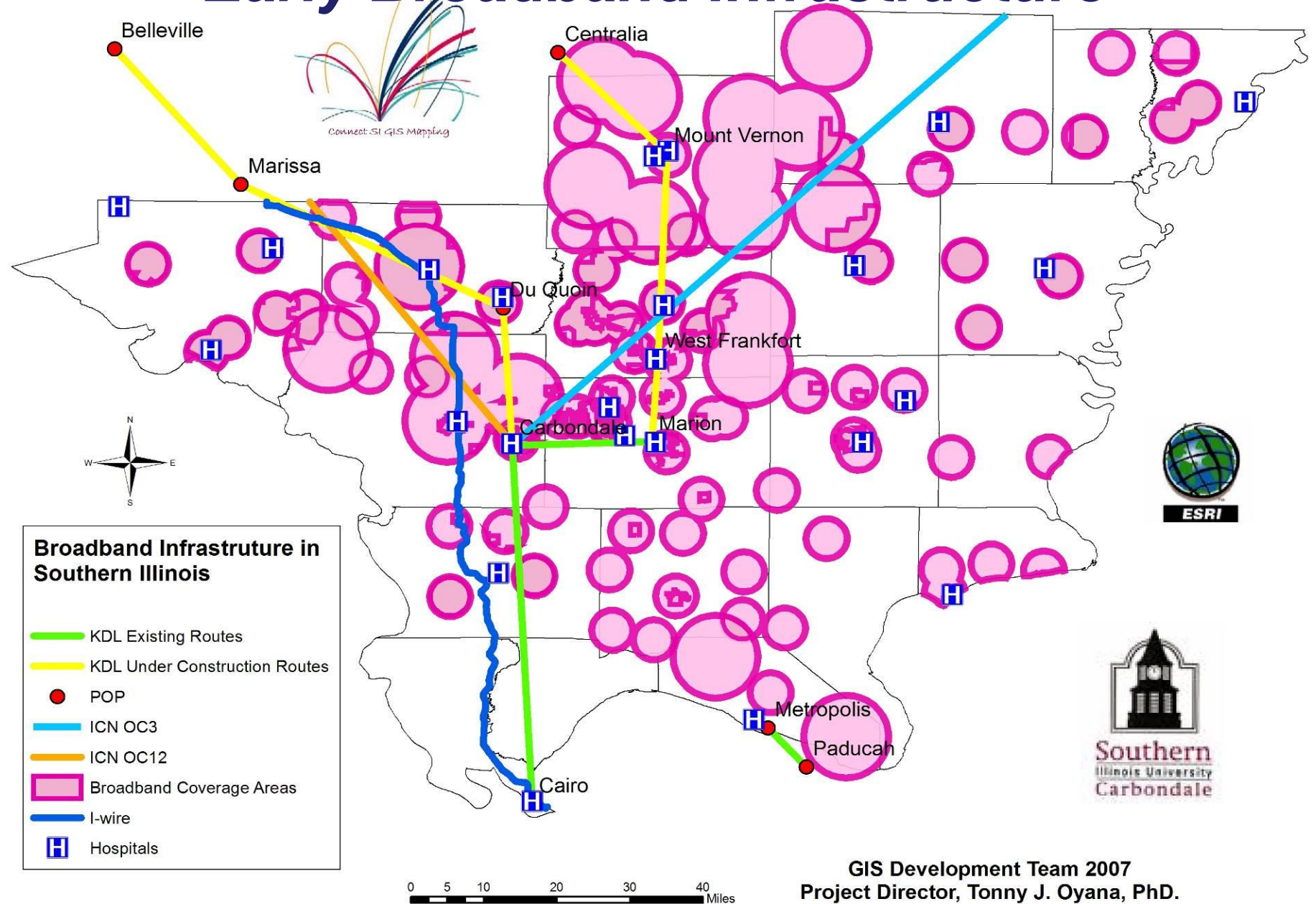


# Connect SI: 20 Counties – working as one!

Population of 423,000 – Workforce of 195,000



# Early Broadband Infrastructure





# Connect SI Tools

## Economic Scenario model

- Calculates the gross domestic product for counties or economic regions in southern Illinois
- It can be used by community leaders to benchmark the current economic state of their county or region and forecast the future impact of economic and community development strategies over five years.

## Demographic Profiles

- Provides current county-specific information on the population, labor force, taxes, income, housing, utilities, education, quality of life, and transportation in the 20-county Connect SI region for:
  - Business attraction, retention, and expansion
  - Reference for daily use
  - Other business research/analysis projects
  - Historical records

## Poverty Reports

- Provides statistics on Poverty, Unemployment, Bankruptcies, Median Household Income and EITC for the 20-county Connect SI region compared to the State and US.



# [www.IWantMyBroadband.com](http://www.IWantMyBroadband.com)

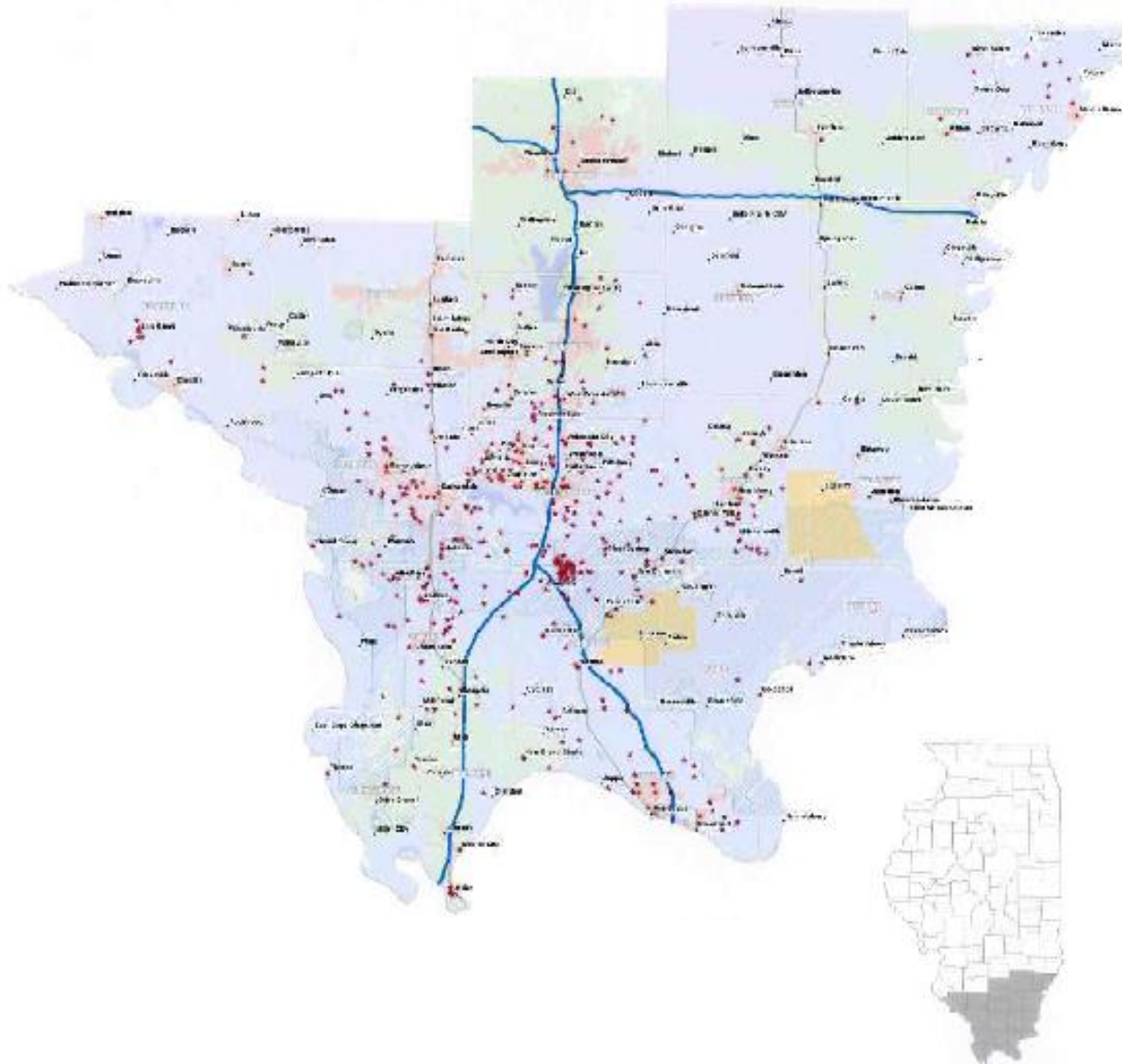


*IWantMyBroadband*  
.com

Contact all of the  
broadband providers in  
the area with just  
one form.

 Sign up today

# ConnectSI Inquiries for Southern Illinois



"Dial-up service? What's a dial?"



# Critical shortage of RNs

## SIONI

- In 2009, the Illinois Board of Nursing approved the **Southern Illinois Online Nursing Initiative (SIONI)**, a new full-time, hybrid-online associate degree nursing program for working LPNs to become RNs.
- Six community colleges working in collaboration with the Local Workforce Investment Act (LWIA) negotiated agreements with local healthcare providers to pay a significant portion of staff training costs through incumbent worker training programs.
- Working LPNs were issued laptops from each community college and trained on utilization of the Evolve instructional platform.
- Graduates remain in the area serving southern Illinois earning as much as \$25,000 more per year.
- SIONI is no longer offered, but each of the Community Colleges is now offering their own version of online nursing programs.





Connect SI was awarded \$176,500 from the Illinois Department of Healthcare and Family Services to facilitate a planning process for a regional Health Information Exchange (HIE) in the 31 southernmost counties (MTA 3). This work is part of a Healthcare and Family Services statewide effort to implement an HIE.

Connect SI and the HIESI Steering Committee have completed the work in Phase One. Members of the HIESI Steering Committee and the stakeholder groups represent a vast array of healthcare specializations and facilities.

HIESI is currently operating with the Illinois Critical Access Hospitals within the region and Southern Illinois Healthcare utilizing the NextGen platform.







Project NetWise is a community-based effort to promote safe Internet practices to students and senior citizens in southern Illinois. Internet safety presentations to schools, senior centers, and other groups are available at no charge. Approximately 60 teachers have attended 3 day-long training programs built upon state-mandated internet safety curriculum. Completing teachers received certificates from NetSafe, the nationally-recognized non-profit known for its advocacy for a safe internet environment.



[www.broadbandillinois.com](http://www.broadbandillinois.com)



## Take the broadband speed test

Are you at this address?

If not, enter the correct address:

110 South Dixon Avenue, Carbondale, IL 62901

**Test complete! Please fill out the rest of the survey.**

Download speed	Upload speed	Latency
<b>2.97</b>	<b>6.33</b>	<b>62</b>
Mbps	Mbps	ms

Select rating \*



AT&T Services, Inc. ATT

\$45/month

Home

*I would like affordable rates and additional bandwidth.*

Send

© 2011 Broadband Illinois. All rights reserved.

## Broadband Illinois E-Teams

### Illinois e-Teams in Southern Illinois

The concept of the Illinois e-Teams (ILeT's) model is predicated on gaining the direct engagement of leaders from multiple sectors at local levels to assist in the following local activities:

- Mapping validation
- Demand Aggregation
- Demand Creation
- Technology Assistance
- Speed testing
- Empowerment





## ***Challenge: Professional Development Requirements***

## ***Solution: Southern Illinois Delta Regional Simulation and Learning Lab***

**\$519,924 Delta Healthcare Services Grant – USDA Rural Utilities Services, Southern Illinois Healthcare and John A. Logan College**

- Purchase of simulation mannequins and video conferencing equipment for all of our Delta community colleges and two elementary schools!
- \$150,000 Delta Regional Authority grant assisted in the purchase of equipment.
- Advisory committee working to connect other colleges and high schools to the planned “cloud library” of simulation exercises.
- Robust broadband was a necessity!

**Challenge: Out-migration of  
medical services and  
attraction of young  
physicians**

**Solution: Telemedicine**

**CONFERENCE SCHEDULE**

**Registration & Breakfast:** 7:30 a.m. to 9:00 a.m.

**Conference:** 9:00 a.m. to 4:00 p.m.

**FEATURED SPEAKERS**

**Nina M. Antoniotti**, RN, MBA, PhD, Director of TeleHealth,  
Marshfield Clinic, Marshfield Wisconsin

**Becky Sanders**, Director of Operations, Indiana Rural Health Association;  
Program Director, Upper Midwest Telehealth Resource Center;

**Nancy Nahlik**, Senior Coordinator Physician Services,  
Missouri Baptist Medical Center;

A representative from Illinois Hospital Association (invited)

**R.S.V.P. BY MARCH 14, 2014**

For additional information and/or to reserve your place, contact Kathy Lively  
at (618) 998-0970, ext. 237, or via email at: [KathyLively@mantracon.org](mailto:KathyLively@mantracon.org).



**YOU ARE CORDIALLY INVITED**

**Telemedicine Regional Conference**

**Thursday, March 20, 2014**

9:00 a.m. to 4:00 p.m.

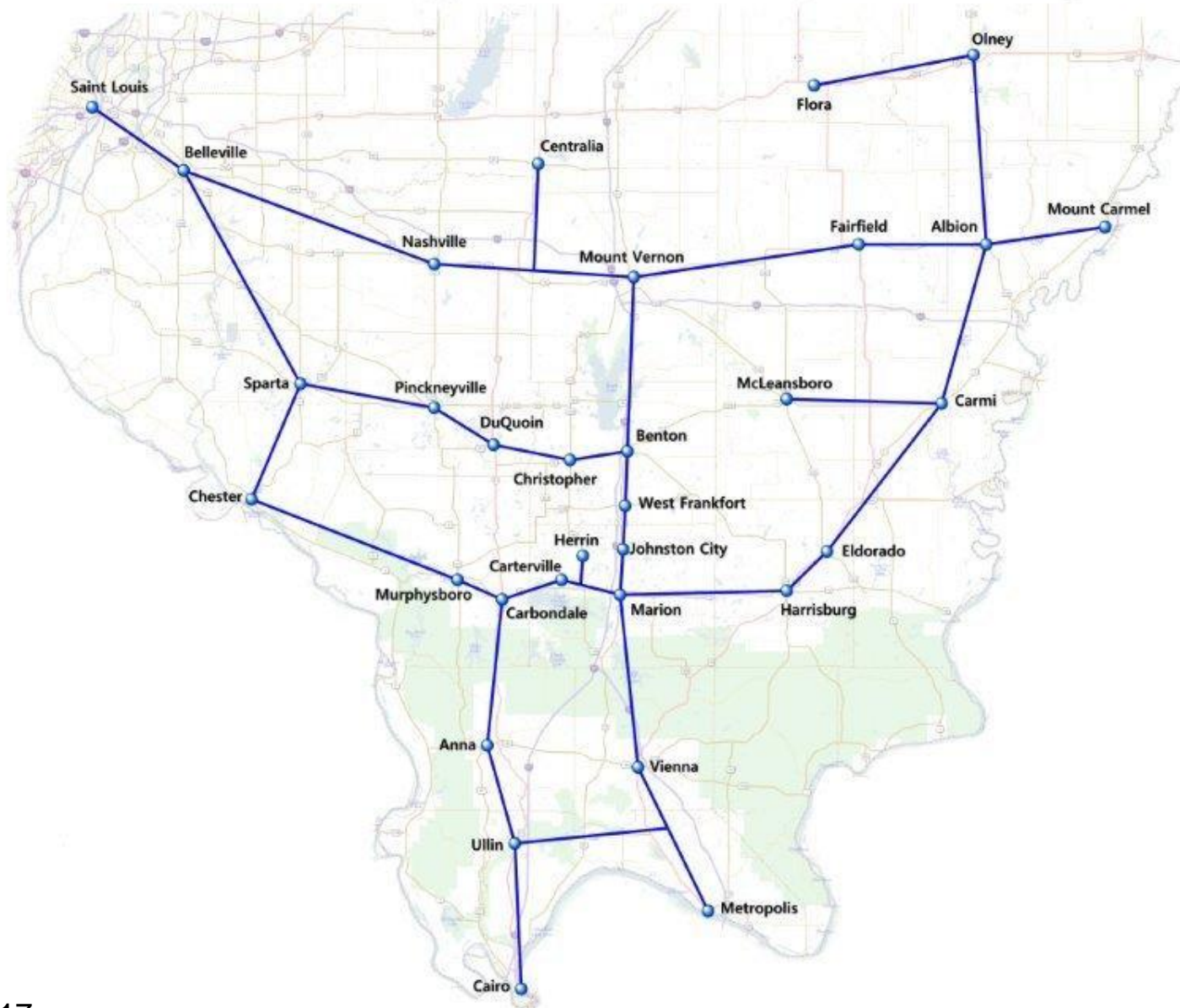
Williamson County Pavilion, Marion, Illinois

Sponsored by Connect SI through  
an SIU School of Medicine Telemedicine grant





# Illinois Broadband Opportunities Partnership - Southern Region

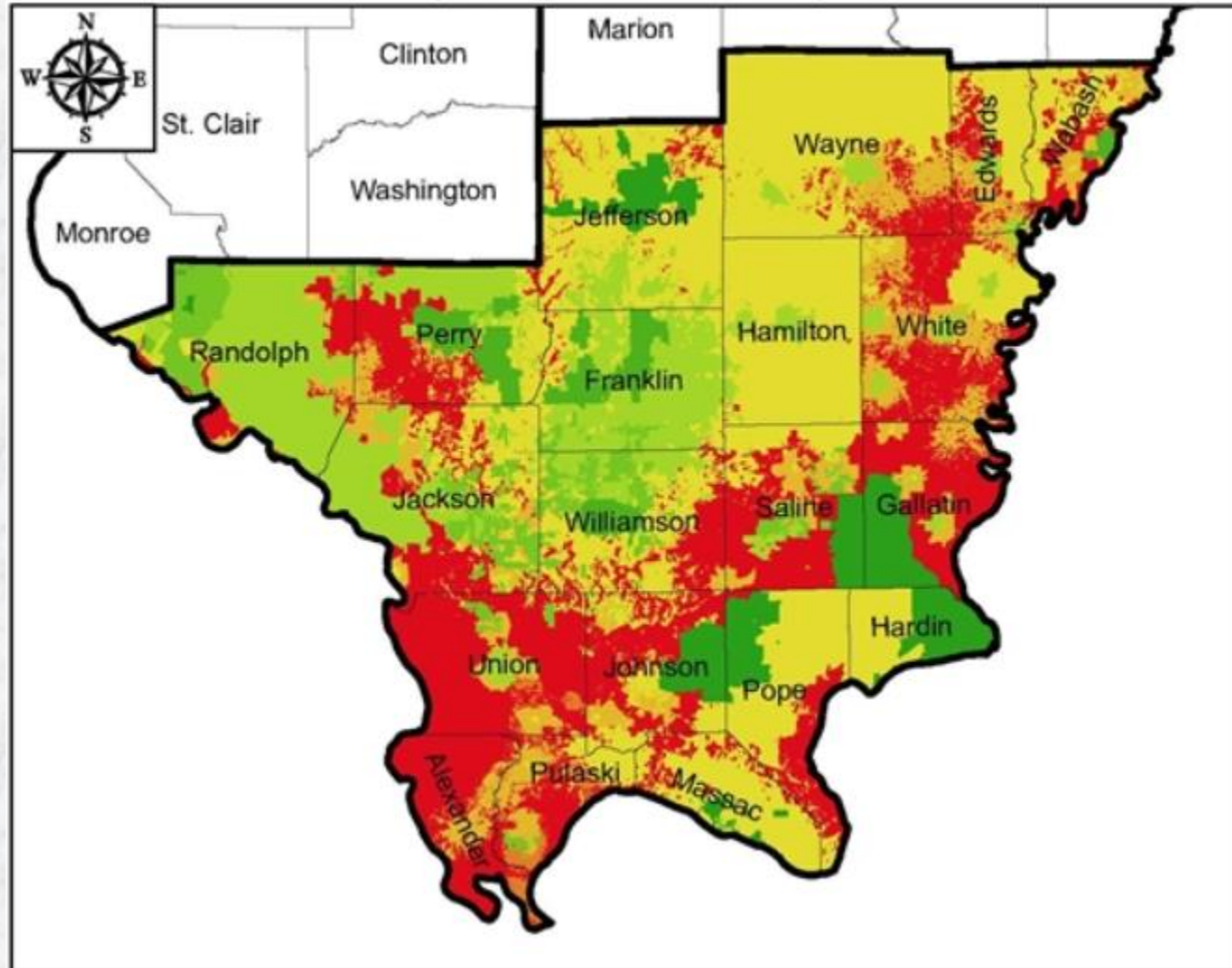


## Key Project Facts

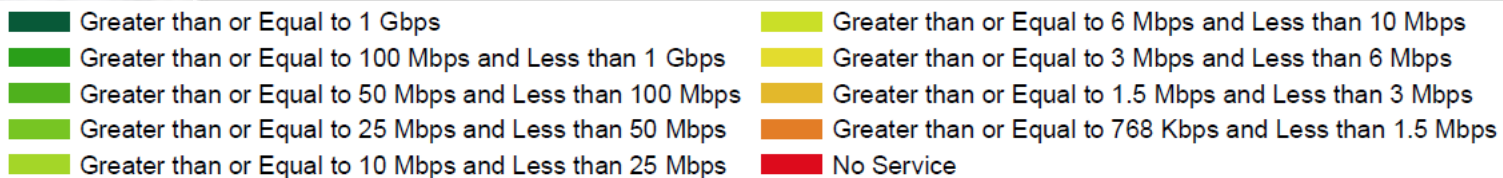
- **More than 740 Miles of Fiber Cable**
- **Covers 23 Counties in Southern Illinois**
- **232 Anchor Institutions Connected**
  - 111 Schools (K-12)
  - 60 Medical and Healthcare Providers
  - 28 Public Safety Entities
  - 23 Libraries
  - 9 Community Colleges
  - 1 Major University (SIU-C)
- **Key Public Private Partnerships**
  - IBOP – East Central Region (ICN)
  - CSI NG911 (Next Generation E911)
- **Completed by August 1, 2013**
- **Services ranging from 10 Mbps to 1 Gbps**
- **Total Project Budget: \$ 45,395,020**
  - Federal Funding: \$ 31,515,253
  - State of Illinois Funding: \$ 11,351,250
  - CSI NG911 Funding: \$ 400,000
  - Private Funding: \$ 2,128,517



# Current Broadband Infrastructure



Partnership for a  
Connected Illinois -  
December 05, 2012



# ***Coverage & Penetration Success of CSI***

- In the first five years, Broadband coverage in southern Illinois increased from 25% to 75% and the Broadband adoption rate among adults increased from 12% to 54%
- \$175 million private and public sector investments in new Broadband infrastructure
- Over \$100 million lost annually in healthcare spending has been recovered.

*If you would like to know more about Connect SI or any of the projects currently underway, please contact:*

**Kathy Lively**

Connect SI

Executive Director

3000 W. De Young Street, Suite 800B

Marion IL 62959

[kathylively@mantracon.org](mailto:kathylively@mantracon.org)

Phone: (618) 998-0970 ext. 237

Fax: (618) 998-1291

[www.connectsi.us](http://www.connectsi.us)





*If you would like to know more about Connect SI or any of the projects currently underway, please contact:*

**Cary Minnis**

Greater Egypt Regional Planning  
and Development Commission

3000 West DeYoung

Marion, IL 62959

caryminnis@greateregypt.org

Phone: (618) 997-9351

[www.connectsi.us](http://www.connectsi.us)

