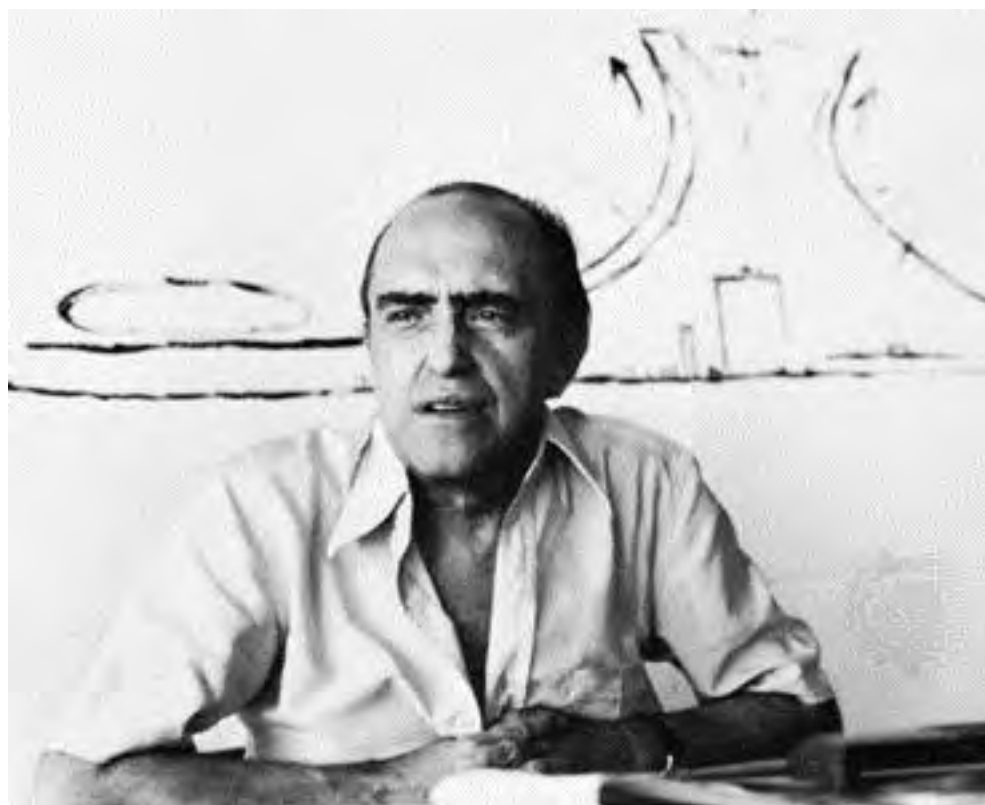


**1922.** The highways and towers of Le Corbusier's City of Tomorrow inspired the urban renewal program in America. *(Courtesy of Artists Rights Society [ARS] / SPADEM, 1995, Paris)*



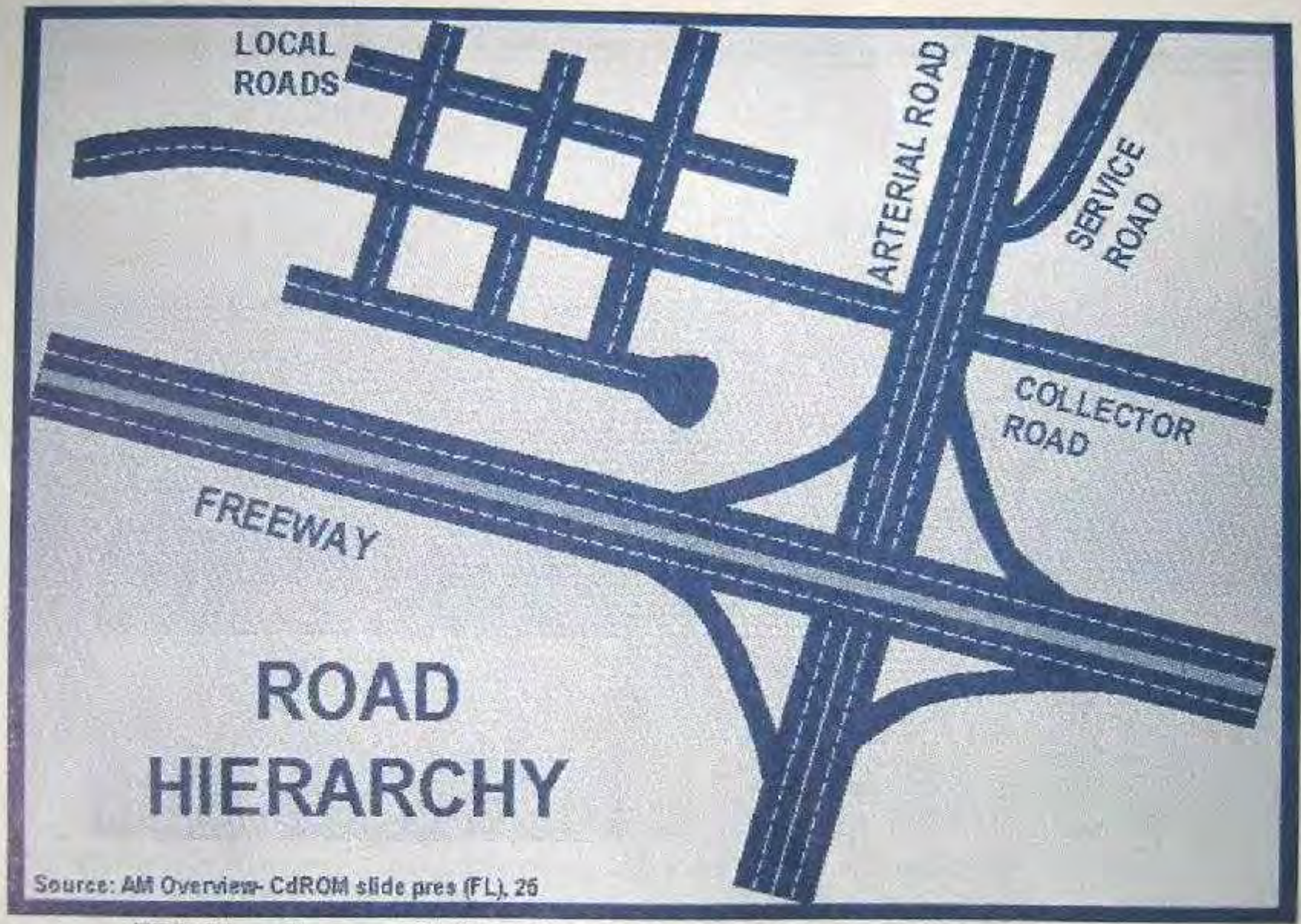












**Well-planned highway systems enhance safety and traffic flow.**


**Wisconsin Dept. of Transportation**











An ITE Recommended Practice

**Designing Walkable Urban Thoroughfares:  
A Context Sensitive Approach**

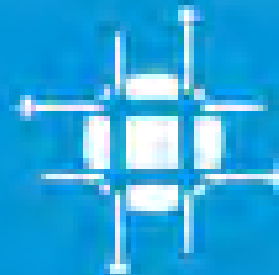


Institute of Transportation Engineers



2014 PROJECT FOR TRANSPORTATION BUREAU

# Sustainable Street Network Principles



©2014 PROJECT FOR TRANSPORTATION BUREAU



By Statute of  
the MARYLAND  
States of America  
published in the  
OVERSEAS.  
Year  
CC.

ARGE TOWN.

ATIONS  
of the Plan.

By the different Sections,  
figures in Areas of different  
land shown, were first done  
involuntarily ground was  
negative property, and the  
will improvement in other cases  
will call for  
maps of direct communication have  
been the regular, and most direct  
method, and to preserve through the whole  
of the plan, and to preserve the same  
of these existing streets, over the same in  
the plan, and to preserve the same  
of these existing streets, over the same in  
the plan, and to preserve the same

Representation of the  
Plan shown, over the same  
in the plan.



Lat. Capitol. 38.53. N.  
Long. 77. 0.

POTOMAC  
RIVER.

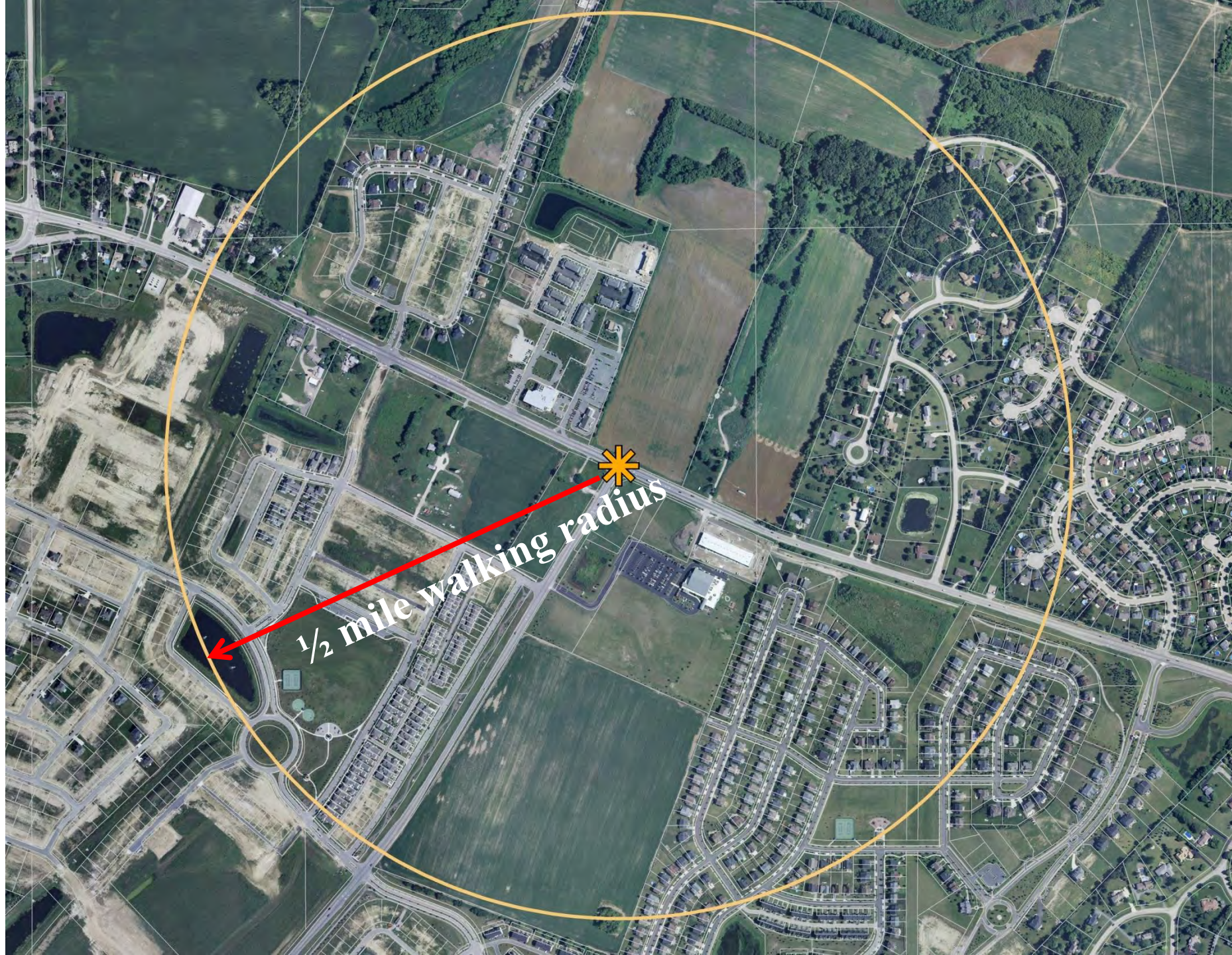
EASTERN BRANCH.

LAND WITHIN THE TERRITORY OF CO.  
Breadth of the Streets.  
THE ground shown, and built streets, are laid out

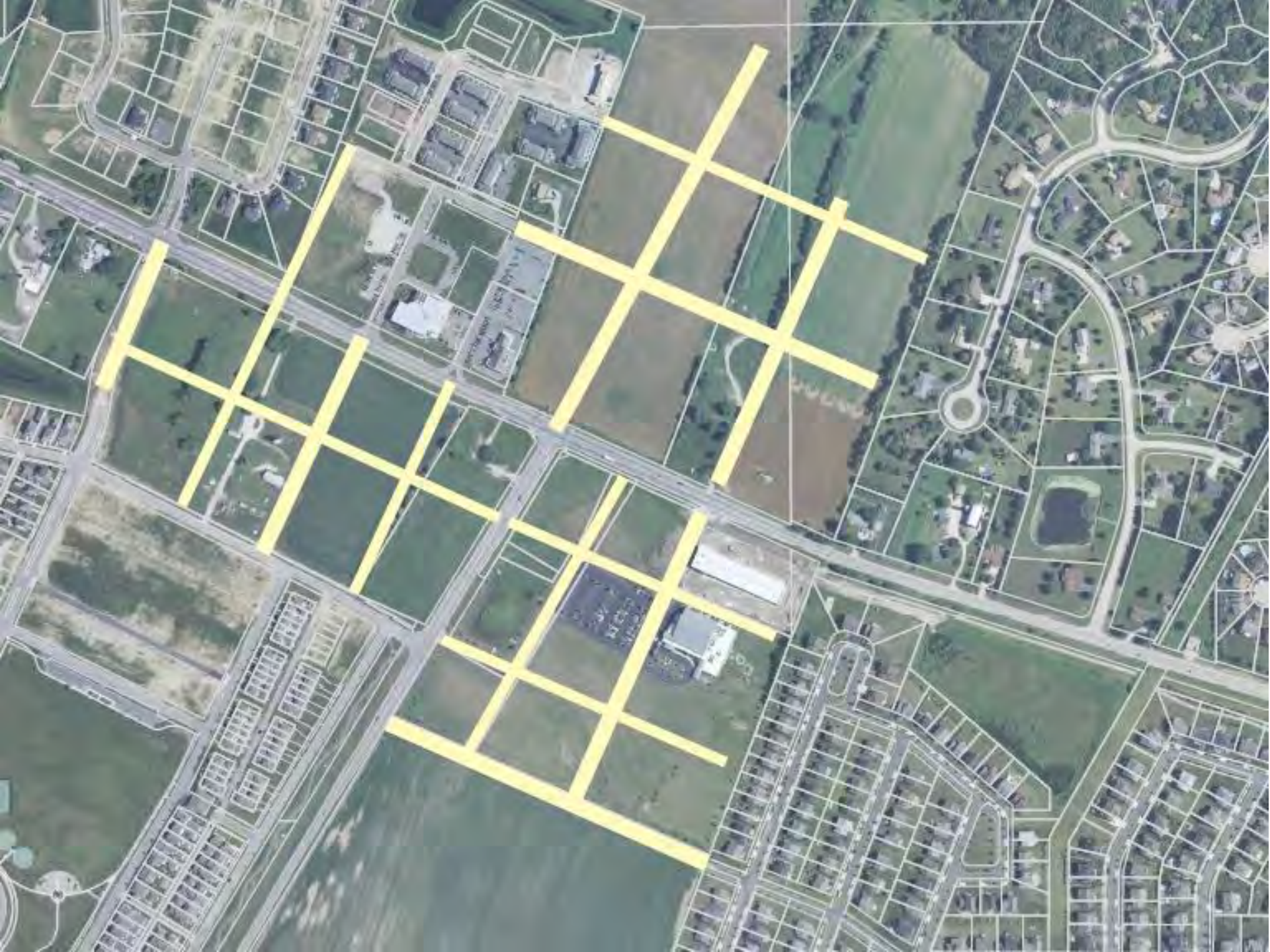








*1/2 mile walking radius*





Pedestrian Area

Parallel Parking

Side Access Road

Landscaped Median

Through Travel Lanes

Landscaped Median

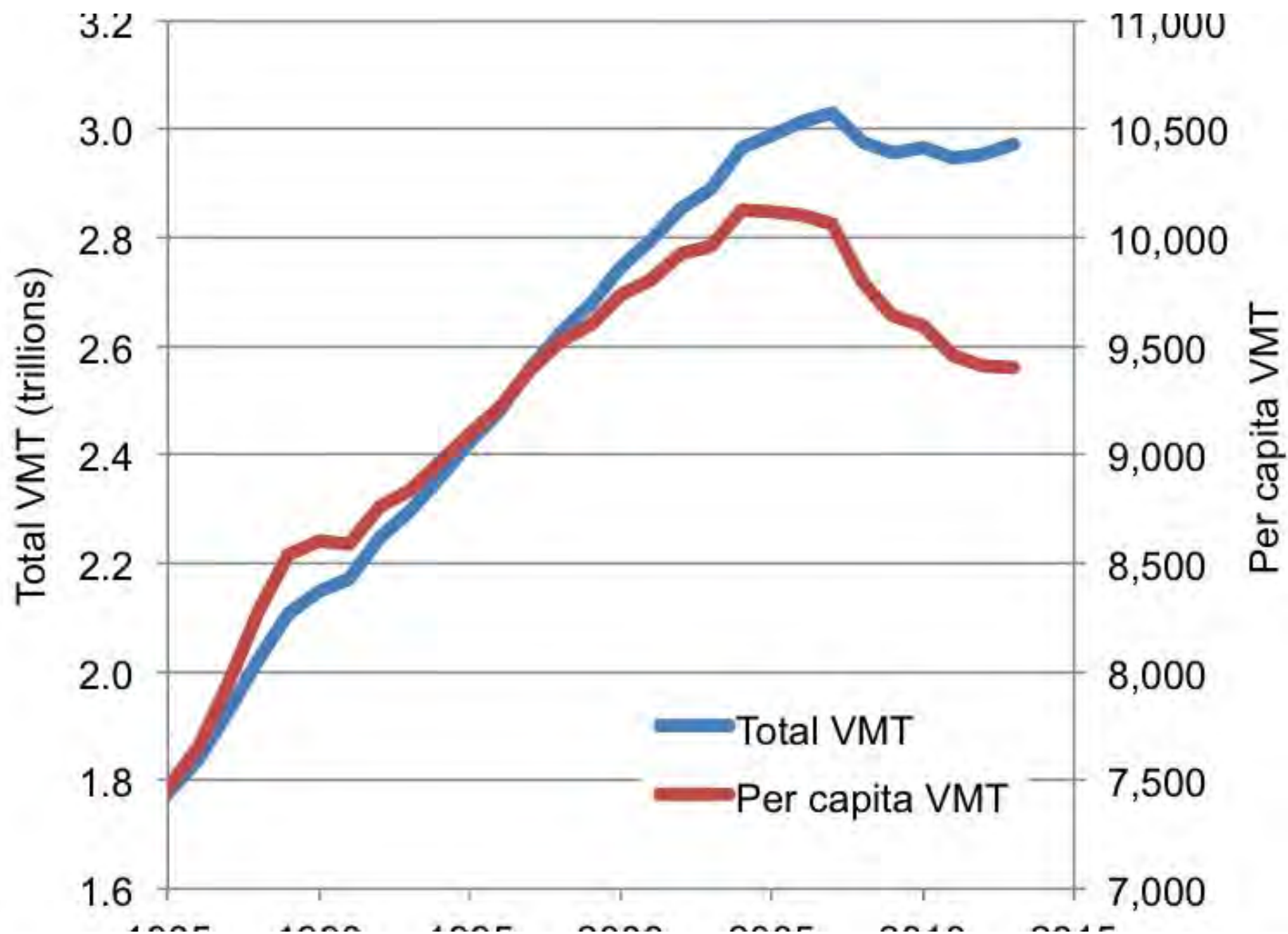
Traffic Signals

Minor streets  
connect only with  
side access roads



















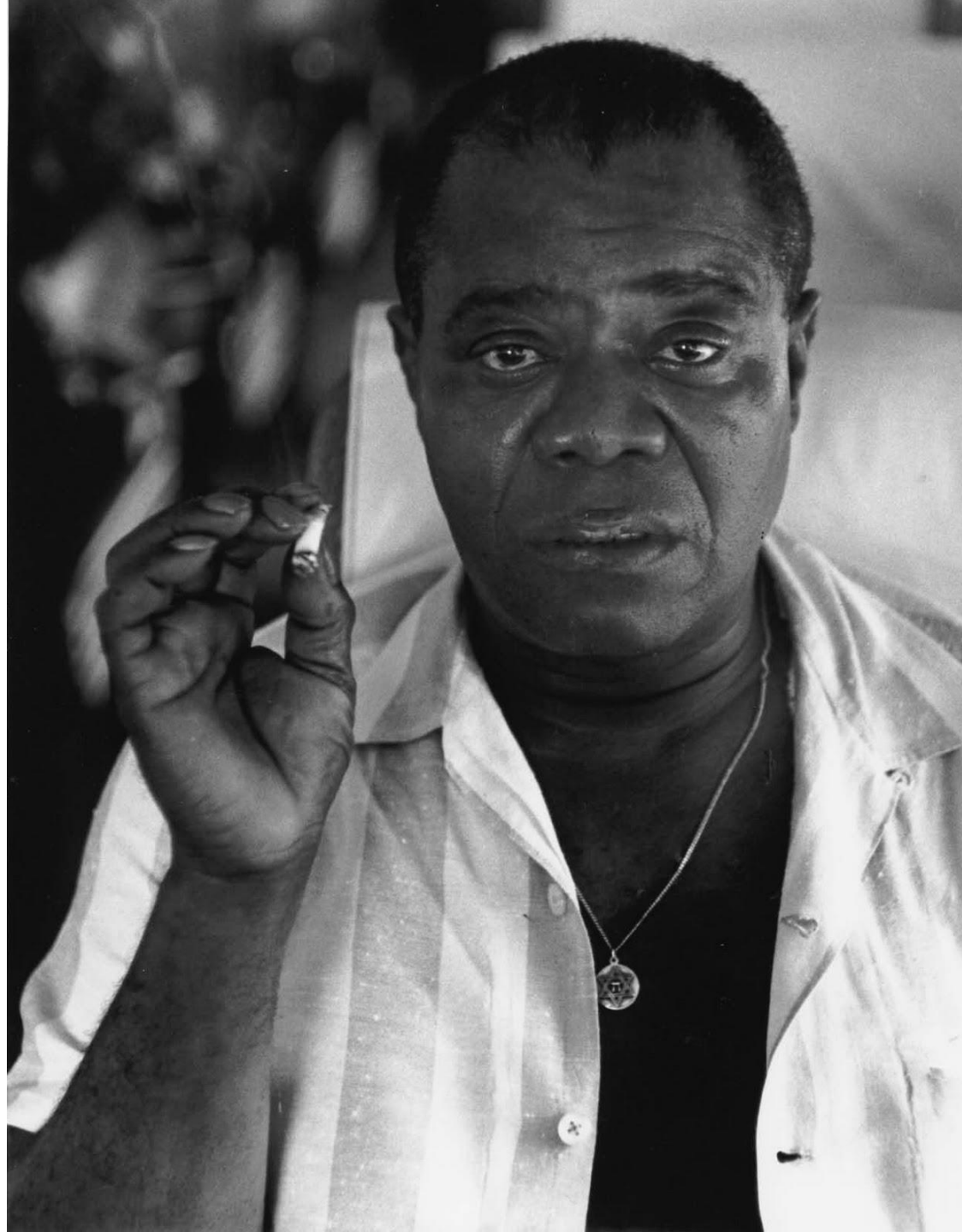


























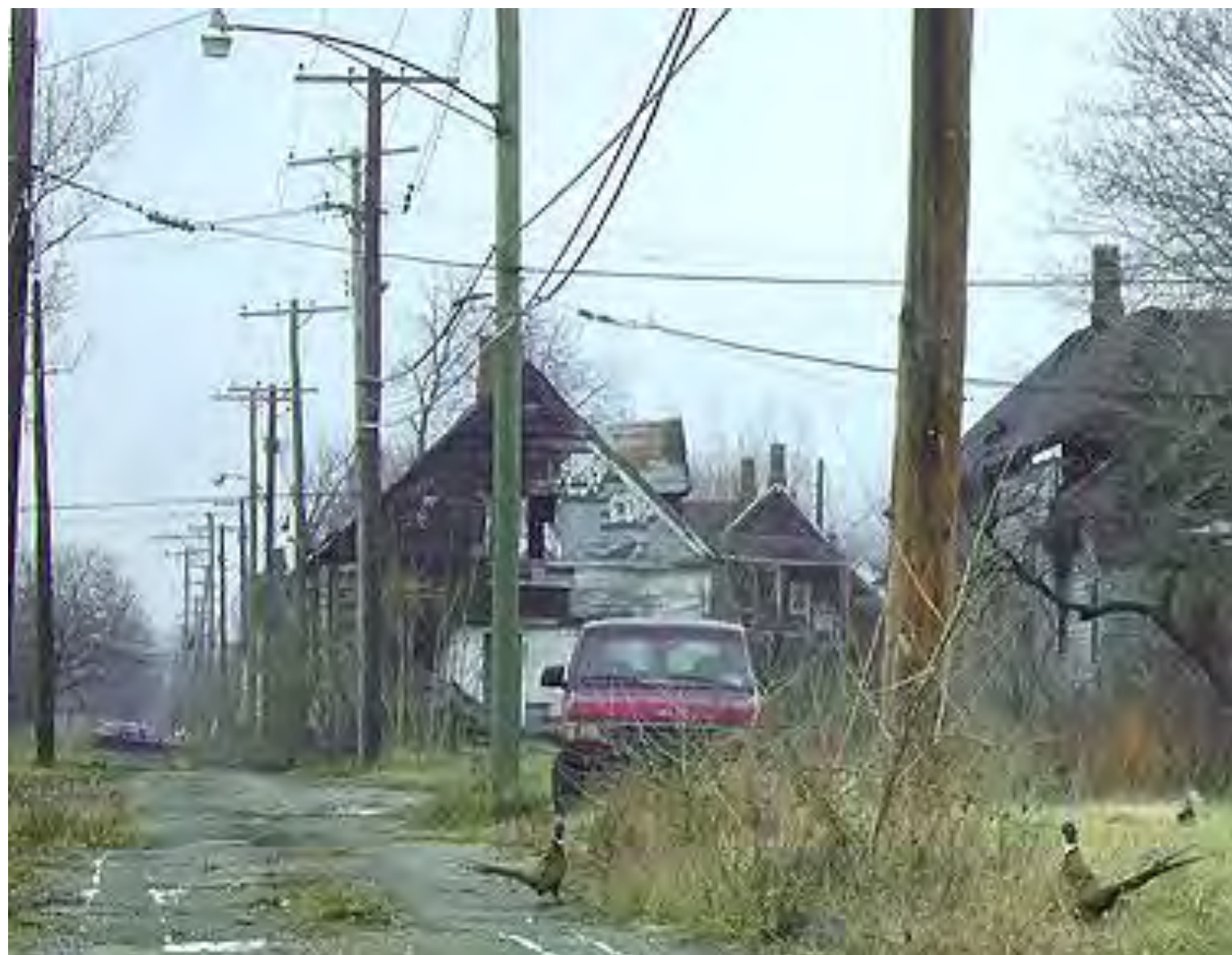






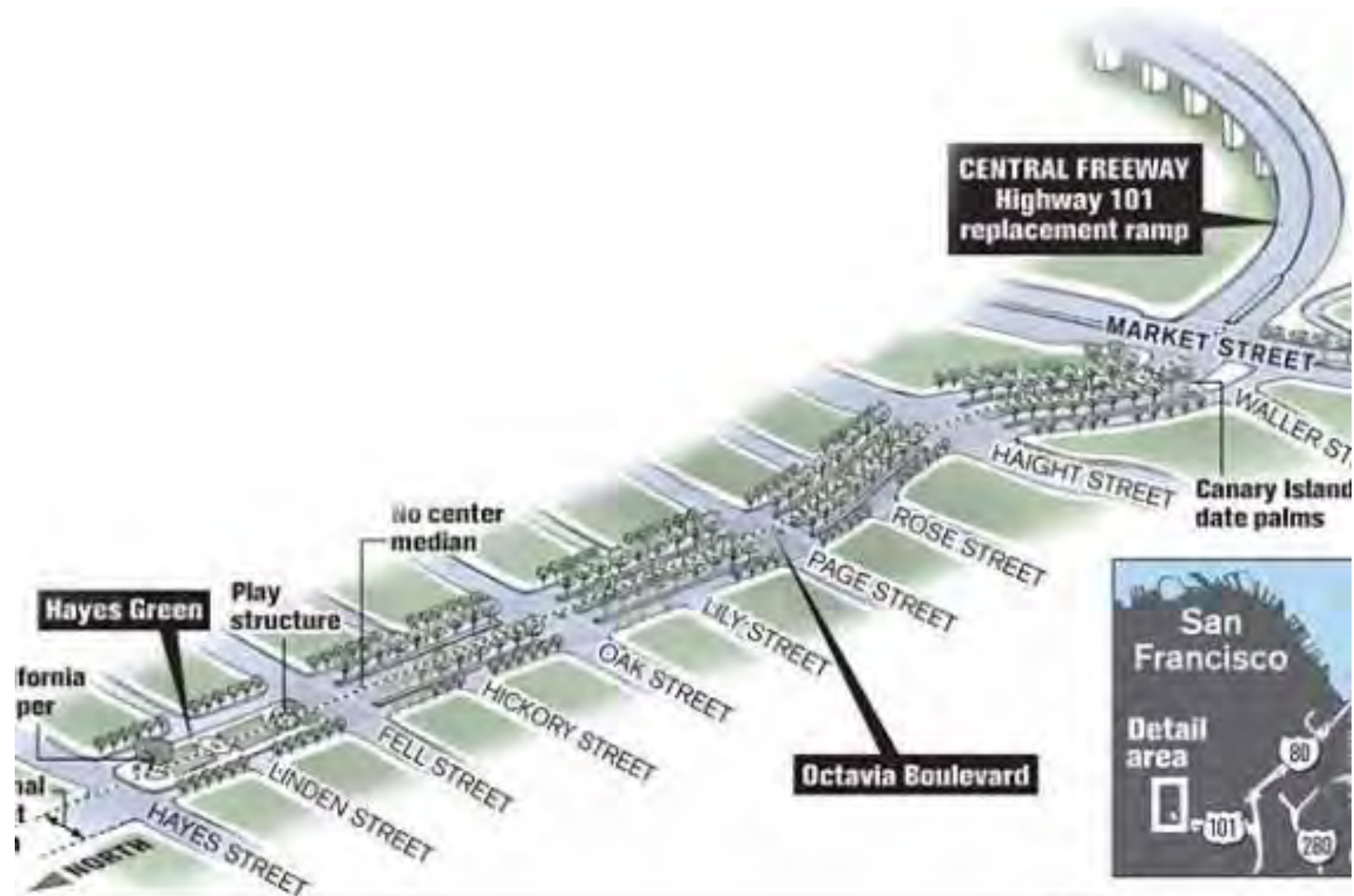








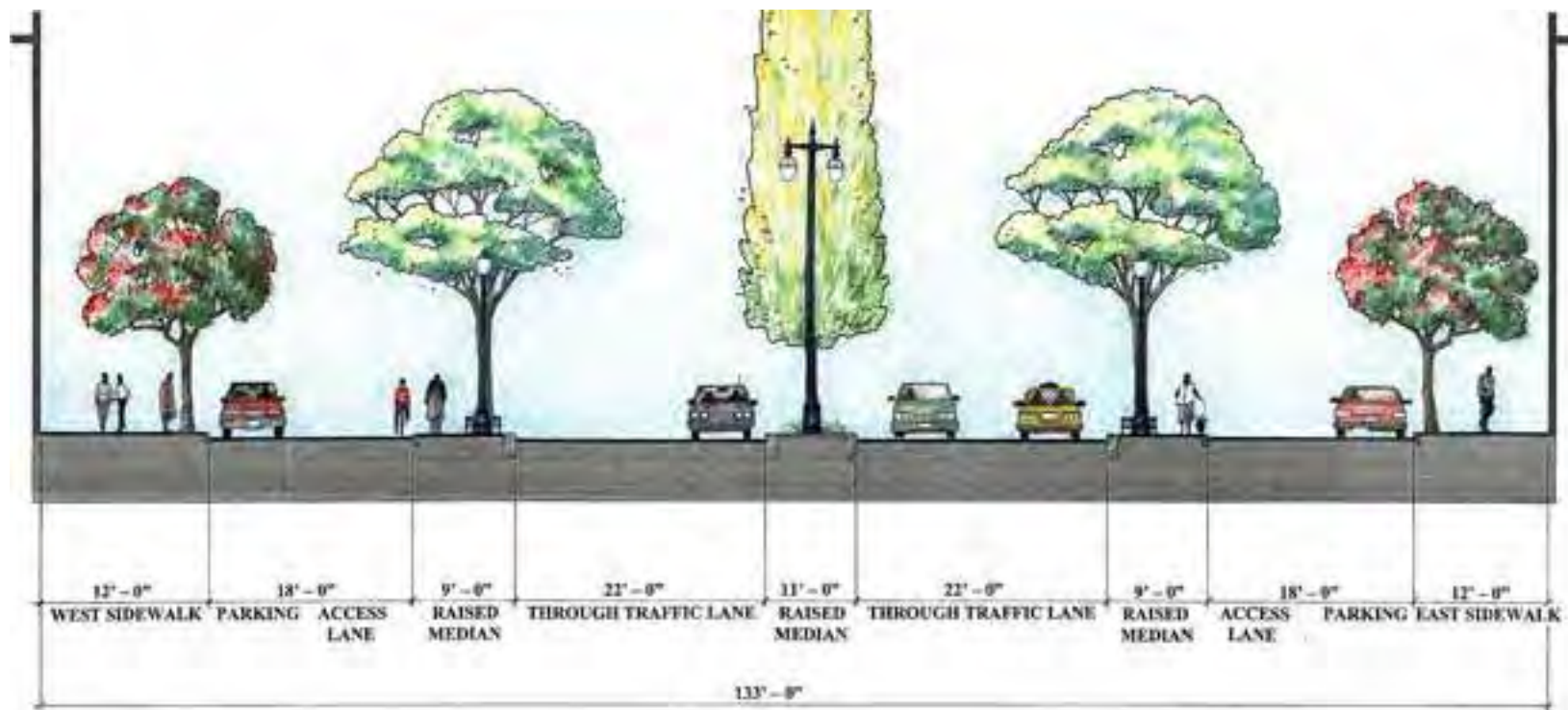






Chronicle / Katy Raddatz





## SECTION

SCALE: 1/8" = 1'-0"

SECTION 100-100-100







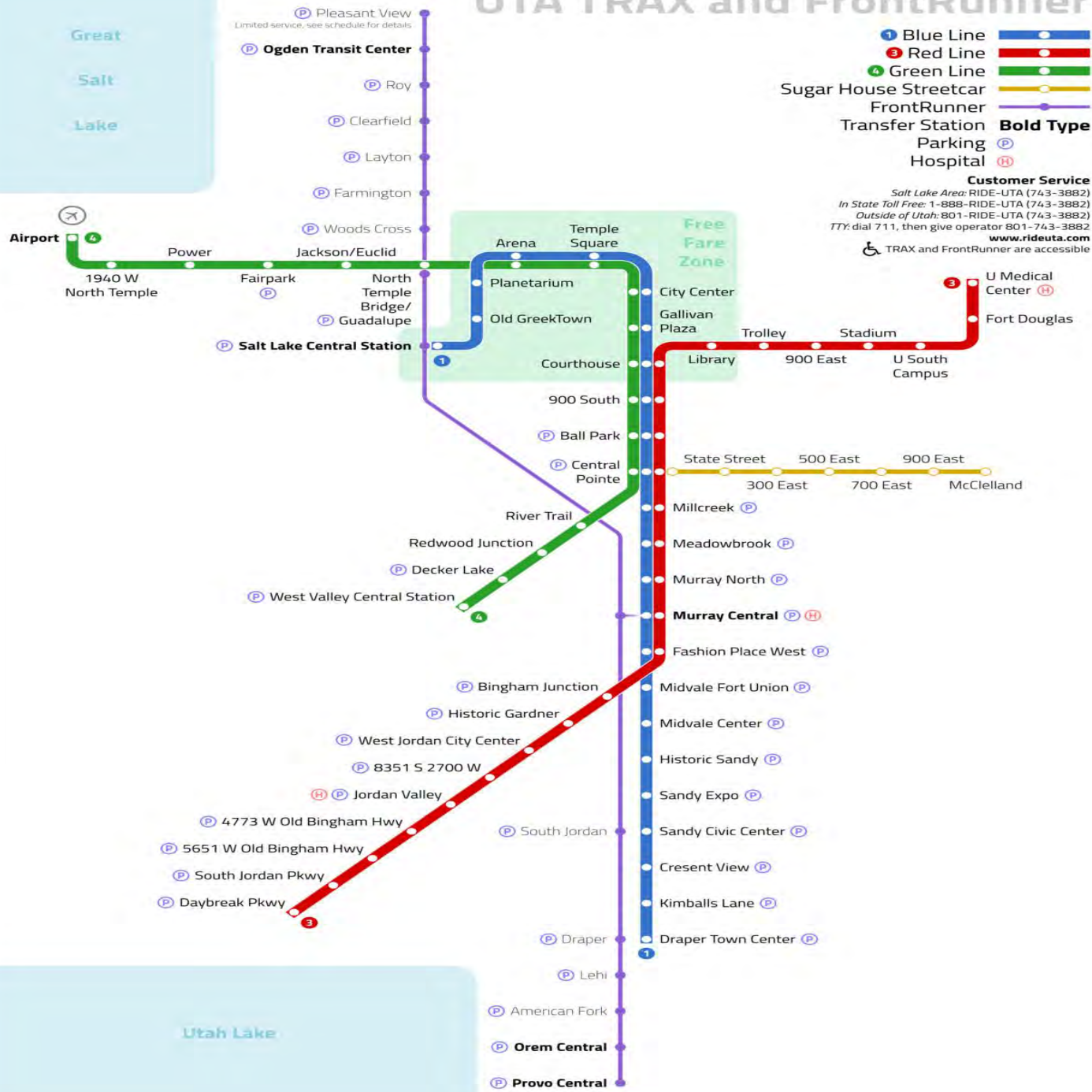








# UTA TRAX and FrontRunner





Your Door to

**FHA**



**HOMEOWNERSHIP**

## Restrictions on Commercial Components

	Cap on Gross Income Derived	Cap on Gross Floor Area / Net Rentable Space
HUD 221(d)4	15%	10%
HUD 220	30%	20%
Fannie Mae	20%	35%
Freddie Mac	25%	20%



## FARM TOWN MARKET

INDIAN GROCERY \* FLOWER \* FRESH FRUIT & VEGETABLE  
774 FLATBUSH AVE.

774 FLATBUSH AVE.

**HAIR**  
Braiding  
and Extensions

Gold Security Guard Services, Inc.  
1-800-447-5538 [www.goldguards.com](http://www.goldguards.com)  
Security Guard & Training School



**Dr. BAMBOO Express**  
RESTAURANT & BAKERY

**CONTACT:** 202-462-1000 FAX: 202-462-1001  
**WWW:** WWW.DCARTIST.COM

*Pretty Girl*

770













Jennifer's  
Nail  
Special!  
\$35  
Korean & French  
Nails Available  
Walk-In Service

TANORAMA  
SUNTANNING CENTER

BEA & SWEET ALON

SPECIAL \$35  
Pedicure & Mani  
WELCOME  
832-0777

plattini  
wine & dine

lunch • dinner

















Our Thanks to...

FINANCING

City of Buffalo Office of Strategic  
Planning

Economic Development Initiative  
Housing and Urban

Development Appropriation

Empire State Development  
Corporation

M&T Bank

New York State Housing Trust  
Fund Corporation

New York State Division of  
Housing and Community Renewal

RBC–Apollo Equity Partners

The Community

Preservation Corporation

## FUNDERS

The Baird Foundation

The Cameron Baird Foundation

Community Foundation for Greater  
Buffalo

Peter C. Cornell Trust

M&T Charitable Foundation

National Trust for Historic

Preservation / HGTV Restore

America Program

The John R. Oishei Foundation

Seymour H. Knox Foundation

Margaret L. Wendt Foundation

Zemsky Family Foundation







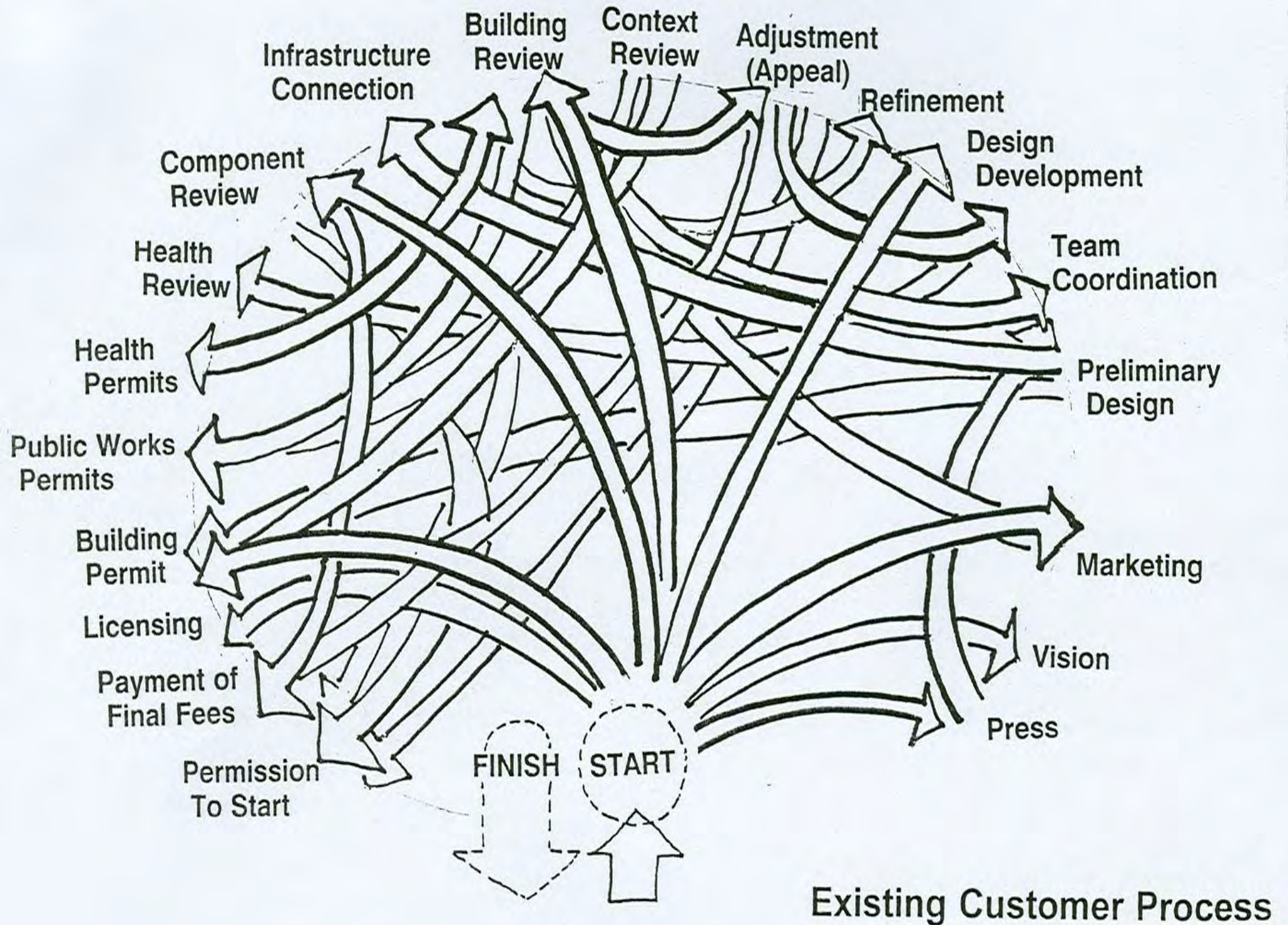






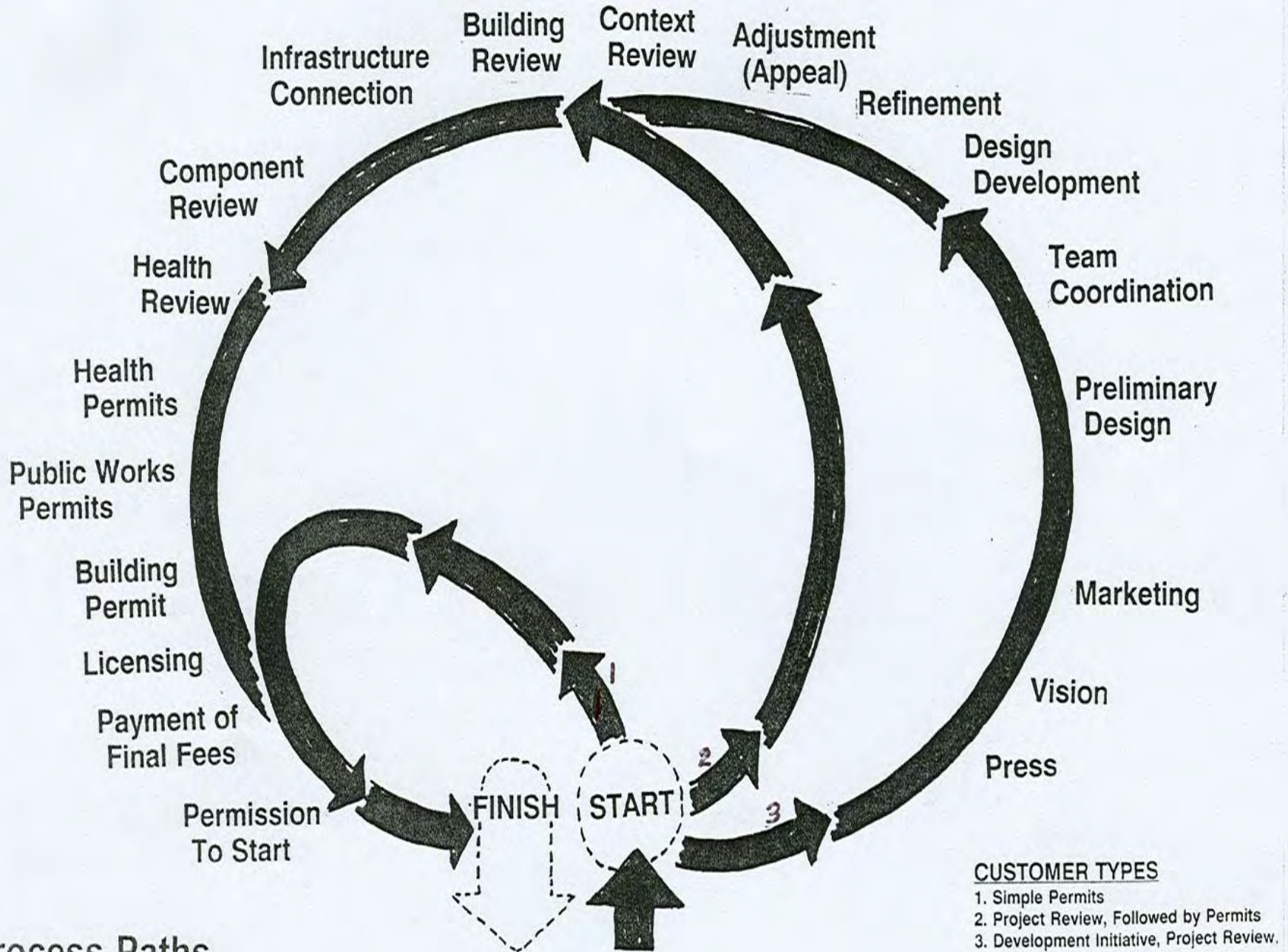








## Process Paths

















# THE WEALTH OF CITIES

*Revitalizing the Centers of American Life*

JOHN O. NORQUIST

An aerial photograph of a city grid, likely New York City, showing a river (the Hudson River) on the left and a dense urban grid on the right. The image is in a sepia or aged tone. The title 'CHARTER' is written in large, red, serif capital letters across the top. Below it, 'OF THE NEW URBANISM' is written in smaller, black, serif capital letters.

# CHARTER

## OF THE NEW URBANISM

REGION | NEIGHBORHOOD, DISTRICT, AND CORRIDOR | BLOCK, STREET, AND BUILDING

CONGRESS FOR THE NEW URBANISM