

# Tools for Economic Recovery and Resiliency

**Presentation to the National Association of Development Organizations**

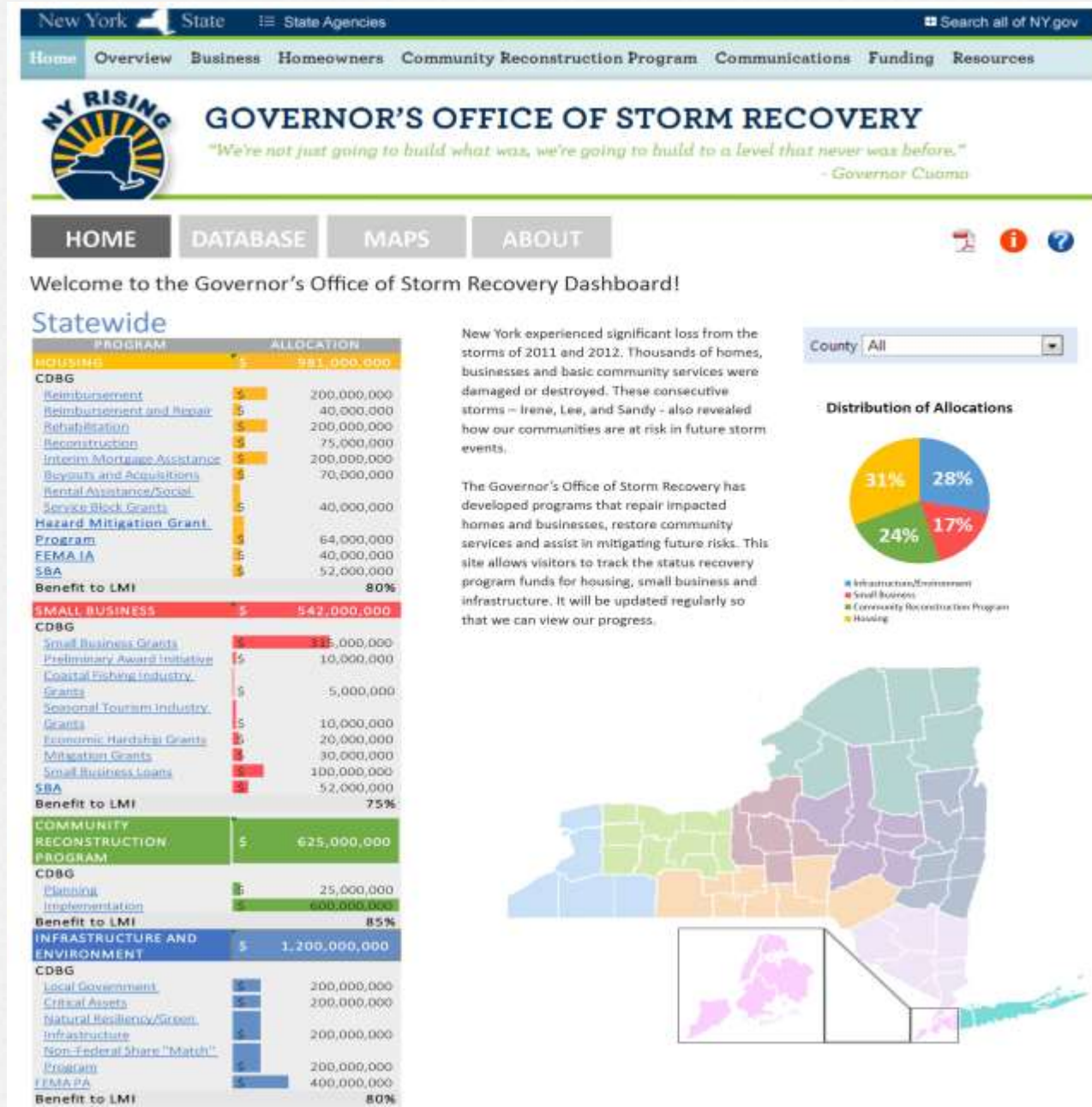
GCR Inc.

November 19, 2014

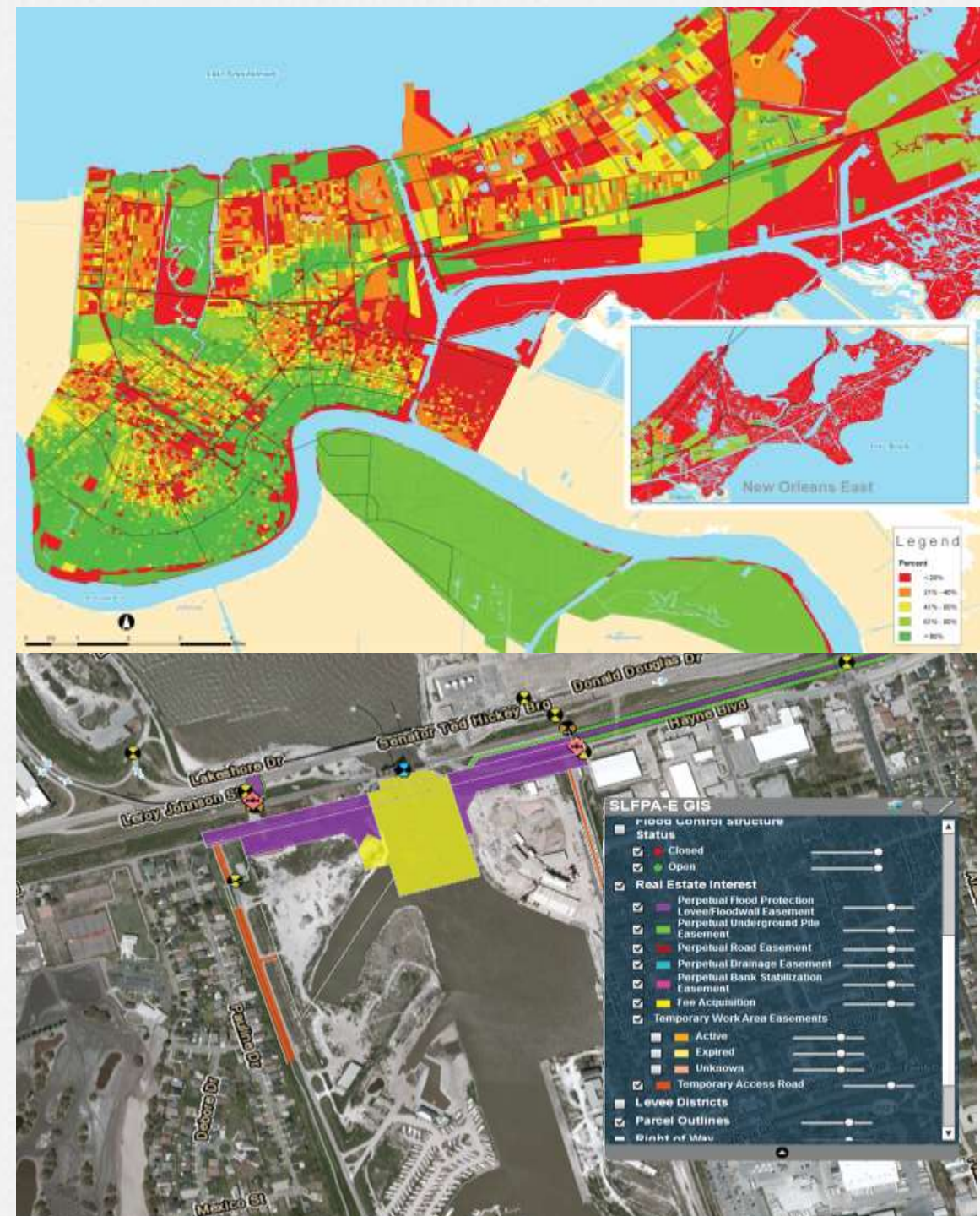


# Who is GCR?

- *Disaster Recovery and Community Planning*
  - Program Design
  - Program Implementation
  - Program Design
  - Community Engagement
  - Project management tool designed for disaster recovery



- *Management and Reporting*
  - Community Portal
  - Management & Reporting Dashboard
  - Grants Management
- *Assessment*
  - Unmet Needs Assessments
  - Asset Inventory
  - Market Analysis



# Impacts of Katrina and Rita (2005)

- **1,071 Lives lost**
- **1.2 million people displaced**
- **217,245 units of housing destroyed**
- **835 K-12 schools damaged; 40 destroyed**
- **10 Hospitals destroyed**
- **18,752 Businesses destroyed; 80,000 impacted**
- **240,000 jobs lost**
- **More than \$100 billion in uninsured losses**
- **100 square miles of coastal wetlands lost or destroyed**

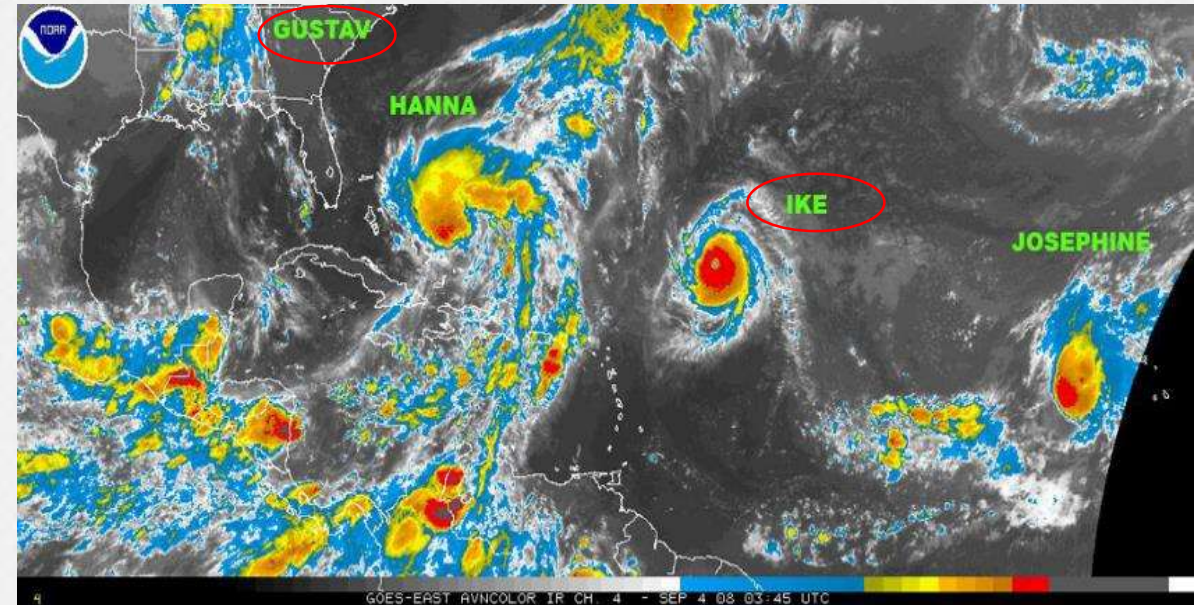






# Hurricanes Gustav & Ike (2008)

- Estimated \$20 billion in physical damage
- \$2.5 – 5 billion in economic activity loss
- 97,000 businesses experienced business interruption



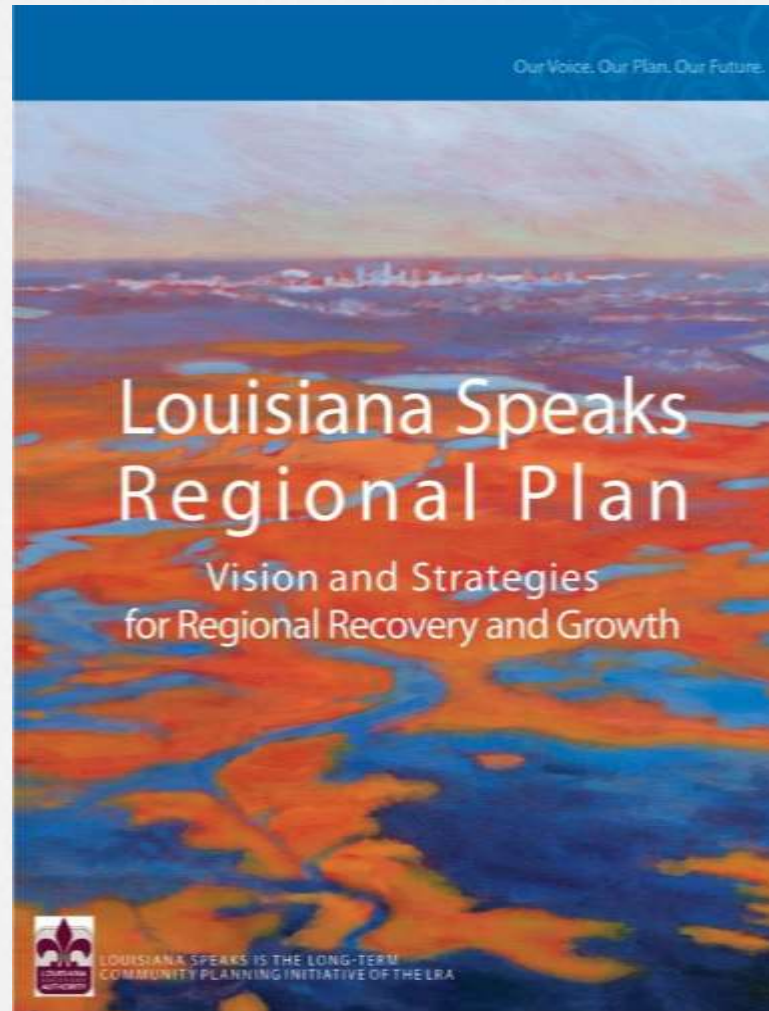
# BP Oil Spill (2010)

- Estimated \$2.5 billion loss to fisheries industry
- Fishermen sidelined from work
- Estimated \$23 billion in loss to tourism industry across Gulf Coast
- Loss of wetlands and continued environmental degradation
- Moratorium on oil rig development = losses to oil and gas industry



# Triage

# Long Term Recovery Planning



The screenshot shows the 'LOUISIANA SPEAKS LONG-TERM COMMUNITY RECOVERY PLANNING' website. It has a navigation bar with links: RECOVERY PROCESS, RECOVERY PROJECTS, PLANNING BY PARISH, PLANNING BY SECTOR, FUNDING OPPORTUNITIES, and IMPLEMENTATION. The main content area is titled 'PLANNING PROCESS FOR LOUISIANA LONG-TERM COMMUNITY RECOVERY' and includes a paragraph about the Parish Recovery Planning Tool. Below this is a diagram showing the flow from 'COMMUNITY PROGRESS' through a 'DISASTER EVENT' to 'RECOVERY PLANNING' and 'RECOVERY IMPLEMENTATION', leading back to 'COMMUNITY PROGRESS'. A sidebar on the left lists: OVERVIEW, LOUISIANA RECOVERY PLANNING, LOUISIANA SPEAKS, RECOVERY METHODOLOGY, RECOVERY PLANNING TOOLS, and PLANNING OPPORTUNITIES. The footer contains navigation links and a copyright notice for 2006.

Our Voice. Our Plan. Our Future.

## LOUISIANA SPEAKS LONG-TERM COMMUNITY RECOVERY PLANNING

RECOVERY PROCESS | RECOVERY PROJECTS | PLANNING BY PARISH | PLANNING BY SECTOR | FUNDING OPPORTUNITIES | IMPLEMENTATION

Click for Larger Version

**LOUISIANA SPEAKS  
LONG-TERM COMMUNITY RECOVERY PLANNING**

**PLANNING PROCESS FOR LOUISIANA  
LONG-TERM COMMUNITY RECOVERY**

This Parish Recovery Planning Tool offers a look at how Long-Term Community Recovery (LTCR) planning works and how it has been developed in Louisiana. Included in this section are overviews of recovery strategies development, a summary of planning tools — some of which have been developed in Louisiana in response to Hurricanes Katrina and Rita, and a look at Louisiana public and community input into LTCR planning.

**LOUISIANA LONG-TERM COMMUNITY RECOVERY PLANNING  
FACILITATES THE RETURN TO NORMAL COMMUNITY PROGRESS**

OVERVIEW  
LOUISIANA RECOVERY PLANNING  
LOUISIANA SPEAKS  
RECOVERY METHODOLOGY  
RECOVERY PLANNING TOOLS  
PLANNING OPPORTUNITIES

LOUISIANA HAS embarked upon the most ambitious recovery planning efforts the country has seen. Widespread damage caused by Hurricanes Katrina and Rita and multiple levee failures in New Orleans resulted in the worst natural disasters in U.S. history. More than 20 parishes are affected displacing over 1.4 million Louisiana residents across 50 states, many of whom have yet to return. More than 1,000 lives were lost; 217,000 homes and 18,000 businesses were damaged. Today, Louisiana faces the challenge of rebuilding one of the country's most historic oases, a host of treasured communities across southern Louisiana, and an economic and housing infrastructure that in some parishes has been totally wiped out. The return of small businesses, governmental facilities and services are critical to Louisiana's recovery. The restoration of acres of damaged or destroyed agricultural crops and fields as well as environmentally fragile waterways and wetlands that protect the Louisiana coast add to the recovery challenge facing the state. Ports, oil and gas drilling sites and shipping lanes that support energy and transportation needs for the country need to be restored as well.

Recovery Process | Recovery Projects | Planning by Parish | Planning by Sector | Funding Opportunities | Implementation

Homepage Copyright 2006

# Long Term Recovery Planning



# Business Recovery Assistance

**Direct assistance through loans, grants and technical to small businesses in order to restart, maintain operations, recover and grow after the devastating impacts of a natural disaster**

- **Bridge Loan Program**
- **Small Firm Loans and Grants**
- **Technical Assistance**
- **Business Response Center**



# Recovery Sectors Workforce Training



[Home](#) / [Students](#) / [Morgan Smith](#) / [Alumni](#) / [Faculty & Staff](#) / [Contact Us](#)

[ABOUT](#) [ADMISSIONS](#) [ACADEMICS](#) [STUDENT LIFE](#) [RESOURCES](#) [GIVE](#) [WORKFORCE DEVELOPMENT](#)



# Research Commercialization



# Tourism and Marketing

- Funds to jump start the damaged tourism and convention industry sectors
- The “Forever New Orleans” campaign is one of several funded by the Tourism Marketing Program.



# Outcomes

- **More than 4,000 businesses provided grants and loans**
- **Technical assistance provided to more than 3,500 businesses**
- **More than 6,000 workers trained and 2,786 placed in jobs**
- **Tourism Marketing dollars provided to 11 impacted parishes**
- **380 research projects published and approximately 90 technology transfers, patents and licenses**

**Investment**

# Property Investment and Innovation Fund

- Place-based property investment strategy
- Innovation Fund to fund start ups and other new business ventures





## PLANNING

PREPARE FOR A THRIVING FUTURE.



## FUNDING

CREATE PROJECTS THAT DELIVER RESULTS.



## TRAINING

LEARN MORE ABOUT RESILIENCE



## RESOURCES

MAKE YOUR COMMUNITY MORE

# Recovery Investment Linked to Job Growth

Project	Scope
LSU/VA Hospital	1 million square feet; \$2.5 billion
Federal City	193 acres; \$1 billion
New Orleans Bio-Innovation Center	65,000 square feet; \$47 million
Port of New Orleans expansion	\$582 million (short-term Capital Improvement Plan)
Second Line Stages Film Studio	90,000 square feet; \$32 million
New Orleans Cancer Research Consortium	150,000 square feet; \$102 million



LSU/VA Hospital Complex  
Photo: LSU Health Sciences Center



Federal City Proposed Plan  
Image: [www.nolafederalcity.com](http://www.nolafederalcity.com)



New Orleans BioInnovation Center model  
Image: [www.neworleansbio.com](http://www.neworleansbio.com)

# \$30 Billion in Improvements

Project	Committed
VA Hospital	\$1,300,000,000
CDBG Community Planning	\$450,560,000
Flood Protection	\$15,000,000,000
FEMA Public Assistance	\$2,138,503,100
Recovery and Reinvestment Act (ARRA)	\$92,000,000
Road Home	\$4,122,059,000
Low Income Housing Tax Credits (equity)	\$1,168,400,000
New Markets Tax Credits	\$998,500,000
Transportation/Streetcars	\$325,000,000
Coastal Protection and Restoration Authority (CPRA)	\$194,000,000
New Orleans Public Schools	\$1,800,000,000
Iberville Redevelopment	\$1,000,000,000
Medical Center of Louisiana	\$1,200,000,000
Total	\$30,000,000,000

# GREATER NEW ORLEANS HURRICANE AND STORM DAMAGE RISK REDUCTION SYSTEM (HSDRRS)

Status - June 2010



US Army Corps of Engineers



# Recent Planning Efforts



# ProsperityNOLA



*A Plan to Drive Economic Growth for 2018*

creative digital media



**CREATIVE  
DIGITAL MEDIA**

bioinnovation & health services



**BIOINNOVATION &  
HEALTH SERVICES**

transportation, trade & logistics



**TRANSPORTATION,  
TRADE & LOGISTICS**

sustainable industries



**SUSTAINABLE  
INDUSTRIES**

advanced manufacturing



**ADVANCED  
MANUFACTURING**

# RESTORE Act and Coastal Restoration



# Knowledge Transfer Industry



# Thank you!

**Questions?**

Robin Keegan  
rkeegan@gcrincorporated.com