

# Denver Regional Equity Atlas

An online mapping application for interacting  
with data in our region



**DRCOG**

DENVER REGIONAL COUNCIL OF GOVERNMENTS

*We make life better!*

**SCI**

SUSTAINABLE COMMUNITIES INITIATIVE

DENVER REGIONAL COUNCIL OF GOVERNMENTS

# Sustainable Communities Initiative



Goal: Align investments, programs and policies to maximize the benefits that result from the region's investment in transit

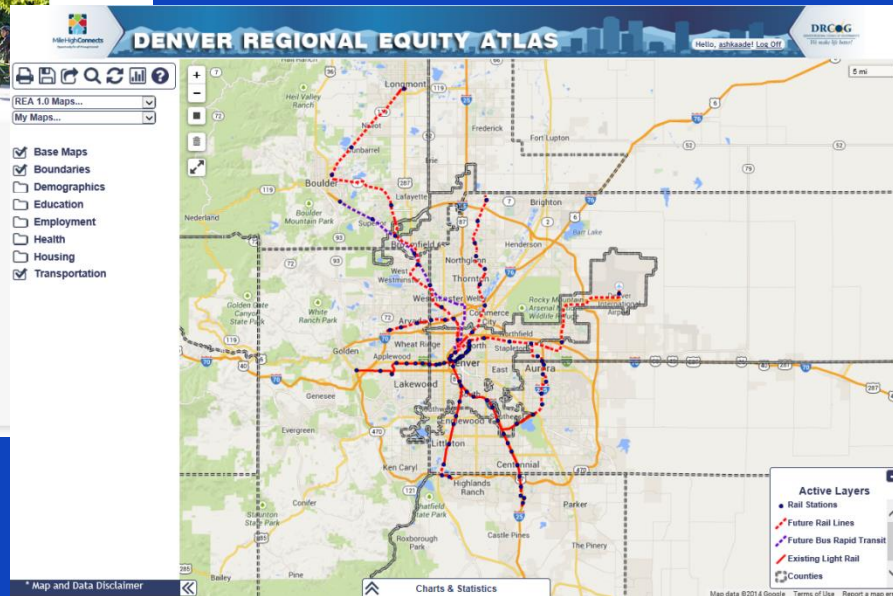
# Empowering stakeholders

- ◆ Access to information
- ◆ Understanding connections
- ◆ Making the case

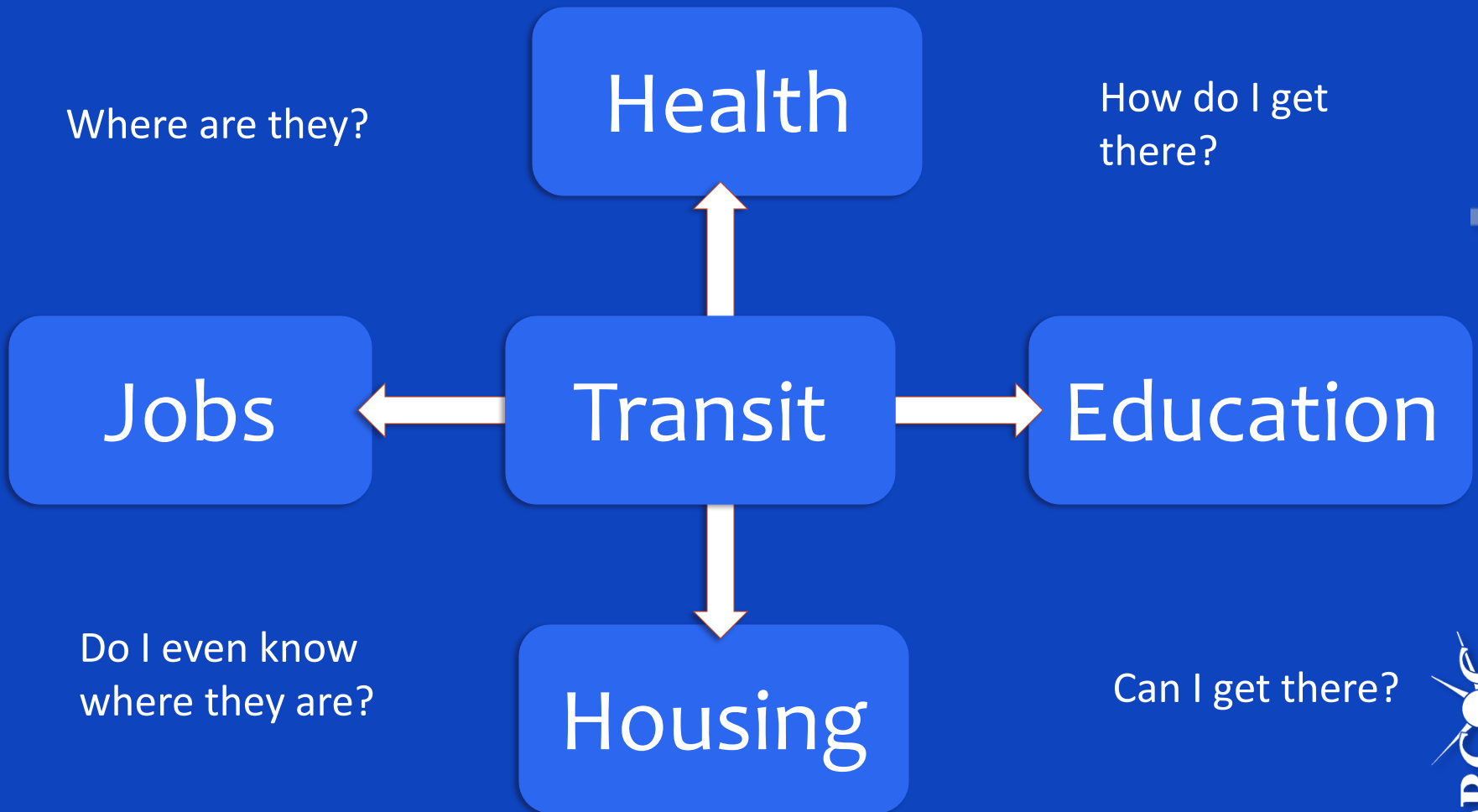
The screenshot shows the 'Create Account' section of the Denver Regional Equity Atlas website. The page header includes the title 'DENVER REGIONAL EQUITY ATLAS' and navigation links for 'MAP', 'BACKGROUND', 'TOPIC AREAS', 'FUNDING', 'AUDIENCE', 'CONTRIBUTORS', 'HELP', and 'CONTACT'. A 'Register or Log In' link is also present. Below the header are three images: a train, a person on a bicycle, and a person walking. The registration form includes fields for 'Username', 'Role / Title', 'Password', 'Organization', 'Email', and 'Confirm password'. There is a 'Register' button and a 'Privacy & Terms' link. A 'My Maps...' dropdown menu is visible, and a list of active layers is shown on the right side of the form.

**Active Layers**

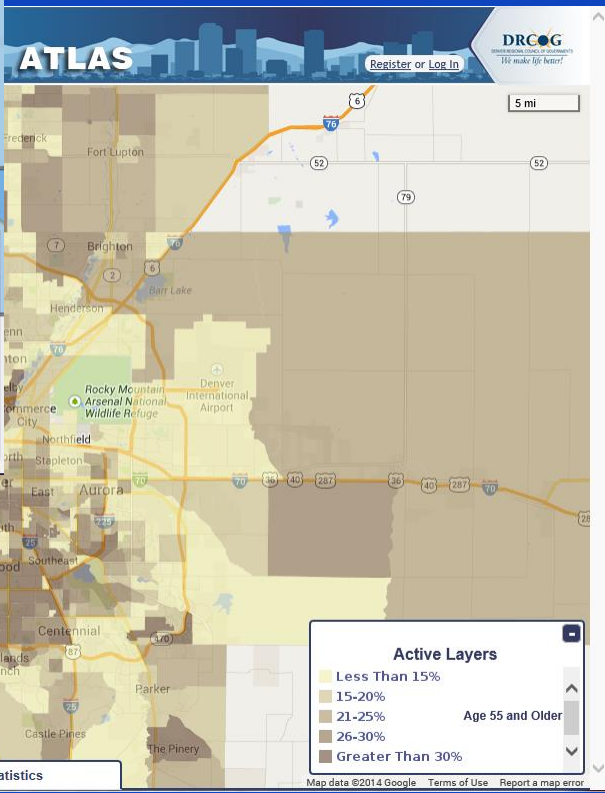
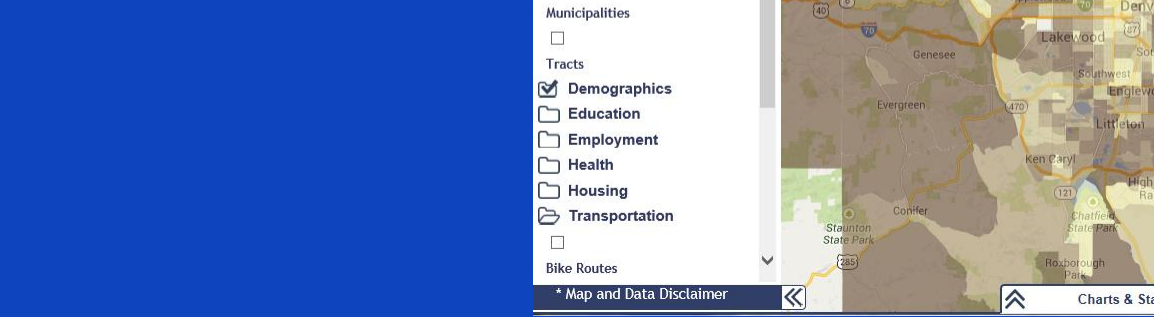
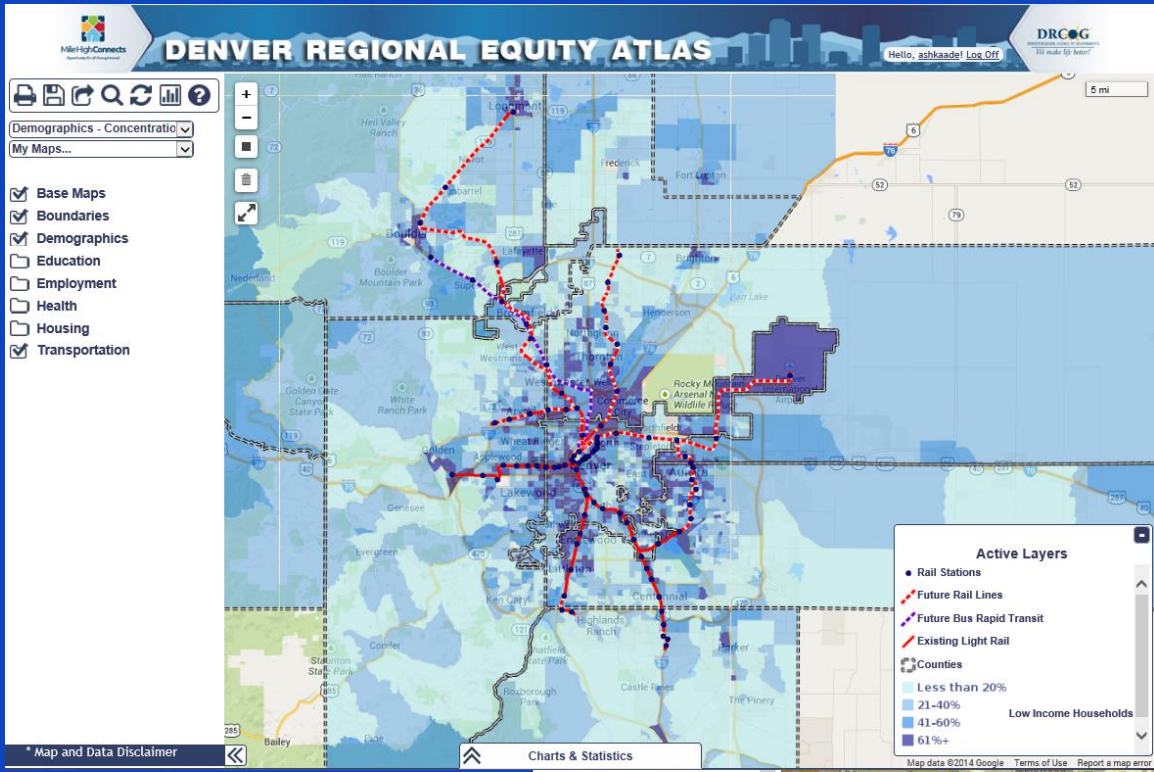
- Base Maps
- Boundaries
- Demographics
- Education
- Employment
- Health
- Housing
- Transportation



# Understanding connections



# Making the case



# Fostering regional collaboration



# Questions

Ashley Kaade, DRCOG

Planner II: Stakeholder Engagement

[akaade@drcog.org](mailto:akaade@drcog.org)

303-480-6781

[www.denverregionalequityatlas.org](http://www.denverregionalequityatlas.org)

