

- The Regional Blueprint for Sustainability is the result of a local planning process designed to guide the economic growth of an area. The information gathered during the process was then utilized in conjunction with forming the NENEDD CEDS.

Committees:

Economic Development

- Workforce
- Tourism

Education

Environmental

Housing

Transportation



Economic Strengths



Healthcare Facilities



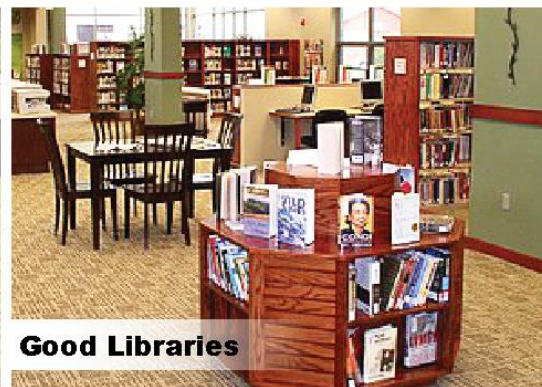
Connectivity



Agriculture



Ambulance & Fire Services



Good Libraries

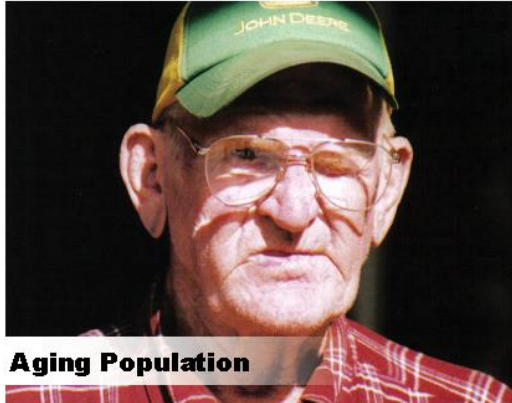


Wind Energy



Regional Teamwork

Economic Opportunities



Aging Population



Quality of jobs to bring graduates back



Lack of technology infrastructure



Adequate & quality housing



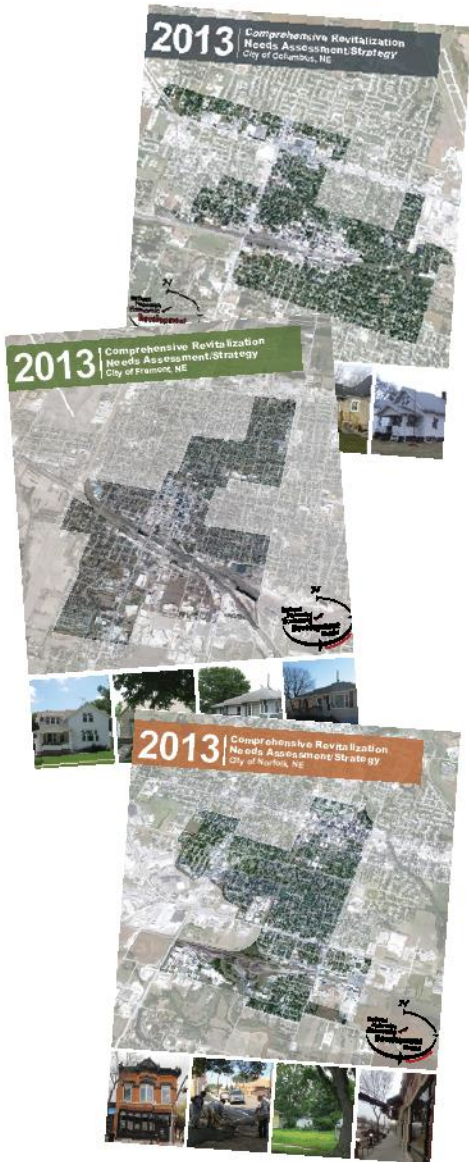
Four lane highway



Sustainable Agriculture



Limited rail infrastructure



Assist with the development of long-range plans



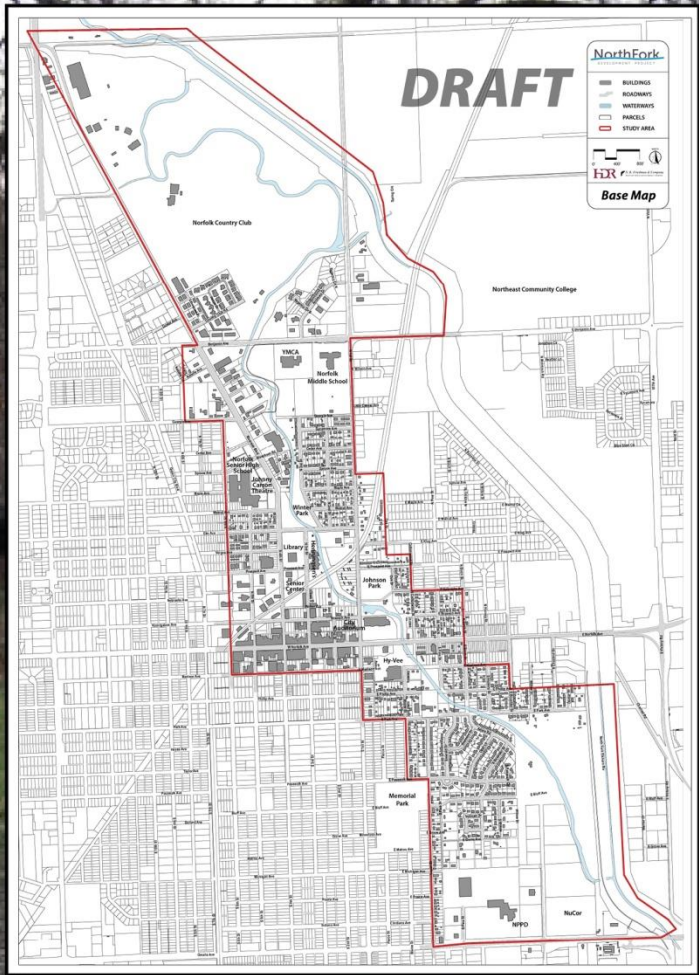
Assist communities with marketing & recruitment of new business/industry.



Coordinate entrepreneurial training programs for existing & new businesses.



39th Avenue Industrial
& Storage, Inc.
Columbus, Nebraska



City of Norfolk
Future Trails & Connectivity
Proposed NorthFork Riverwalk
www.northforkne.com

WYOMING

SOUTH DAKOTA

MINNESOTA

IOWA

MO

COLORADO

KANSAS

-  Wineries
-  NE Attractions
-  Private Shannon Trail Communities
-  Cowboy Trail
-  Lewis & Clark Trail
-  Outlaw Trail
-  Oyate Trail (SD)
-  Interstate
-  US Highway
-  State Highway
-  Communities

WINERIES

- 1 Alley Winery - South Sioux City, NE
- 2 Cuthills Vineyard - Pierce, NE
- 3 Nissen Winery - Hartington, NE
- 4 Silvercreek Hill Vineyards & Winery - Tekamah, NE

NEBRASKA ATTRACTIONS

- 1 Niobrara State Park www.stateparks.com/niobrara.html
- 2 Ashfall State Historical Park <http://ashfall.unl.edu>
- 3 Plainview Clown Doll Museum www.klowndollmuseum.com
- 4 Neligh Mills State Historical Site www.nebraskahistory.org/sites/mill
- 5 Elkhorn Valley Museum www.elkhornvalleymuseum.org
- 6 Andrew Jackson Higgins Museum www.higginsmemorial.com
- 7 Fremont Dinner Train www.dinnertrain.net
- 8 Fort Atkinson State Historical Park www.fortatkinsononline.org
- 9 DeSoto National Wildlife Refuge www.fws.gov/midwest/desoto/
- 10 Woodland Trails Art Center www.woodlandtrailsart.com
- 11 Ponca State Park www.stateparks.com/ponca.html
- 12 St. James Market Place www.stjamesmarketplace.com
- Corp of Discovery Welcome Center www.corpssoftiscoveywelcomecenter.org
- 14 Sportsman Resort RV Park
- 15 Old Baldy - The Tower www.lewisandclarktrail.com/section2/sdcities/FortRandallArea/tower.htm
- 16 Cedar County Museum www.nebraskabeautiful.com/northeast-nebraska-tourism/cedar-county-historical-museum-hartington-nebraska.html
- 17 John G. Neihardt State Historical Site www.neihardt.com
- 18 Dead Timber State Recreation Area http://outdoonebraska.ne.gov/parks/guides/parksearch/showpark.asp?Area_No=59
- 19 Musbach Museum Call for an appointment (402) 664-3085





City of Norfolk
Housing Agency
Paint • Storm windows

Contact Information

- Northeast Nebraska Economic Development District
- 111 South 1st Street, Norfolk, NE 68701
- 402-379-1150
- www.nenedd.org

