

LINKING COMMUNITIES THROUGH TRANSPORTATION OPTIONS

Omaha, Nebraska

May 15-16, 2014

planET A Regional Partnership of
East Tennessee Communities

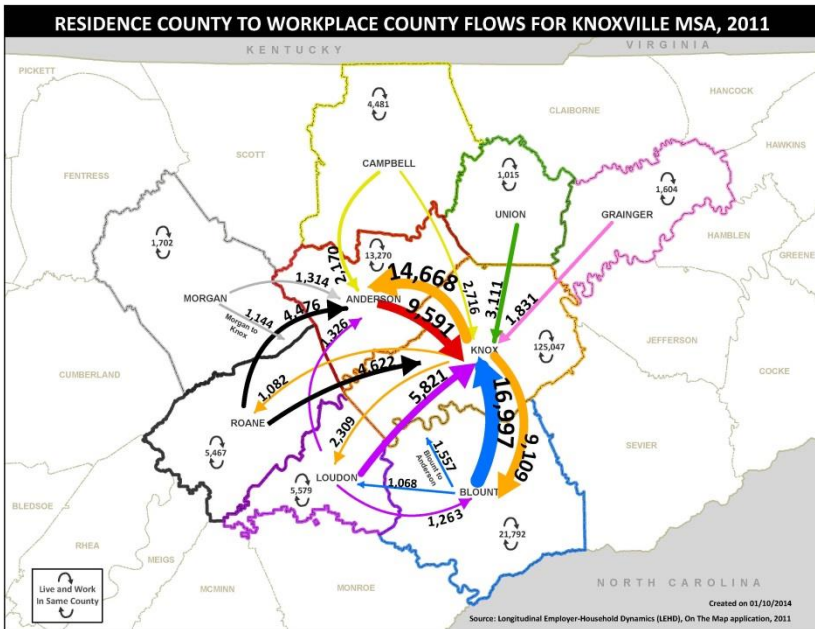


EAST TENNESSEE
QUALITY GROWTH
PROGRESS THROUGH INFORMED CHOICES

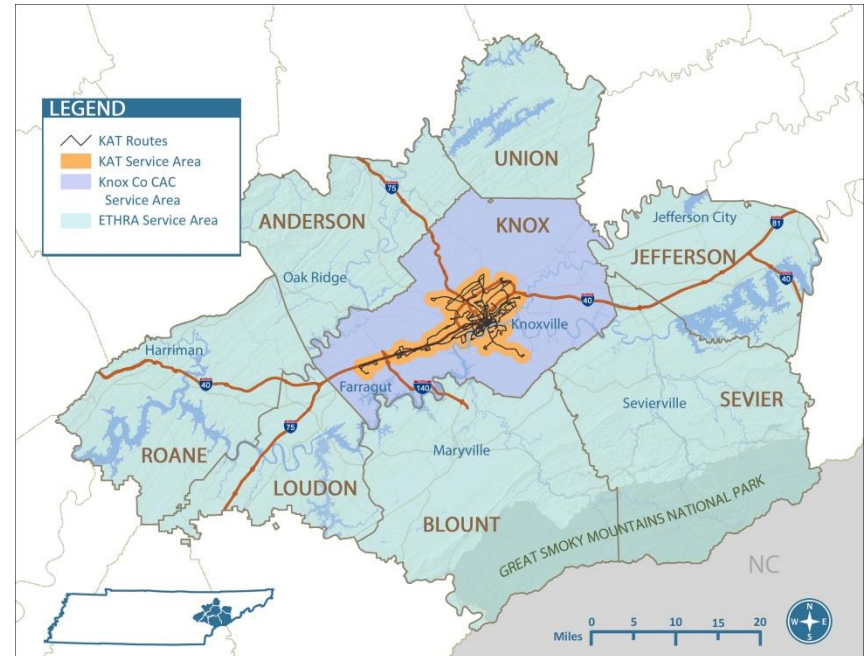


Regional Commuting Patterns

Daily Commuting Patterns



Service Area Public Transportation



Commuting in the Region

Average cost to commute represents 32% of household income.

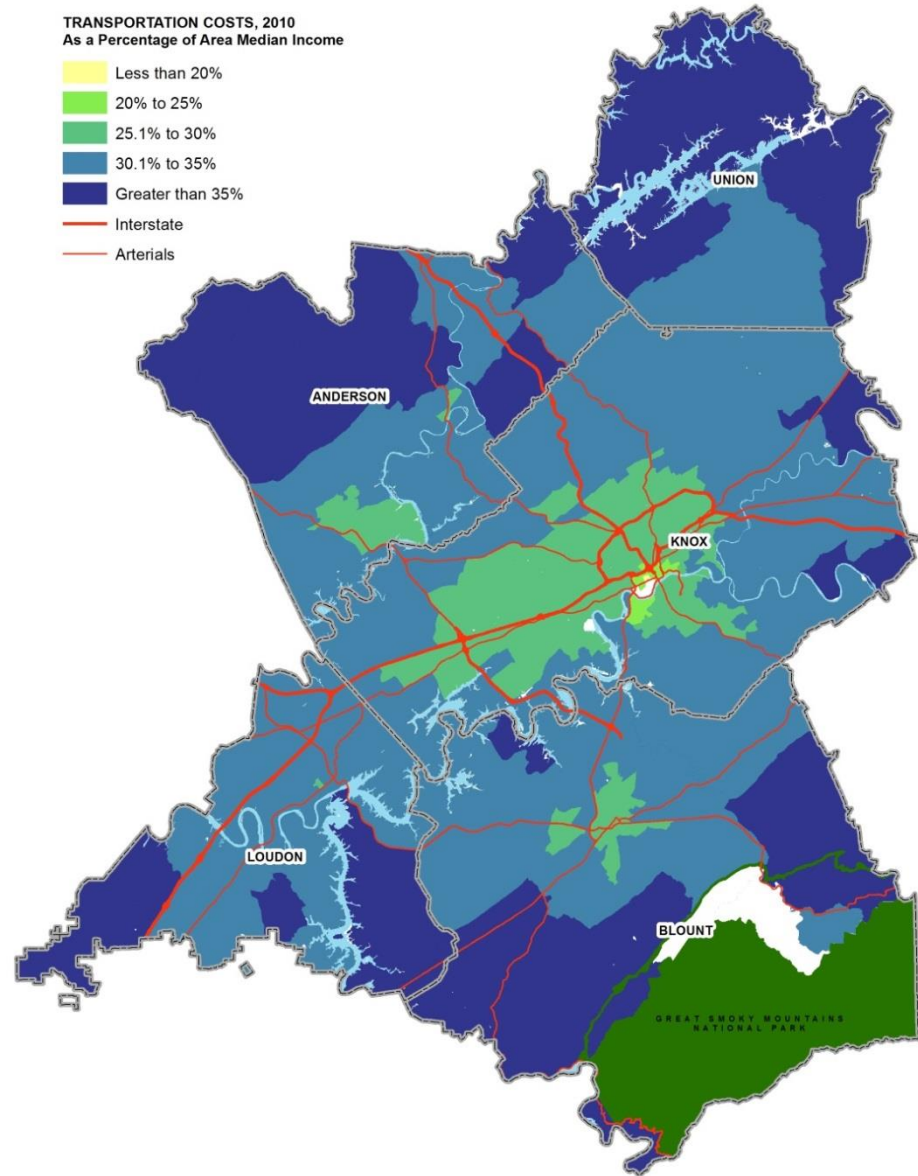
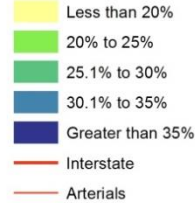
Traffic congestion is highest in Blount and Knox Counties.

Fixed – Route transit is limited to the City of Knoxville.

Only one in 5 streets in the region has sidewalks for pedestrian traffic.

Low-density development in the region does not support public transit.

TRANSPORTATION COSTS, 2010
As a Percentage of Area Median Income



Blount County at a Glance

Population – 124,177

Growth Increase –
16.9% (2010-2012 census)

Percent of Residents –
16.8% living in poverty

Percent of residents –
15.6% 65 or older

Percent of Residents –
7.9% 65+ living in poverty



Capacity Building Projects

Blount County Senior Action Council

Provide Transportation Options to Seniors 60+ who do not drive

- Essential Trips – Medical/Grocery
- Door-to-Door
- Scheduled/Reliable

Use local resources available

- Volunteers with Community Spirit
- Faith-Based Organizations
- Community Organizations
- Community Connections

Work Plan

- Community Awareness 7/2013
- Recruit Volunteers 9/2013
- Screen and Train Drivers 9/2013
- Launch Service 10/2013



Neighbors driving Neighbors



Celebrates 1000th Ride – April 9, 2014

Project Progress

Grant Contribution: \$4995

Members: 64

Average age: 78

Drivers: 43

Average age: 66

The SMiles program will also be presented at a workshop for the n4a (National Area Agency on Aging Association) July Conference in Dallas.

