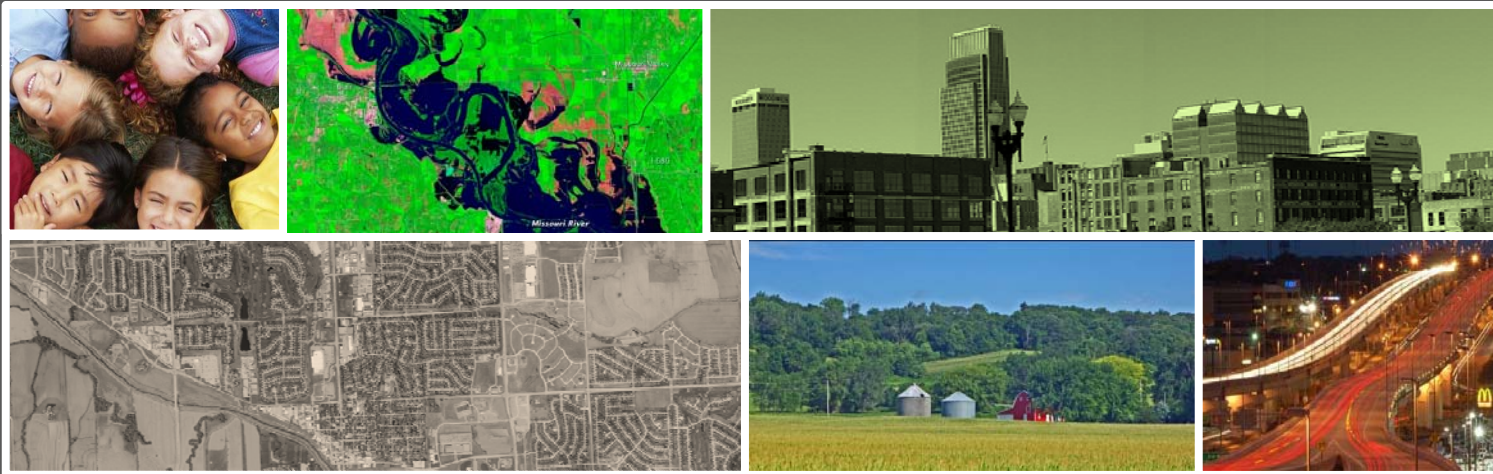


Heartland 2050

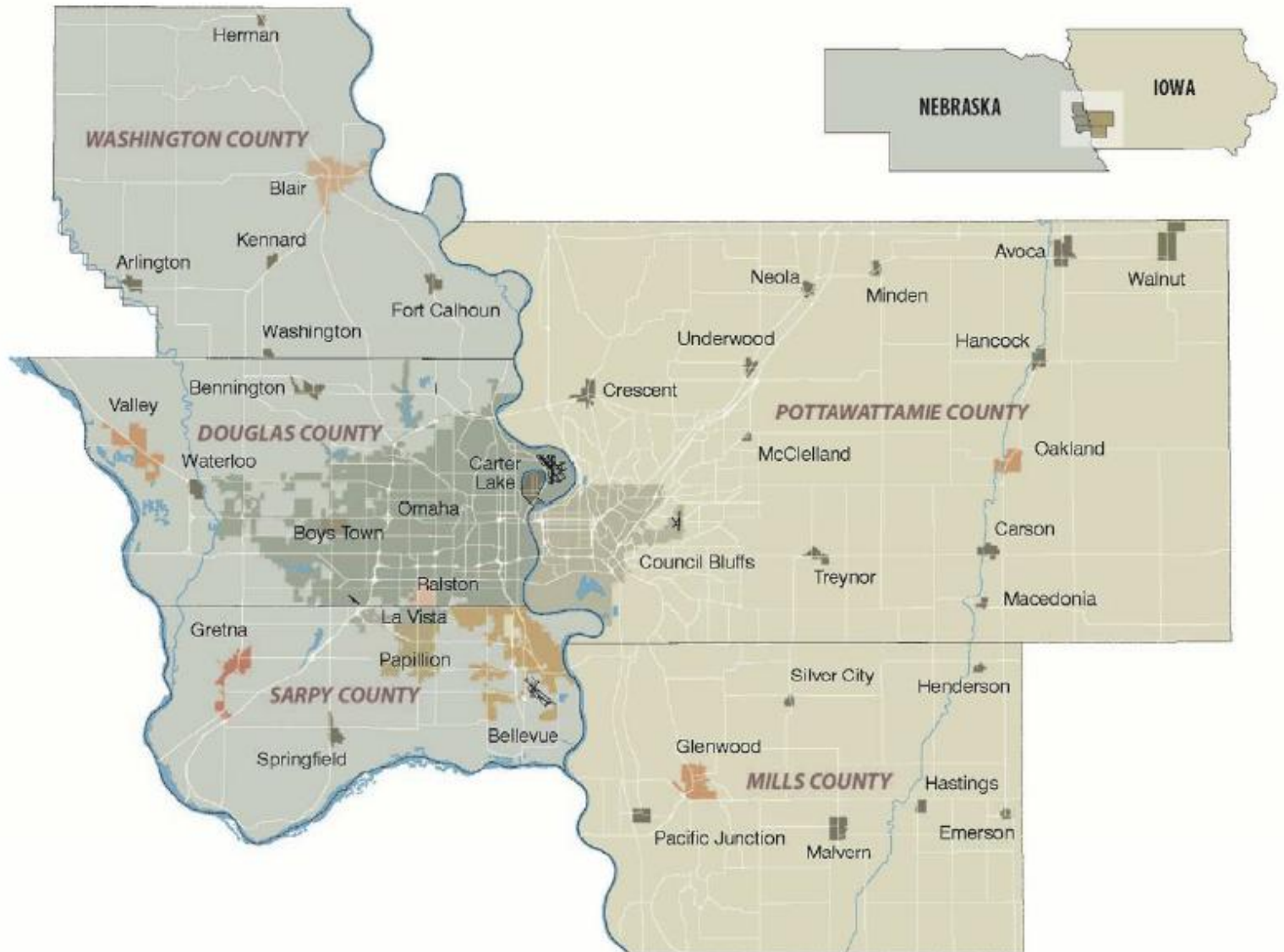


NADO Conference

May 15th, 2014



MAPA Region



MAPA ACTIVITIES

- **Transportation Planning**
- **Data and Mapping Services**
- **Community & Economic Development**
 - Grant Assistance (CDBG, FEMA, etc.)
 - Planning and Zoning
 - Economic Development District (EDD)
 - Revolving Loan Fund
- **“Everything Else!”**
 - Heartland 2050
 - Solid Waste Plan
 - NIROC Aerial Photos

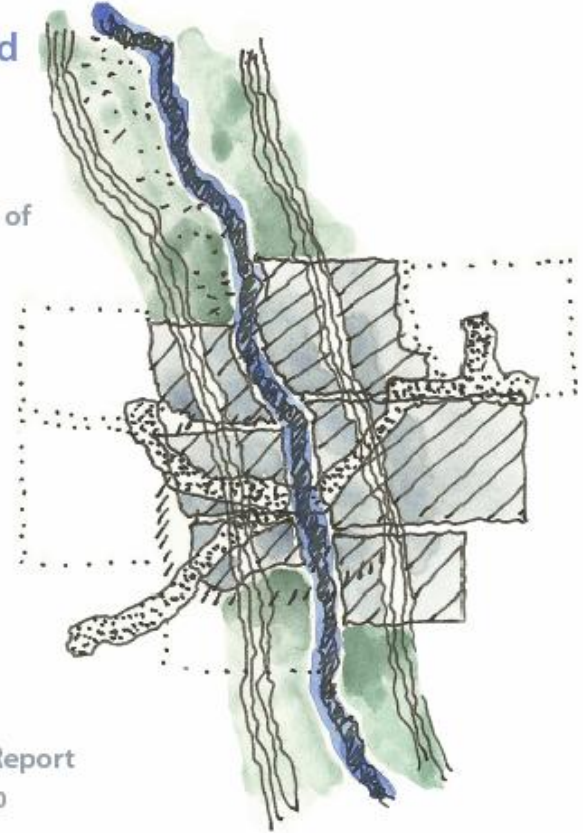
Assessment of readiness

In 2010, MAPA undertook an assessment of readiness to engage in a regional visioning process. This assessment engaged many of the counties in the region, as well as cities and special purpose districts.

It resulted in a decision to apply for a planning grant through HUD.

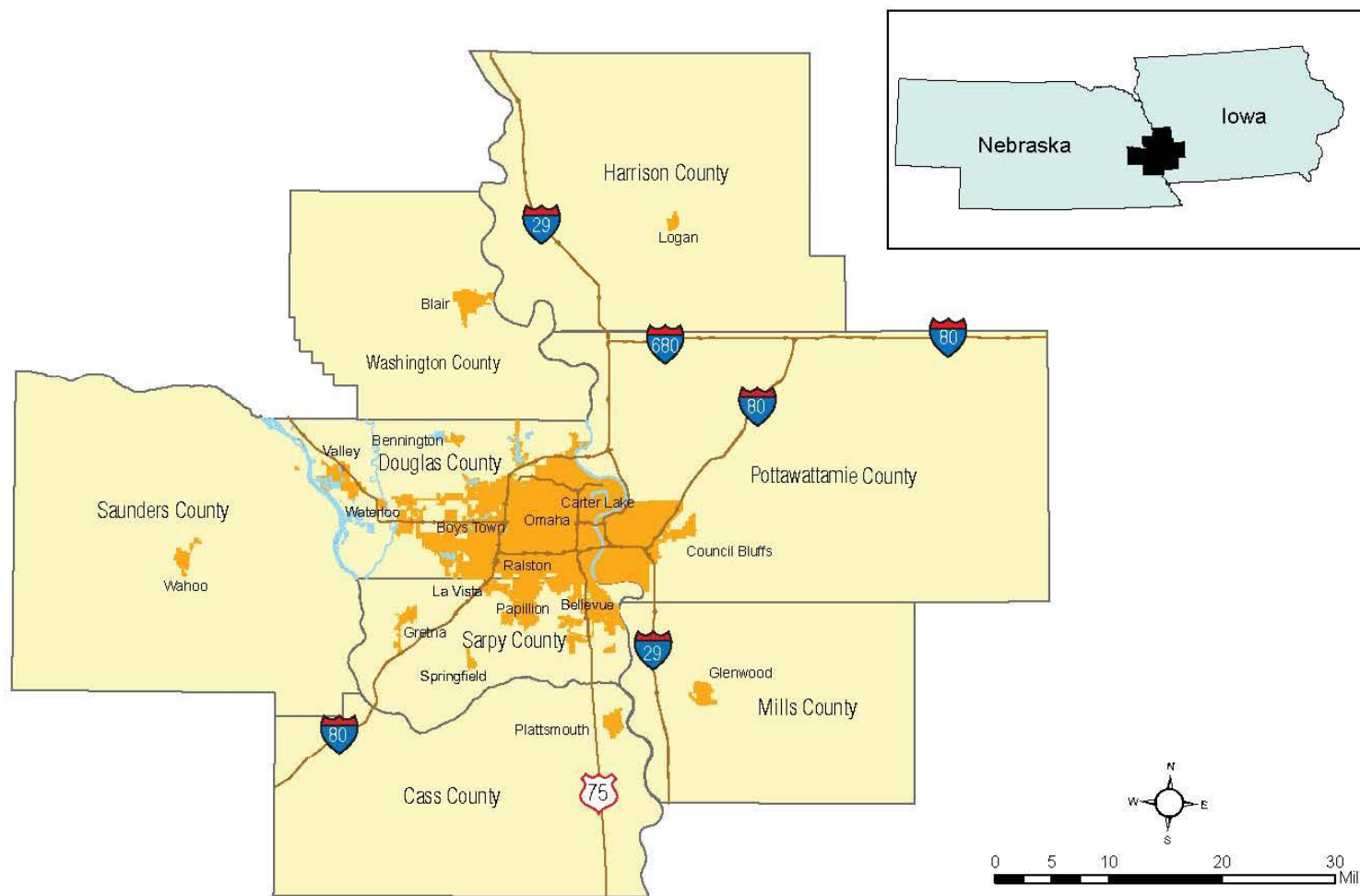
MAPA
Heartland
Vision
2050

Assessment of
Regional
Readiness



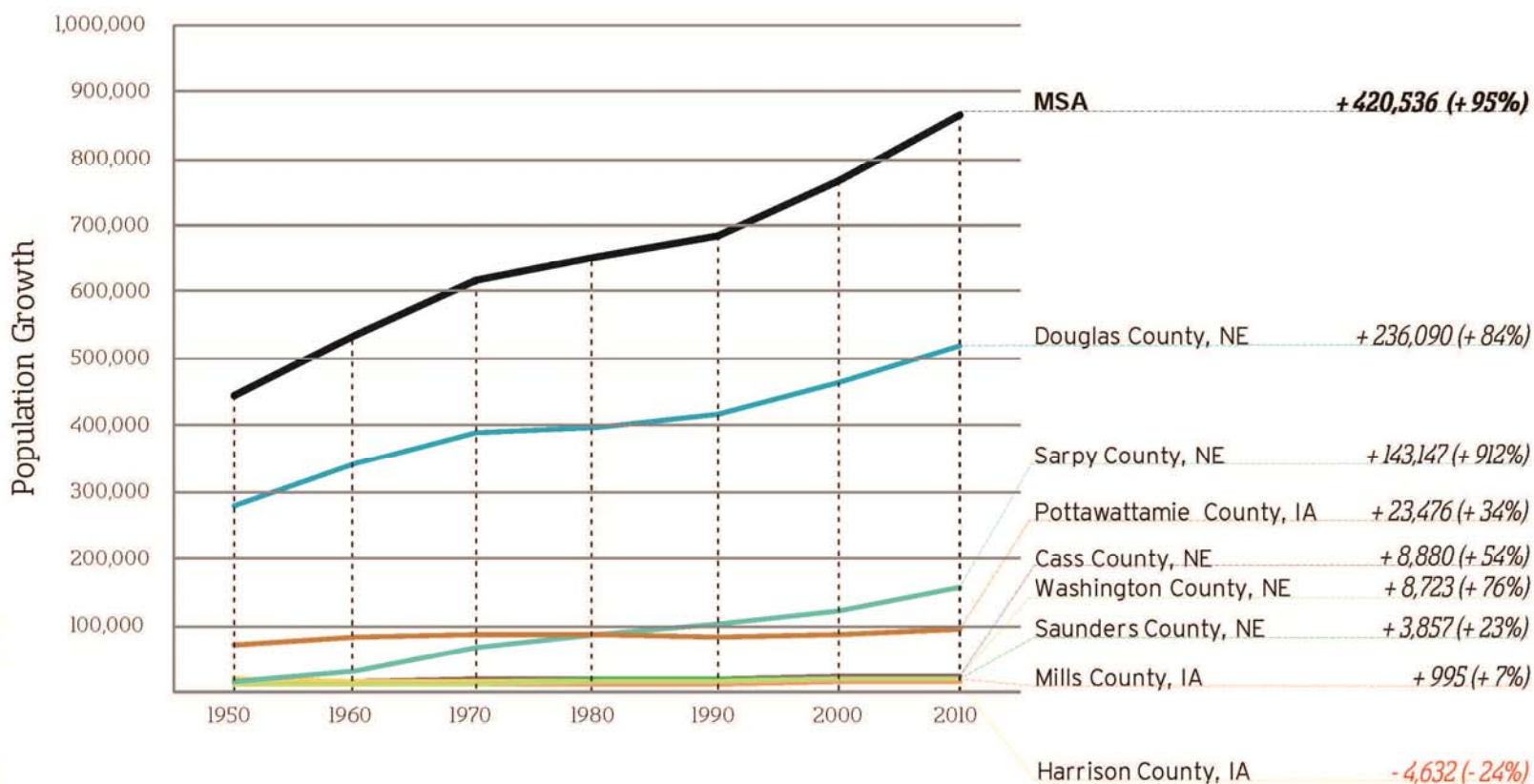
Final Draft Report
August 23, 2010

The region



The population is growing...

Total Population Growth



Steady future growth?

Population projections through 2050

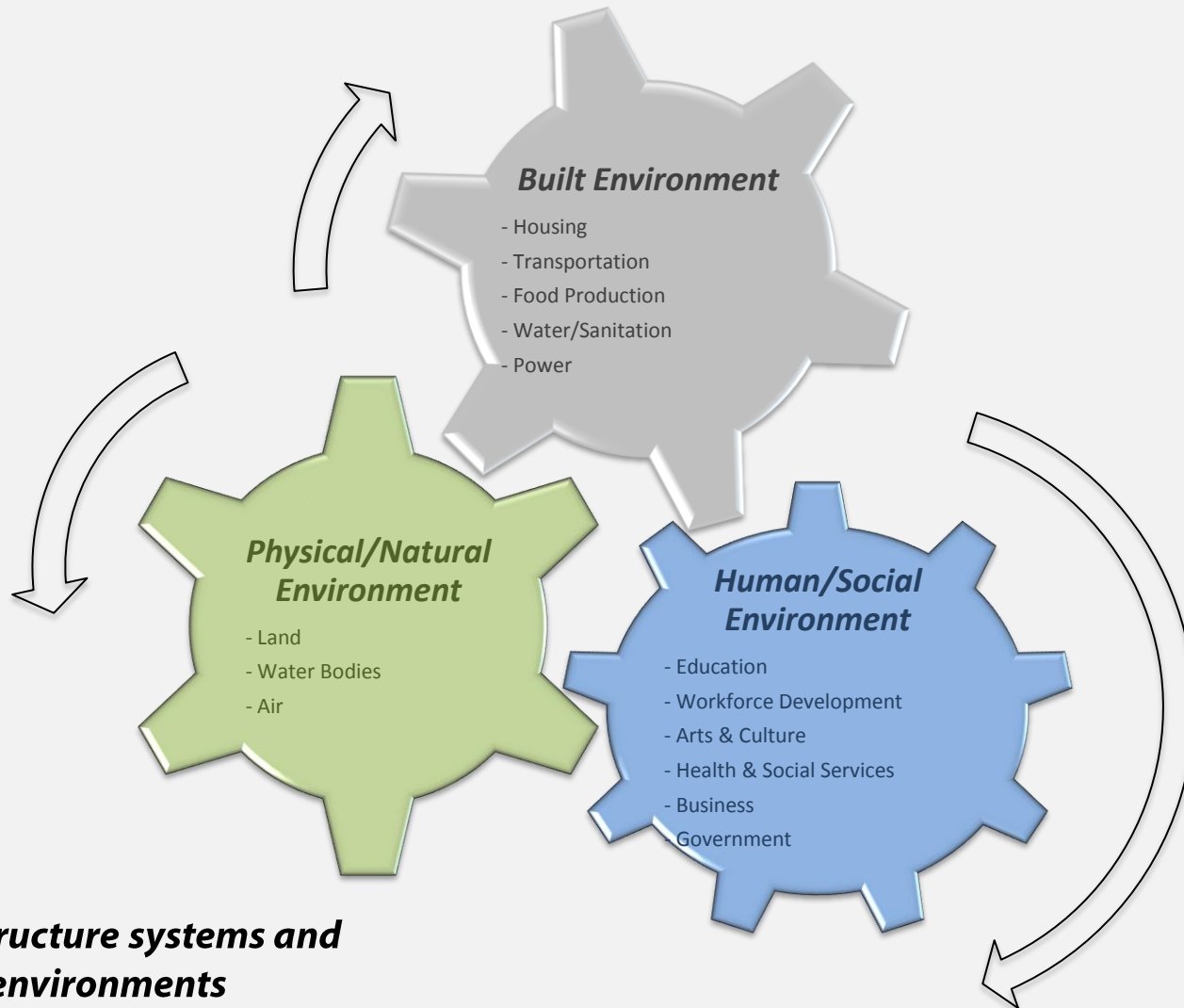
Total Population, All Counties, 2000 to 2050

Counties	2000	2005	2010	2015	2020	2025	2030	2035	2040	2045	2050
Core Counties											
Douglas	463,585	486,929	511,227	532,354	550,918	567,702	583,538	599,274	615,742	633,724	653,888
Sarpy	122,595	139,371	156,696	174,201	191,540	208,441	224,709	240,236	254,997	269,023	282,393
Suburban Counties											
Nebraska Counties											
Burt	7,791	7,455	7,240	7,207	7,320	7,550	7,885	8,331	8,897	9,586	10,396
Cass	24,334	25,734	27,733	30,037	32,600	35,385	38,381	41,601	45,060	48,764	52,712
Dodge	36,160	36,078	36,176	36,625	37,367	38,377	39,673	41,296	43,294	45,708	48,565
Otoe	15,396	15,509	15,704	16,005	16,399	16,868	17,414	18,054	18,808	19,694	20,722
Saunders	19,830	20,458	21,220	22,525	24,306	26,500	29,084	32,072	35,487	39,348	43,661
Washington	18,780	19,772	21,235	23,053	25,140	27,460	30,024	32,860	35,994	39,439	43,203
Iowa Counties											
Fremont	8,010	7,759	7,541	7,474	7,546	7,734	8,028	8,429	8,943	9,573	10,317
Harrison	15,666	15,884	16,242	16,752	17,385	18,099	18,879	19,735	20,686	21,750	22,941
Mills	14,547	15,284	16,213	17,164	18,100	18,999	19,879	20,783	21,752	22,816	23,990
Pottawattamie	87,704	89,738	92,378	95,111	97,943	100,850	103,872	107,104	110,663	114,651	119,143
Core Counties Total	586,180	626,300	667,923	706,555	742,458	776,143	808,247	839,510	870,739	902,747	936,282
Suburban Counties Total	248,218	253,671	261,682	271,954	284,105	297,820	313,118	330,265	349,583	371,328	395,652
Grand Total All Counties	834,398	879,971	929,606	978,509	1,026,563	1,073,962	1,121,365	1,169,775	1,220,322	1,274,075	1,331,933

Source: UNL BBR 2007

HEARTLAND 2050

A SYSTEMS APPROACH



***Regional infrastructure systems and
their operating environments***





Your chance to shape our region's future!

[Click here for expanded information about the scenarios.](#)

Heartland 2050 - MetroQuest

Progress:



Compare Yourself



Heartland 2050

Creating a long-term, regional vision for our future

WELCOME



Growing Responsibly. Together.

By 2050, our region will have more than 360,000 new residents and 150,000 new jobs... and how we grow matters!

Heartland 2050 is an unprecedented effort to develop a vision built upon our core values. We have the opportunity to define what kind of region we want to be forty years from now. It's an opportunity to shape our destiny, to create a regional vision in harmony with our people, places and resources.

What we're not?

Heartland 2050 will not make rules, laws or usurp local land use power. It will not commit jurisdictions to courses of action. Rather, it will foster a united, collaborative, and strategic approach to managing growth that maximizes public investment and helps our region excel well into the 21st century.



help

[Click here to begin](#)

2

PRIORITIES

3

SCENARIOS

4

STRATEGIES

5

STAY INVOLVED

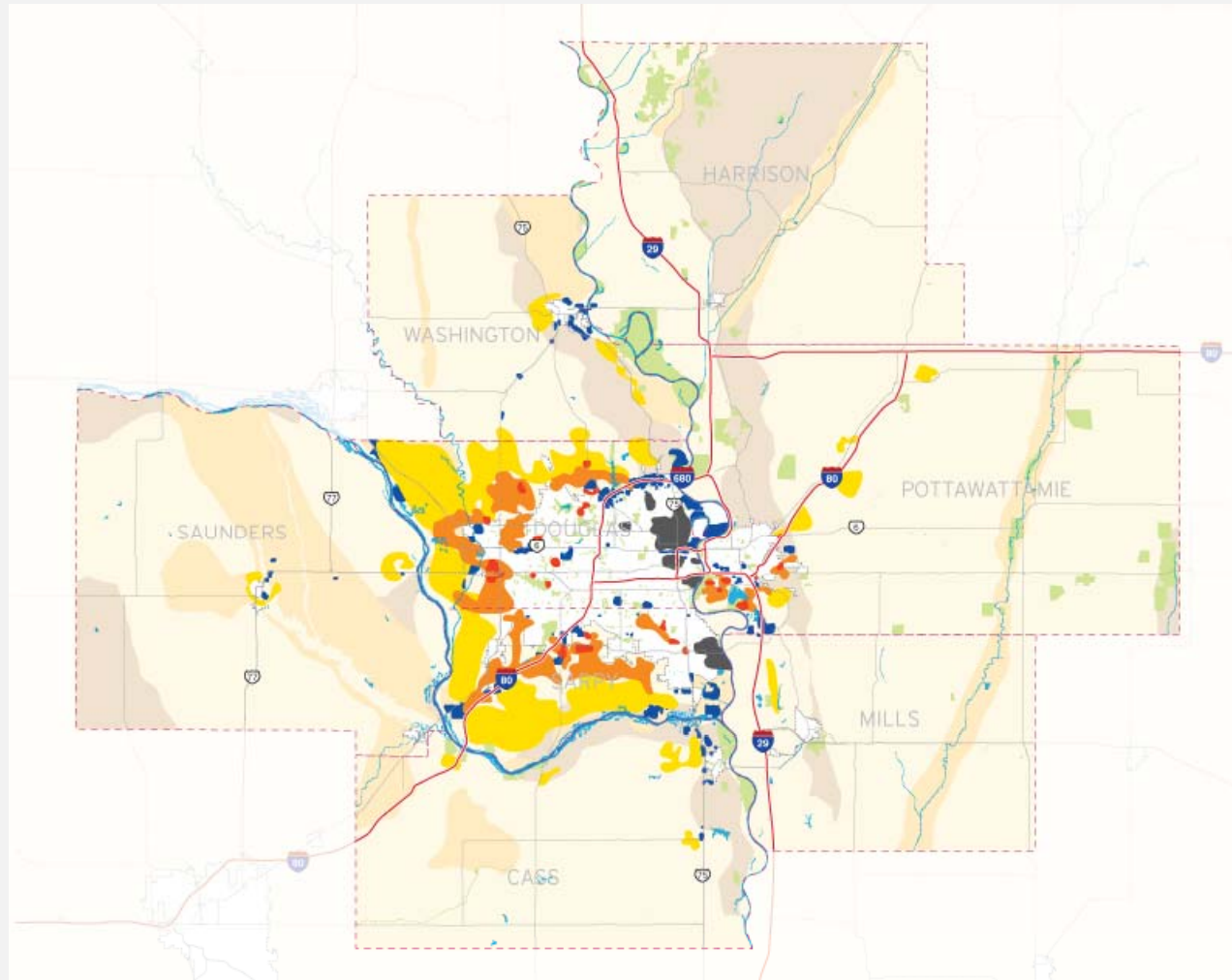
Share



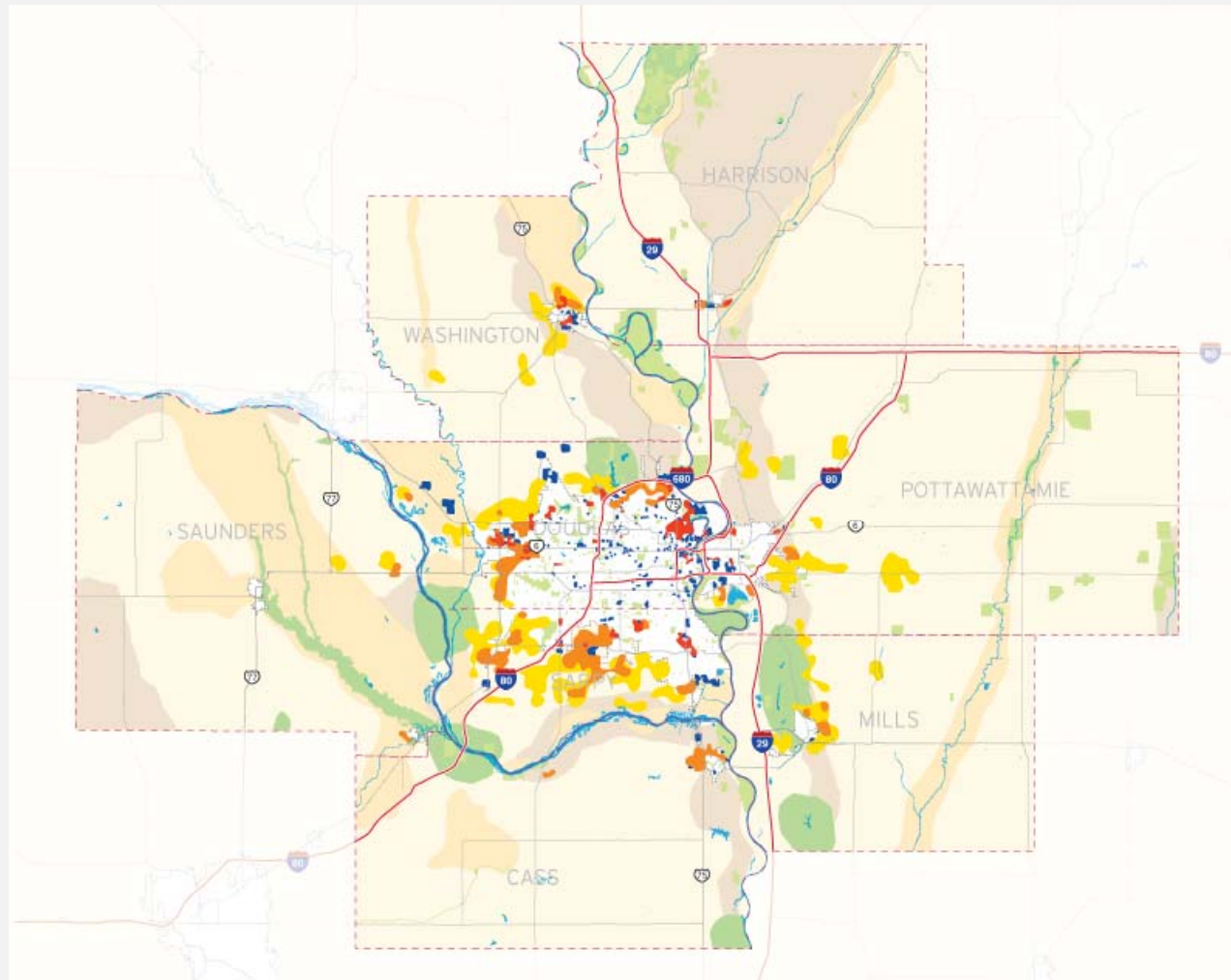
Take the survey above and tell us what you think.

We want your input on how the region should grow! This is your chance to review four potential growth scenarios for the region and let us know.

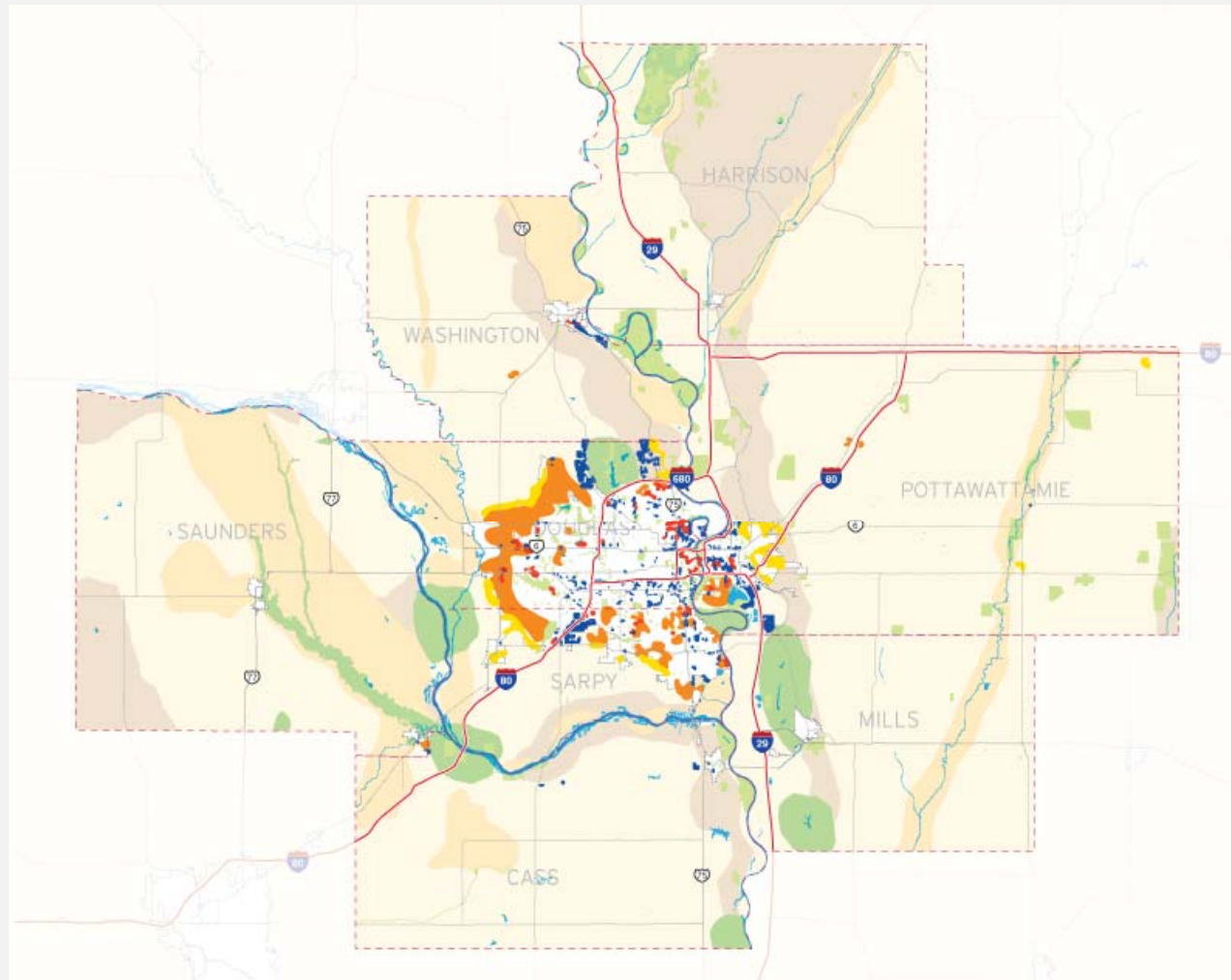
Scenario A: Trends



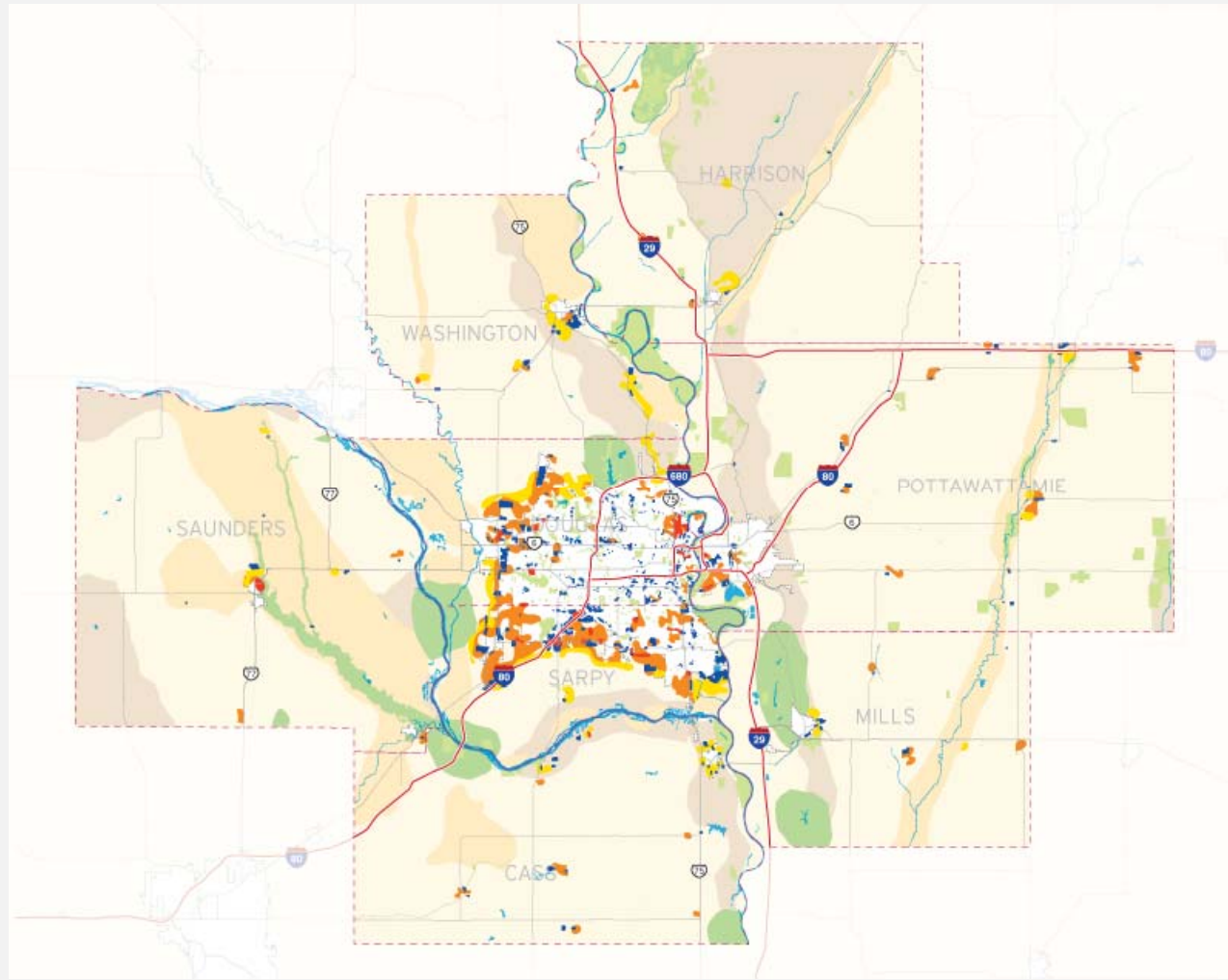
Scenario B: Workshop Feedback



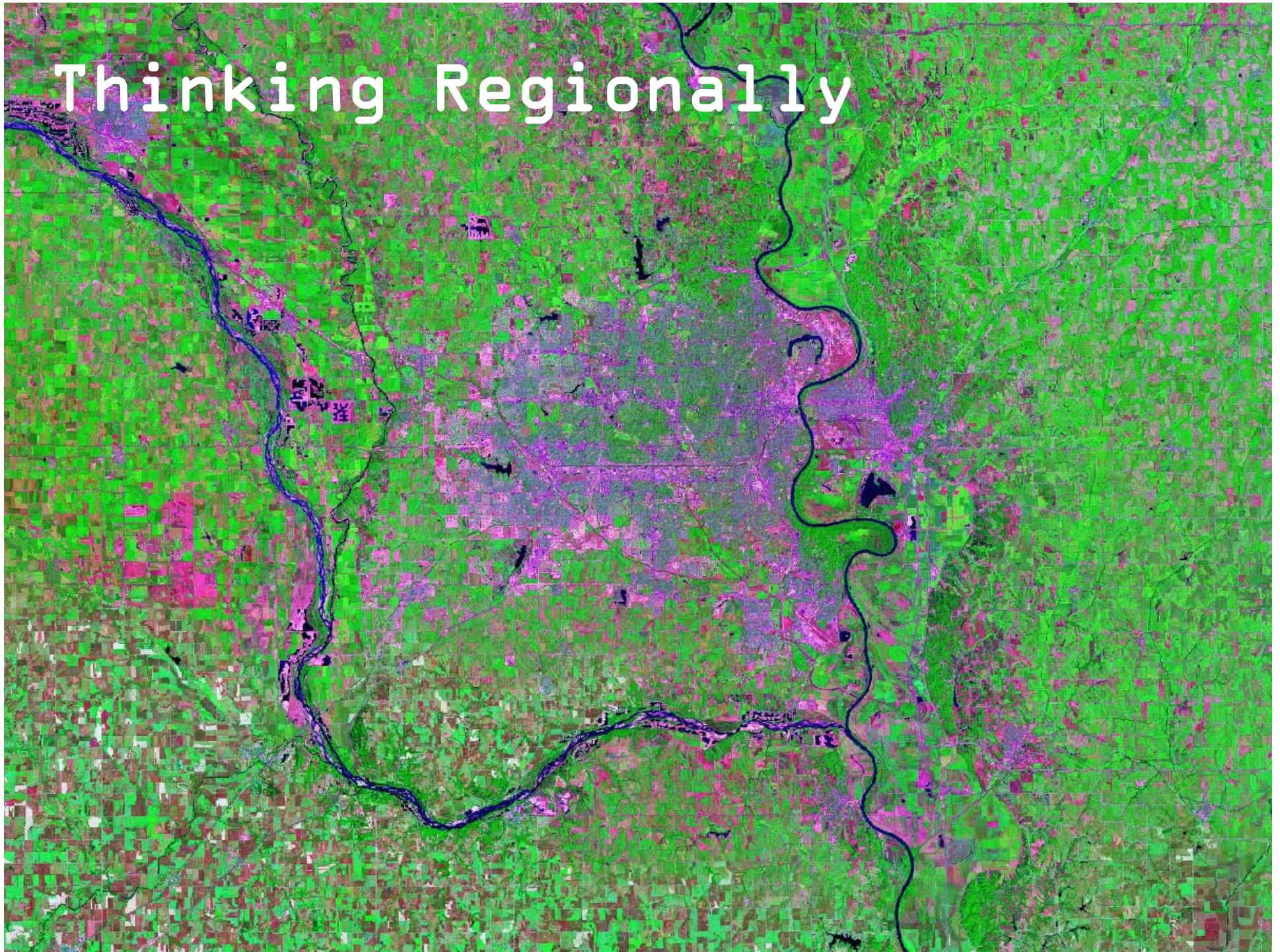
Scenario C: Concentrated Growth



Scenario D: Distributed Growth



Thinking Regionally



Partnership



Rural Outreach



Map Exercise

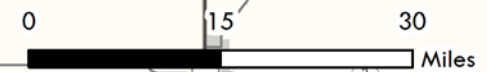
Groups present maps and strategies



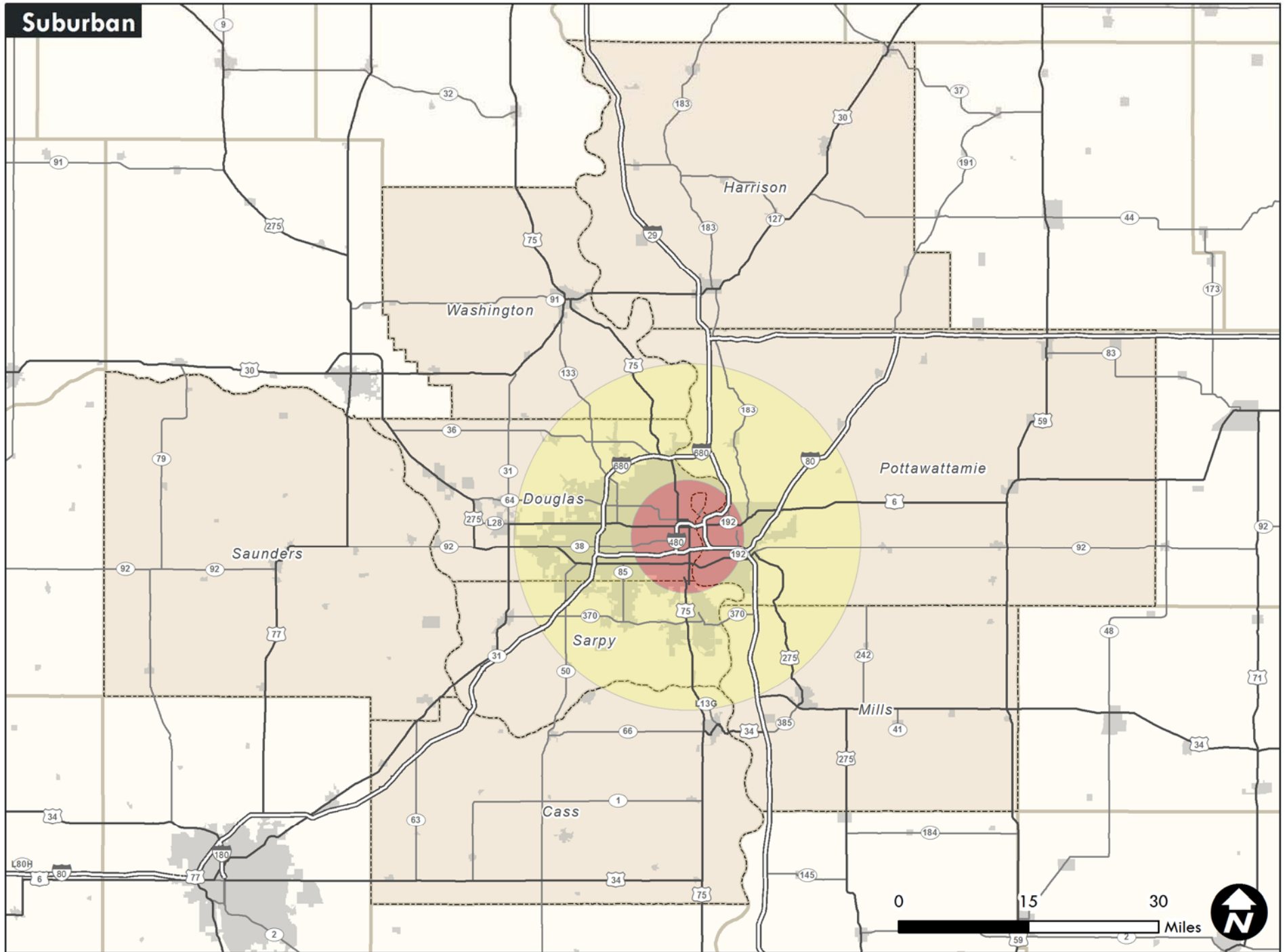
Products and Outcomes

- **A Regional Vision**
 - **Path to Action**
 - **Regional Compact**
 - **Implementation and Follow-through**
- Roadmap to Vitality**
-
- ```
graph LR; A[• A Regional Vision] --> D[• Roadmap to Vitality]; B[• Path to Action] --> D;
```

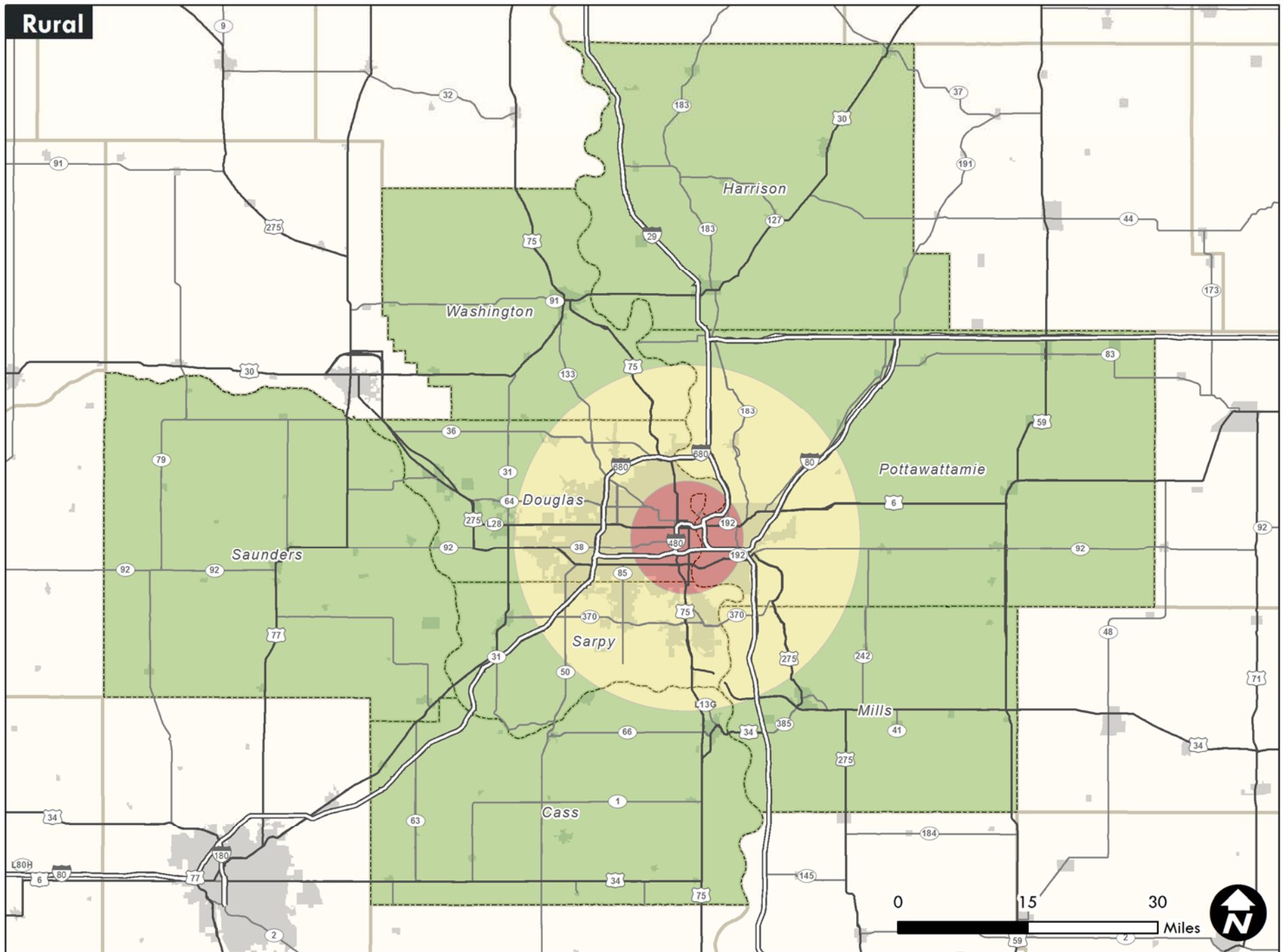
This map displays the geographical layout of Douglas County, Nebraska, and its surrounding areas. County boundaries are delineated by dashed lines, and major roads are shown as solid lines with route numbers. A red circle is centered on the Douglas area, indicating the Urban Core. The map includes labels for several counties: Harrison, Washington, Pottawattamie, Saunders, Sarpy, Cass, and Mills. Major roads such as I-80, I-70, and US-75 are visible. A scale bar at the bottom right indicates distances in miles (0, 15, 30), and a north arrow is located in the bottom right corner.



**Suburban**



Rural





# Parallel Planning Efforts

## 2014 FOCUS GROUPS

- SAFETY, CRIME, VIOLENCE, GANGS
- ECONOMY AND JOBS, MAKING LIVABLE WAGE
- BASIC NEEDS – MAKING ENDS MEET, ACCESS TO FOOD, UTILITY PAYMENTS ASSISTANCE, HOUSING
- HEALTHCARE – ACCESS TO HEALTHCARE, MENTAL HEALTH SERVICES
- EDUCATION
- TRANSPORTATION



# Watershed Boundaries

