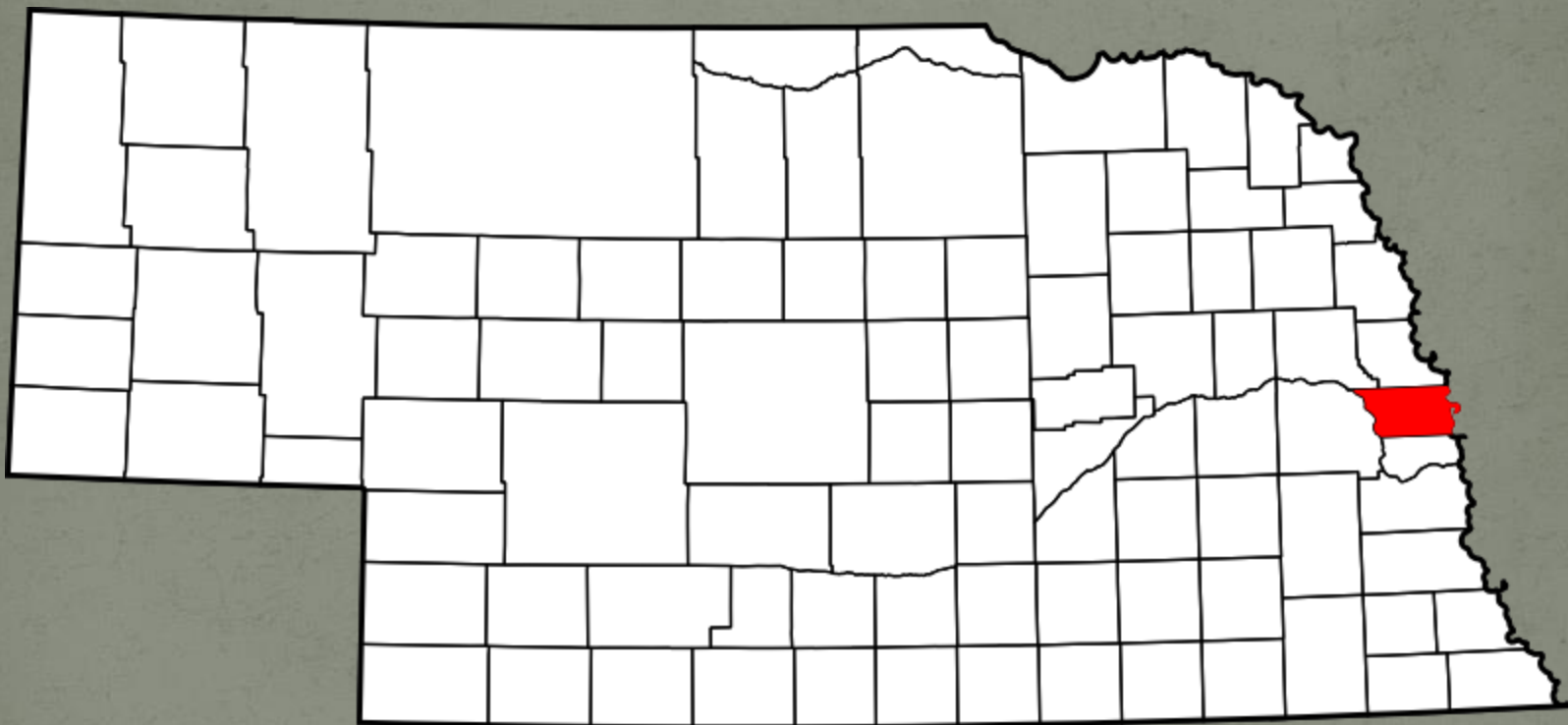


Douglas County



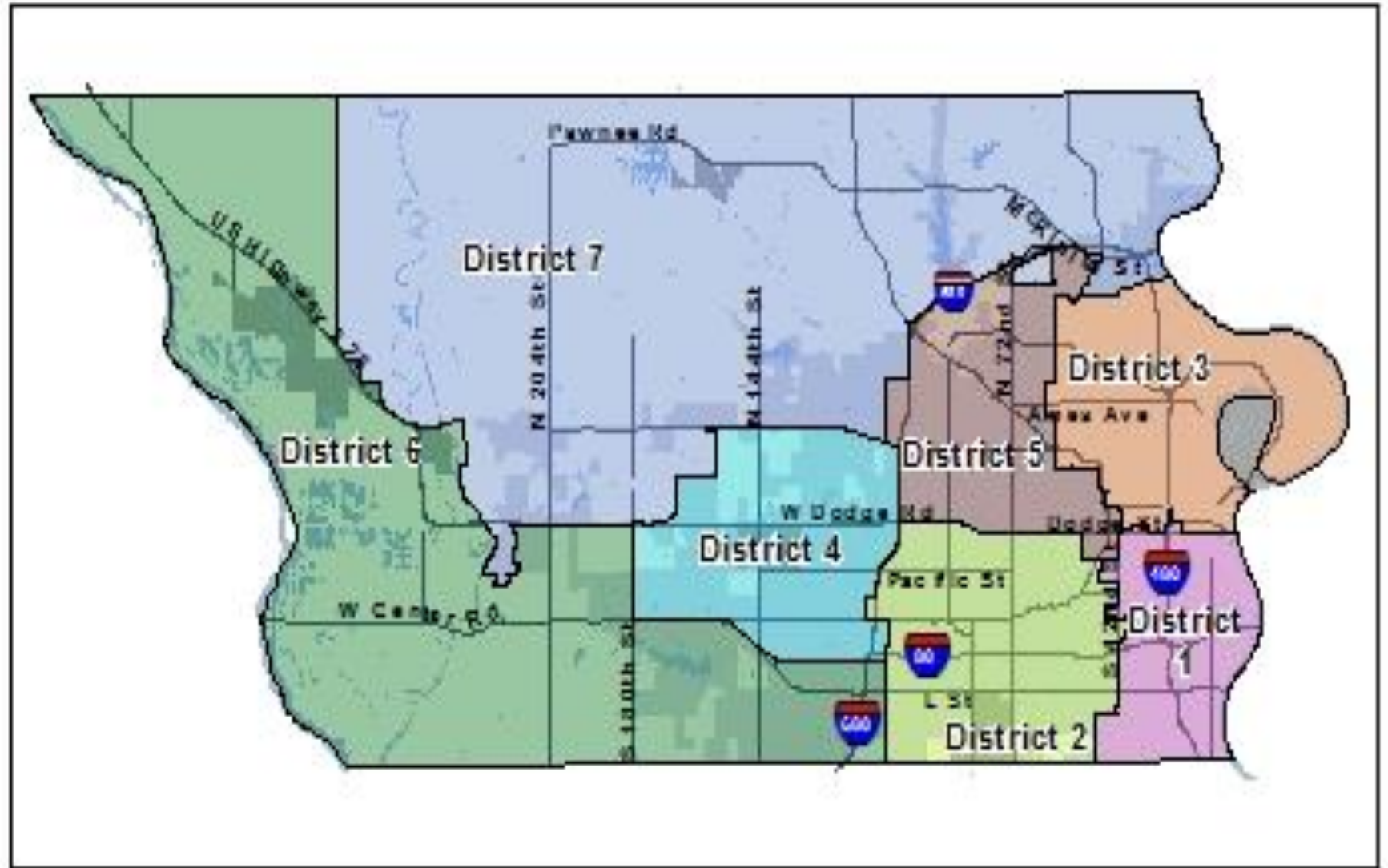
Douglas County

- Established in 1854
- Population 517,110
- NE's most populous county

Governance

- 7 County Commissioner districts.
- Each district has 73,000+ people.
- Terms are staggered by even/odd numbered districts.
- Commissioners are elected for a 4 year term.

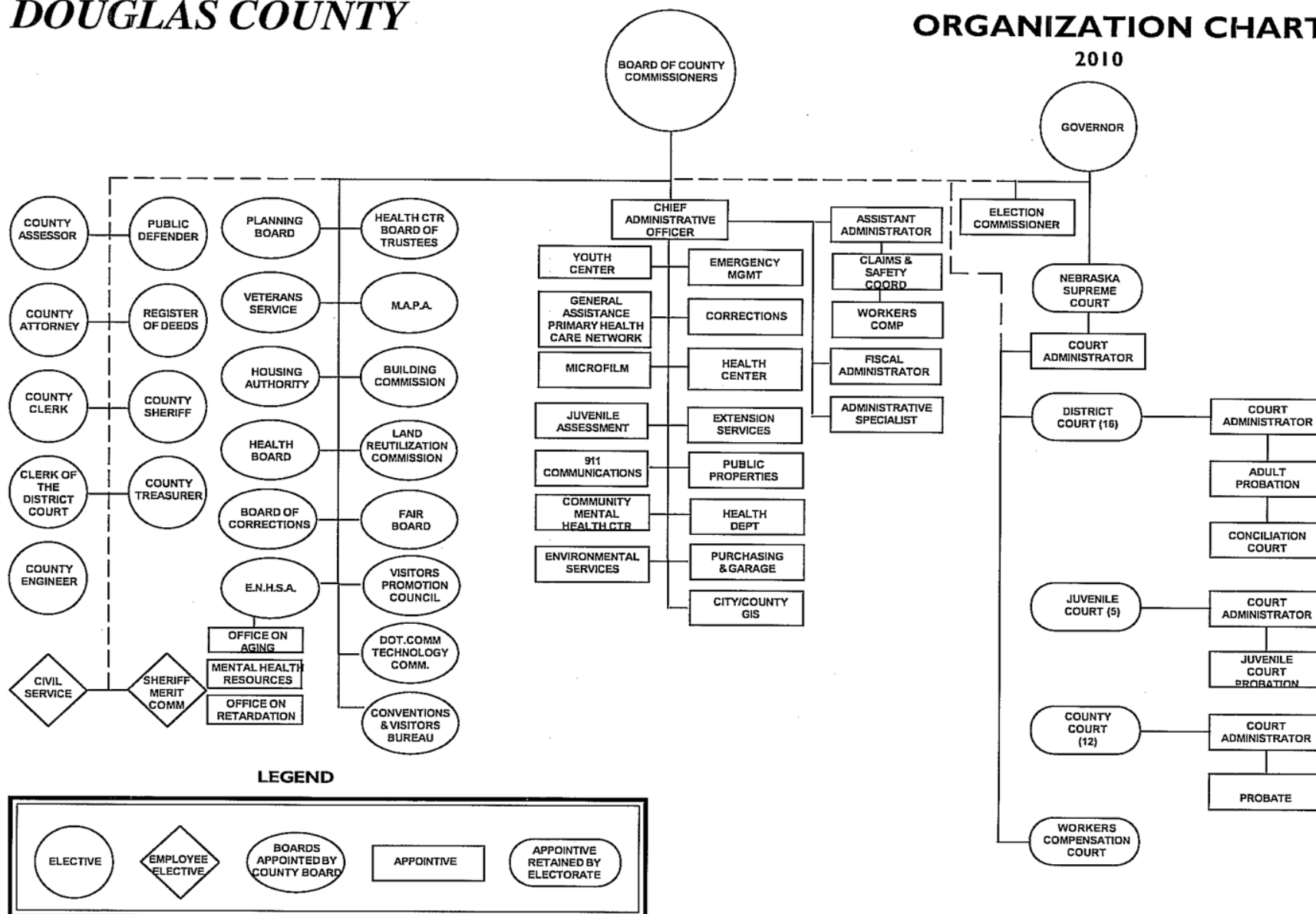
County Districts



ORGANIZATION CHART

ORGANIZATION CHART

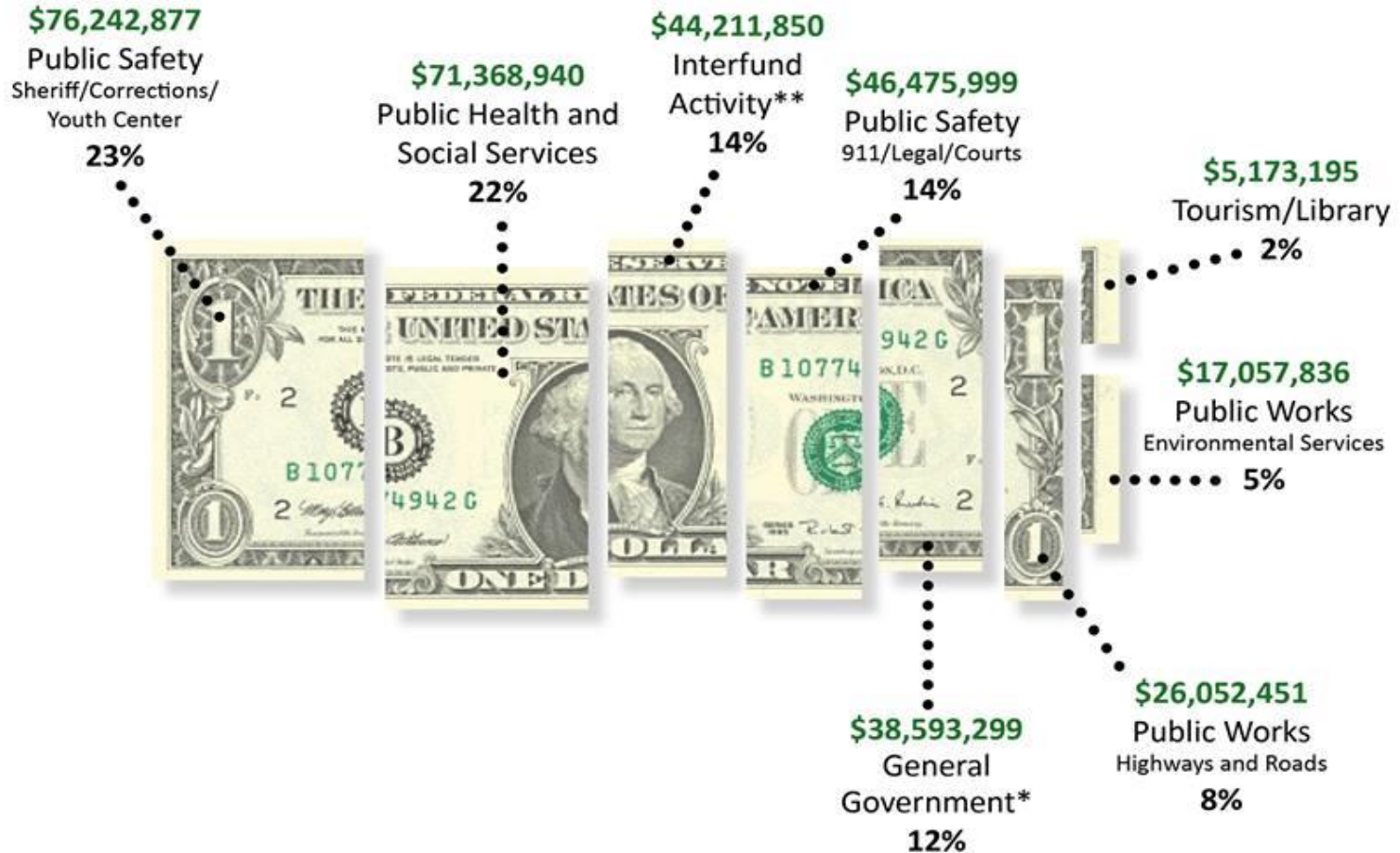
2010



Budget/Employee Info

- Overall adopted 2013/2014 budget of \$324.1M, and is \$2.5M (or 0.8%) lower than previous year's budget.
- Douglas County has approximately 2,100 employees.
- The County has 33 bargaining units and 17 labor contracts covering approximately 1,700 County employees.

Where 2013 Douglas County Spending Went



* General Government includes Assessor, Clerk, Commissioners, Extension, Election Commission, Garage, Purchasing, Register of Deeds, Treasurer, Administration, Microfilm, Civil Service, Public Properties and GIS.

** Interfund Activity includes Inheritance Tax, Inventory Fund, Insurance Fund, and Lottery Fund.

How can some of our challenges/goals be addressed with the Heartland 2050 regional plan?

- Heartland 2050 planning process will
 - help us define what kind of region we want to be forty years from now.
 - provide an opportunity to be a part of and shape ourselves and our region.
 - It also will help to create a regional vision that takes into account people, places and resources.

Population projections- population is projected to nearly double by 2050

This has a lot of implications for how we continue to provide critical services and infrastructure to our residents and continuing to protect quality of life.

- Transportation issues/efforts
- Workforce development challenges
- Poverty challenges
- Medical Services

Douglas County's involvement in Heartland 2050

- Discussion of the role Douglas County has played in Heartland 2050
 - Public workshops were planned in all 8 counties. Douglas County workshop was held back in November 2013.
 - Gives public the opportunities to give their input on where our county should grow and not grow, transportation infrastructure in areas where there is an expectation of new jobs and/or housing, etc.
 - The maps the community workshops created were then used in the scenario planning process to build potential scenarios and then evaluate and compare the scenarios.
 - Highlight the importance of using public preferences of Douglas County residents to shape the Vision for the region

Heartland 2050 vision helps to guide decision-making on the county level for housing, transportation, infrastructure and/or land use

- Heartland 2050 – helps us as policy-makers on the local level with decisions that can set the course for our development for generations to come.
 - The decisions we make now are really going to impact us in the next 40 years.
- Heartland 2050 provides us with factual information that helps to guide us when adopting rules for land use. Gives us a broad look at multiple ways to develop and the impact that will have on our neighborhoods, civic groups, schools, transportation system, and the list goes on and on.
- Also provides us with tools we can consider when it comes to important decisions on future growth.
- Scenarios help county leaders better understand the economic, social and environmental impacts of our land use and development decisions.
 - Also helps us be more strategic and cost-effective with our community and economic development plans.
 - Seeks a wide variety of viewpoints, including a series of public visioning workshops.

The importance of counties coming together to address regional planning issues

- Importance of coordination and collaboration to managing growth that maximizes public investment and helps our county and our region stay economically competitive.
- Having a shared vision for our region helps us as local level policy makers to avoid conflicting plans related to things such as traffic, health and environmental quality that are so important to all of our residents to maintain a high quality of life.

The importance of connecting rural and urban leaders in the region.

- Important linkages between rural and urban communities in region are important to economic growth.
- Preparing for future growth and sustainable development- development that meets the needs of the present without comprising the ability of future generations to meet their own needs.
- We are all in this together so it make sense to do planning together.

Thank you

- Commissioner Mary Ann Borgeson
- 1819 Farnam Street LC2
- Omaha, NE 68183
- 402-444-7025
- maryann.borgeson@douglascounty-ne.gov