

FTA

FEDERAL TRANSIT ADMINISTRATION

Statewide and Nonmetropolitan Planning

Regional Transportation Planning Organizations (RTPOs)

State Programs Meeting
8/7/13

John Sprowls
Community Planner, FTA Office of Planning and
Environment



U.S. Department of Transportation
Federal Transit Administration

Topic Agenda

1. Statewide and Nonmetropolitan Planning – new or revised provisions in MAP-21
2. Duties of RTPOs
3. Transportation Planning Capacity Building Program (TPCB)

MAP-21

- SAFETEA-LU expired on 9/30/09
- MAP-21 Passed on July 6, 2012
- MAP-21 Effective Date October 1, 2012

Statewide & Nonmetropolitan Transportation Planning – *New or Revised Provisions*

- Formerly “Statewide Transportation Planning” (SAFETEA-LU), now “Statewide & *Nonmetropolitan* Transportation Planning”
- New provision - States may establish and designate Regional Transportation Planning Organizations (RTPOs) for purposes of conducting rural transportation planning.



It's Optional

Statewide & Nonmetropolitan Transportation Planning – *New or Revised Provisions* (Cont.)

Consultation becomes Cooperation

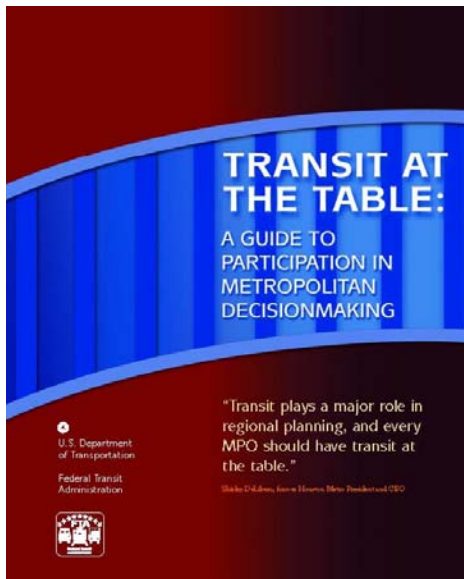
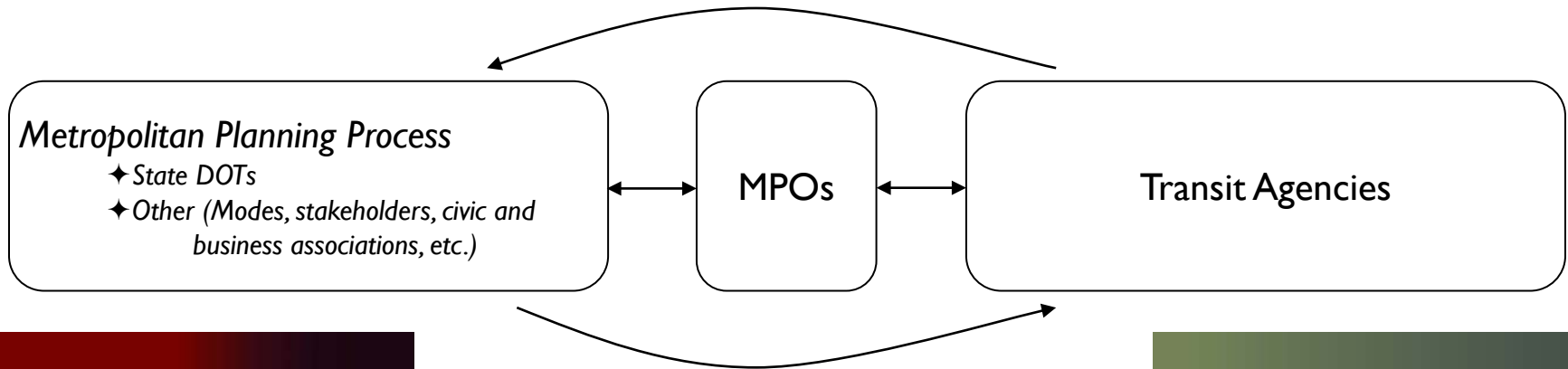


Statewide & Nonmetropolitan Transportation Planning – *New or Revised Provisions* (Cont.)

- **Scope of the Statewide Planning Process**

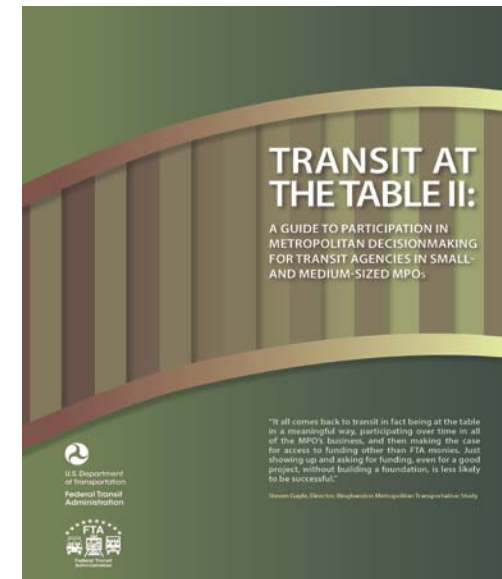
“In carrying out planning...with respect to nonmetropolitan areas, each State shall cooperate with affected local officials with responsibility for transportation or, if applicable, through regional transportation planning organizations.” (49 U.S.C. 5304(e)(1))

Transit at the Table I and II

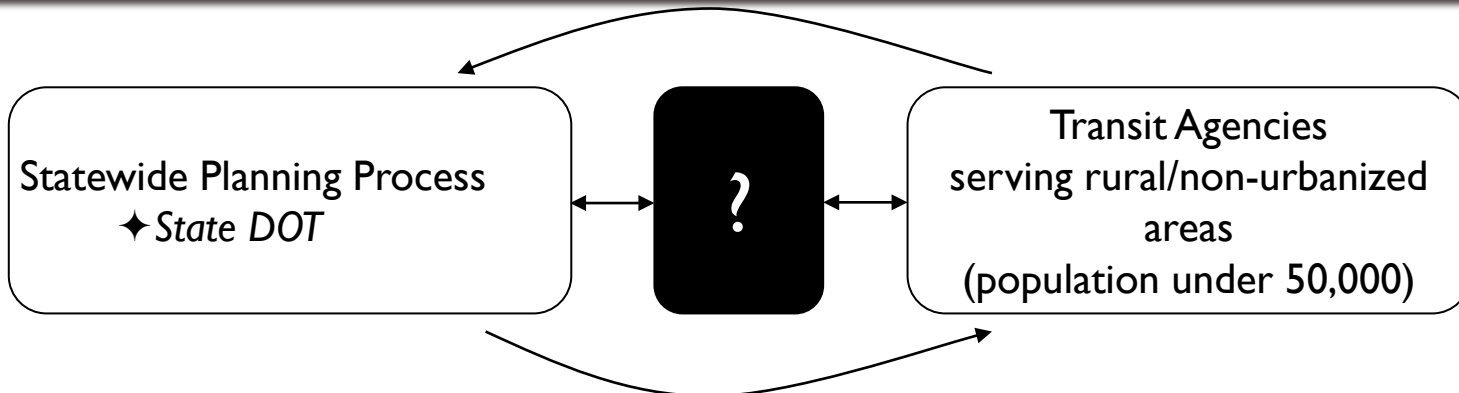


Large urbanized areas
(population greater than 200,000)

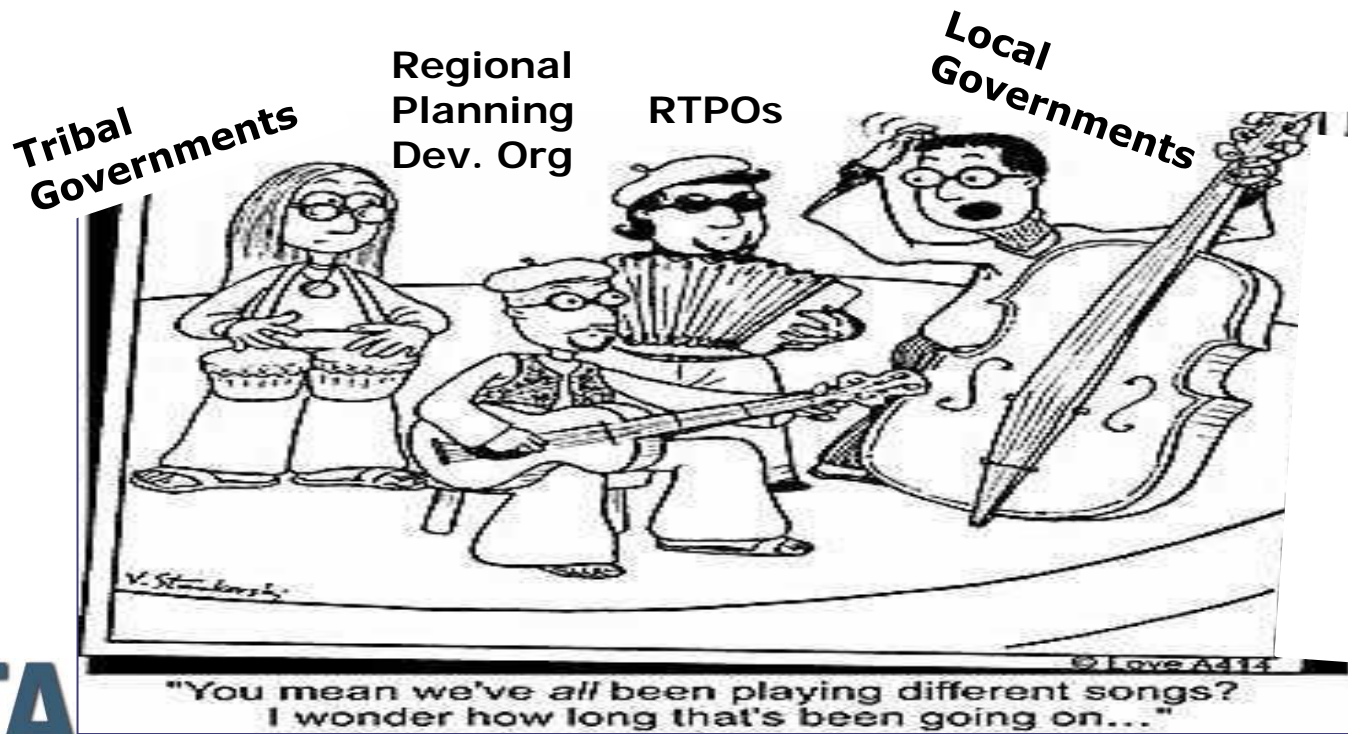
- Transit agency involvement with the MPO is important
- Increased transit participation in the MPO process can:
 - Improve transit agency staffing resources
 - Improve transit agency influence
 - Leverage additional funding opportunities.



Small and medium-sized urbanized areas
(population between 50,000 and 200,000)



Who is in the black box? What role do they play?



Statewide & Nonmetropolitan Transportation Planning

Long Range Statewide Transportation Plan

Shall be developed in **cooperation** with (49 U.S.C. 5304(f)(2)(b)(i))

- In nonmetropolitan areas - affected nonmetropolitan officials with responsibility for transportation or, if applicable, through Regional Transportation Planning Organization (RTPO)
- In metropolitan areas – with MPOs.



Statewide & Nonmetropolitan Transportation Planning



Statewide Transportation Improvement Program (STIP)

Shall be developed

- In nonmetropolitan areas - in **cooperation** with affected nonmetropolitan local officials with responsibility for transportation or if applicable, through RTPO's. (5304(g)(2)(B))
- In metropolitan areas, in **cooperation** with MPOs. (5304(g)(2)(A))

Statewide & Nonmetropolitan Transportation Planning - RTPOs

- **Optional** – State Designation of Regional Transportation Planning Organizations (RTPOs)
 - States may establish and designate RTPOs to enhance statewide planning.
 - An RTPO shall be established as a multi jurisdictional organization of nonmetropolitan local officials and reps of local transportation systems.
 - RTPO's shall establish a policy committee, the majority of which are non-metro local officials, and as appropriate, reps from the State, private business, transportation service providers, economic development practitioners and the public in the region.

Statewide & Nonmetropolitan Transportation Planning - RTPO's (cont.)

- RTPO shall establish a fiscal and administrative agent, such as an existing regional planning and development organization to provide professional planning, management, and administrative support
- RTPO Duties-
 - Regional long-range multimodal transportation plans
 - Regional TIPs
 - Coordination of local planning, land use and econ. dev.

Statewide & Nonmetropolitan Transportation Planning - RTPO Duties (cont.)

- Technical assistance to local officials
- Participating in National, multi-state, State policy and planning development processes
- Provide a forum for public participation in regional and statewide planning
- Sharing plans and programs with neighboring RTPOs and MPOs and tribal organizations
- States without RTPOs shall consult with the affected nonmetropolitan local officials.



Statewide & Nonmetropolitan Transportation Planning

Funding to support RTPOs

- Statewide Planning & Research (SP&R) Funds
 - States **can** use SPR funds to fund RTPOs (5305(e))
- Statewide and non-metropolitan planning and metropolitan planning **are** eligible for Surface Transportation Program (STP) funds.
- Statewide and non-metropolitan planning and metropolitan planning are **not** eligible for National Highway Performance Program (NHPP) funds.

Frequently Asked Questions (FAQ)

- If my state already has Rural Planning Organizations, will they still need to designate to be considered a RTPO ?
 - Yes; MAP-21 changes to the statute describe the establishment and designation of an RTPO as an activity taking place after MAP-21 – a “State may establish and designate” RTPOs.
- Will FTA and FHWA produce guidance on the topic of RTPOs?
 - Yes; Clarifying information such as FAQs and/or guidance will be prepared after the joint planning regulations are finalized.

For more information

- Webinars – *Transportation Planning Information Exchange Series*
- Webpage - <http://fta.dot.gov/map21/>
- Fact sheets and Q&As
- Planning NPRM



TRANSPORTATION PLANNING
CAPACITY BUILDING PROGRAM
www.planning.dot.gov

Contact Information

John Sprowls

FTA Office of Planning and Environment

John.Sprows@dot.gov

Tel: 202-366-5362

Website - <http://fta.dot.gov/map21/>



Federal Transit
Administration
www.fta.dot.gov