



M I D - S O U T H R E G I O N A L
GREENPRINT



CONNECTING COMMUNITIES FOR OUR FUTURE



REGIONAL PLANNING GRANT

- In November 2011, Shelby County Government was awarded a \$2.6 million HUD Regional Planning Grant to develop the Mid-South Regional Greenprint & Sustainability Plan.
- The Mid-South Regional Greenprint and Sustainability Plan seeks to create a regional network of green spaces to connect Shelby County, Fayette County TN, Crittenden County AR, and DeSoto County MS.



Study Area: Memphis MPO, West Memphis MPO



MID-SOUTH REGIONAL
GREENPRINT



GREENPRINT INTRODUCTION

- A Greenprint is a plan to balance conservation of green space and natural resources with community directions for growth and development.
- Greenprint includes:
 - Parks and greenways
 - Trails
 - Agricultural areas
 - Community Gardens
 - Forested areas
 - Swales and bioretention areas
 - Protected waterways
 - Wetlands
 - Wildlife refuges
 - Conservation easements



MID-SOUTH REGIONAL
GREENPRINT



REGIONAL VISION PLAN

- The planning process is guided by a consortium of over 80 organizations and 200 individuals from the four-county region
- The consortium includes eight topic-focused working groups considering how can we use green space to...
 - Improve regional quality of life
 - Promote community health
 - Create stronger connectivity to parks, open spaces, and communities
 - Build on pedestrian, bicycle, and transit infrastructure
 - Establish better access from homes to jobs, schools, services, and fresh foods
 - Improve environmental quality and natural habitat
 - Achieve equitable project impact



MID-SOUTH REGIONAL
GREENPRINT



CONSORTIUM PARTNERS

- 22 consortium members contribute in-kind match to the Regional Planning Grant (Target: \$1.2 Million)
- Largest contributor of in-kind match is Hyde Family Foundations (over \$500,000 committed)
- Hyde Family Foundations supports the Regional Planning Grant through staff and organizational involvement, grants to partner organizations, and leading the conversation on funding and implementation of the Greenprint plan
- In addition to formal consortium partners, numerous other organizations and individuals contribute to the regional planning process



MID-SOUTH REGIONAL
GREENPRINT



CONSORTIUM WORKING GROUPS

Working Groups are staffed by a local non-profit organization

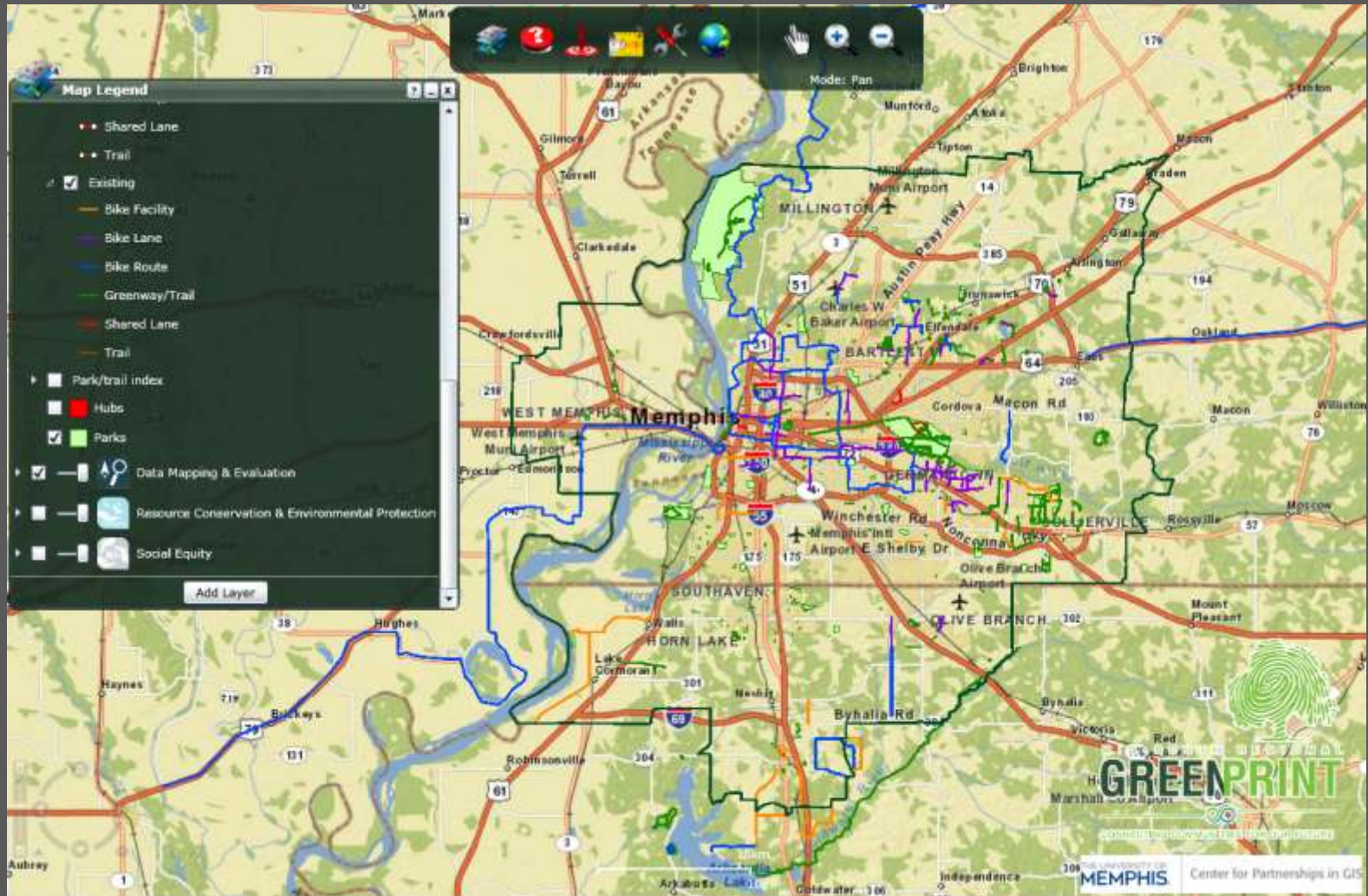
- **Social Equity**
- **Data Mapping and Evaluation**
- **Parks and Greenways**
- **Resource Conservation and Environmental Protection**
- **Alternative Transportation and Fuels**
- **Community Health and Wellness**
- **Workforce Development and Regional Employment**
- **Housing and Neighborhood Land Use**



MID-SOUTH REGIONAL
GREENPRINT



DATA MAPPING AND ANALYSIS



MID-SOUTH REGIONAL
GREENPRINT



PUBLIC PARTICIPATION

- Regional Forums (4)
- Community Forums (14)
- Community Outreach
- Stakeholder Interviews
- Online Surveys
- U Map It! crowd-sourcing tool
- Social Media



MID-SOUTH REGIONAL
GREENPRINT



PLAN PROCESS

Phase 1:

Regional Visioning
August 2012 to September 2013

Regional Vision Plan

Data Analysis and Mapping

Capacity Building and Community Engagement

Bus Transit to Workplace Study

Health Impact Assessment

Phase 2:

Sub-planning
October 2013 to December
2014

Sub-planning Awards

Fair Housing and Equity Assessment

Minority Recreational Use Campaign

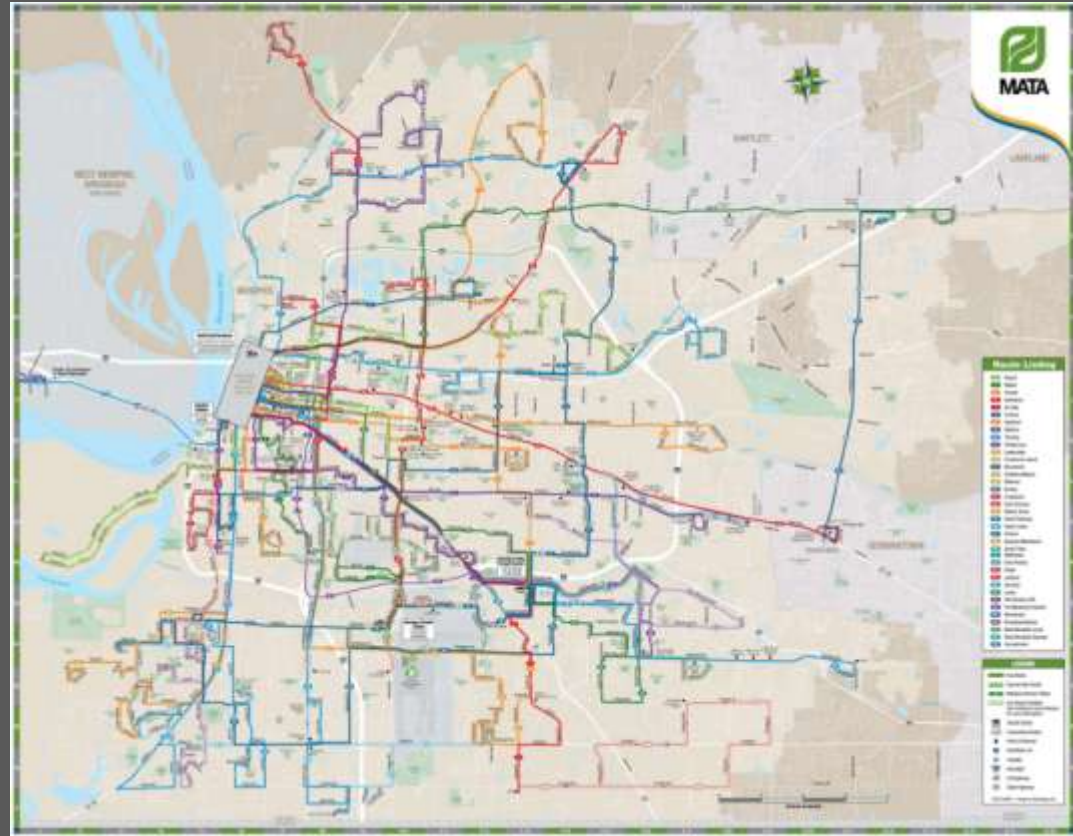


MID-SOUTH REGIONAL
GREENPRINT



BUS TRANSIT TO WORKPLACE STUDY

- Collect and summarize data on demographics, employment, and travel flows
- Survey employers and employees on transit access to major employment centers in the region
- Determine level of ridership of transit to accessing work and where barriers or gaps exist in infrastructure
- Make recommendations on route realignments to better serve employment centers and how to connect greenways, pedestrian, and bicycle infrastructure



MID-SOUTH REGIONAL
GREENPRINT



SUB-PLANNING PROCESS

- Phase 2 (beginning October 2013) involves sub-granting awards to consortium partners for localized or topic-focused projects
- Lead applicant must be a consortium organization
- Process is intended to encourage partnerships among organizations across the region in order to build on regional vision plan and develop partnerships for place-based strategies in the future



MID-SOUTH REGIONAL
GREENPRINT





John Zeanah
Program Manager,
Mid-South Regional Greenprint & Sustainability Plan
(901) 576-7167
john.zeanah@memphistn.gov

WEB: www.midsouthgreenprint.org

FACEBOOK: Search “Mid-South Regional Greenprint”

TWITTER: @MSRGreenprint

YOUTUBE: youtube.com/midsouthgreenprint

