



Lee Hinson, Board Chair
Diana Threadgill, President



connecting people to the great river

www.msrivertn.org

Jim Fullen Ramp, Lauderdale County



Mission Statement:

To identify, conserve and interpret the region's natural, cultural and scenic resources to improve the quality of life and prosperity in West Tennessee.

Milestones and Awards



*Reelfoot Refuge -
Walnut Log*

2002

**Initial concept to create a Mississippi River
Corridor in Tennessee**

2006

Conceptual Master Plan

2007

**MRCT receives non-profit designation from IRS
First Place - Communications and PR Campaign**

2008

Environmental Systems Enhancement Plan

2008-09

Corridor Management Plan

2009

**National Scenic Byway Designation for the Great
River Road- TN**

2010/11

Pilot Award - MS River Parkway Commission

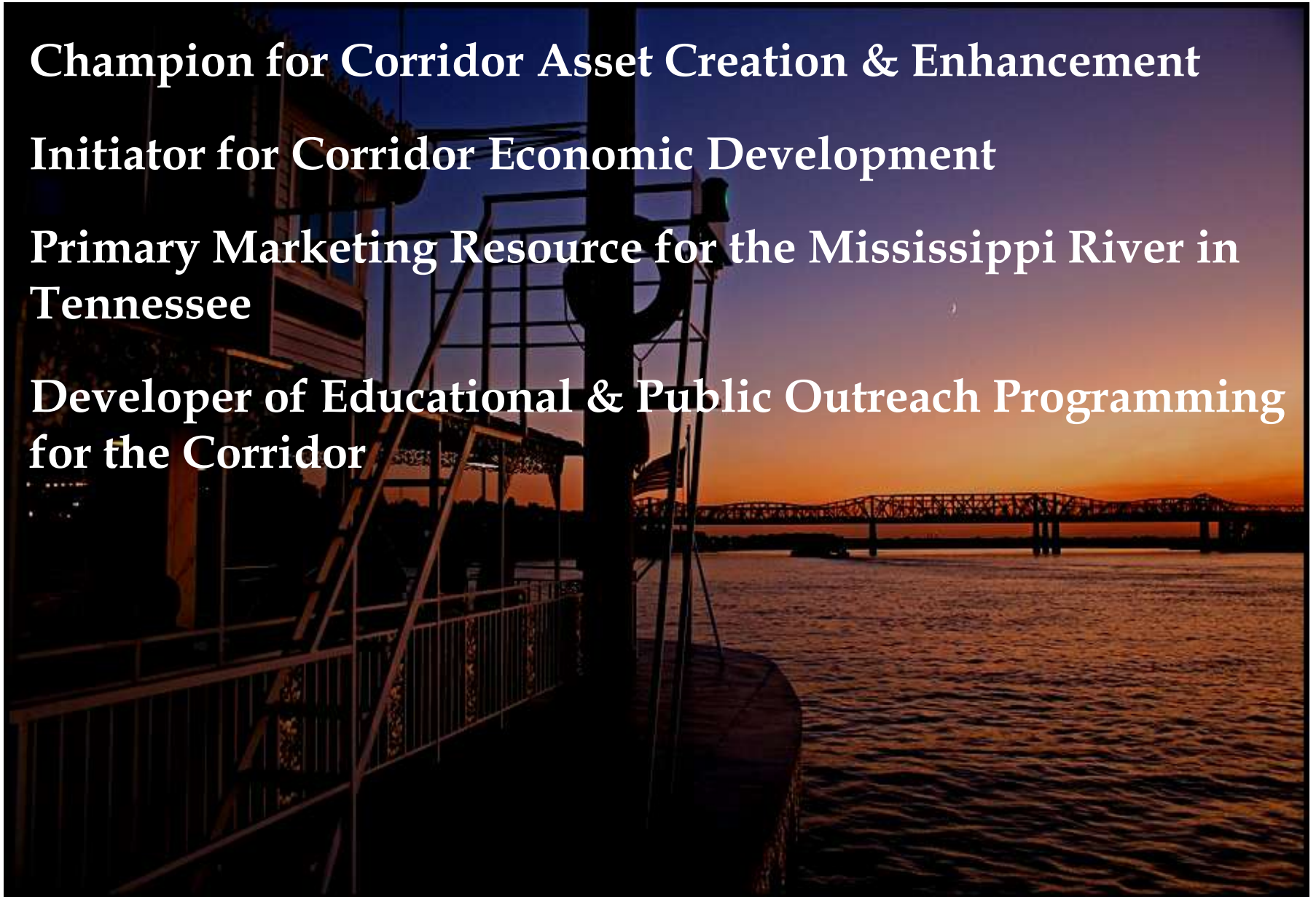
PRIMARY ROLES OF THE MRCT

Champion for Corridor Asset Creation & Enhancement

Initiator for Corridor Economic Development

Primary Marketing Resource for the Mississippi River in Tennessee

Developer of Educational & Public Outreach Programming for the Corridor



Concept

A scenic view of a city skyline at dusk, featuring a large arched bridge over a river and various skyscrapers in the background.

Unify the assets into a single product recognized as an international, national and regional destination, which will provide a major economic stimulus, thus enhancing the quality of life within the Corridor and the region.

Seven Project Categories

- **Economic Development**
- **Transportation and Infrastructure**
- **Land Conservation**
- **Recreation**
- **Heritage Development and Cultural Amenities**
- **Health and Wellness**
- **Education**

The Mississippi River Corridor Tennessee Incorporates Six Counties

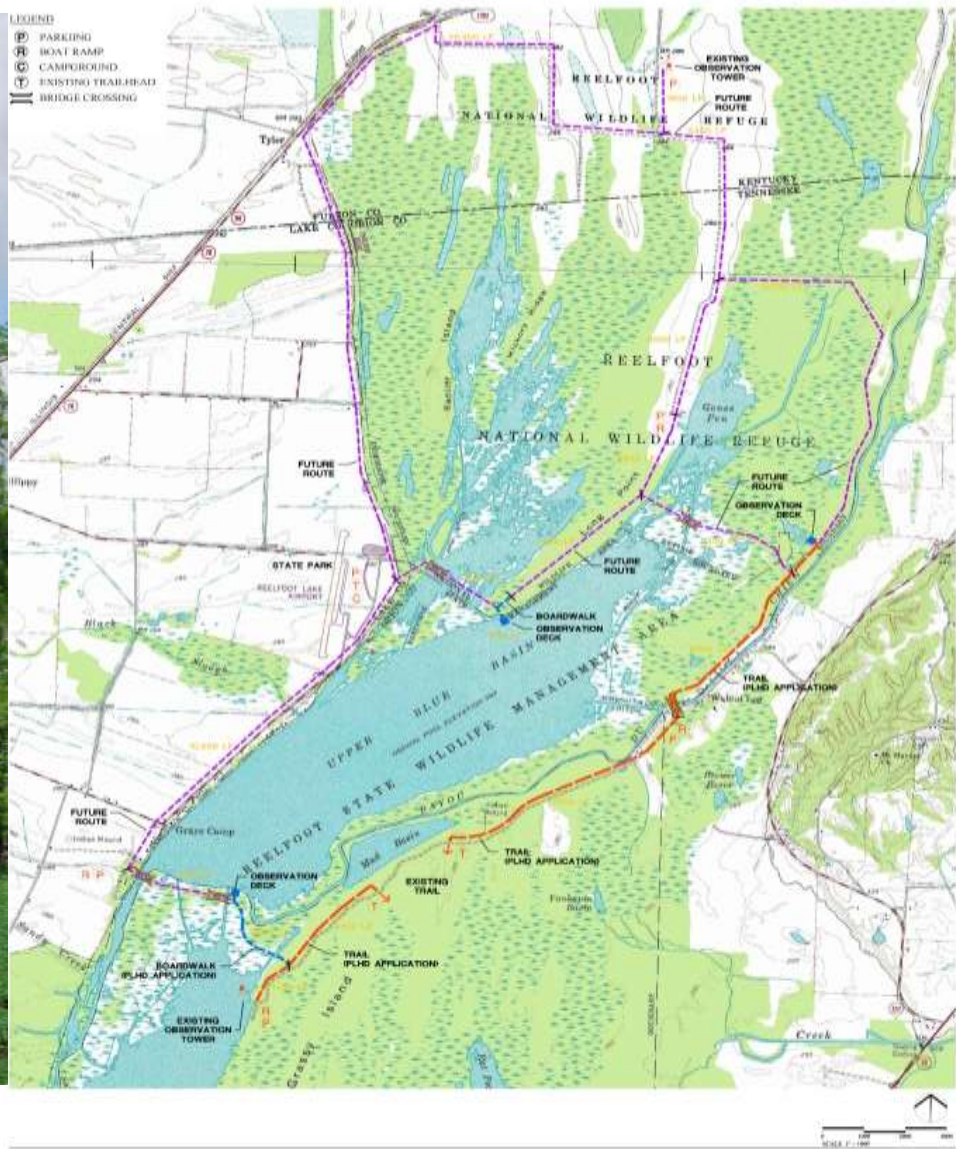
Obion
Lake
Dyer

Lauderdale
Tipton
Shelby

Obion County



Discovery Park of America, Union City



REELFOOT LAKE TRAIL AND BOARDWALK

REELFOOT LAKE, TENNESSEE
MISSISSIPPI RIVER CORRIDOR - TENNESSEE

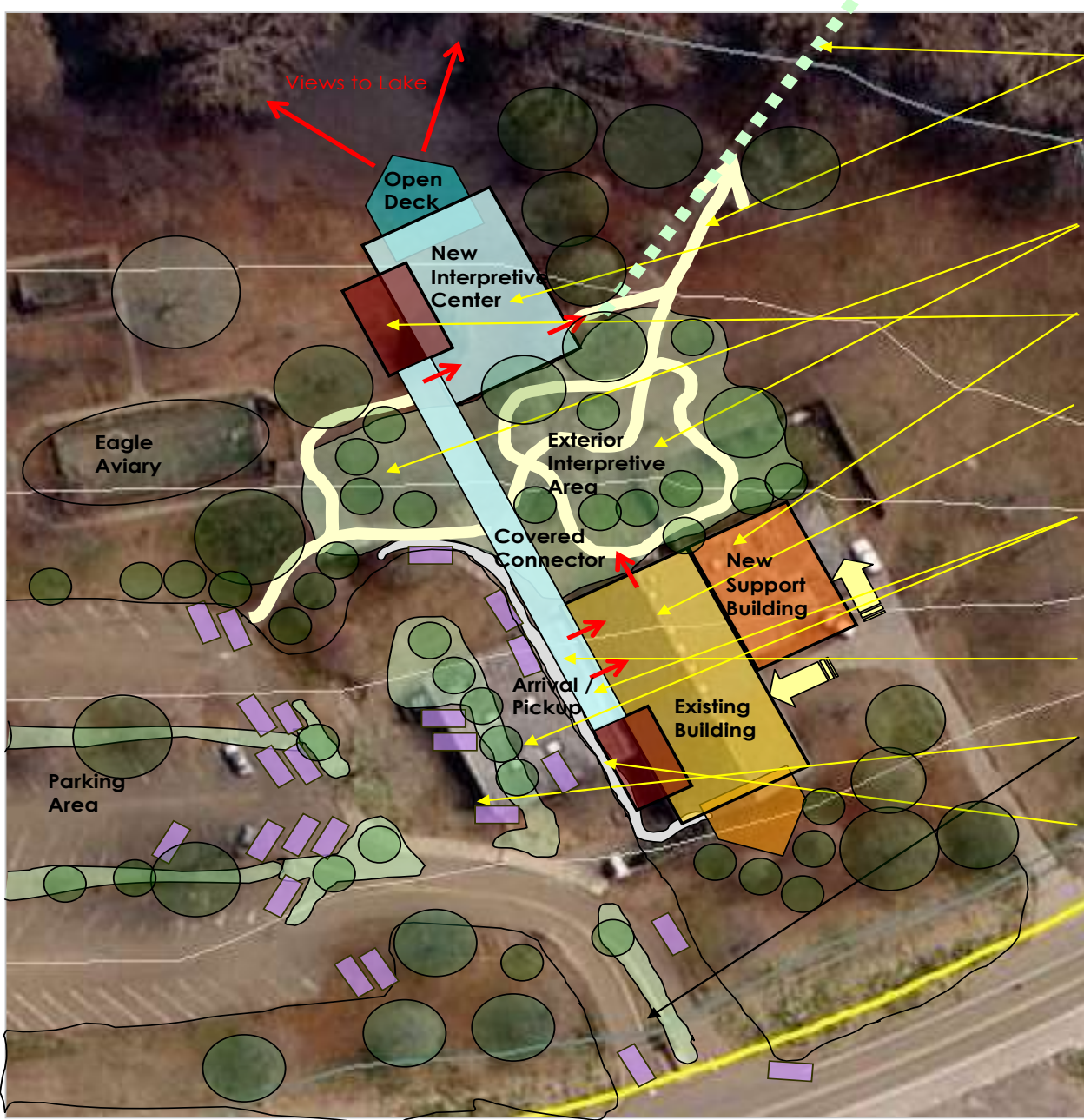
ILLUSTRATIVE CONCEPT PLAN

RITCHIE SMITH ASSOCIATES | PLANNERS / LANDSCAPE ARCHITECTS | MAY 20, 2011

PARTNERS: Walton Foundation, Ritchie Smith Associates, USFWS & TWRA

Lake County: \$1.5M NSB Grant for a New Visitors & Interpretive Center at Reelfoot Lake State Park





- Connection to existing Boardwalk into natural area
- New 3500 SF Interpretive Center with overlook through natural area to lake
- Exterior Interpretive area – open at all hours and full of natural exhibits
- Support Areas/ Administration/ Mechanical/ Receiving Areas/ Exhibit Storage/ Toilets
- Renovated Gathering Building/ New metal roof/ meeting area enlarged/
- Demolish existing exhibits building and create a new arrival area with covered connector from existing spaces to new exhibit area
- Create new main entry for Gathering Facility
- Enlarge Parking area and create new main entry onto TN-21/22
- Arrival Plaza/ Sidewalk

● New Outside Patio

**Proposed New Interpretive Center
Reelfoot Lake State Park
Tiptonville, Lake County, TN**

Askew Nixon Ferguson Architects Memphis



PARTNERS: TDOT, NSB, TDEC - State Parks & ANF Architects

Dyer County: Floating Boat Dock & Blueway



Forked Deer River

Dyer County: River Center



PARTNERS: TDEC Recreational Trails Program, USDA, Walton Family Foundation & MRCT's Dyer County Task Force

Lauderdale County

An Environmental & Economic Study of the Bottomlands

THE STUDY'S MISSION

UTILIZING LAUDERDALE COUNTY'S
MISSISSIPPI RIVER WETLAND
ENVIRONMENT AS AN ECONOMIC
DEVELOPMENT ASSET

Porter Gap Overlook - Spring Floods

Lauderdale County



Chickasaw Refuge

PARTNERS: The McKnight Foundation, A2H Engineers & Architects, Mississippi River Trust, American Society of Ecotourism & Memphis Regional Design Center



Champion Lake



Lower Hatchie Refuge

Ft. Pillow State Historic Park

MRCT has received two grants to update and redevelop the exhibit space in the lobby area of Ft. Pillow State Historic Park.



Partners: Tennessee Civil War National Heritage Area, National Scenic Byways & TDEC Tennessee State Parks

Tipton County



Ride to Randolph, November 2012

Development of bike excursions from Memphis to Randolph Bluff on the Mississippi River Trail.

Partners: Dixon Hughes Goodman, FedEx, Memphis Area Association of Governments and TN Department of Tourist Development

Shelby County

Surveyed the 50 miles of MRT in Shelby, rerouting sections and adding a new southern connection to the State of Mississippi.





Making New Bike/Ped Connections in Shelby County
Loosahatchie River Bridge

Harahan Bridge Project



Shelby County Partners

Hyde Family Foundations, FedEx, Shelby County Government, Sustainable Shelby, John & Estie Sheahan, The Harahan Bridge Project & the Mississippi River Trail



Lower Mississippi River Resource Assessment (LMRRA)

The purpose of the study is to develop recommendations for:

- the collection and use of information needed for river-related management;**
- the planning, construction, and evaluation of potential restoration, protection and enhancement measures to meet identified habitat needs;**
- potential projects to meet identified river access and recreation needs.**

Partners:

Led by the U.S. Army Corps of Engineers and sponsor The Nature Conservancy with partner entities Mississippi River Corridor-Tennessee, Audubon Society, Lower Mississippi River Conservation Committee, Delta Wildlife, Mississippi Wildlife and Quapaw Canoe Company.

Economic Impact



The Economic Impact of MRCT will have a monumental influence on the region for generations to come.

A landscape photograph showing a vast, golden-brown field in the foreground, likely a harvested crop field. In the middle ground, there are several scattered trees and a line of greenery. The sky is a clear, vibrant blue, filled with large, fluffy white cumulus clouds. The overall scene is bright and sunny.

TOTAL ECONOMIC IMPACT OF OVER \$6 BILLION

Based on a total investment of \$70 million over 20 years

This equates to a payback of \$85 for every \$1 invested



Diana Threadgill, President
diana@msrivertn.org
www.msrivertn.org