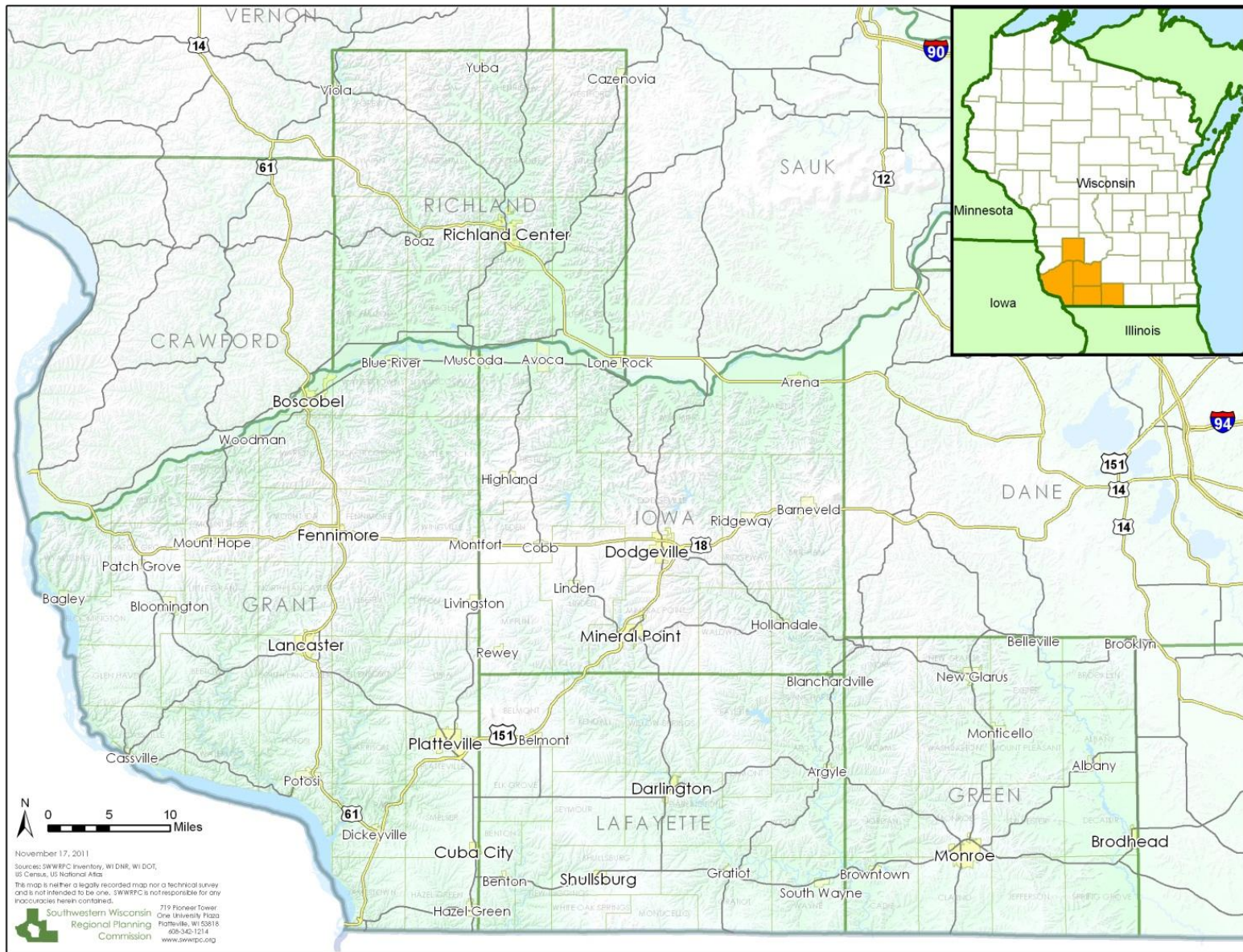




Southwestern Wisconsin Regional Planning Commission

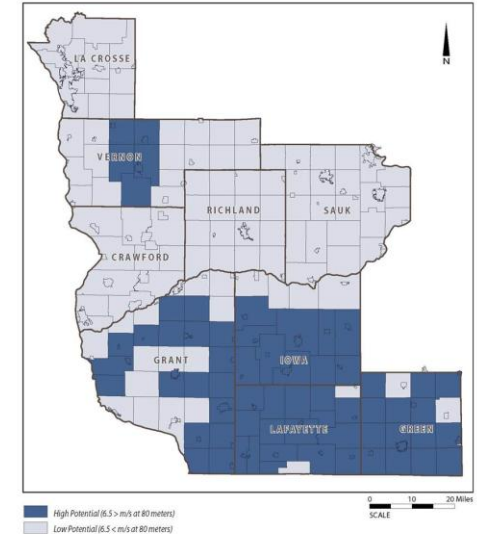
Troy Maggied
t.maggied@swwrpc.org

Karen Rogulja
k.rogulja@swwrpc.org

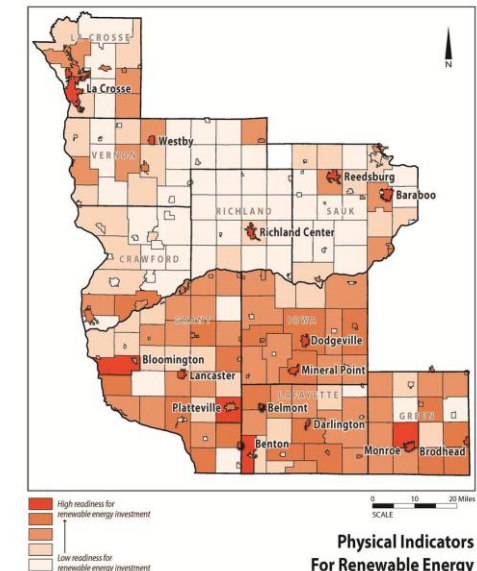


Accomplishments (Year 1)

- Cultivated local relationships & established buy-in
- Data Collection
 - Renewable Energy Opportunity Plan
 - 8,361 coded policies from 148 comprehensive plans (all comp plans in region)
 - 100+ data layers in GIS, including zoning, parcels, and tax assessment data for five counties



Physical Wind Indicators



Physical Indicators
For Renewable Energy

Accomplishments (Year 2)

- Technical reports on 9 topics critical to the region's future

- Cultivator Meetings

- 36 meetings, 100+ participants
 - 9 topic areas



- Scenario Modeling
 - Recommended goals, objectives, & strategies for each topic

Consortium Members

MUNICIPAL GOVERNMENTS

- City of Monroe
- City of Platteville
- City of Lancaster

COUNTY GOVERNMENTS

- Iowa County
- Grant County
- Green County
- Lafayette County
- Richland County

EDUCATIONAL INSTITUTIONS

- Southwest Wisconsin Technical College
- University of Wisconsin-Platteville

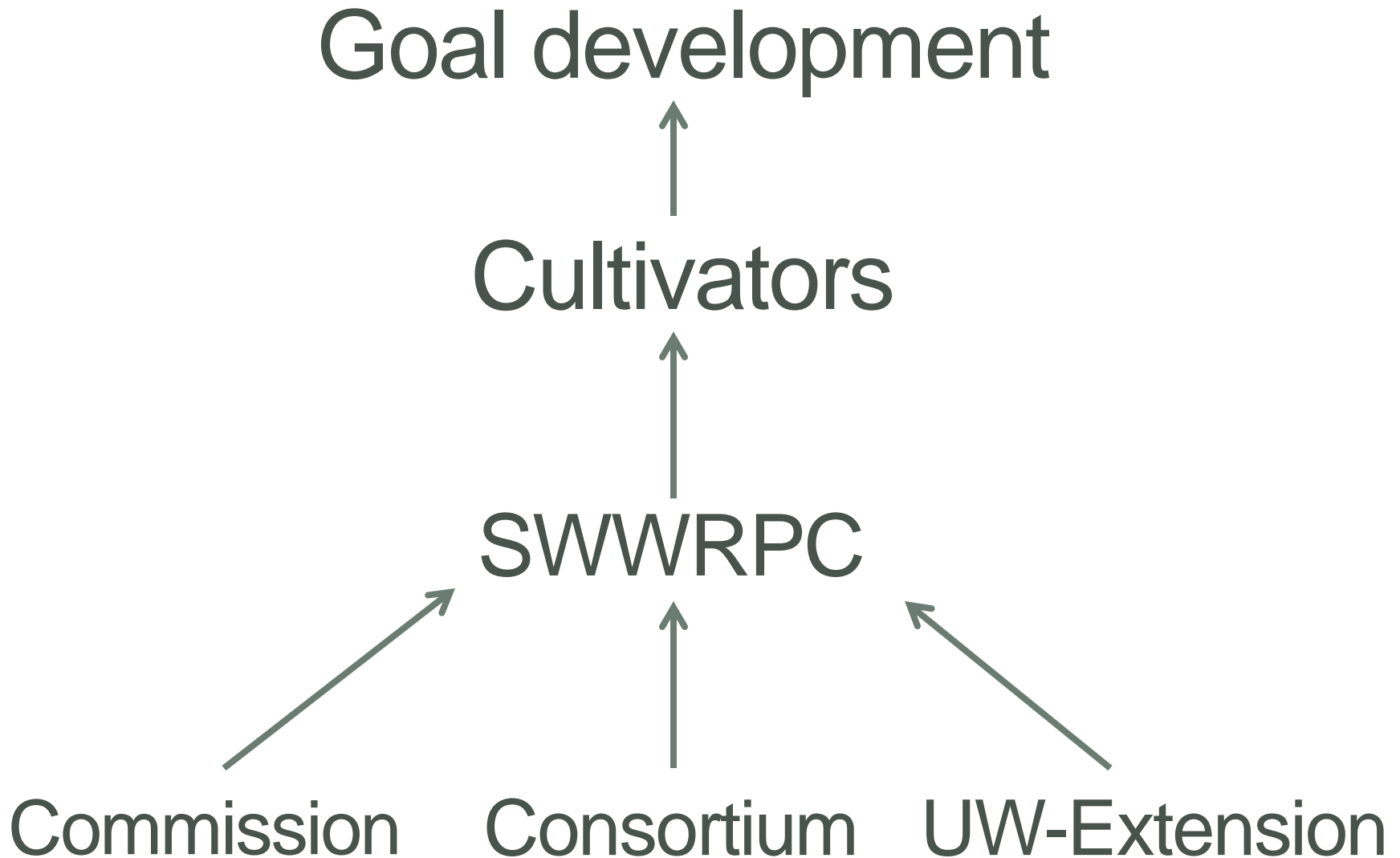
REGIONAL GOVERNMENTS

- East Central Intergovernmental Association/Dubuque MPO
- Southwestern Wisconsin Regional Planning Commission


NPOs AND COMMUNITY-BASED ORGANIZATIONS

- Southwest Transit Team
- Southwest WI Workforce Development
- Southwest WI Community Action Program
- Southwest Badger Research and Conservation Development
- Aging and Disability Resource Center
- Neighborhood Housing Service (Richland County)

Regional cooperation



Communications




Home Background Timeline Cultivation Topics Resources Get Involved SWWRPC

Growing a vision for Southwest Wisconsin ...together.

Grow Southwest Wisconsin is a three-year planning project dedicated to better position our region for the challenges and opportunities of the future. This project, funded by a grant from the US Department of Housing and Urban Development (HUD) is managed by Southwestern Wisconsin Regional Planning Commission (SWWRPC) and overseen by a Consortium of 17 local governments and organizations from across Grant, Green, Iowa, Lafayette, and Richland Counties. Together, we are working on making southwest Wisconsin the best place that it can be for our grandchildren.

Explore the links above to learn more about the project and [get involved](#).

Cultivation meetings have started! Click on the below links to learn more about each of our nine cultivation topics.



Agriculture



Business & Industry




Culture & Creativity




Education




Energy & Utilities



Health & Human Services



Housing



Nature & the Environment



Transportation

More Information

[General Information Brochure](#) (pdf)

[2012 Cultivator Meeting Schedule](#) (pdf)

[Southwestern Wisconsin Regional Profile](#) (pdf)

2013 Build Partnerships

- Regional goal prioritization
- Continued networking
- Final plan document
- Work with partners to implement plan recommendations



Visit us online

www.growsouthwest.org

Contact us

Troy Maggied

t.maggied@swwrpc.org

Karen Rogulja

k.rogulja@swwrpc.org

