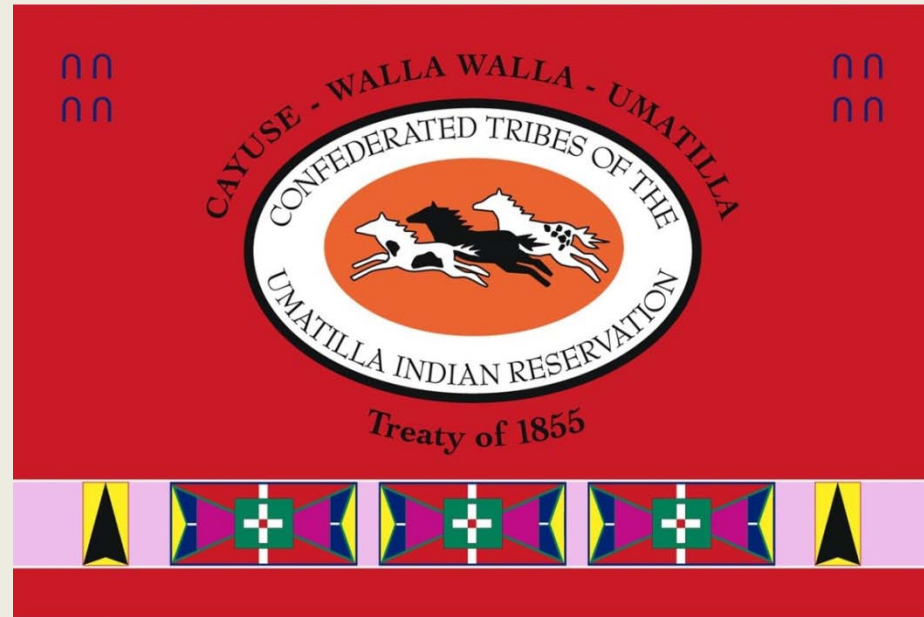


Tribes and Sustainable Development Workshop July 26, 2012

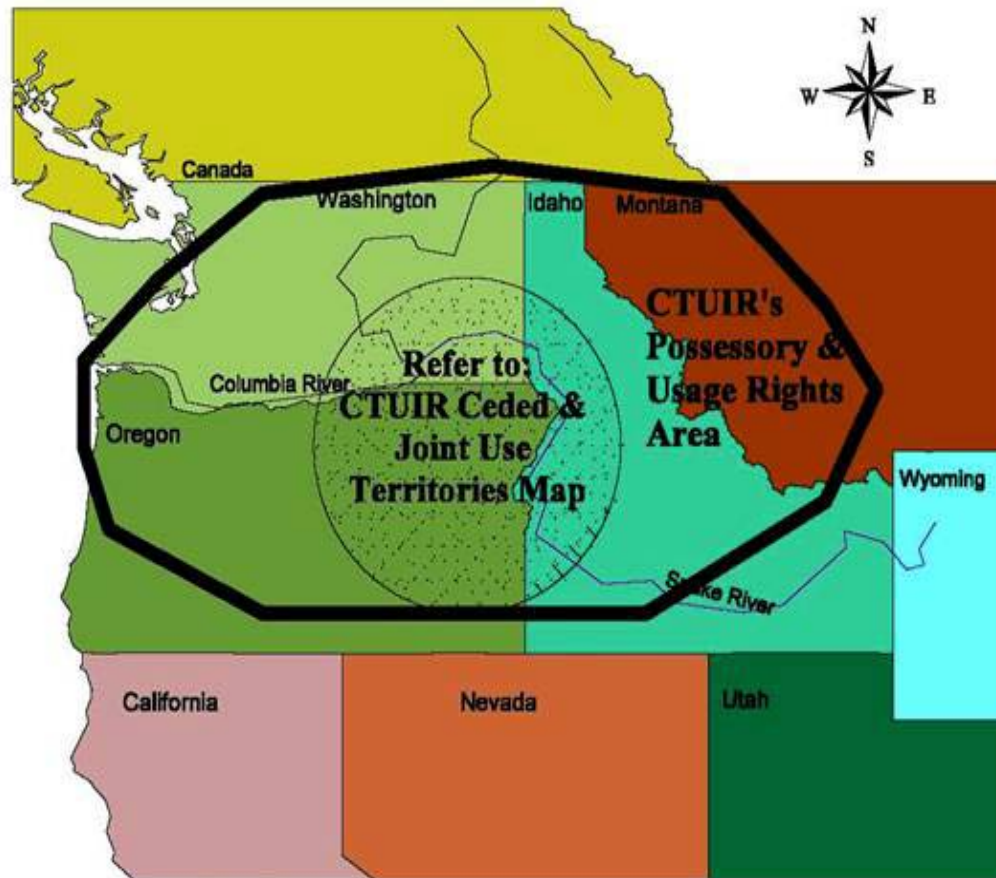
SUSTAINABLE TRIBAL PLANNING



Confederated Tribes of the Umatilla Indian Reservation
Jim Beard, Comprehensive Planning Manager

Market Sustainability Area

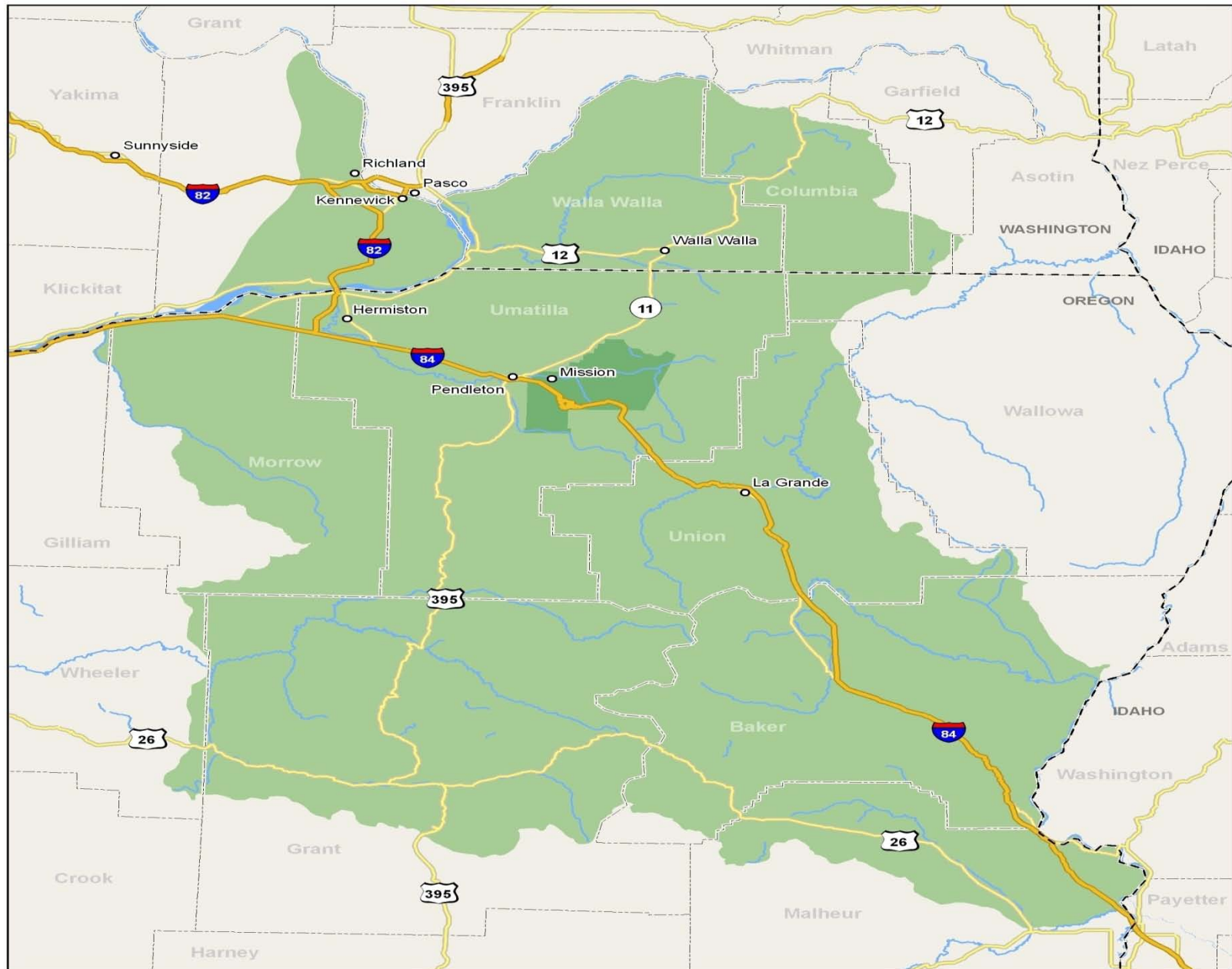
FIGURE 2 - CTUIR POSSESSORY & USAGE AREA



Note: This figure has been recreated from a map received from the CTUIR Cultural Resources Program. The map indicates the Possessory & Usage Rights Area recognized in the Treaty of 1855 and Docket 264 of the Indian Claims Commission.

Aboriginal Lands

THE CONFEDERATED TRIBES OF THE UMATILLA INDIAN RESERVATION



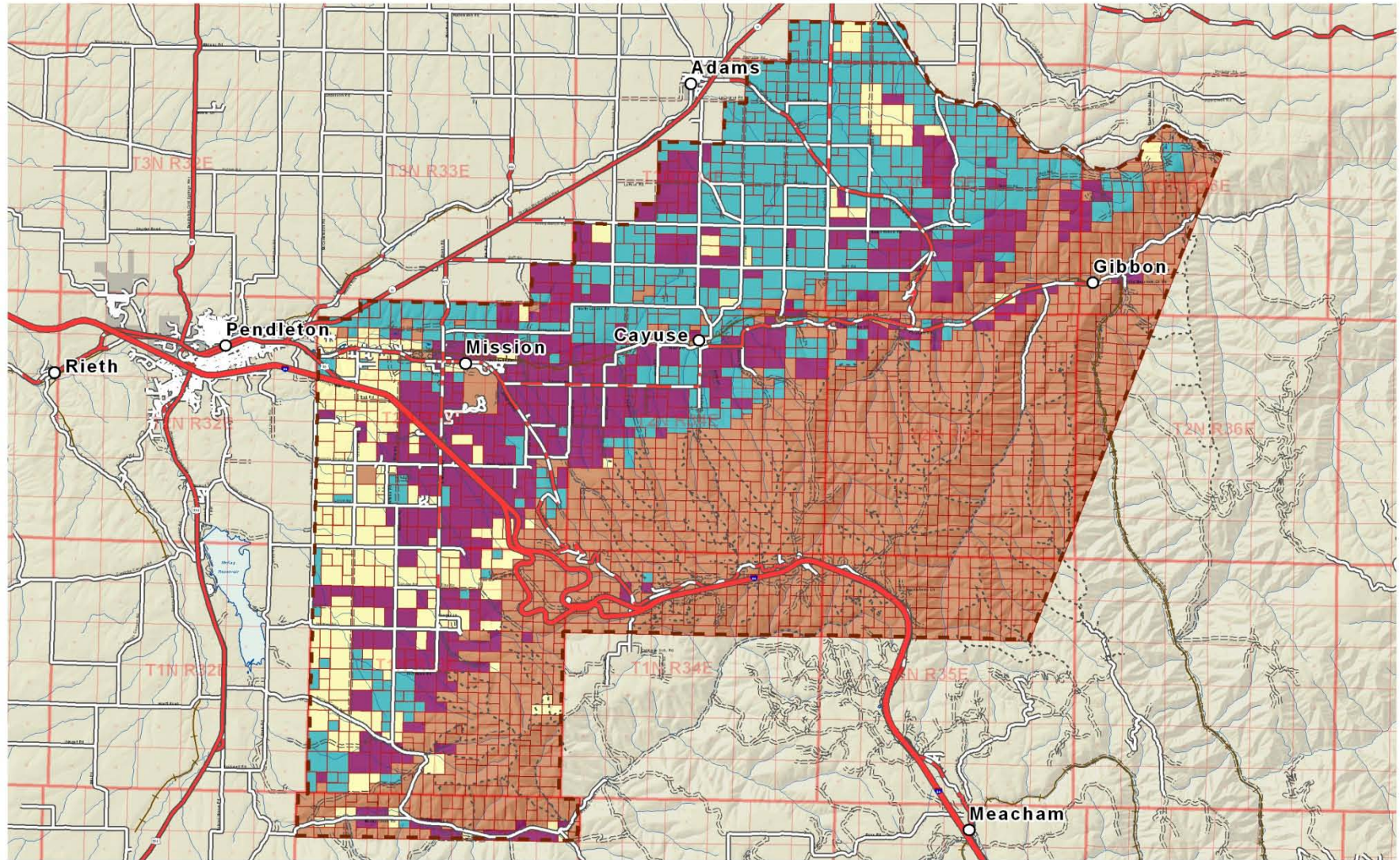
0 10 20 30 40 50 Miles

--- State Boundary
--- County Boundary

Aboriginal Boundary
Today's Reservation

ORIGINAL ALLOTMENTS

Confederated Tribes of the Umatilla Indian Reservation



- | | |
|----------------------|------------------------|
| Tribe | Interstate |
| Cayuse | Primary Hard Surface |
| Umatilla | Secondary Hard Surface |
| Walla Walla | Light Duty Road |
| Unknown | Unimproved Road |
| Reservation Boundary | Trail |

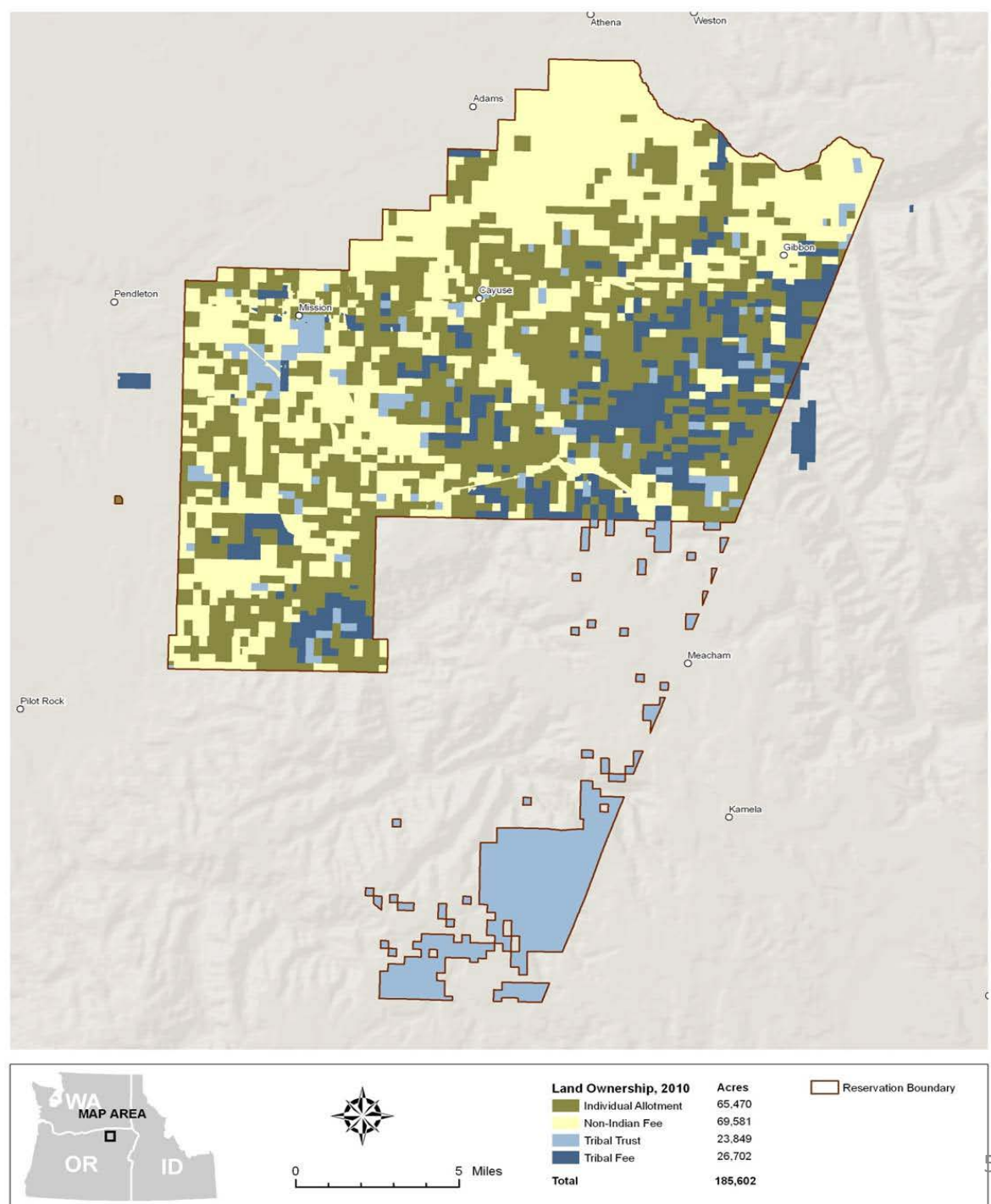
Slater Allotment Act of 1885
Dawes Allotment Act of 1887



Map produced by the Confederated Tribes of the Umatilla Indian Reservation GIS Program. Data depicted here is preliminary and has not been field verified. No warranty is made for this information beyond the purpose intended by the GIS staff of the Confederated Tribes of the Umatilla Indian Reservation. (2010)



Land Ownership Today - checkerboard

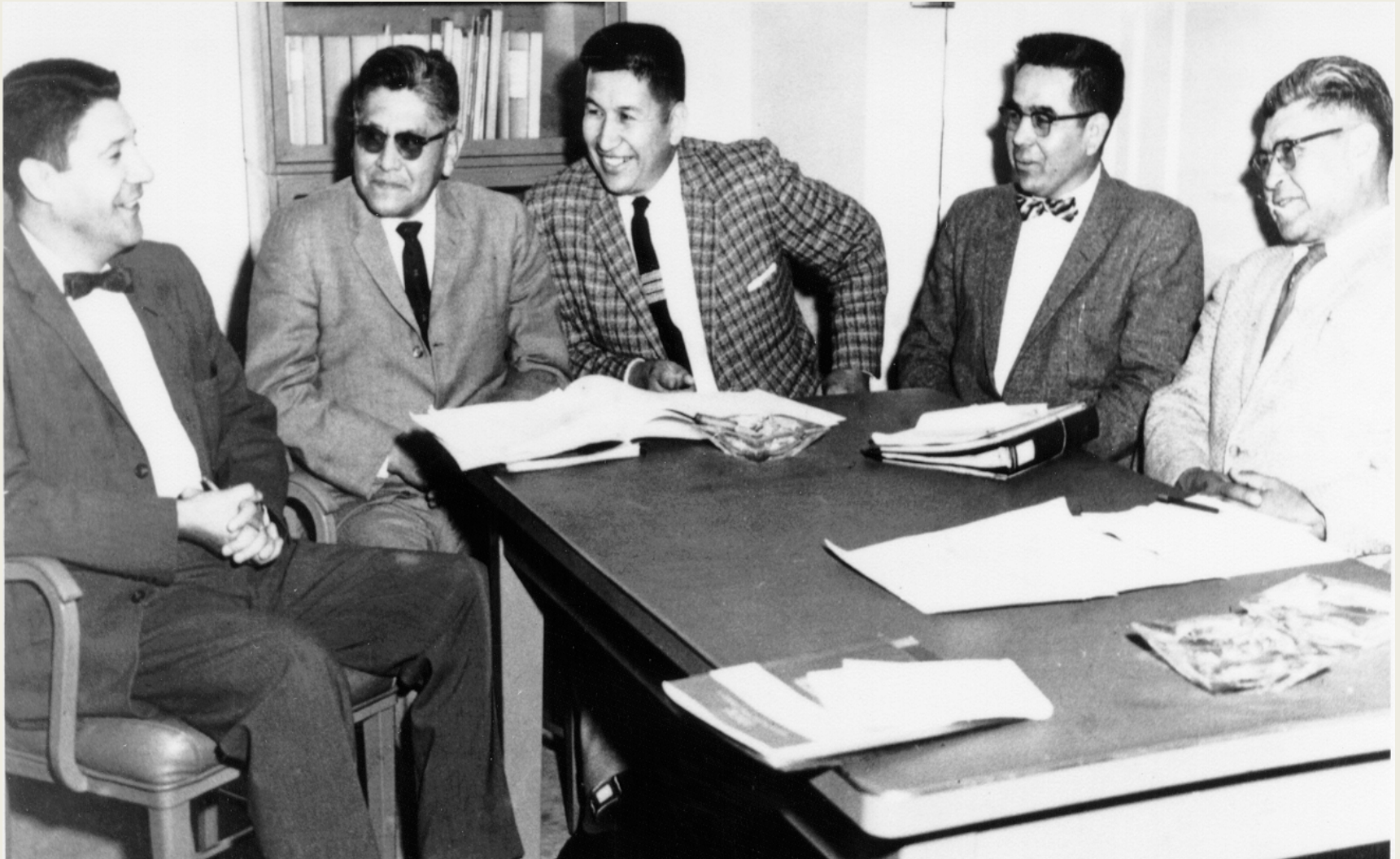


1855 Sustainability Conference

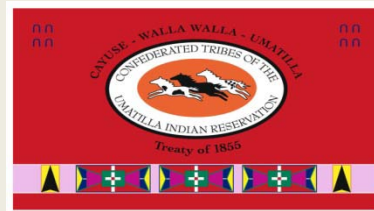


May, 1855. Walla Walla Council. Governor Stevens with Indians.

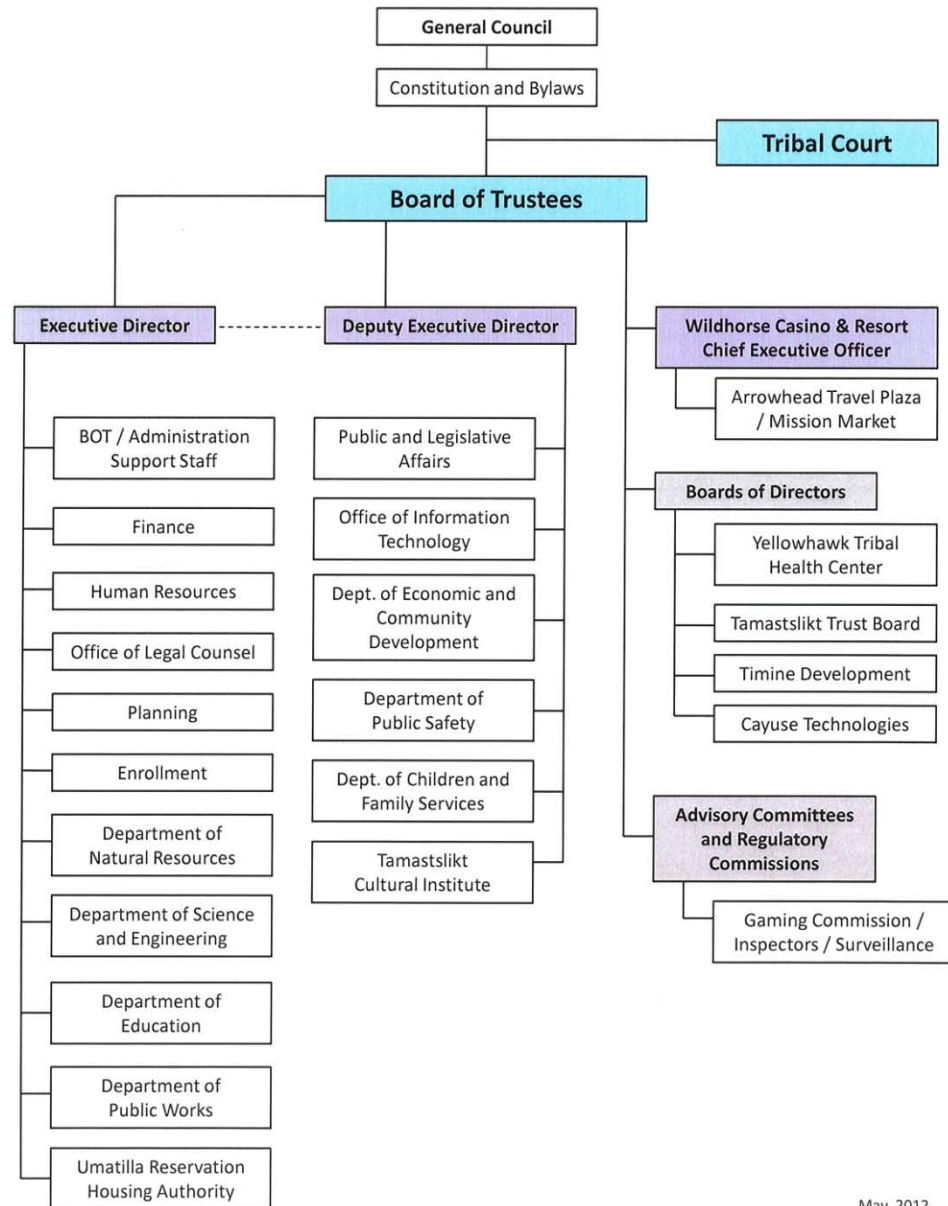
1949 Constitution and By-Laws



Nixyáawii Governance Center

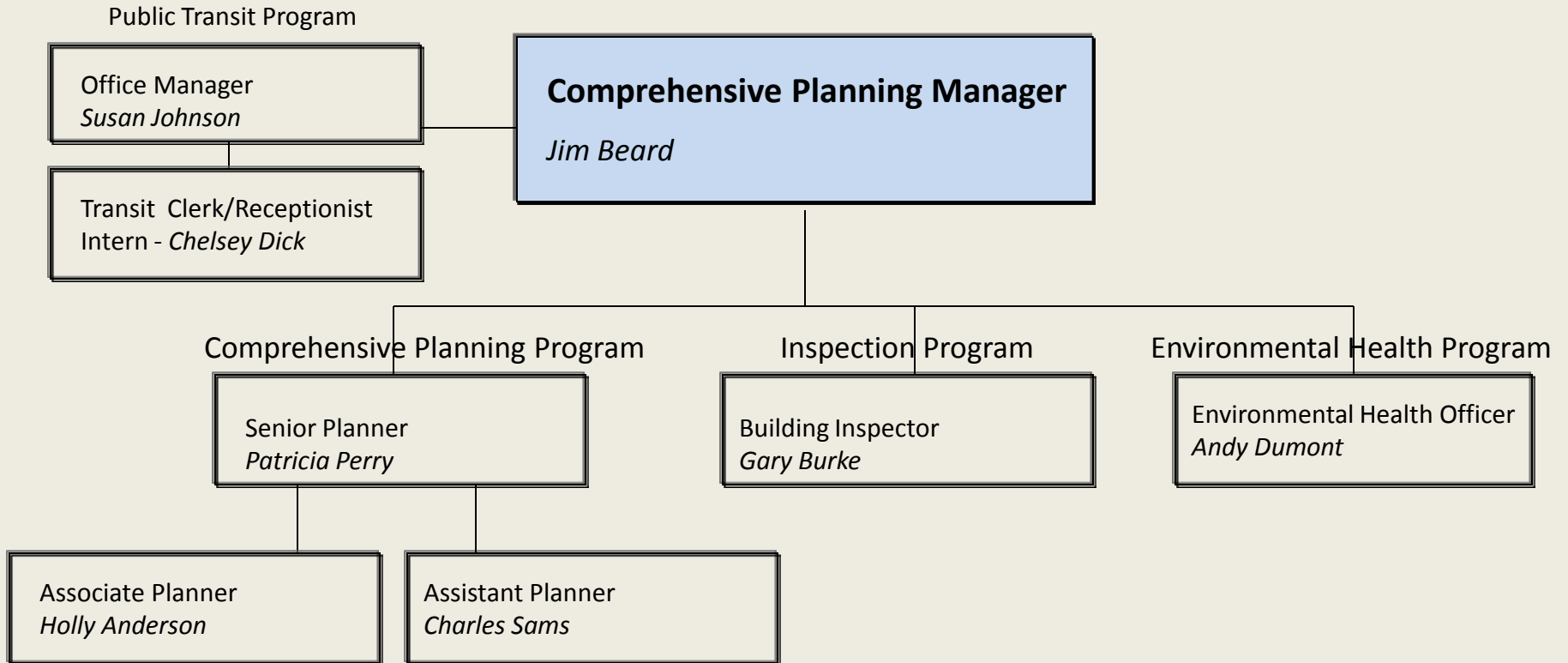


Confederated Tribes of the Umatilla Indian Reservation

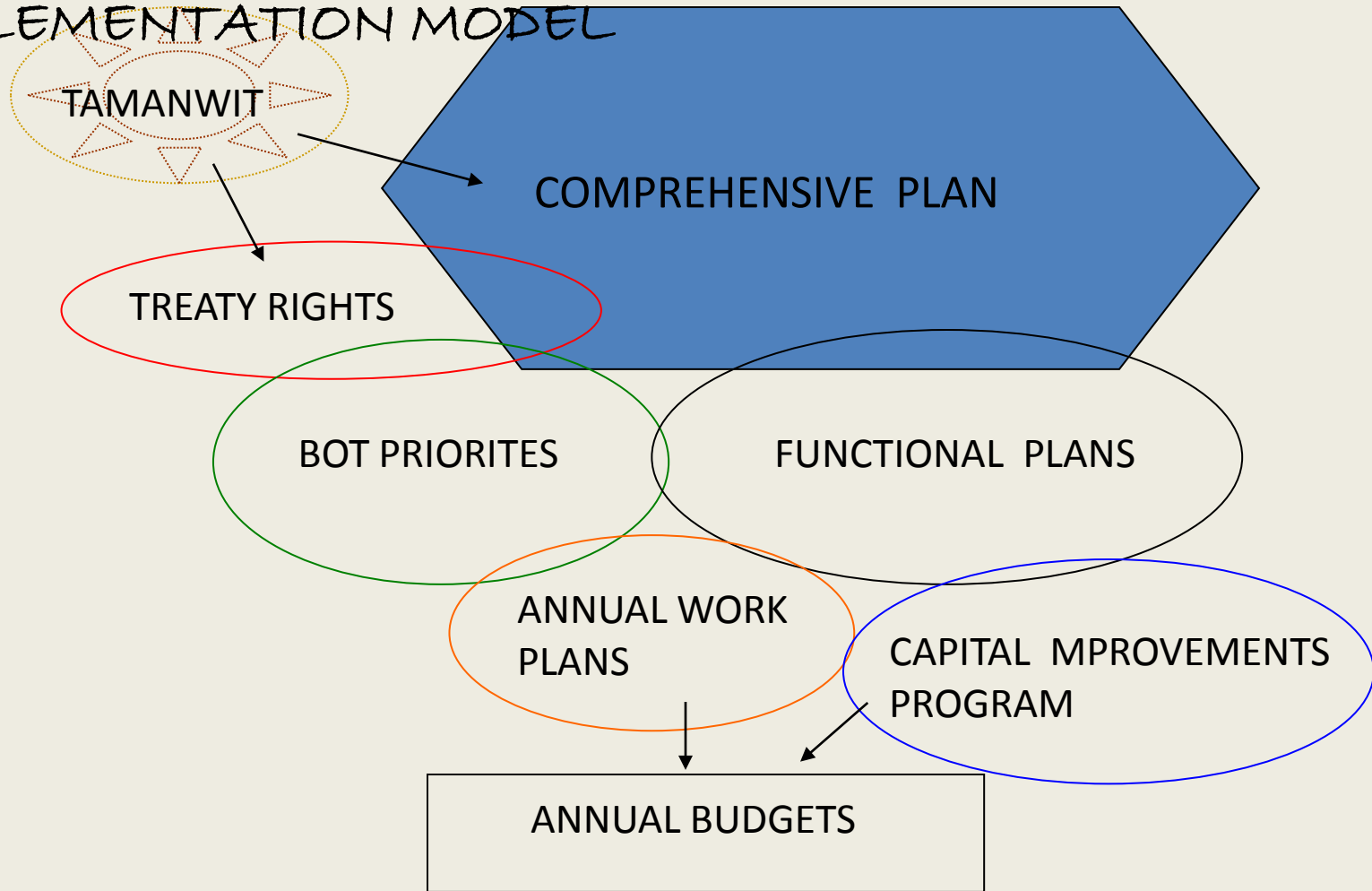


May, 2012

Tribal Planning Office

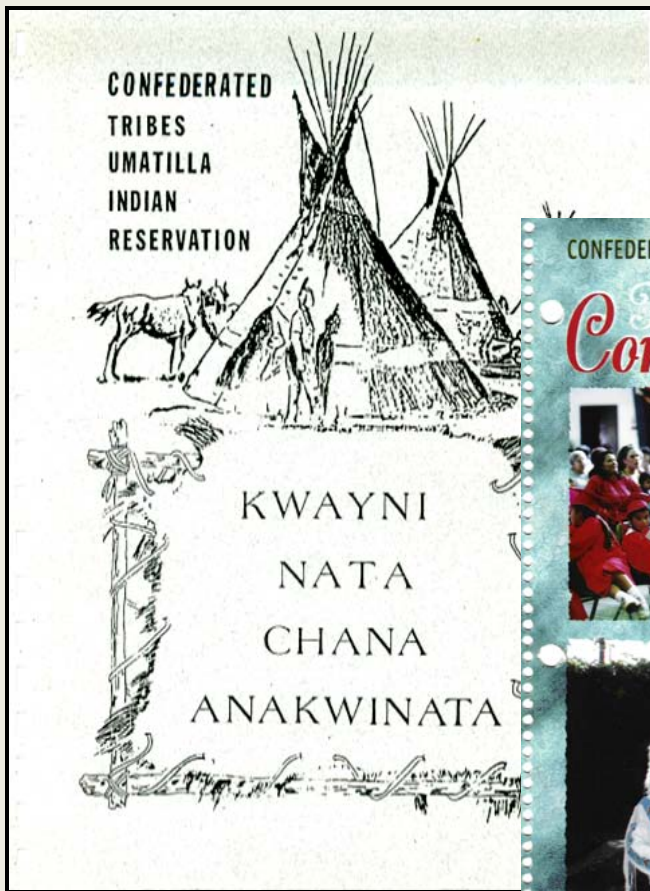


The CTUIR PLANNING AND IMPLEMENTATION MODEL

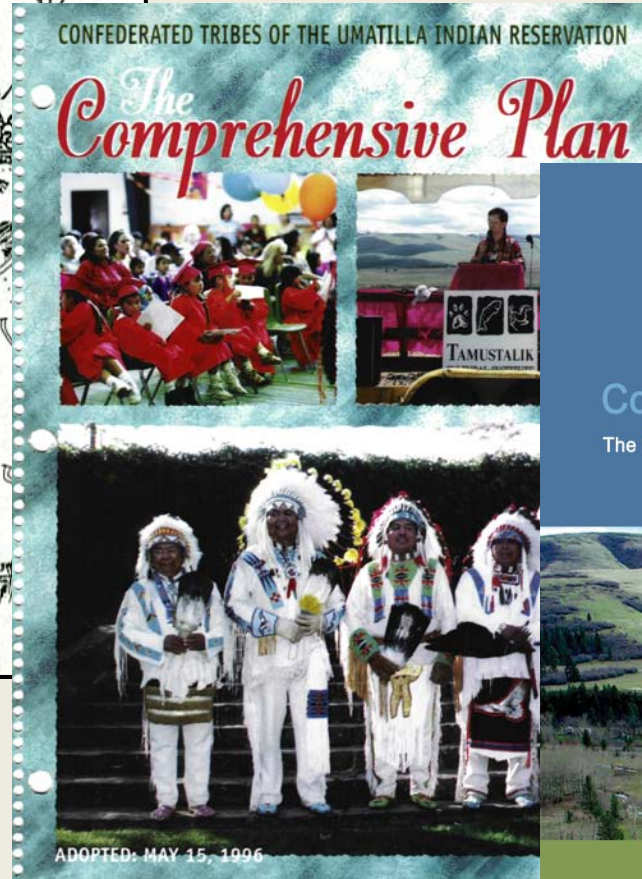


Tamanwit (Columbia River Shaptin) which is literally defined as “throw down” but which means Indian law, natural law, or divine law handed down by the Creator at the beginning of time. Tamanwit is essentially the “rules to live by” that come out of the Indian religion and that are espoused in song and ritual. Tamanwit emerged when life first began on earth. This was the time when Natiitayt, “the people” received spirit and law.

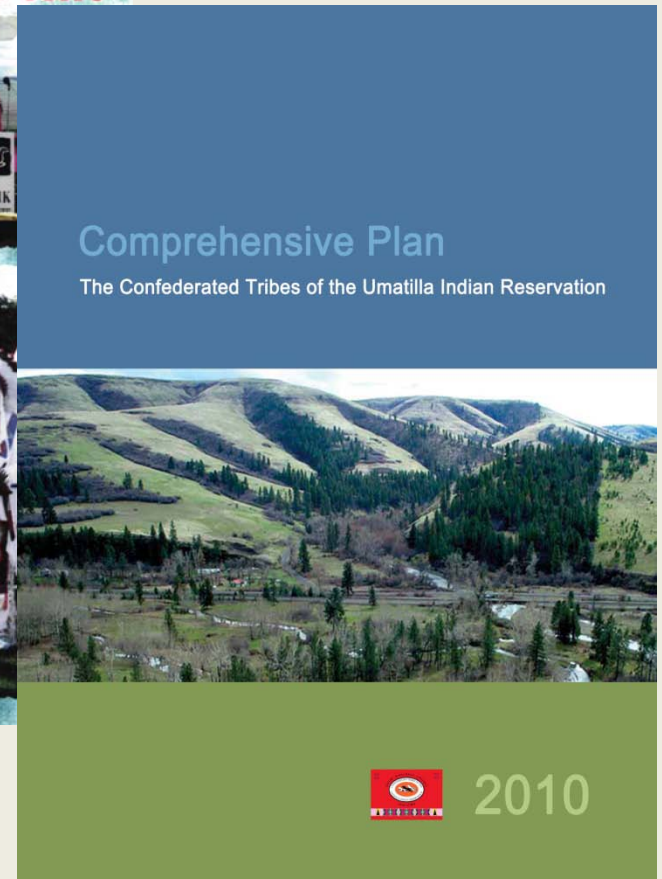
CTUIR Comprehensive Plans



1979

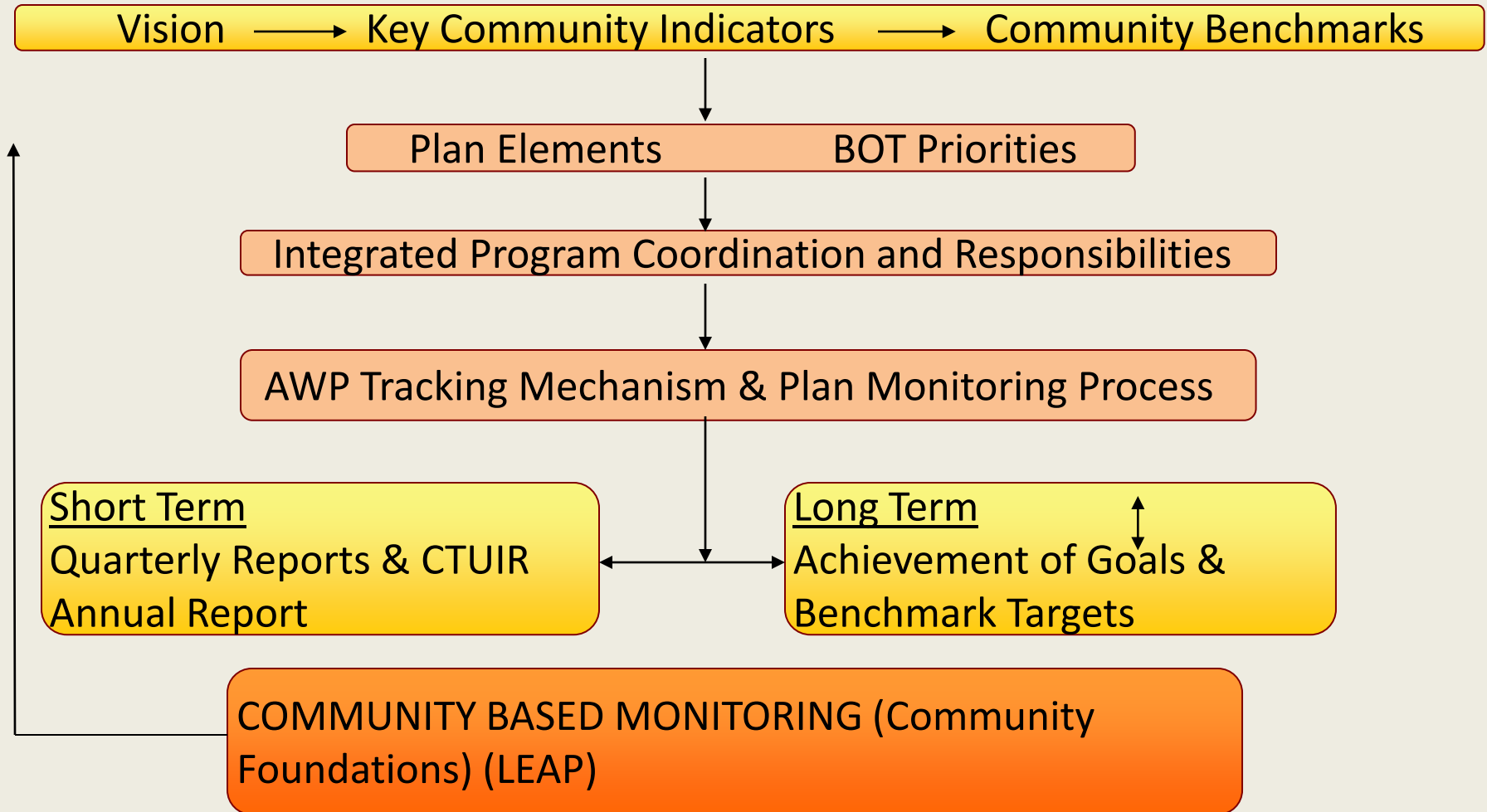


1996



2010

COMPREHENSIVE PLAN GOAL ACHIEVEMENT AND MONITORING PROCESS



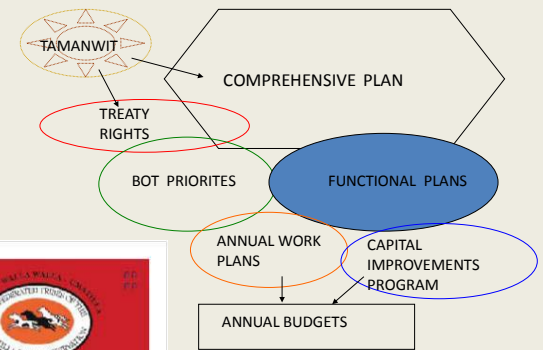
The Mission Community Plan



Confederated Tribes of the Umatilla Indian Reservation (CTUIR)
Special Transportation Coordinated Human Services Public
Transportation Plan (3 Year Plan)



Prepared for CTUIR Tribal Planning Office by: Greater Eastern
Oregon Development Corporation and CTUIR Tribal Planning Office



Economic Sovereignty

Confederated Tribes of the Umatilla Indian Reservation
Overall Economic Development Plan, 2010-2015

Adopted November 30, 2009
Resolution # 09-140

This plan was developed with support from

*Economic Development Administration of the
United States Department of Commerce*

*Administration for Native American of the
United States Department of Health and Human Services*

CTUIR Department of Economic and Community Development

Okagaki & Associates

Five Crows Design

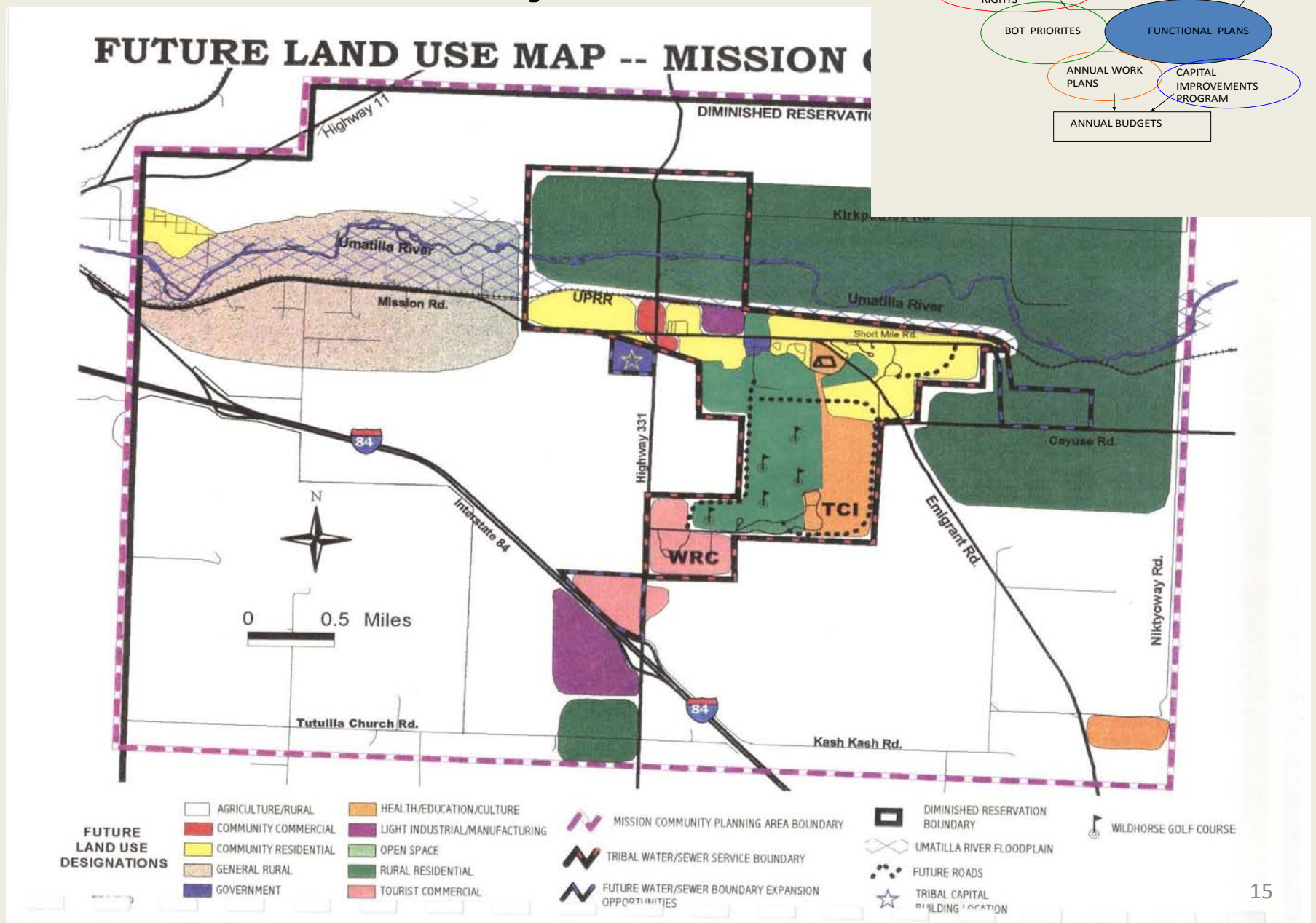
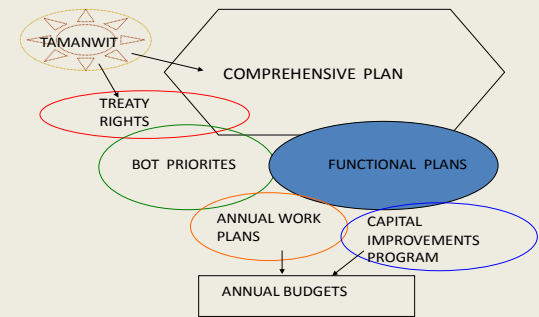
CTUIR

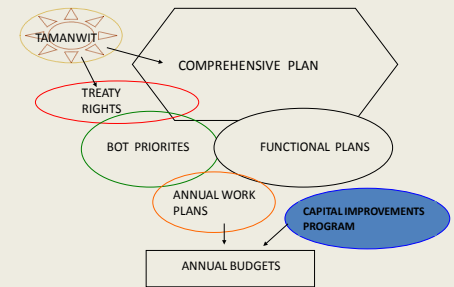


VISIONING & BEAUTIFICATION MASTER PLAN

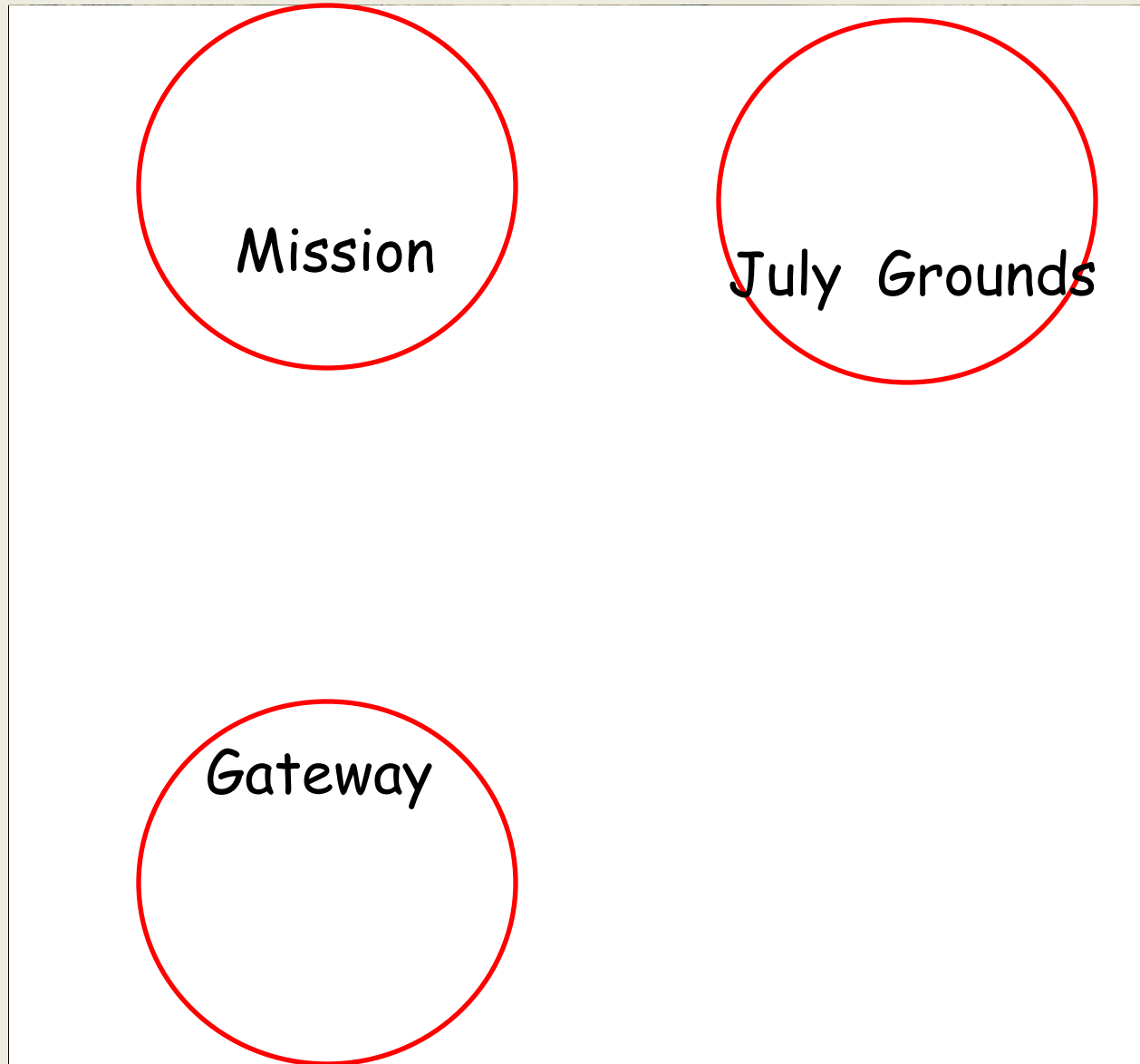
CONFEDERATED TRIBES OF THE UMATILLA INDIAN RESERVATION
MARK A. SEDER ARCHITECTURE + URBAN DESIGN JULY 2009

Mission Community Plan

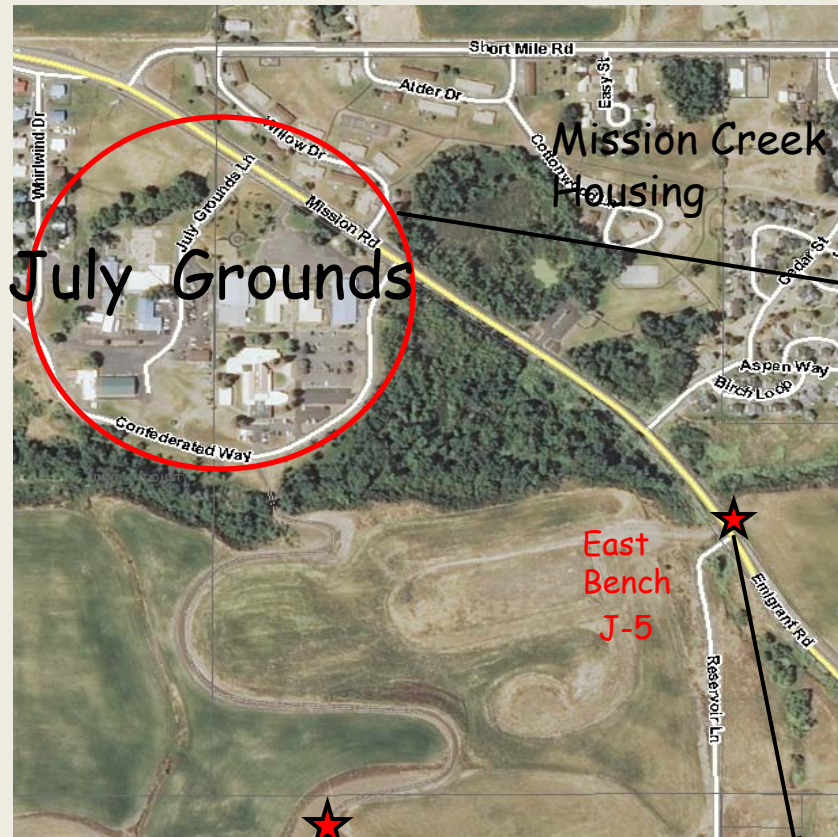




Focus of Neighborhood Improvement Plans



Draft July Grounds Neighborhood Improvement Plan



	Project Description	Source of Funds	Cost
J-1	Yellowhawk Clinic &	IHS/Tribal Funds	\$24,000,000
J-2	Wellness Center		
J-3	Interpretive Kiosk / Rest	BIA / IRR	\$23,000
J-4	Education Center	Tribal Funds	\$7,500,000
J-5	East Bench Infrastructure (for 8 lots)	Tribal Funds	\$146,000
J-6	East Entrance Sign	Tribal Funds	\$4,200



J-3 Interpretive Kiosk/Rest



J-6 East Entrance Sign

1988 Capital Improvement Project Accomplishments

\$\$ Oregon Trail Interpretive Center
☐ Emergency Shelter Care Facility
☐ Regional Home for Youth
☐ Water Treatment Facility (City Water Main)
☐ Adult Softball Field
 \$\$ Water System Improvements/Expansion
 \$\$ Administration Office Building
☐ County/Tribal Detox Center
☐ Alternate Inpatient Treatment Facility
 \$\$ Umatilla Central Hatchery
 \$\$ Minthorn Springs Fish Acclimation Facility
☐ Health Club
☐ Sturgeon Aquaculture Enterprises
 \$\$ Central Computer System
☐ 7 Deep Observation Wells & Well Houses
 \$\$ Police Headquarters
 \$\$ Justice Chambers, Offices, & Court
 \$\$ Parkway (Bike paths, Walking, Trails)
 \$\$ Various Stream Habitat
 \$\$ Range Fences
 \$\$ Bingo/Gaming Facility
☐ Water Park
 \$\$ Public Golf Course

\$\$ Tribal Newspaper
☐ Indian Lake Lodge/Improvements
 \$\$ Radio Station
 \$\$ Motel
 \$\$ Restaurant
☐ Skating Rink
 \$\$ Outdoor Pavilion
 \$\$ Mission Market Expansion
☐ General Storage
☐ Construction Company
 \$\$ Industrial Park
 \$\$ Cultural Museum
 \$\$ Law & Order Complex
☐ Treatment/Shelter Facilities
 \$\$ Youth Softball Field
 \$\$ Sewer System
 \$\$ Improvements
 \$\$ Youth Drop-In Center
 \$\$ Halfway House
 \$\$ Umatilla Hatchery Satellite Facility
 \$\$ Fish Processing Facility
☐ Bonifer Pond Tax Lot
 \$\$ Office Space, Fisheries
 \$\$ Garage, Shop & Storage for FWC & Fisheries

\$\$ Emergency Dispatch
☐ Stream Gauging System
 \$\$ Office Space, DNR/Land/Water
☐ Water Development & Protection of Spring Sources
☐ Television Station
☐ Cable TV Franchise
 \$\$ PFM Storage Expansion
☐ Forest Products Facility
☐ Swimming Pool
 \$\$ RV Park
 \$\$ Public Works Offices
☐ Jail
 \$\$ Maintenance Shop (Out to Bid)
 \$\$ Administration Building
 \$\$ Personnel Housing Complex
 \$\$ Trusses for Conference Room, Yellowhawk Clinic
 \$\$ Mission Highway Widening
 \$\$ Various Office Space
 \$\$ Fire Protection Facility
☐ Archive Library

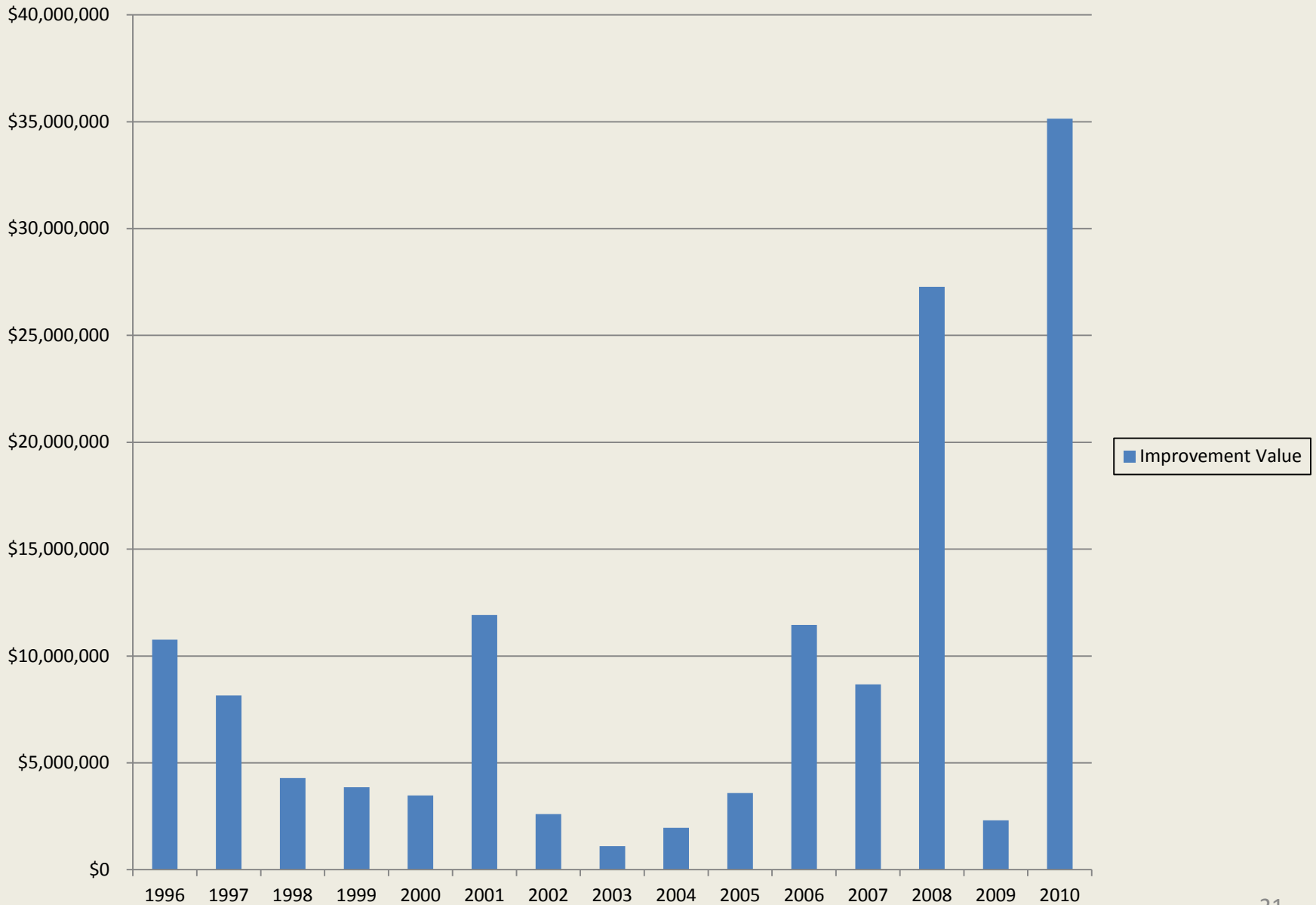
TOTAL VALUE = \$145,856,242

% CIP projects completed: 63%

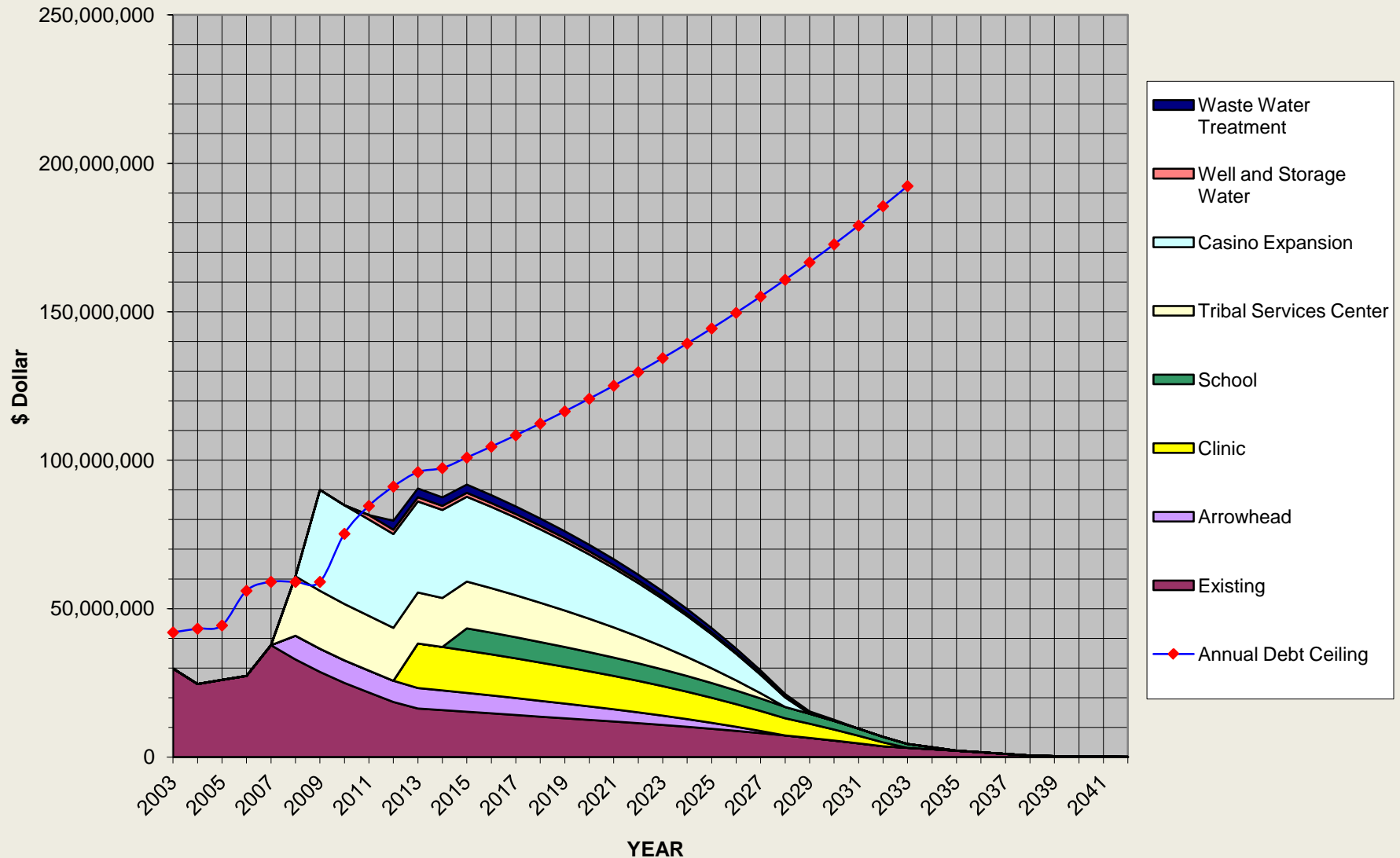
Capital Projects Schedule

CAPITAL PROJECTS PLAN															
Schedule		2008				2009					2010				2011
	Est.Cost	Jan./Mar.	Apr./June	July/Sept.	Oct./Dec.	Jan./Mar.	Apr./June	July/Sept.	Oct./Dec.	Jan./Mar.	Apr./June	July/Sept.	Oct./Dec.	Jan./Mar.	Apr./June
Community Development Needs															
Government - Tribal Sevicees Cente	\$20m.	Design				Construction									Move
Costs by Element			\$1m.		\$2m				\$9m.				\$8m.		
Health - Wellness Clinic	\$12.0 m	Design								Construction					
Costs by Element					\$300k	\$700k							\$5m	\$6m	
Education - Community School	\$7.5m.														
Costs by Element															
Housing - Wy-It View Subdivision	\$1.5m.			Construction						Move In					
Costs by Element					\$1.5m.										
Water System Imprvmnt-Well/Res South mkt rd	\$2.5m													Design	Const
Costs by Element														\$250k	\$2.25m
Waste Water Treatment Facility	\$5.1m														Design
															\$500k
Economic Needs															
Arrowhead Truck Stop	\$8m	Design	Construction			Move In									
			\$8m												
Casino Expansion & New Hotel	\$34m	Design					Construction				Move In				
				\$1m		\$2m	\$5m	\$10m	\$10m	\$6m					
Casino Infastructure	\$5m	Design		Construction				Move In							
			\$200k	\$1.7m	\$1m		\$2.1m								
TOTAL	95.6														
Annual Costs					\$16.7 M				\$38.8m.				\$19m.		

Construction Improvement Value by Year



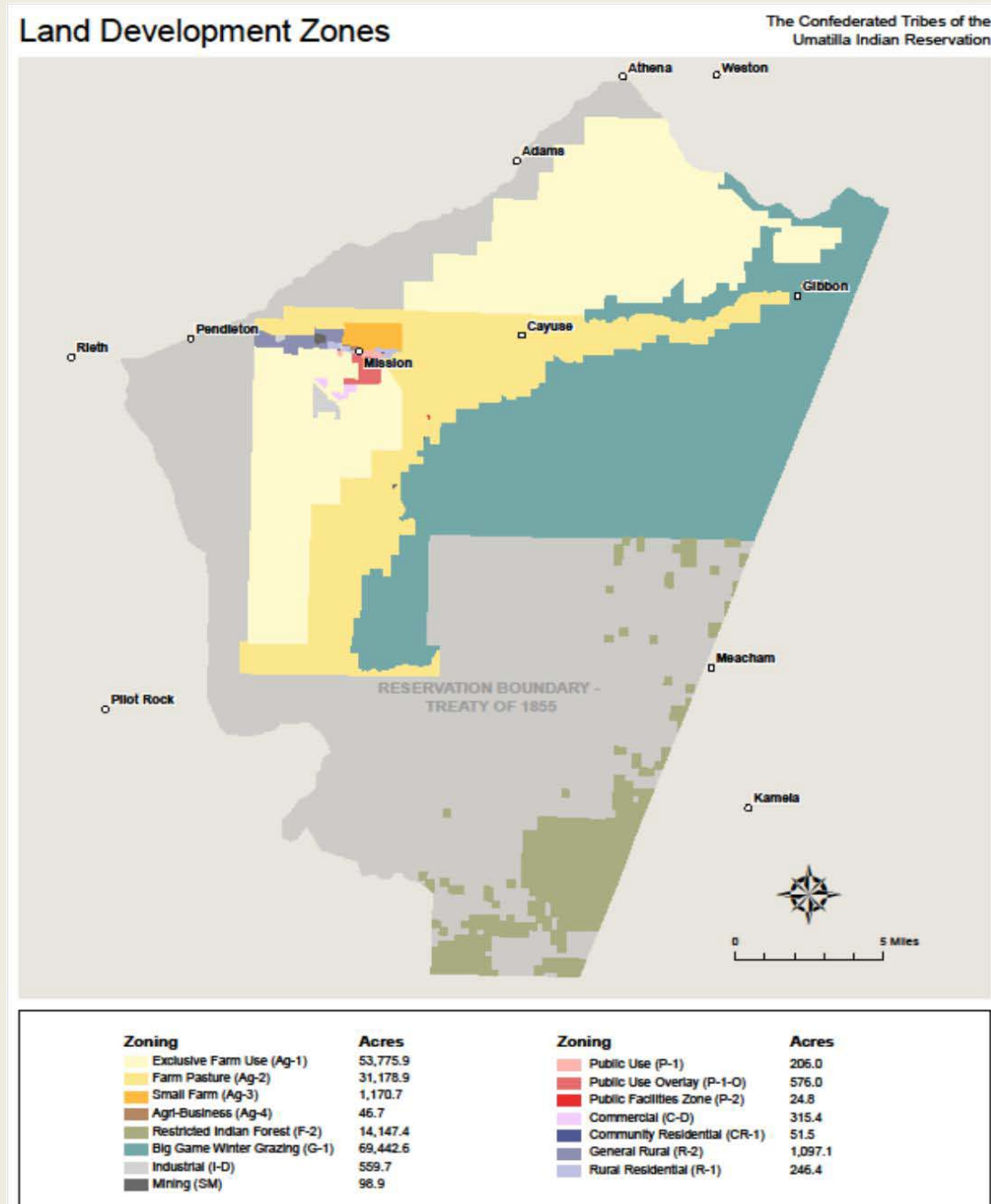
Existing and Proposed Debt and Debt Ceiling



Sustaining Tribal Culture

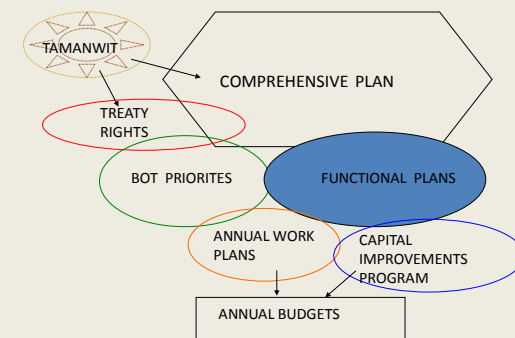


Land Use Control – Negotiated Sovereignty



Non-Sustainable Zoning





CTUIR

VISIONING & BEAUTIFICATION MASTER PLAN

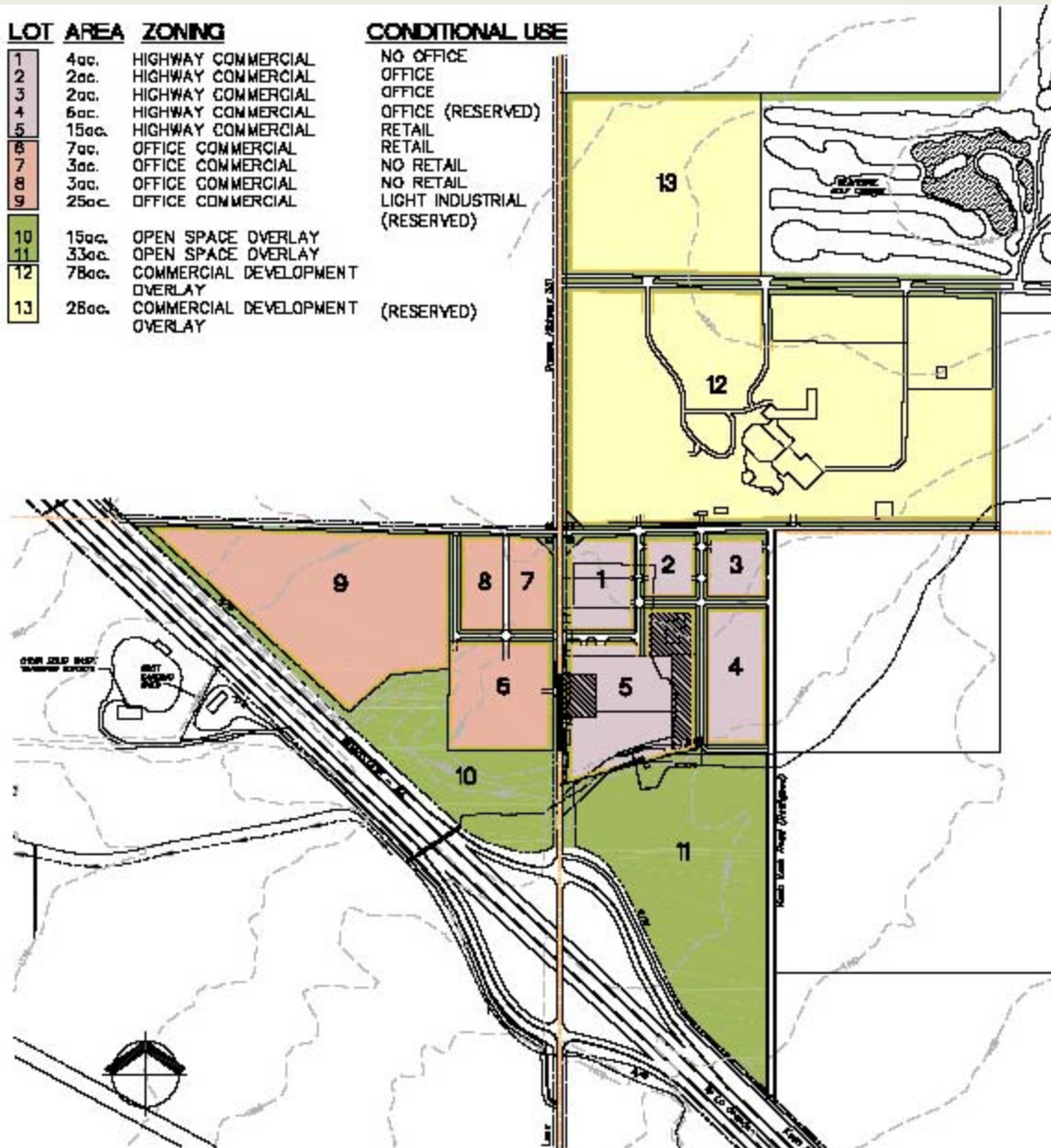
CONFEDERATED TRIBES OF THE UMATILLA INDIAN RESERVATION
 MARK A. SEDER ARCHITECTURE + URBAN DESIGN JULY 2009

Diversifying the Economy

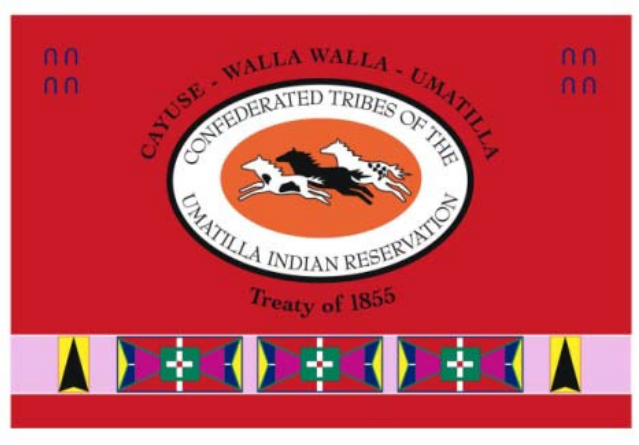


GATEWAY Land Use Map

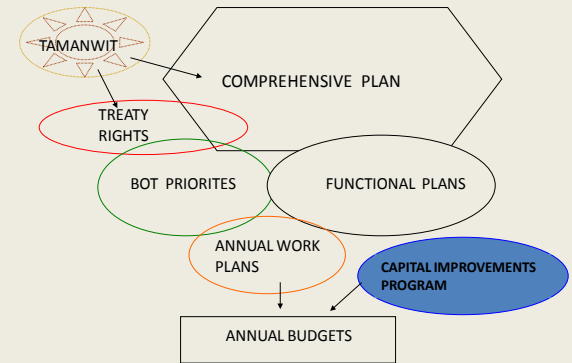
LOT	AREA	ZONING	CONDITIONAL USE
1	4ac.	HIGHWAY COMMERCIAL	NO OFFICE
2	2ac.	HIGHWAY COMMERCIAL	OFFICE
3	2ac.	HIGHWAY COMMERCIAL	OFFICE
4	6ac.	HIGHWAY COMMERCIAL	OFFICE (RESERVED)
5	15ac.	HIGHWAY COMMERCIAL	RETAIL
6	7ac.	OFFICE COMMERCIAL	RETAIL
7	3ac.	OFFICE COMMERCIAL	NO RETAIL
8	3ac.	OFFICE COMMERCIAL	NO RETAIL
9	25ac.	OFFICE COMMERCIAL	NO RETAIL LIGHT INDUSTRIAL (RESERVED)
10	15ac.	OPEN SPACE OVERLAY	
11	33ac.	OPEN SPACE OVERLAY	
12	78ac.	COMMERCIAL DEVELOPMENT OVERLAY	
13	28ac.	COMMERCIAL DEVELOPMENT OVERLAY	(RESERVED)



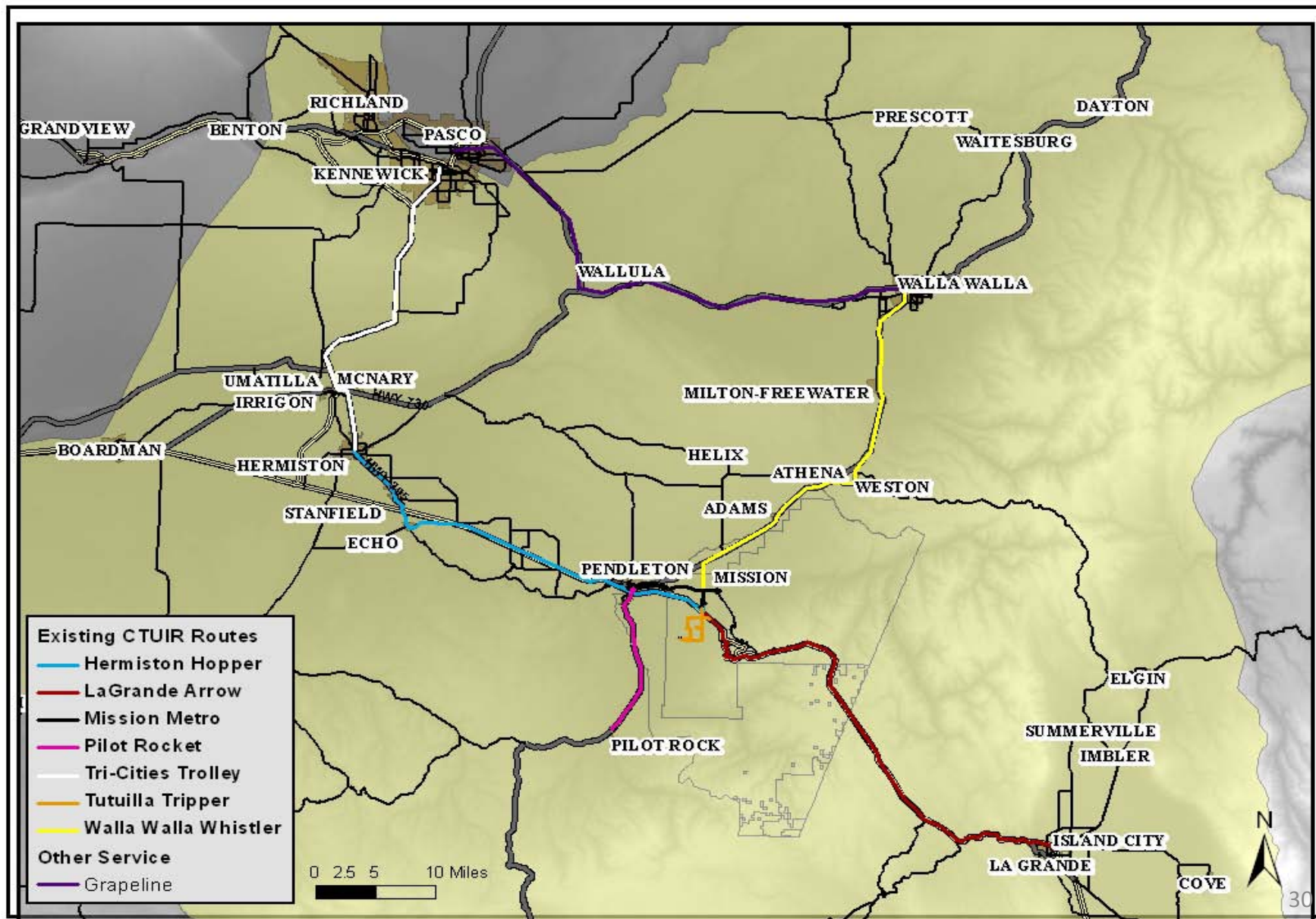
Confederated Tribes of the Umatilla Indian Reservation Special Transportation Coordinated Human Services Public Transportation Plan (3 Year Plan)



Prepared for CTUIR Tribal Planning Office by:
Greater Eastern Oregon Development Corporation
and CTUIR Tribal Planning Office



Transit Service Area Map



Honoring Nations Video Project

Lessons in Nation Building



Honoring Nations

The Harvard Project on American Indian Economic Development

2010 Honors Award



Tribal Planning Office
Confederated Tribes of the Umatilla Indian Reservation

New Transit Headquarters



CTUIR TRANSIT & FLEET MAINTENANCE FACILITY

CONFEDERATED TRIBES OF THE UMATILLA INDIAN RESERVATION

SEDER ARCHITECTURE + URBAN DESIGN

SEPTEMBER 1, 2011

KCUW Public Service Announcements



URHA Bus Shelters



Community Design Element

TAMANWIT

COMPREHENSIVE PLAN

TREATY
RIGHTS

BOT PRIORITIES

FUNCTIONAL PLANS

ANNUAL WORK
PLANS

CAPITAL
IMPROVEMENTS
PROGRAM

ANNUAL BUDGETS



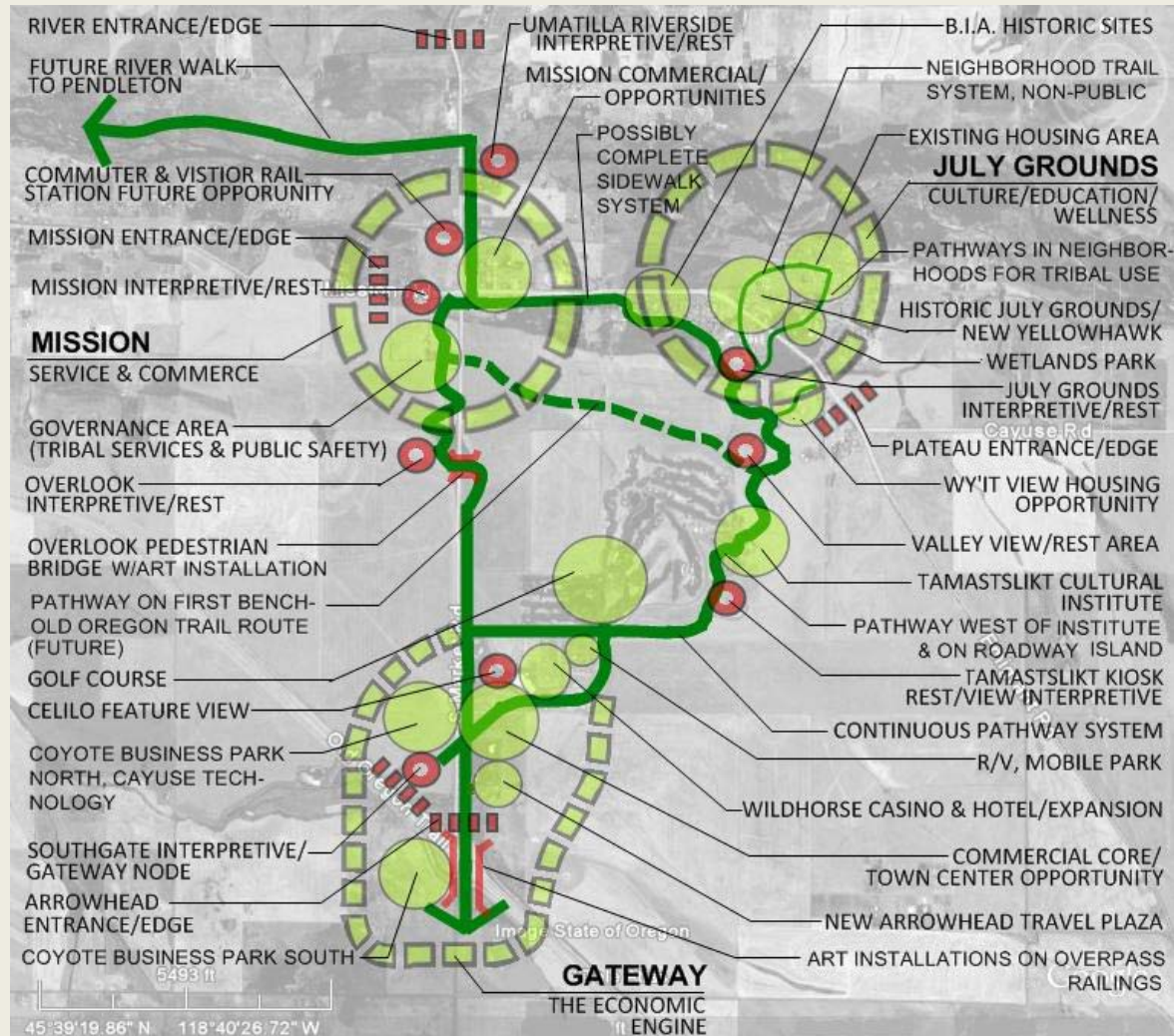
CTUIR

VISIONING & BEAUTIFICATION MASTER PLAN

CONFEDERATED TRIBES OF THE UMATILLA INDIAN RESERVATION
SEDER ARCHITECTURE + URBAN DESIGN
JUNE 2009



Path, Edge, Entrance & Node Concepts



VISIONING & BEAUTIFICATION MASTER PLAN

CONFEDERATED TRIBES OF THE UMATILLA INDIAN RESERVATION
SEDER ARCHITECTURE + URBAN DESIGN
JULY 2009

Highway Bridge



CTUIR

VISIONING & BEAUTIFICATION MASTER PLAN

CONFEDERATED TRIBES OF THE UMATILLA INDIAN RESERVATION
SEDER ARCHITECTURE + URBAN DESIGN
JULY 2009

West Edge and Entrance



CTUIR MISSION GATEWAY IMPROVEMENTS

CONFEDERATED TRIBES OF THE UMATILLA INDIAN RESERVATION SEDER ARCHITECTURE + URBAN DESIGN OCTOBER 24, 2010



EXISTING



EARLY SKETCH

CTUIR

VISIONING & BEAUTIFICATION MASTER PLAN

CONFEDERATED TRIBES OF THE UMATILLA INDIAN RESERVATION
SEDER ARCHITECTURE + URBAN DESIGN
JULY 2009



Pedestrian walks and Casino Corridor



CTAIR

VISIONING & BEAUTIFICATION MASTER PLAN

CONFEDERATED TRIBES OF THE UMATILLA INDIAN RESERVATION
SEDER ARCHITECTURE + URBAN DESIGN JULY 2009

CTUIR Comprehensive Plan available at
<http://www.ctuir.org/>

CTUIR-Tribal Planning Office

Jim Beard, AICP

Comprehensive Planning Manager

46411 Timíne Way

Pendleton, OR 97801

P & F: 541-429-7520

Jim Beard@ctuir.org