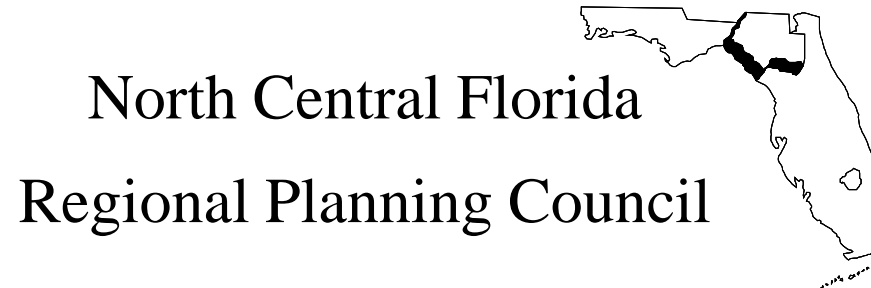


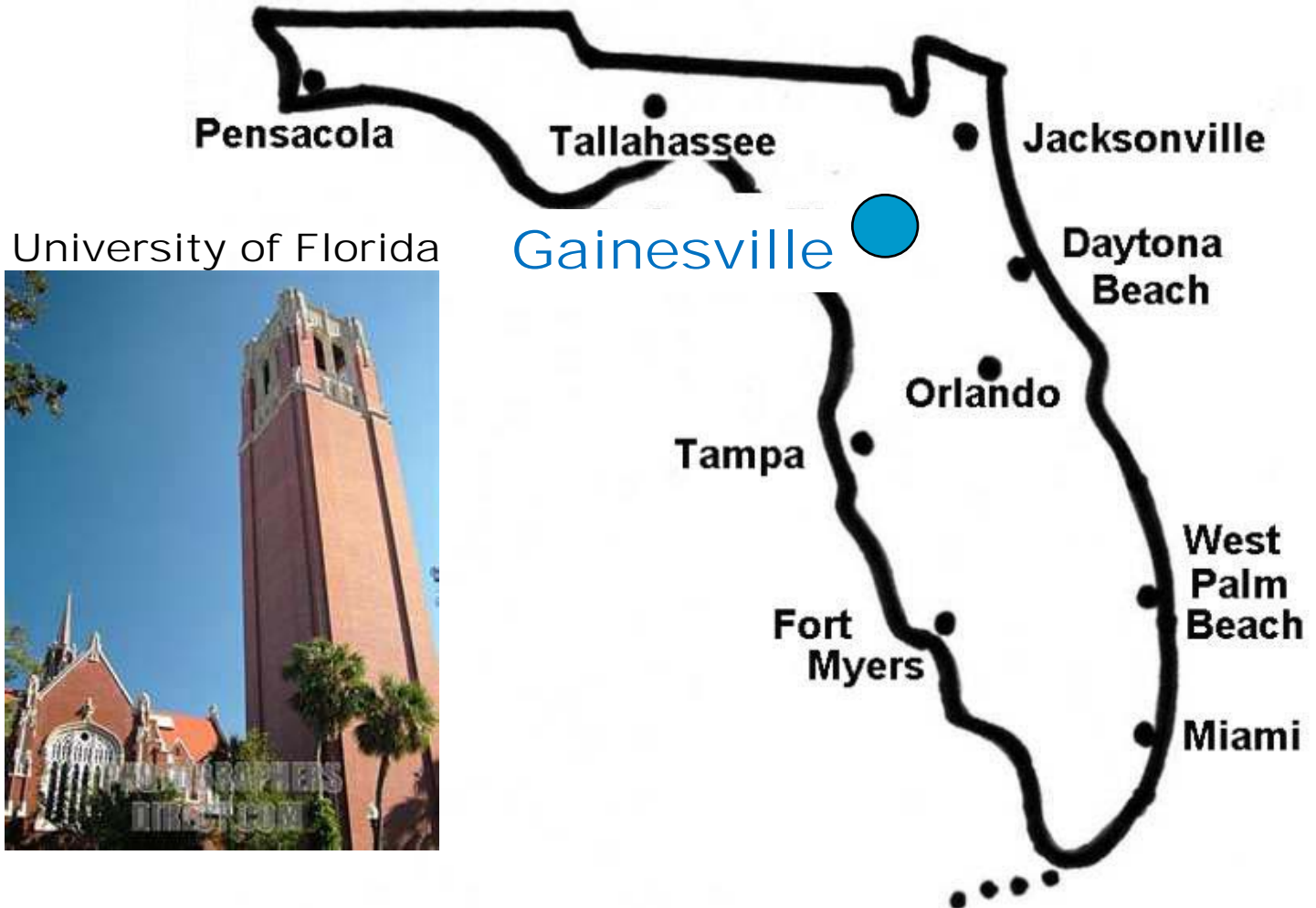
Scenario Planning Training Session

Marlie Sanderson

Director of Transportation Planning



Location Map



University of Florida



Gainesville MPO- Voting Members



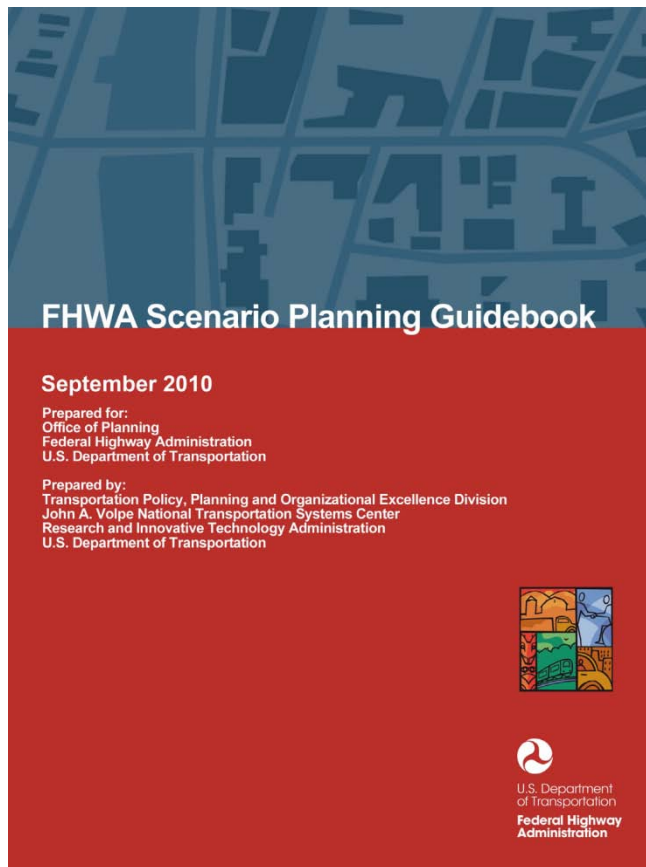
City of Gainesville Commission



Alachua County Commission

Scenario Planning Process

■ 6 Phases



Topics of Discussion

- Phase 1- How should we get started?
- Phase 2- Where are we now?
- Phase 3- Who are we/where do we want to go?
- Phase 4- What could the future look like?
- Phase 5- What impacts will scenarios have?
- Phase 6- How will we reach our desired future?

Topics of Discussion

- Phase 1- How should we get started?
- Phase 2- Where are we now?
- Phase 3- Who are we/where do we want to go?
- Phase 4- What could the future look like?
- Phase 5- What impacts will scenarios have?
- Phase 6- How will we reach our desired future?

Phase 1- Identify objectives

- Minimize the impact of “peak oil.”



Phase 1- Identify anticipated outcomes

- Implement land use mitigation strategies now to get ready for “peak oil”



Topics of Discussion

- Phase 1- How should we get started?
- Phase 2- Where are we now?
- Phase 3- Who are we/where do we want to go?
- Phase 4- What could the future look like?
- Phase 5- What impacts will scenarios have?
- Phase 6- How will we reach our desired future?

Phase 2- Describe current conditons

- Recent growth is moving west to low-density single family suburbs



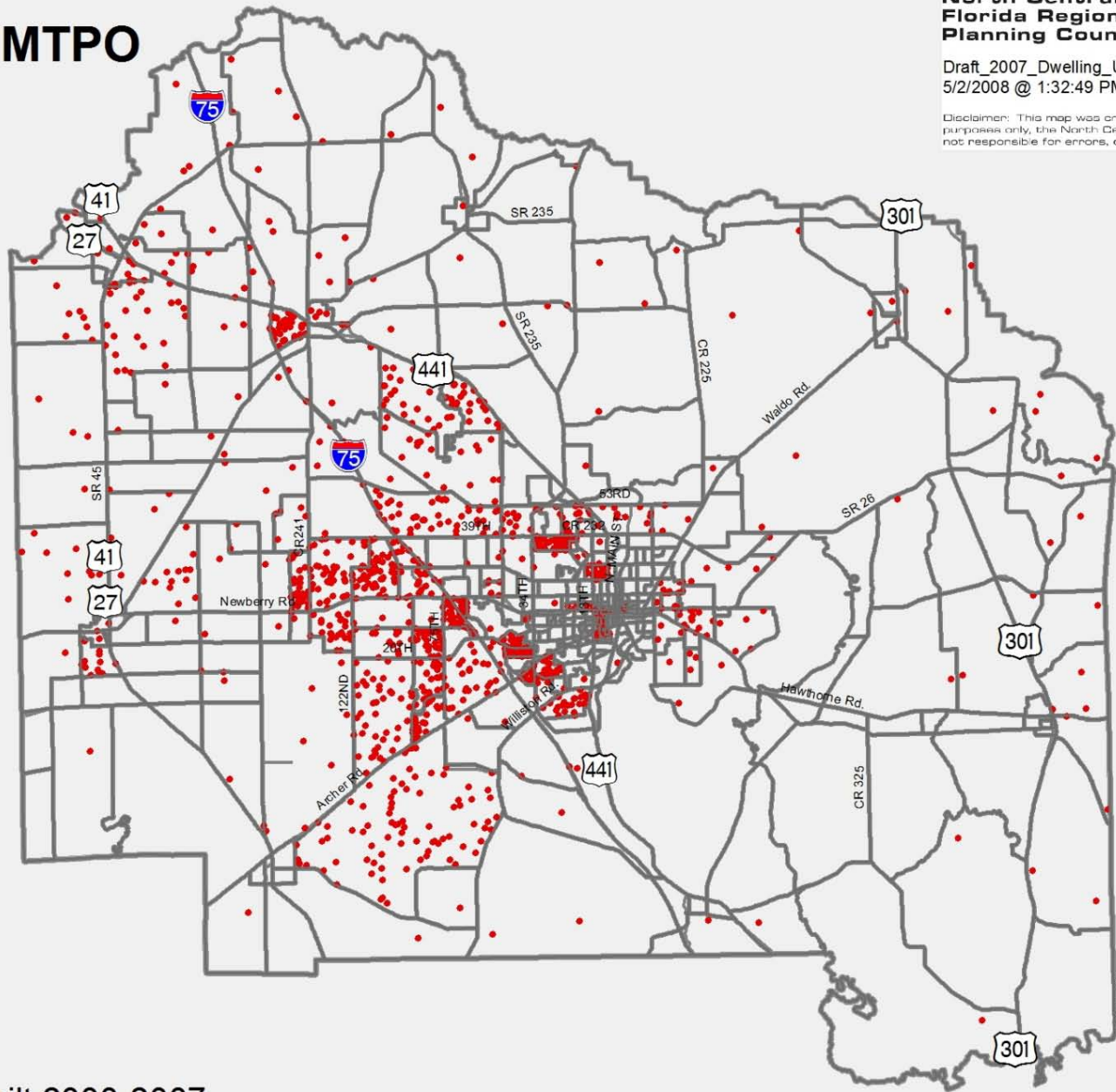
Gainesville MTPO SE Data

North Central
Florida Regional
Planning Council



Draft_2007_Dwelling_Units_Dot_Maps
5/2/2008 @ 1:32:49 PM

Disclaimer: This map was created for plan
purposes only, the North Central Florida RPC is
not responsible for errors, omissions or misuse.



Dwelling Units Built 2000-2007
1 Dot = 10 Dwelling Units



North Central Florida
Regional Planning Council



Phase 2- Future trends

- Cost of gasoline continues to increase



Phase 2- Future trends

- Oil Shortages



Topics of Discussion

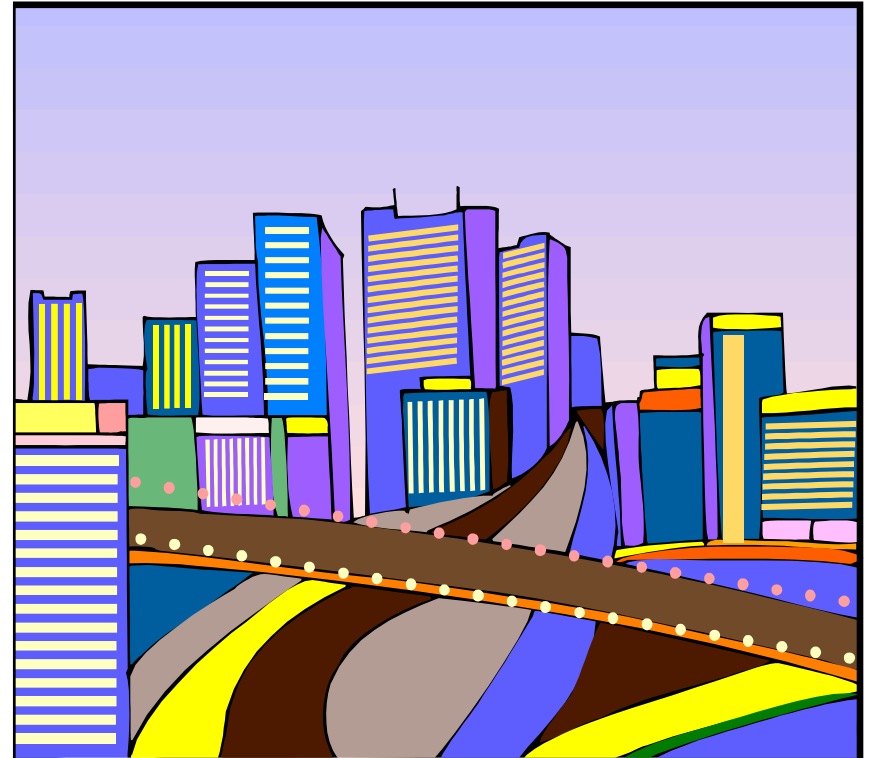
- Phase 1- How should we get started?
- Phase 2- Where are we now?
- Phase 3- Who are we/where do we want to go?
- Phase 4- What could the future look like?
- Phase 5- What impacts will scenarios have?
- Phase 6- How will we reach our desired future?

Phase 3- Conduct Visioning



Scenario planning- defined

- “stories about the future.”



We know what we don't want



Vision- Year 2035

Livable Community



Vision- Year 2035

Multimodal



Vision- Year 2035

Energy Independence



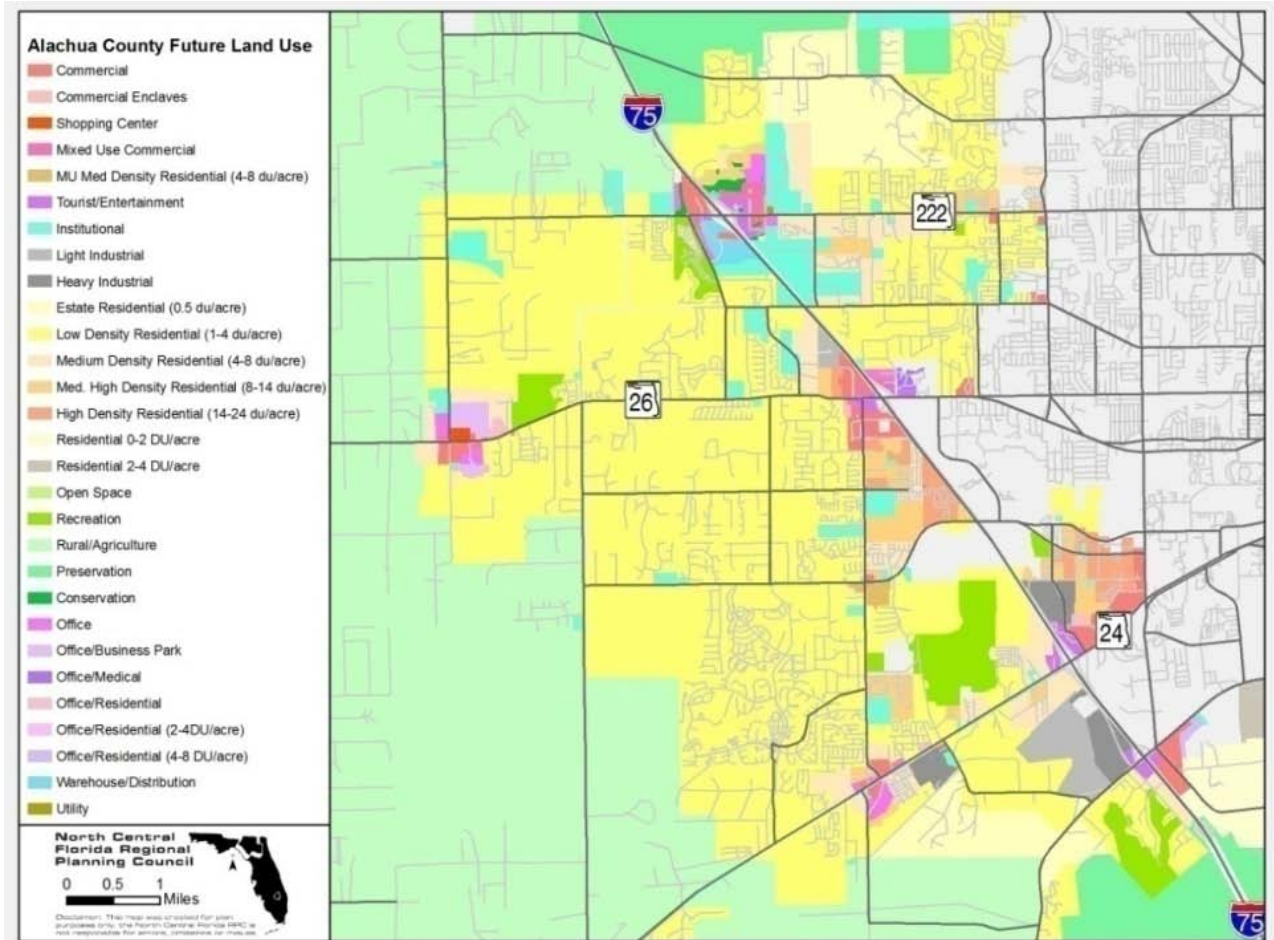
Vision- Year 2035

Climate Change



Vision- Year 2035

Balanced Growth



Topics of Discussion

- Phase 1- How should we get started?
- Phase 2- Where are we now?
- Phase 3- Who are we/where do we want to go?
- Phase 4- What could the future look like?
- Phase 5- What impacts will scenarios have?
- Phase 6- How will we reach our desired future?

Year 2035 Scenario #1 - Base Line

Continuation of
current policies,
programs and land
use trends



Year 2035

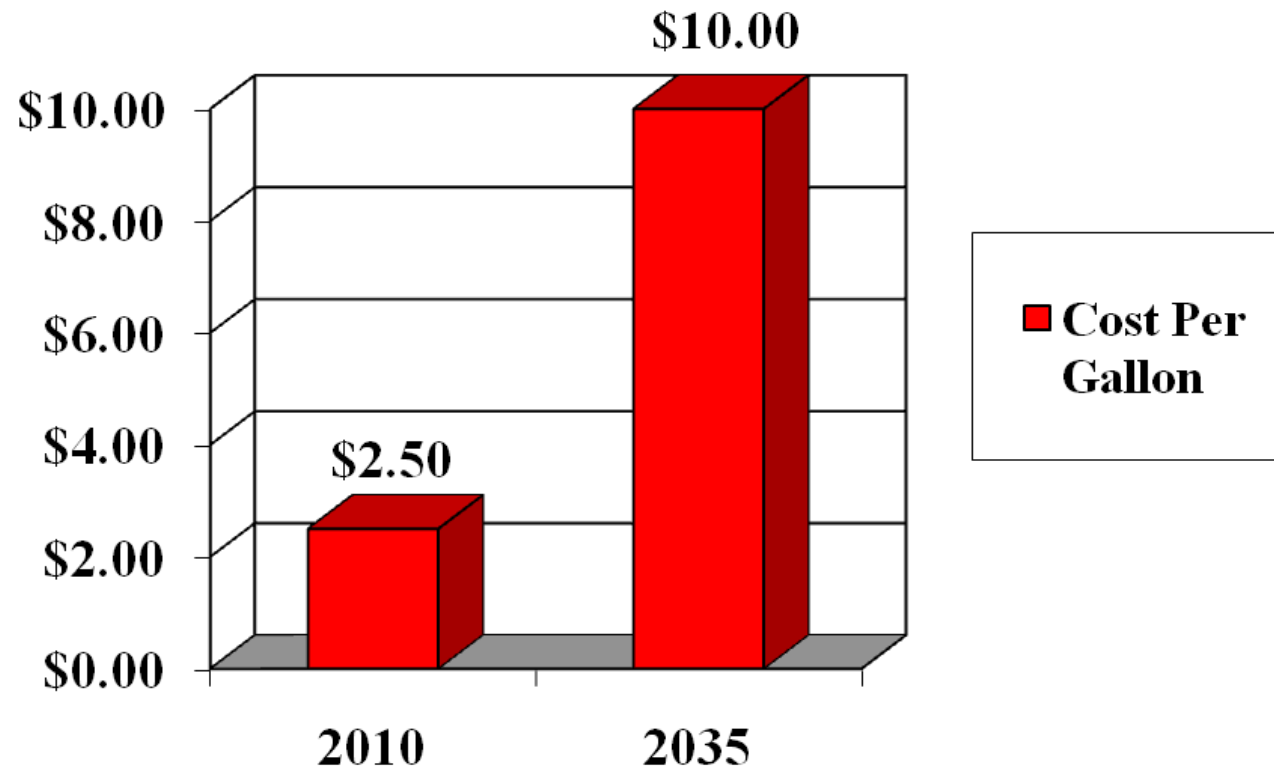
Scenario #2 -

Peak Oil



Peak Oil Scenario- Model Adjustment Factor

Revise travel costs in the
model



People will own fewer cars.



Peak Oil Scenario- Model Adjustment Factor

Adjust automobile ownership in
traffic analysis zones (TAZ)

High Accessibility TAZ	Adjustment Factor
0 auto households	10% increase
1 auto households	15% increase
2 auto households	10% decrease
3+ auto households	15% decrease

Topics of Discussion

- Phase 1- How should we get started?
- Phase 2- Where are we now?
- Phase 3- Who are we/where do we want to go?
- Phase 4- What could the future look like?
- Phase 5- What impacts will scenarios have?
- Phase 6- How will we reach our desired future?

People will live in higher density mixed use developments.



www.pedbikeimages.org / Ryan Synder

Substantial shift from autos to transit.



People will make more bicycle/pedestrian trips

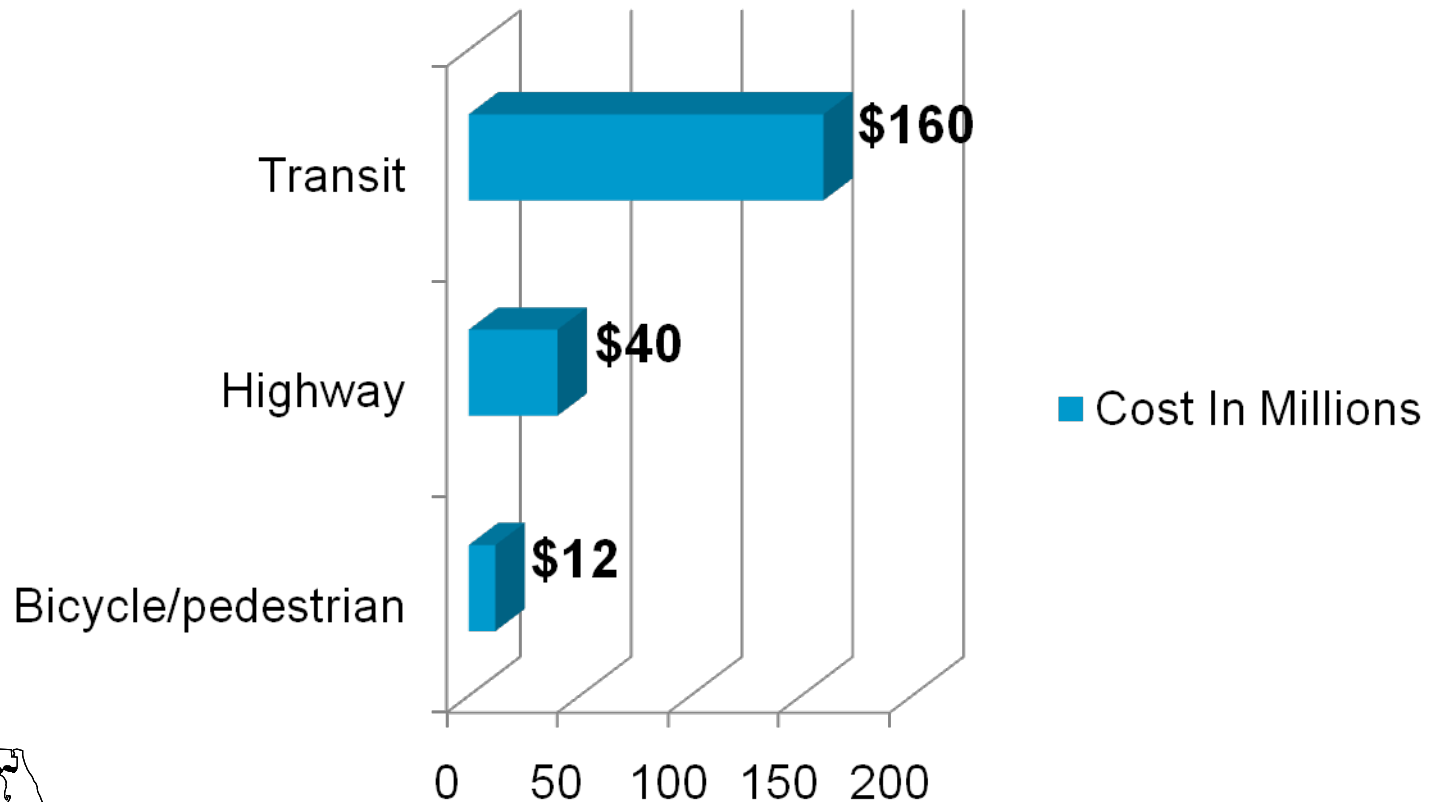


Topics of Discussion

- Phase 1- How should we get started?
- Phase 2- Where are we now?
- Phase 3- Who are we/where do we want to go?
- Phase 4- What could the future look like?
- Phase 5- What impacts will scenarios have?
- Phase 6- How will we reach our desired future?

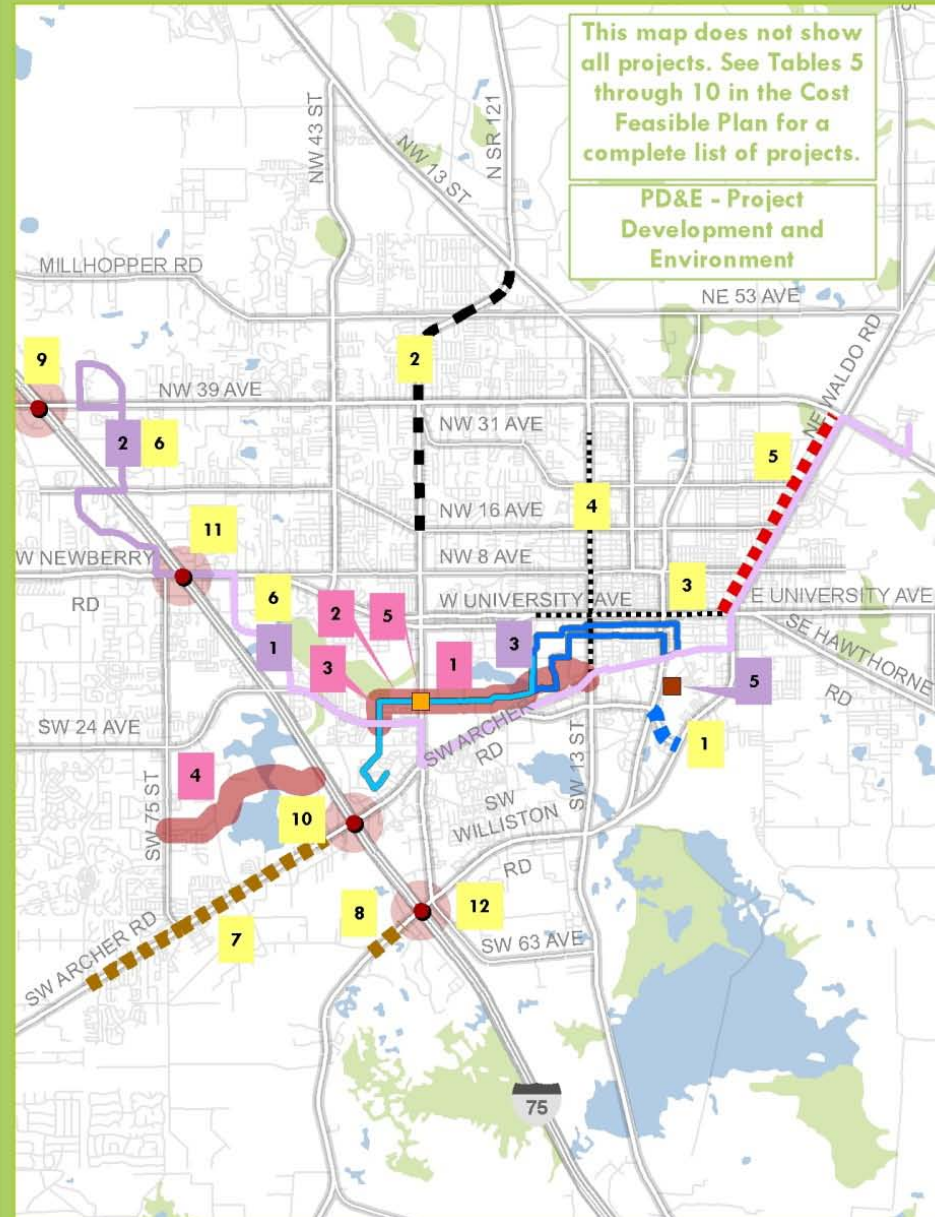
Make transportation investments in multimodal projects

Cost Feasible Plan Projects



Make transportation investments in the core of the community

YEAR 2035 COST FEASIBLE PLAN



Year 2035 Long Range Transportation Plan Update

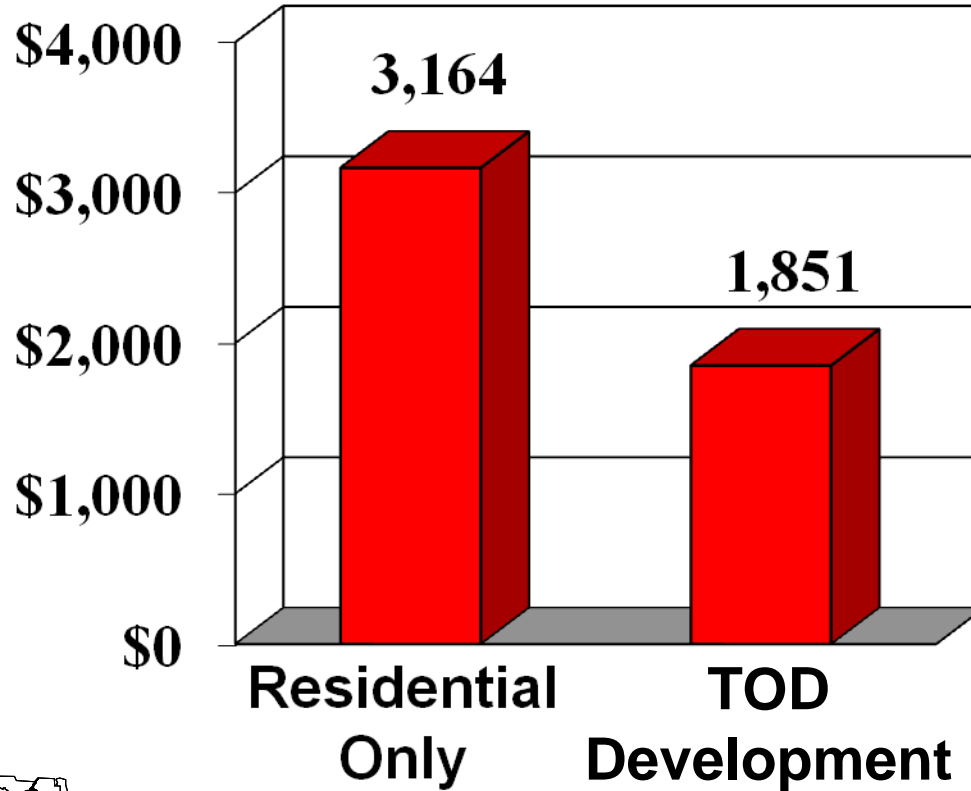
Metropolitan Transportation Planning Organization for the Gainesville Urbanized Area

Create clusters of mixed-use development connected by transit



Implement a multi-modal fee

Cost per 1,000 square feet for a single-family home



Plan Adoption Date- October 27, 2010



Lessons Learned

- Great tool to consider how transportation investments affect land use decisions.



Lessons Learned

- Considerable interest and curiosity by elected officials and other citizens.



Topics Discussed

- Phase 1- How should we get started?
- Phase 2- Where are we now?
- Phase 3- Who are we/where do we want to go?
- Phase 4- What could the future look like?
- Phase 5- What impacts will scenarios have?
- Phase 6- How will we reach our desired future?

Contact Information:

Marlie Sanderson

Gainesville, Florida MPO

(352) 955-2200

sanderson@ncfrpc.org