

# Bridging the Divide:

## Strengthening Rural-Urban Connections



HUD SCI Convening  
December 3, 2014

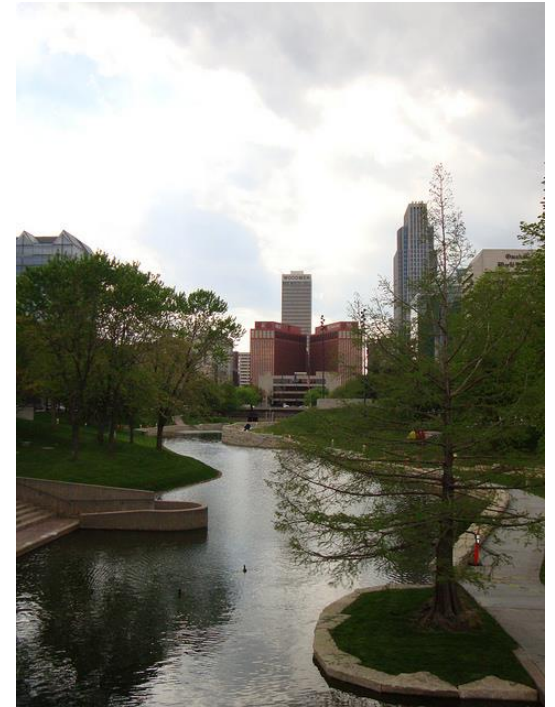
**NADO**  
NATIONAL ASSOCIATION OF DEVELOPMENT ORGANIZATIONS  
RESEARCH FOUNDATION

Sustainable Communities  
 Learning Network

# Session Overview



- Welcome / Introductions
- Background on Activities
- Grantee Stories / Questions
- Group Discussion



REGIONAL STRATEGIES. PARTNERSHIPS. SOLUTIONS.  
NADO.ORG



# Background on Activities

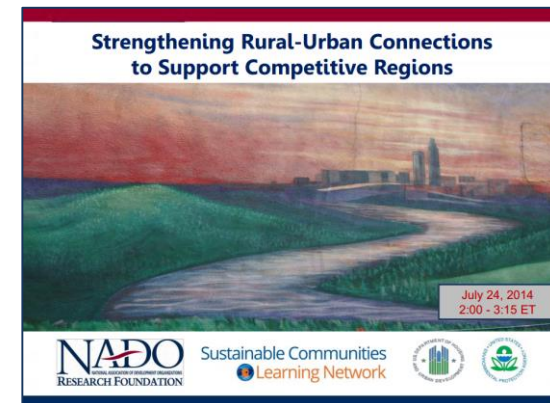
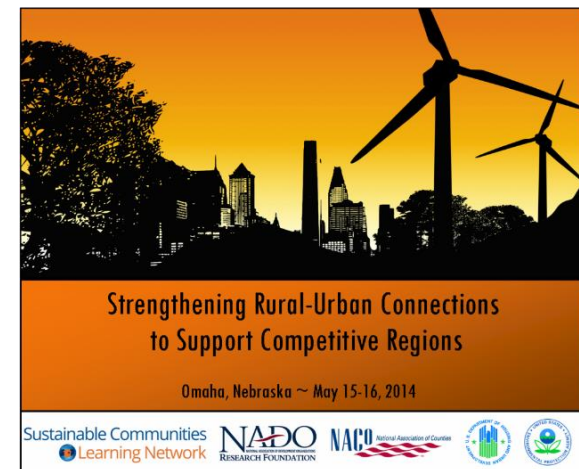
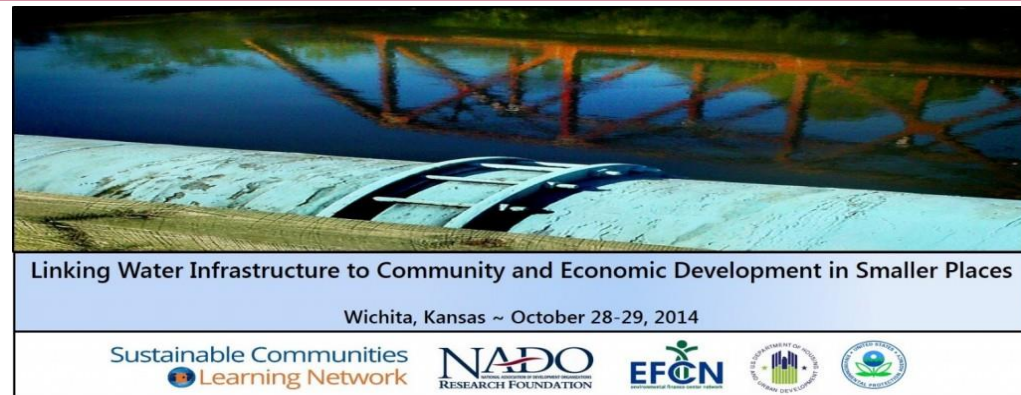
Workshop: **Strengthening Rural-Urban Connections to Support Competitive Regions (Omaha, NE)**

Workshop: **Linking Water Infrastructure to Community and Economic Development in Smaller Places (Wichita, KS)**

Webinar: **Strengthening Rural-Urban Connections to Support Competitive Regions**

Upcoming Publication: **Title TBA, Spring release**

*All materials available at [www.sclearningnetwork.org](http://www.sclearningnetwork.org)*



# Workshops



NADO





# Background on Activities



## Shared Purpose...

- If metropolitan America is to drive national prosperity, metropolitan areas will need a **healthy and sustainable rural economy and culture**
- If rural America is to flourish, it will depend upon **vibrant, well-functioning cities and suburbs**



Slides courtesy of Brian Dabson, University of Missouri



REGIONAL STRATEGIES. PARTNERSHIPS. SOLUTIONS.  
NADO.ORG

# Grantee Stories



## **Kerrie Diers**

Executive Director, Nashua Regional  
Planning Commission (New Hampshire)  
*Granite State Future*



## **Paula Downs**

Project Manager, Regional Economic Area  
Prosperity Plan (Wichita, KS)  
*South Central Kansas Prosperity Plan*



REGIONAL STRATEGIES. PARTNERSHIPS. SOLUTIONS.  
NADO.ORG

# Group Discussions



- In what ways has your planning process changed the conversation about rural-urban linkages in your region? Which issue areas in particular have been best addressed?
- What key partnerships have you developed to strengthen rural-urban linkages? Who have been the key players?
- What barriers exist in your region to overcoming rural-urban divisions? Have you been able to respond to these barriers?



REGIONAL STRATEGIES. PARTNERSHIPS. SOLUTIONS.  
NADO.ORG

# NADO

NATIONAL ASSOCIATION OF DEVELOPMENT ORGANIZATIONS

**Brett Schwartz**

**Program Manager  
NADO Research Foundation**

**[bschwartz@nado.org](mailto:bschwartz@nado.org)**

**NADO**  
NATIONAL ASSOCIATION OF DEVELOPMENT ORGANIZATIONS  
**RESEARCH FOUNDATION**