



CHITTENDEN COUNTY RPC

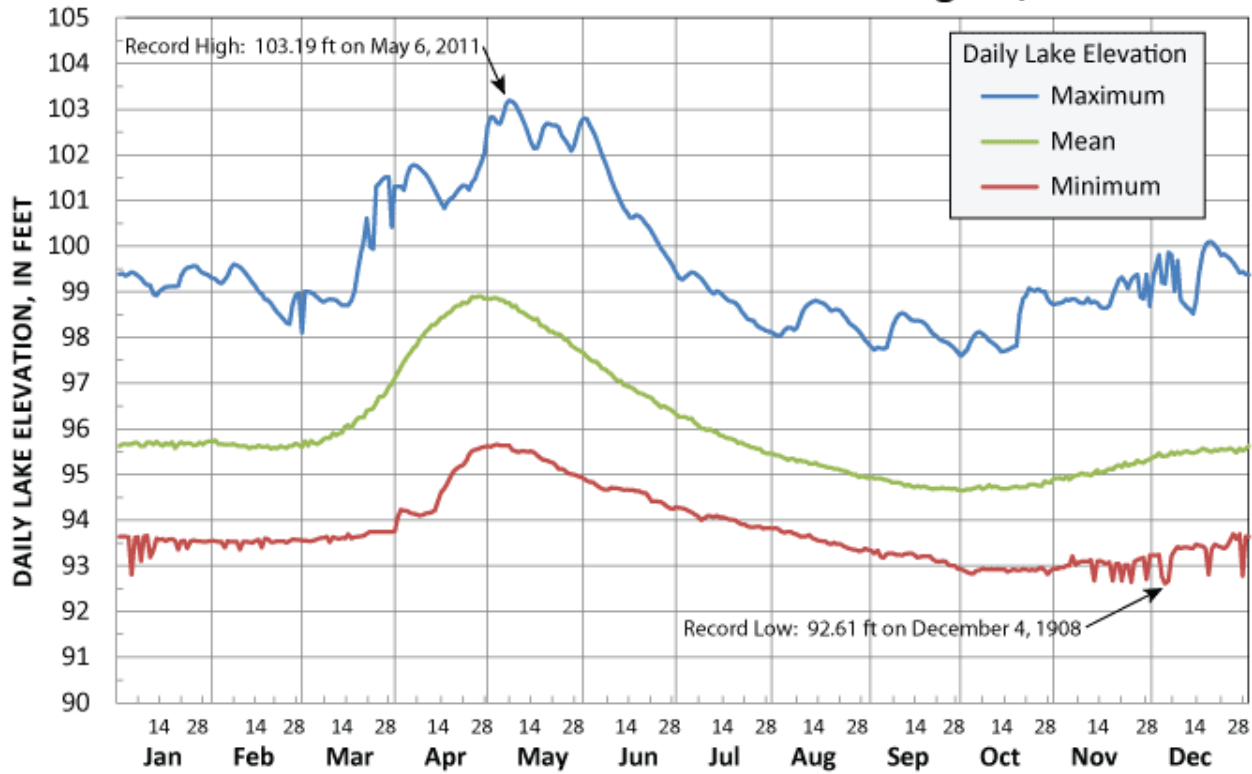
Communities Planning Together



**Building regional resiliency in
northwest Vermont: integrating
transportation and land use planning**

**Dan Albrecht, MA, MS, Senior Planner
Chittenden County Regional Planning Commission
Winooski, Vermont**

105 Years of Lake Elevation Data at Burlington, Vermont



USGS 04294500 LAKE CHAMPLAIN AT BURLINGTON, VT
FOR WATER YEARS 1907 - 2011



Integrating resilience in regional and local planning

- All-Hazards Mitigation Plan
- County Comprehensive Plan

Municipal plans and bylaws are key in New England

- Fluvial Erosion Hazard maps & language
- Flood resiliency chapter
- River Corridor maps & language

DRAFT Risk Analysis and Hazard Mitigation Prioritization Tool

Legend

Various Projects and Plans

Potential Projects

Misc. Plans or Projects



Misc. Plans or Projects



Westford Transportation Improvements

Structural Improvement



Culvert Replacement



Add Gravel To Surface



Pavement



Suggested Guard Rail Location



Projects from River Corridor Plan

High - Active Project Type



Moderate - Active Project Type



Low - Active Project Type



High - Passive Project Type



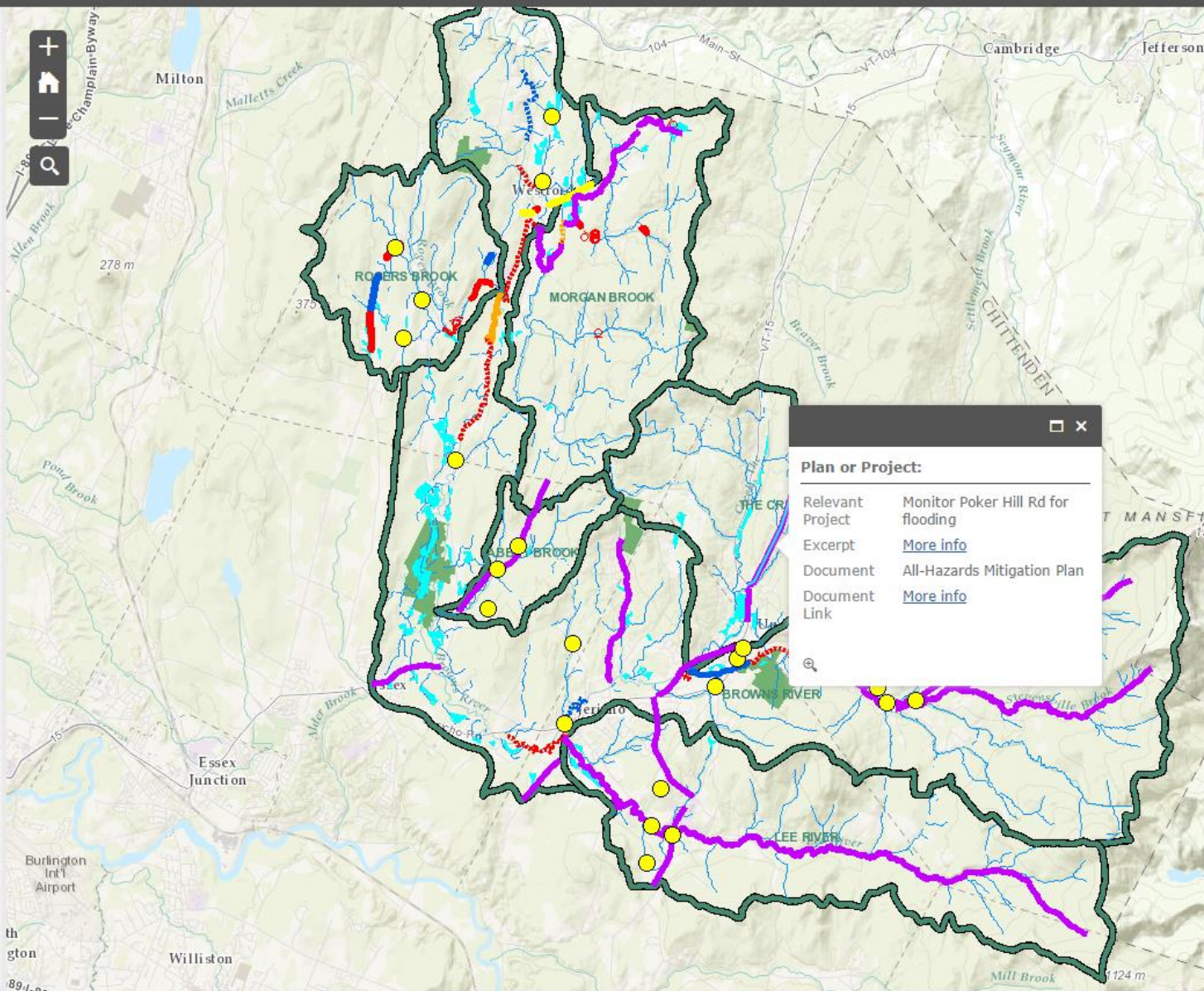
Moderate - Passive Project Type



Low - Passive Project Type



Potential Wetland Restoration Site 2008 data



Federal support

- Federal grants have helped all eleven Vermont regional planning commissions (on a periodic basis) assist municipalities with hazard mitigation planning and river erosion studies (**e.g. FEMA Pre-Disaster Mitigation Grants**)
- Even if small, states and counties need **sustained annual funds from FEMA and DOT-FHWA** to support resiliency and hazard mitigation planning and programming
- **FEMA HEADQUARTERS:** Allow municipalities and organizations to charge indirect costs. These are not the same as management costs!!!
- Integrate **Resiliency** planning with **Land Use** and **Hazard Mitigation** planning

Continued Integration of state-county-town resiliency planning

- RPC staff now work in State Emergency Operations Center and contact towns during all severe weather events
- Better coordination and data sharing between towns, RPCs, state DOT, state Natural Resources, etc.

