

NADO ANNUAL TRAINING CONFERENCE

Denver, Colorado

August 24, 2014



CEDS & Resiliency

Kevin Belanger, CEO

South Central Planning &
Development Commission

Houma, Louisiana



Definitions of Resiliency

- “The ability to recover from or adjust easily to misfortune or change” by (Merriam-Webster’s Dictionary)
- “The ability to recover after man made, natural, or economic disasters through cohesive coordination.” (SCP&DC CEDS Team)



So what challenges have tested our resiliency??

- **Aug 2005 - Hurricane Katrina**

1,833 Deaths

\$108 Billion Dollars in damages

The worst civil engineering disaster in the U.S.

- **Sept 2005 - Hurricane Rita**

120 Deaths in four States

12 Billion Dollars in damages

- **Dec 2007 – Subprime Mortgage Crisis**

Triggered 9 million jobs lost (6% of all jobs)

940 Billion in banking losses

Home building dropped by 45%

- **Aug 2008 - Hurricane Gustav**

153 Deaths

4.3 Billion Dollars in damages



Challenges Continued.....

- **Sept 2008 - Hurricane Ike**
195 Deaths
29.5 Billion Dollars in damages
- **November 2008 - FEMA Elevations:**
Impact homes within all flood zones
Still ongoing
- **December 2008 - Decertification of Federal Levees:**
Increases insurance rates
Rescinds Federal assistance
- **Apr 2010 - BP Oil Spill**
11 Deaths
210 million gallons spilled vs. 11 million Exxon Valdez
62,000 gallons/day



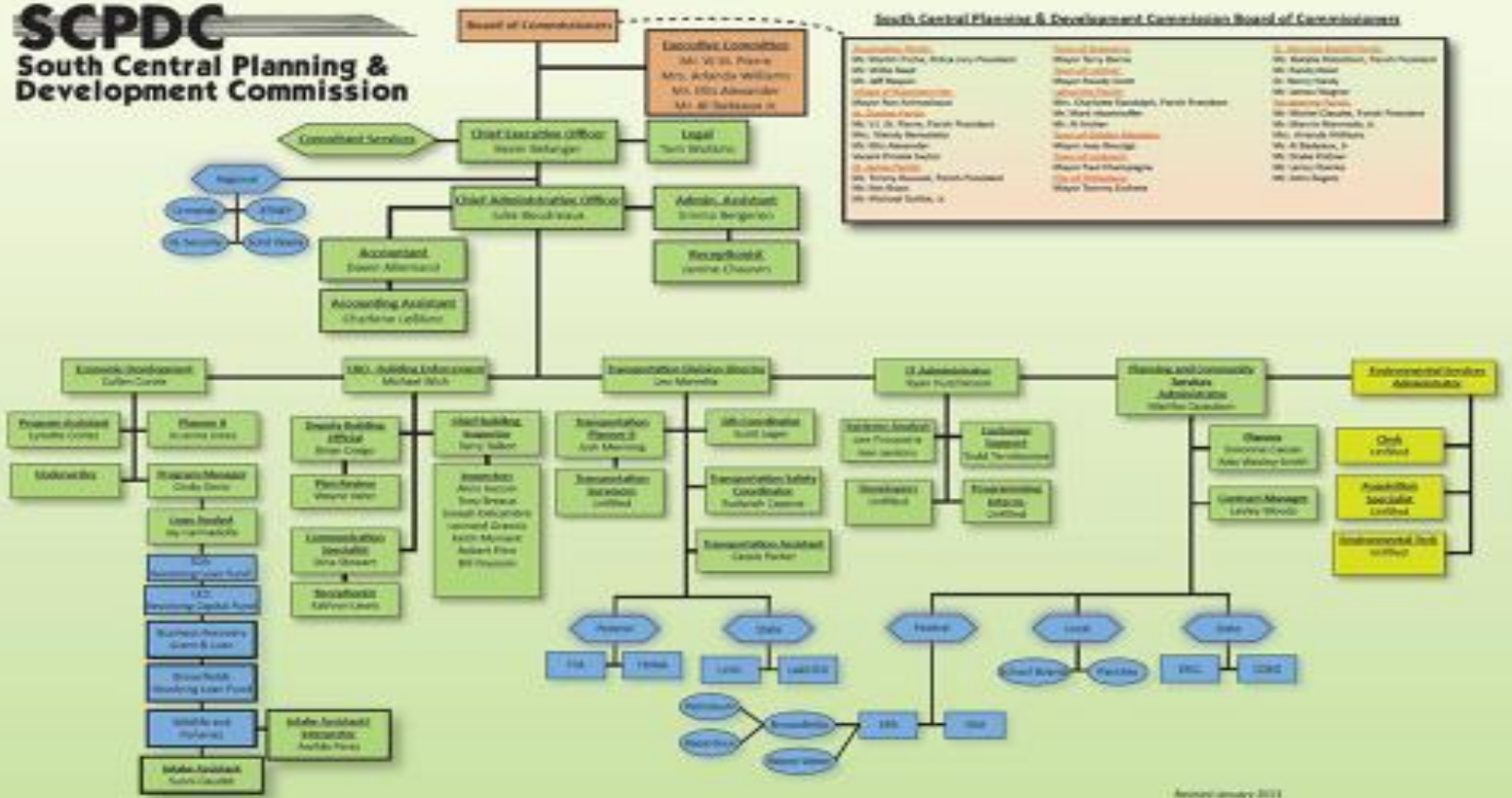
Challenges Continued.....

- **May 2010 Gulf of Mexico Drilling Moratorium**
6 months
58,000 direct Louisiana industry workers
260,000 other oil services related jobs (17% of all jobs in Louisiana)
- **Aug 2012 - Hurricane Isaac**
24 Deaths
2.39 Billion Dollars in damages
- **Oct 2012 - Biggert/Water Act**
Eliminates subsidies
Increased cost of 25%/ yr.
Eliminated grandfathering



2014 Organizational Chart

SCPDC
South Central Planning & Development Commission



Approved January 2014

Integrate the 3-C Planning Process

- **Continuing:** To develop an ongoing relationship with stake holders of commission members, state & federal partners, public and non profit organizations, and citizens to discuss challenges and opportunities.
- **Cooperative:** To meet and listen and to allow stakeholders an opportunity to share ideas openly.
- **Comprehensive:** To address each challenge openly and to consider all elements or aspects.



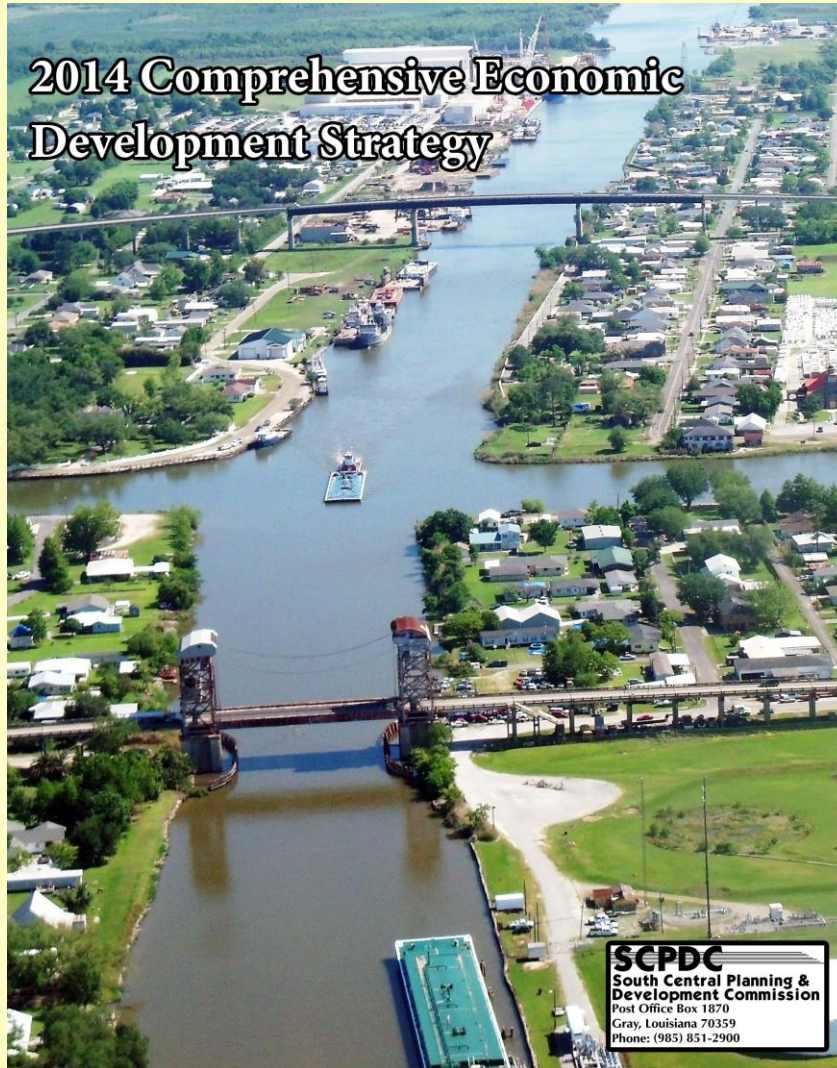
CEDS Development Process

- **Needs Analysis** (define what the needs are and list goals and objectives)
- **Development of Strategy** (Analyze needs and develop strategies to achieve goals and objectives)
- **Strategy Implementation** (allocation of resources and responsibilities to achieve the strategy)



So what have we witnessed with the CEDS process???

2014 Comprehensive Economic Development Strategy



SCPDC
South Central Planning &
Development Commission
Post Office Box 1870
Gray, Louisiana 70359
Phone: (985) 851-2900



- Extremely good collaboration and coordination between political leadership throughout the region.
- Willingness of private business to participate in public discussions on local and regional matters.
- Jurisdictions are sharing processes and costs



Major Regional Results

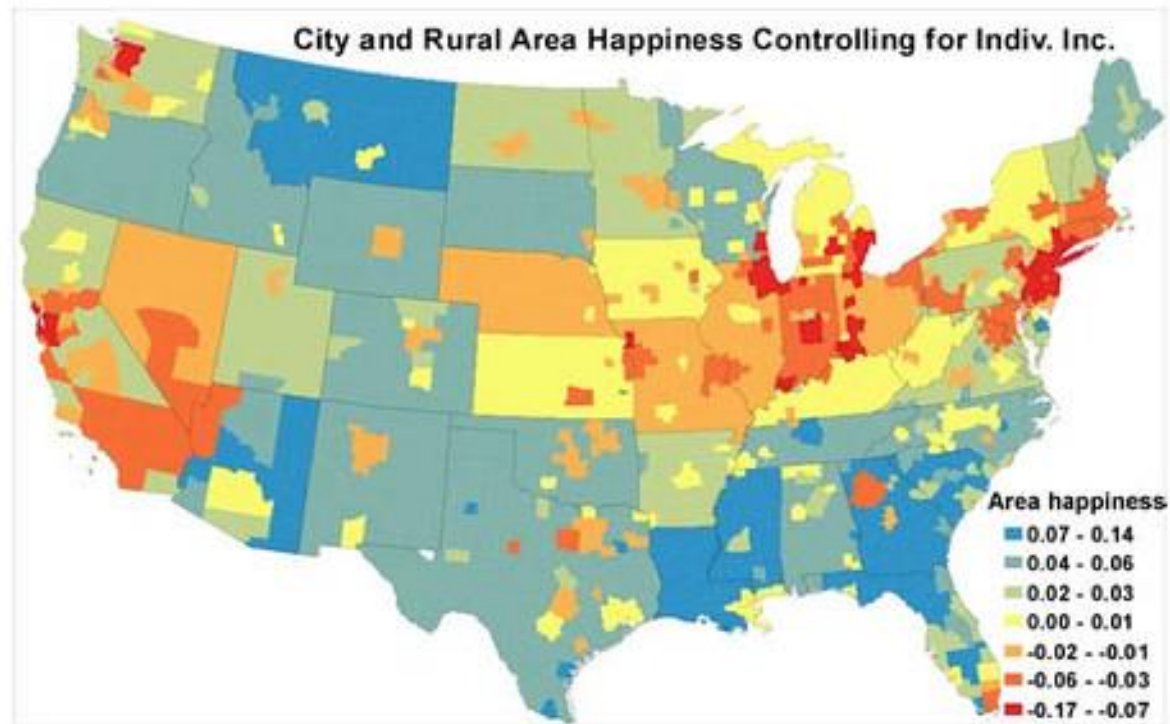
- 1998 Regional Mutual Task Force:
30 Million Dollars of purchased assets
Replicated throughout all Louisiana in 2002
- 2001 MPO designation and Regional expansion
- 2006 Expanded Lending Service 16 million
- 2007 Regional Building Code Enforcement
- 2008 State-wide Fisheries Recovery Programs
- 2013 Regional Environmental Planning
- 2014 Super Region Evaluation (Lafayette)
- 2014 20,000 Sq. Ft. building expansion
- 2015 IT Ramp UP across United States
- 2015 Environmental (Air/ Water/ Permitting)
- 2016 Municipal Procurement



The Five Happiest Cities in America All Have One Thing in Common

Using data from a CDC survey called the Behavioral Risk Factor Surveillance System, among other sources, and adjusted for age, sex, race, income and other factors, New Yorkers are the among the unhappiest people in the country. The five happiest, based off demographics and income, are **Lafayette, Houma, Shreveport-Bossier City, Baton Rouge and Alexandria**, all in the great state of Louisiana. (Tom McKay July 2014)

Figure 3: Estimated Metropolitan and Rural Area Adjusted Happiness



Source: This figure shows each metropolitan and rural area's adjusted life satisfaction, after controlling for demographic covariates and individual income in a mixed effects model. Data are from CDC (2005-2009).

Thank You

South Central Planning & Development Commission

5058 West Main Street

Houma, Louisiana 70360

(985)851-2900

kevin@scpdc.org

SCPDC.org

