



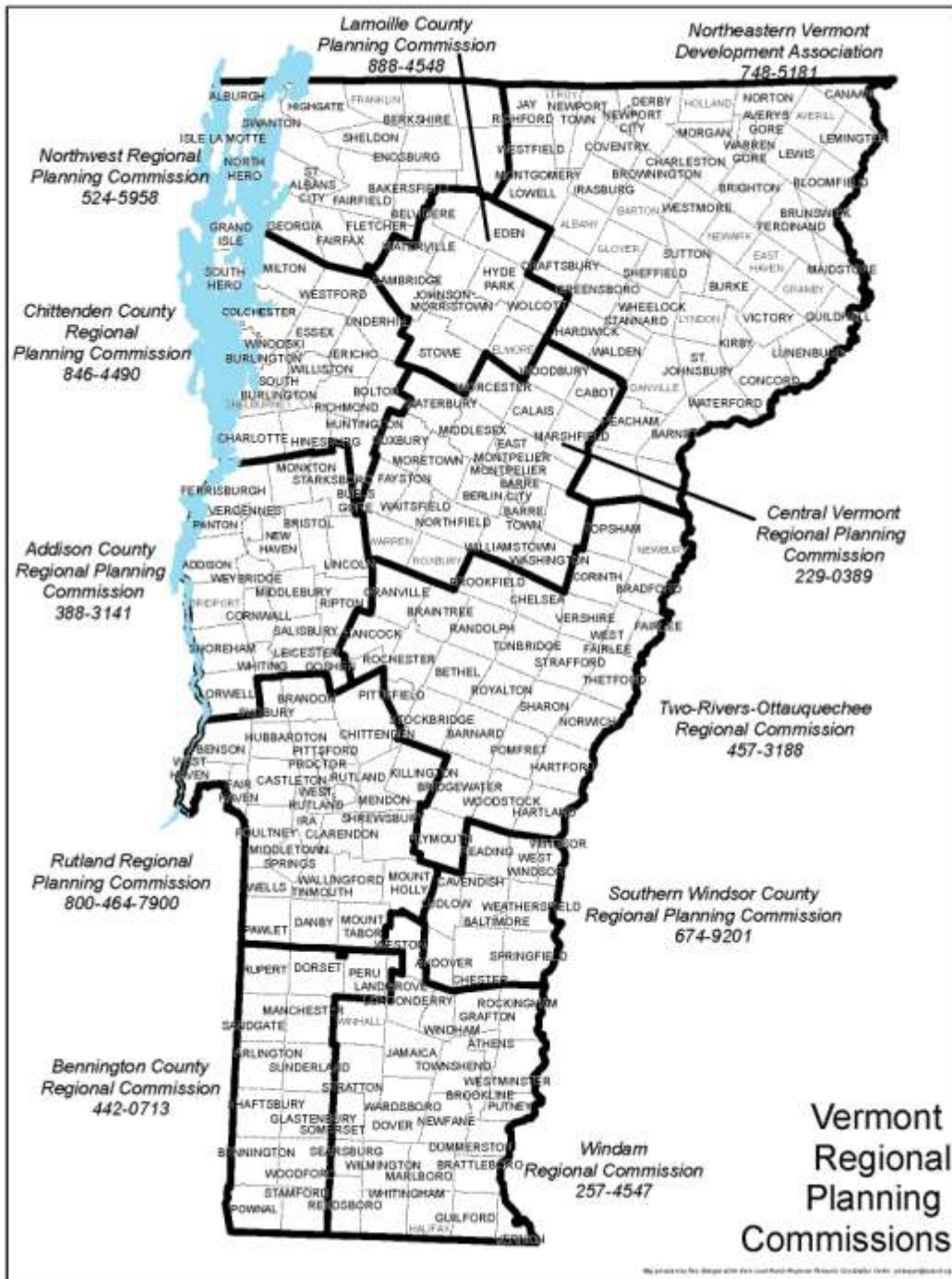
RPC Involvement in the Recovery after Tropical Storm Irene

NADO Conference
October 2012

Presented by Tom Kennedy (Southern Windsor County RPC) and Susan Schreibman (Rutland RPC) on behalf of the Vermont Association of Planning and Development Agencies

Agenda

- Regional Planning in Vermont
- What Happened in Vermont?
- Role of RPC in Disaster Response
- One Year Later
- Lessons Learned



Roles of Vermont's RPCs

- Transportation Planning
- Local Land Use Planning & Zoning
- Emergency Planning & Preparedness
- Natural Resource Planning
- GIS Mapping & Analysis

What Happened in Vermont?

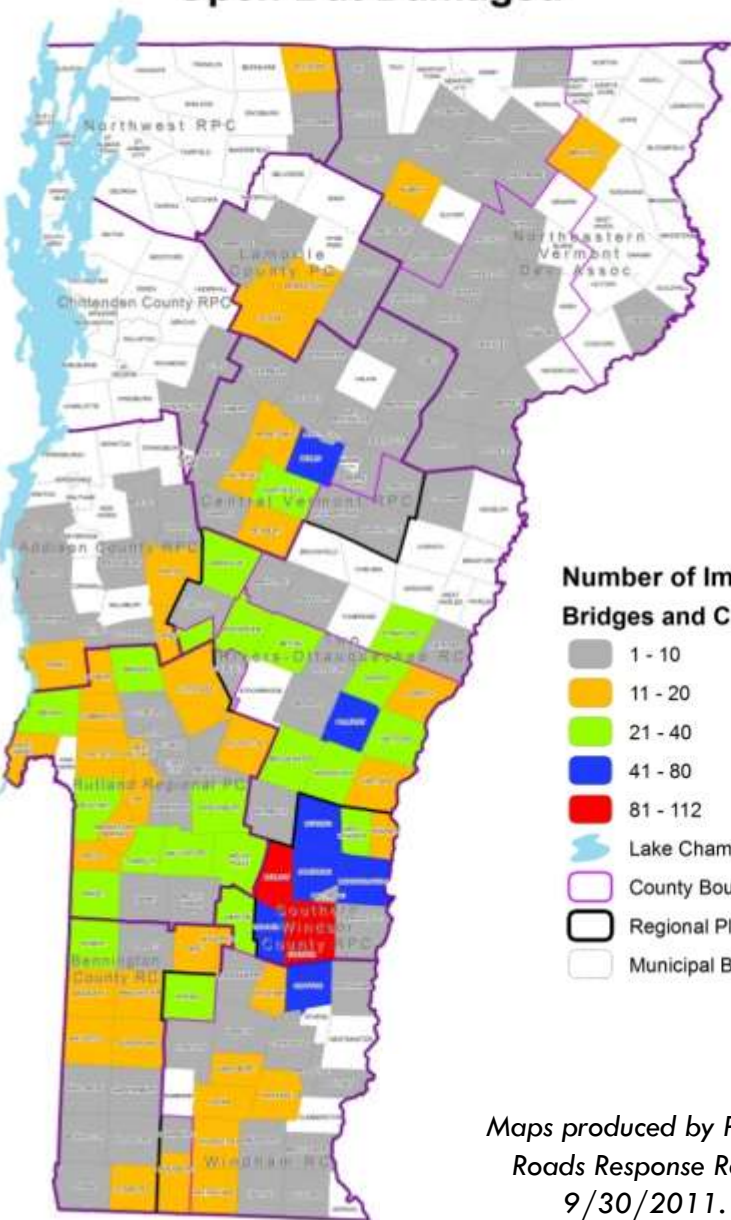
August 28, 2011



Damage across Vermont

Road Segments, Bridges, Culverts
Open But Damaged

Road Segments, Bridges, Culverts
Closed or Emergency Vehicle Only



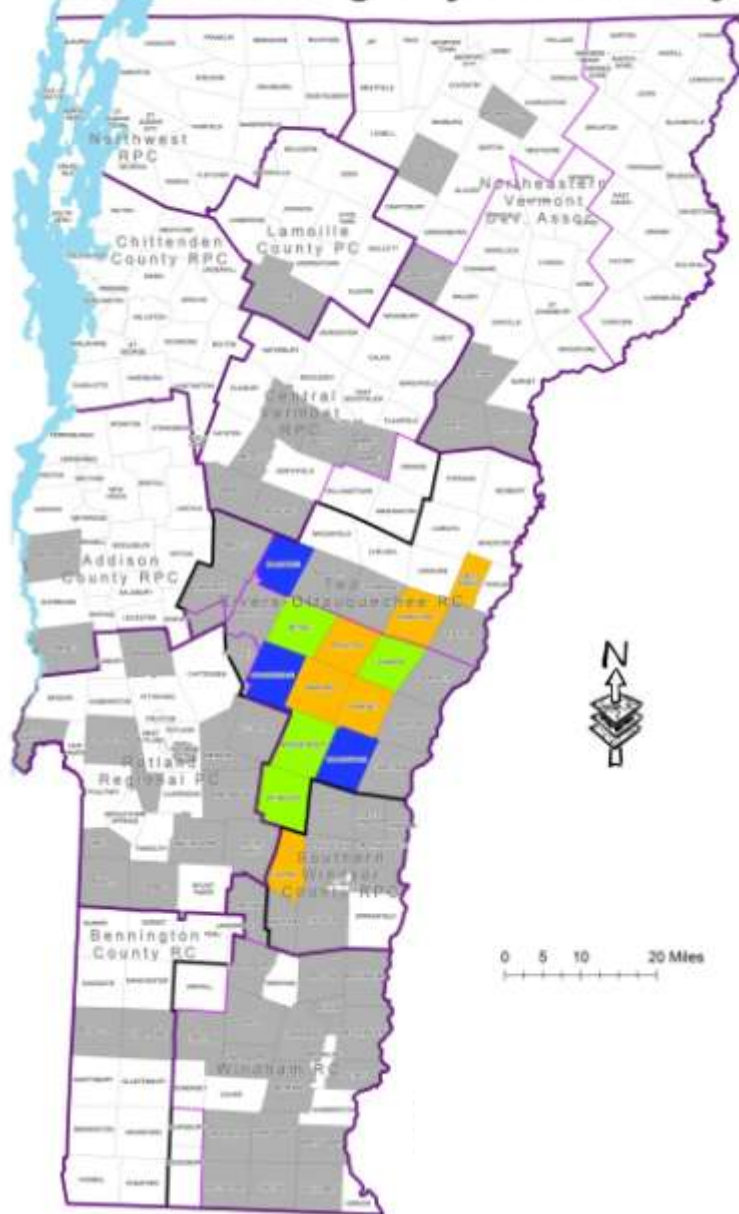
Legend

Number of Impacted Road Segments, Bridges and Culverts

- 1 - 10
- 11 - 20
- 21 - 40
- 41 - 80
- 81 - 112

NOTE:
Data derived from Regional Status Reports.

- Lake Champlain
- County Boundary
- Regional Planning Commission Boundary
- Municipal Boundary



Maps produced by Pam Brangan at the Irene Local
Roads Response Resource Coordination Center.
9/30/2011. pbrangan@ccrvcvt.org

The RPCs' Tasks

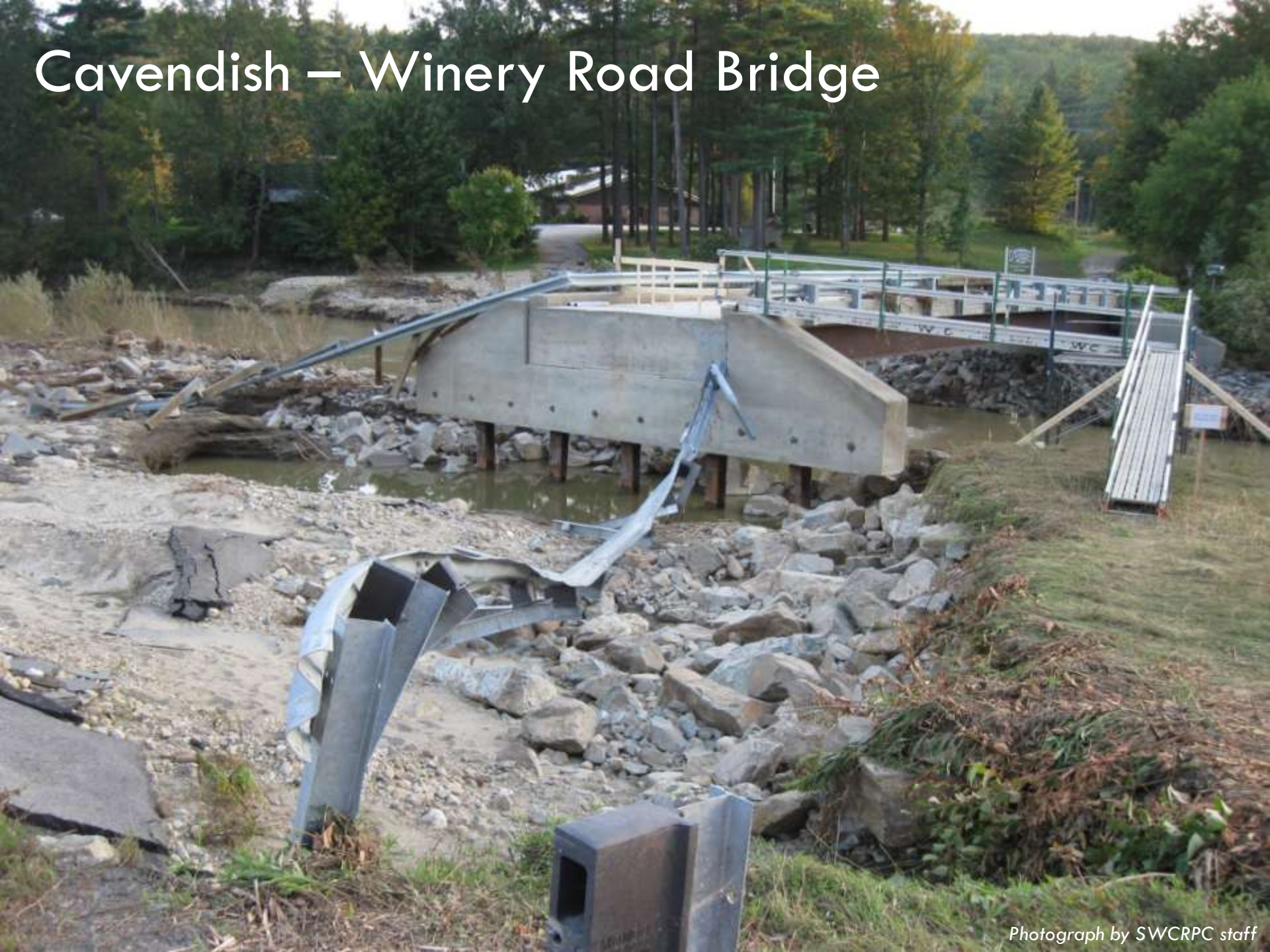


Role of RPCs in Response

- Tasks
 - ▣ Mapping & Data Collection
 - ▣ Municipal Needs
 - ▣ Communications
 - ▣ Technical assistance
 - FEMA PA Assistance
 - State Assistance



Cavendish – Winery Road Bridge



“Cavendish Canyon” on VT-131



One Year Later



Photo by N. Nutile-McMenemy

Lessons Learned



State's Response to Irene

- Limit municipal FEMA match to approx. 5%
- Increased State funding for Town Highway Program
- Fund the 25% non-federal match for Hazard Mitigation Home-Buyout Program*
- Applied for \$5 million dollars in EDA funds to enhance Statewide RLF
- Established Small Business Teams for business assistance
- Established Farm Relief Fund for feed, land repair, equipment replacement

Community Development Block Grant

Approximately \$21 million awarded

\$ 3 million Economic Development

\$ 6 million Housing

\$ 6 million HMGP (Home-Buyouts)

\$ 2 million Infrastructure

\$ 3 million Planning, Tourism, Downtowns

\$ 1 million Administration

Status of Repairs

- Out of 3,541 of town roads, bridges & culverts that sustained some level of damage or were closed by Irene
 - ▣ 99% have been re-opened
 - ▣ One year later only 30 bridges and road segments are still not repaired

Strengths

- Pre-established relationships with Municipalities
 - Transportation
 - GIS mapping and infrastructure inventories
- Pre-established Relationships and Partnerships with State Agencies and Volunteers
- Inter-RPC Mutual Aid Assistance – less impacted RPCs help more impacted RPCs

Areas for Improvements

- No pre-defined role for RPCs to assist VTrans in the manner requested
- Not all RPC staff had adequate knowledge and/or training for tasks
- Communications challenges
- Continuously changing expectations
- Collecting too much information

Recommendations

From the November 2011 After Action Report

- Plan to include RPCs in emergency response
- Create funding provision for approved emergency activations
- Train RPC staff
- Facilitate clear, concise and coordinated communications
 - List of FAQs ahead of time
 - Central website/ clearinghouse
 - Distill and prioritize information needs for local officials



Picture from Town of Weathersfield facebook page

Questions?