

A Publication of the National Association of Development Organizations (NADO) Research Foundation

Committed to Innovation



Aliceann Wolhbruck
Executive Director



John Bruner
President

Innovation in the public sector requires dedicated individuals willing to take time and effort needed to make changes and improve programs. As Abraham Lincoln said, “Commitment is what transforms a promise into reality.” The programs and projects highlighted in this issue of the *Digest*, illustrate the successful commitment of NADO members to improving their communities and the lives of individual citizens.

INSIDE

Vol. 13, No. 11

September 2002

Aging & Human Services	2-3
Business & Entrepreneurship	4-6
Community, Economic & Social Development	6-7
Emergency Response & Mitigation	8
Environment	9-11
Housing	12
Local Government Assistance	13-14
Technology	15-16
Tourism	17
Transportation	18-20
Workforce Development	21
Youth	22
State Index	23
Calendar	24

The projects described illustrate the broad array of services and programs provided by NADO member organizations. They exemplify the benefits of regional partnerships in both cost saving and improved service delivery. Many of the projects are using technology to improve economic, community and human development in small towns and rural counties across the country.

The summaries provide an overview of the myriad needs in small metropolitan and rural America – homebuyer education, stormwater runoff, microenterprise lending, Geographic Information Systems; brownfields redevelopment, E-Commerce for small business, computer training for youth and elderly, transportation planning that is sensitive to the environment and dozens of other topics.

Many of these projects were identified as part of a comprehensive economic development planning process and have taken years to accomplish. They illustrate the need for long-term commitment from local policy boards and technical expertise by regional development professionals. Innovation requires both policymakers and staff to consider investments that will pay dividends to communities in jobs, incomes and the quality of life.

Many individuals responsible for these programs will participate in the Innovations Award Roundtables at the 35th NADO Annual Training Conference, October 1, 2002 in Reno, Nevada. Since 1986 NADO has recognized innovative projects and enabled thousands of elected officials and development professionals to share ideas and advice about their specific projects. Information about previous year’s projects is available at www.nado.org/nadorf.

Congratulations to all 2002 Innovation Award winners. Special thanks to NADO Research Foundation Research Manager Kelly Novak who administered the awards process and prepared the project summaries. ●

The *Economic Development Digest* is published ten times a year by the NADO Research Foundation.

Publisher

Aliceann Wohlbruck

Editor

Zanetta Doyle

Managing Editor

Laurie Thompson

Contributor

Kelly Novak

**NADO Research Foundation
Board of Directors**

President

John L. Bruner, London, KY

First Vice President

Joe Brannan, Bisbee, AZ

Second Vice President

Gary Gorshing, Burns Flat, OK

Secretary

Jack Scriber, Louisville, KY

Treasurer

Ken Jones, McAllen, TX

Immediate Past President

William Hess, Painted Post, NY

The National Association of Development Organizations (NADO) is a public interest group founded in 1967 to promote economic development in small metropolitan and rural regions. The association is the leading advocate for a regional approach to rural, economic and community development. The NADO Research Foundation, founded in 1988, helps bridge the communications gap among different levels of government, educational, nonprofit and private sector organizations.

Information in this publication is prepared under a cooperative agreement with the US Department of Commerce, Economic Development Administration. (EDA Award 99-06-07468.01). Additional funding is provided by the US Forest Service. Opinions in the *Digest* do not necessarily reflect official policy of these funders. ISSN 1060-5339.

For more information contact the NADO Research Foundation:

Phone: 202/624-7806

Fax: 202/624-8813

Email: info@nado.org

Internet: www.nado.org

Printed on recycled paper with soy inks.

Aging and Human Services

These citizen-centered programs and projects offer the elderly education and assistance, promote community wellness and provide caregiver support. The results have been cost savings for individuals and communities and improved quality of life.

Seniors in the **South Plains Association of Governments** region in Texas are learning the advantages of going online at the association's **Centers for Medicare and Medicaid: Back-to-School Project**. The regional organization, through school district partnerships, uses high school computer labs to teach seniors about the basics of operating a computer and how to access online Medicare/Medicaid programs, Social Security and private healthcare resources. The project is now working to acquire computers for senior centers.

Lower Rio Grande Valley Development Council in Texas formed the **Medication Assistance for the Elderly** program to assist low-income elderly with cutting medication costs. Six years ago the council purchased software for \$250, which lists pharmaceutical companies offering payment vouchers. Seniors complete and mail software forms to manufacturers and in return receive a manufacturer's voucher for prescription payments. Vouchers often cover payments for up to a year. The estimated annual cost savings is \$30,000.

Northwest Piedmont Council of Governments in North Carolina and S.A.F.E./Guarding Against the Fleecing of the Elderly, Inc. designed the **Help Us "Lookout" for Medicare! A Public Forum** to teach

individuals, without cost, about the Medicare/Medicaid billing processes. Forum attendees learned how to read medical billing statements to detect error and fraud. In-kind presentations



South Plains COG Medicare Computer Training Program in Texas.

from hospitals, insurance companies, physicians and the council's Area Agency on Aging staff trained 85 attendees. The project budget was \$810.

The **Family Caregiver Voucher Program** provides families with relief from their 24-hour caregiving duties. The **Northwest Piedmont Council of Governments** in North Carolina, partnered with lead agencies in four counties to identify caregivers for program enrollment. Enrolled caregivers receive payment vouchers for purchasing in-home care, night or weekend respite or adult day-care services. Caregivers receive up to \$1,000 in vouchers annually. The council has enrolled 77 caregivers since the program began in January 2002.

A Grayson County Community Alliance created the **Grayson County Food Bank** in Kentucky, to make food distributions and also to provide nutrition education, financial counseling and parenting workshops. The food/commodities and financial resources for this interagency, community partnership come from U.S. Department of Agriculture commodities program, Food Bank, local donations, volunteers and **Lincoln Trail Community Service**

Program. The food bank monthly distributes 15,000 pounds of food and personal items to 425 families.

MedAssist is a program administered by the **South Central Alabama Development Commission Area Agency on Aging** aimed at providing low-income individuals, over age 60, access to free and/or low cost life-sustaining medications. This 15-month program serves three counties and has, in six months, served more than 425 clients with 2,370 prescriptions and resulted in a savings of over \$512,000 for the region's low-income elderly.

East Alabama Regional Planning and Development Commission, the Alabama Department of Senior Services and the Alabama Association of Regional Councils partnered to form the **Alabama Association of Area Agencies on Aging**. The association provides Alabama's 13 Area Agencies on Aging (AAAs) with a professional organization, aiding further development and expansion of their "Senior Promise" mission. The mission is to "address the needs, independence, dignity and quality of life among Alabama's senior citizens."

THE ADVOCATE, developed by the **Lee-Russell Council of Governments' Area Agency on Aging (AAA)** in Alabama and advisory committee feedback, is Alabama's first quarterly AAA senior newsletter. The newsletter is distributed to and posted in senior care living facilities in the region. The newsletter's circulation has generated an increase of information requests to the AAA. Support for printing and distribution comes from the area agency's in-kind staffing services.

Lee-Russell Council of Governments' AAA's project entitled **The Life History Video** is a compilation of the biographical interviews with senior citizens over the age of 90. The personal interviews, conducted by case managers, discuss the knowledge and experiences gained living for almost a century. The video biography is given to the senior's family free of charge and a copy is archived at the AAA office. ●

Award Winners

South Plains Association of Governments Area Agency on Aging, Centers for Medicare and Medicaid Project Back-to-School. Contact: Jerry Casstevens or Pete H. Lara, P.O. Box 3730 Freedom Station, Lubbock, TX 79452-3730; 806/762-8721; fax 806/765-9544; email plara@spag.org; web www.spag.org

Lower Rio Grande Valley Development Council Area Agency on Aging, Medication Assistance for the Elderly. Contact: Ken Jones, Jose Gonzalez or Josefina Martinez, 311 N. 15th St., McAllen, TX 78501-4705, 956/682-3481; fax 956/631-4670; email knjones@lrgvdc.org; web www.lrgvdc.org

Northwest Piedmont Council of Governments, Help Us "Lookout" for Medicare! A Public Forum. Contact: Matthew Dolge or Kevin Robertson, 400 W. 4th St., Suite 400, Winston-Salem, NC 27101; 336/761-2111; fax 336/761-2112; email krobertson@nwpcog.dst.nc.us; web www.nwpcog.dst.nc.us

Northwest Piedmont Council of Governments, Family Caregiver Voucher Program. Contact: Matthew Dolge or Lucinda Brogden, 400 W. 4th St., Suite 400, Winston-Salem, NC 27101; 336/761-2111; fax 336/761-2112; email lbrogden@nwpcog.dst.nc.us; web www.nwpcog.dst.nc.us

Lincoln Trail Area Development District, Grayson County Food Bank. Contact: Mike Boone or Wendell Lawrence, P.O. Box, 604, Elizabethtown, KY 42701; 270/769-2393 or 270/259-4000; fax 270/769-2993 email wendell@ltadd.org; web www.ltadd.org

South Central Alabama Development Commission Area Agency on Aging, MedAssist. Contact: Tyson Howard, Sylvia Alexander or Angela Rowe, 5900 Carmichael Pl., Montgomery, AL 36117; 334/244-6903; fax 334/270-0038; email thoward@adss.state.al.us; web www.alarc.org/scadc/

East Alabama Regional Planning and Development Commission, Alabama Association of Area Agencies on Aging. Contact: Randy Frost, P.O. Box 2186, Anniston, AL 36202; 256/237-6741; fax 256/237-6763; email rfrost@adss.state.al.us; web www.alarc.org

Lee-Russell Council of Governments' Area Agency on Aging, THE ADVOCATE. Contact: Suzanne Burnette, 2207 Gateway Dr., Opelika, AL 36801; 334/749-5264; fax 334/749-6582; email sburnette@adss.state.al.us

Lee-Russell Council of Governments' Area Agency on Aging, Life History Video. Contact: Suzanne Burnette, 2207 Gateway Dr., Opelika, AL 36801; 334/749-5264; fax 334/749-6582; email sburnette@adss.state.al.us

Business and Entrepreneurial Development

Revolving loan funds, micro-loans, cluster based planning, value-added promotions, technology parks, e-commerce, virtual incubators, tax credit education, marketing campaigns, networking clubs, export feasibility studies and public facility ownerships are the directions these projects have taken to encourage and support regional business and entrepreneurial development.

Alabama Association of Regional Councils members are the beneficiaries of Alabama's initiative to establish the **Alabama Regional Revolving Loan Fund Program**. The program's \$12,000,000 capitalization was obtained by a bond issue, which will be retired with cellular phone taxes. The state's 12 regional councils, using the funds, have made 355 loans, leveraged \$117,000,000 in conventional lending and produced 6,813 jobs at a cost of \$3,776 per job. Each regional fund is capitalized at a level exceeding \$1,000,000.

The **Sierra Economic Development District**, in California, Foresters Co-Op and partners' **Biomass Utilization Business Linkage Program (BEST-BET)** uses technology to link entrepreneurs to resources. A contract with the Placer County Resource Conservation District (using California Proposition 204 funding) has supported the GIS mapping of the regional watershed (25-mile radius). The map provides links to producers and users of woody biomass material and is posted on BESTBET's website for easy access.

Valley Oak Business and Technology Park encompasses 150 acres and was created by a partnership among Southern Kentucky Economic Development Corporation, **Lake Cumberland Area Development District**, local governments and a technical college. The park's first speculative building was constructed at a cost of \$2,000,000.

This 20,000 square foot "smart" building will be equipped with high-speed telecommunications and extensive broadband connectivity. The park already houses one client, Northstar, potentially creating 150 jobs.

Androscoggin Valley Council of Governments and co-sponsors, Central Maine Technical College, Advanced MicroSystems, regional adult education offices and the Maine Small Business Development Center, developed a microenterprise **Internet Incubator**. The incubator is designed to build the region's small business capacity, by creating new and larger markets via the Internet. Thirty businesses will create customized websites, attend three web-based trainings and have access to a technology consultant for one-on-one web design and maintenance.

Helping lenders understand the New Markets Tax Credit program, as well as offering them a simpler way of taking advantage of the program's potential, were the objectives of the **New Markets Tax Credit Education Program** created by the **Community Reinvestment Fund, Inc.**, in Minnesota. A national mailing to lenders about the program was followed by teleconference trainings explaining the program's nuances in an easy-to-follow format. Web-based information, as well as frequent e-mail updates, helps keep lenders informed.

Minnesota's **Region Nine Development Commission** received a grant from the State of Minnesota's Department of Trade and Economic Development, after a tornado struck the region in 1998, to assist rural businesses. When the loans were repaid a new loan pool was created and called the **Microenterprise Loan Program**. Loans are offered for up to \$25,000

with a five-year term and negotiable interest rates. Borrowers receive technical assistance from the Small Business Development Center (SBDC).

Increasing marketing and sales in selected new export markets for local value-added wood products manufacturers through a targeted research



This value-added facility in South Dakota was developed with support from the East River Electric Power Cooperative Value-Added Loan Program.

based marketing strategy is the primary objective of **Ohio Valley Regional Development Commission's Ohio Appalachian Hardwoods Initiative**. Extensive market research identified the German and Japanese markets as two of the best prospects for hardwood exports. The commission has organized a successful trade show in Germany and is currently organizing Japanese furniture and home shows in late 2002.

The Entrepreneurs' Club was developed by the **North Central Pennsylvania Regional Planning and Development Commission** through the *Team-Pennsylvania* Entrepreneurial Network Initiative. The club, now has over 100 business members, meets monthly to receive a lecture on entrepreneurial topics such as, finance and marketing. Networking at meetings is encouraged, e.g. a five-woman vending service for olive oil gained distribution contacts with a local restaurateur and wine/gift shop.

The **Speculative Building Program** began in 1989 under a partnership between **Berkeley-Charleston-Dorchester Council of Governments**, in South Carolina and the private sector to create jobs and attract investments. The program purchases properties ranging from 25,000 to 30,000 square feet and redevelops them into a "shell building" or basic building that can be easily and quickly customized to meet a prospective purchaser's business needs. To date, five buildings have been sold creating 5,300 jobs and attracting investments of \$1,200,000.

Lower Savannah Council of Governments, in South Carolina, determined feasibility of a six-county **Regional E-Commerce Project**, after sponsoring a focus group, public meeting and survey feedback. Feedback showed that the region's small businesses had interest in expanding into e-commerce, but lacked technical expertise. The council is currently exploring funding options for implementation of a shared website. The site, "southernclique.com," will function as a virtual shopping mall to market local products. This completes phase one of the project.

The **Rural Electric Cooperative Value-Added Loan Program**, by the **East River Electric Power Cooperative, Inc.**, in South Dakota, and 22 electric distribution system members, has already provided \$3,100,000 in zero percent interest loans to 1,465 producers. Producers have invested in six value-added projects, including five new corn-processing plants and one pork-processing plant. River East contributes 55 percent and system members contribute 45 percent. The fund has leveraged nearly \$70,000,000 in equity.

The **Small Business Loan Fund** program offered by **South Central Tennessee Development District** was designed to fill gaps in other loan funds through flexibility. The development district received an agreement from First Farmers and Merchants National Bank to make a loan of \$50,000, absorb the interest and add interest income to the fund. Applicants do not have to qualify for bank products. Nine loans have been made totaling \$63,630.

The **Agricultural Commodity Export Feasibility Study**, reviewed the option of diversifying the port of

Port Lavaca-Point Comfort's petrochemical export business, by adding in direct agricultural exporting to Mexico. **Golden Crescent Regional Planning Commission**, with funding from the port and U.S. Economic Development Administration, hired a consultant to conduct the study. The study showed that the Mid-Texas Gulf Coast region, north of the port/Golden Crescent region, has sufficient commodity volumes and Mexican market demand to support direct agricultural exporting.

Virginia's **Mount Rogers Planning District Commission** is encouraging use of state legislation that allows the region's jurisdictions to jointly or publicly own, operate and share industrial site tax revenues via the **Management Assistance (Regional Industrial Facility Authority)** project. Two counties, under the authority, jointly purchased a 300-acre regional industrial technology park site and built the park's first 87,500-square-foot-shell building. Funding sources have been local, state, the Appalachian Regional Commission and the Virginia tobacco settlement. ●

Award Winners

Alabama Association of Regional Councils, Alabama Regional Revolving Loan Fund Program. Contact: Wayne Burnette, 5900 Carmichael Pl., Montgomery, AL 36117; 334/277-2221; fax 334/277-3899; email wburnette@adss.state.al.us; web www.alarc.org

Sierra Economic Development District, Biomass Utilization Business Linkage Program (BESTBET). Contact: Betty Riley, 560 Wall St., Suite F, Auburn, CA 95603; 530/823-4703; fax 530/823-4142; email betty@sedd.org; web www.sedd.org

Lake Cumberland Area Development District, Valley Oak Business and Technology Park Building Project. Contact: Stuart Carman or Donna Diaz, P.O. Box 1570, Russell Springs, KY 42642; 270/866-4200; fax 270/866-2044; email donna.diaz@mail.state.ky.us; web www.lcadd.org

Androscoggin Valley Council of Governments, Maine Micro-Enterprise Initiative Program - Internet Incubator. Contact: Robert Thompson, Chris Logan or Jane Mickeriz, 125 Manely Rd., Auburn, ME 04210; 207/783-9186; fax 207/783-5211; email clogan@avcog.org or jmickeriz@avcog.org; web www.avcog.org or www.advmcrsys.com/incubator

Community Reinvestment Fund, Inc., New Markets Tax Credit Education Program. Contact: Frank Altman or Michael Blumfield, 801 Nicollet Mall, Suite 100 West, Minneapolis, MN 55402; 612/305-2052; fax 612/338-3236; email Michael@crfusa.com; web www.crfusa.com

Region Nine Development Commission, Microenterprise Loan Program. Contact: Wes Judkins, P.O. Box 3367, Mankato, MN 56003; 507/389-8871; fax 507/387-7105; email wes@rndc.mankato.mn.us web www.rndc.org

Ohio Valley Regional Development Commission, Ohio Appalachia Hardwoods Initiative. Contact: Jeffrey Spencer or John Hemmings III, P.O. Box 728, Waverly, OH 45690; 740/947-2853; fax 740/947-3468; email jhemmings@ovrdc.org; web www.ovrdc.org

continued on page 6

North Central Pennsylvania Regional Planning and Development Commission, Entrepreneurs' Club. Contact: Ronald Kuleck, Jill Foys or Don Masisak, 651 Montmorenci Ave., Ridgway, PA 15853; 814/773-3162; fax 814/772-7045; email jfoys@ncentral.com; web www.ncentral.com/~ncrprdc

Berkeley-Charleston-Dorchester Council of Governments, Speculative Building Program. Contact: Ronald Mitchum, 5290 Rivers Ave., Suite 400, North Charleston, SC 29406; 843/529-0400; fax 843/529-0305; email RonM@bcdcog.com; web www.bcdcog.com

Lower Savannah Council of Governments, Lower Savannah Council of Governments E-Commerce Project. Contact: Eric Thompson or Jennifer Dole, P.O. Box 850, Aiken, SC 29802; 803/649-7981; fax 803/649-2248; email jdole@lscog.org; web www.lscog.org

East River Electric Power Cooperative, Inc., Rural Electric Cooperative Value-Added Loan Program. Contact: Barb Strom, P.O. Box 227, Madison, SD 57042; 605/256-4536; fax 605/256-8056; email bstrom@eastriver.coop; web www.eastriver.coop

South Central Tennessee Development District, Small Business Loan Fund. Contact: Joe Max Williams or Doug Williams, P.O. Box 1346, Columbia, TN 38402-1346; 931/381-2040; fax 931/381-2053; email dwilliams@sctdd.org; web www.sctdd.org

Golden Crescent Regional Planning Commission, Agricultural Commodity Export Feasibility Study. Contact: Patrick Kennedy, P.O. Box 2028, Victoria, TX 77902; 361/578-1587; fax 361/578-8865; email gcrpc@icsi.net; web www.gcrpc.org

Mount Rogers Planning District Commission, Management Assistance (Regional Industrial Facility Authority). Contact: Thomas Taylor or David Barrett, 1021 Terrace Dr., Marion, VA 24354; 276/783-5103; fax 276/783-6949; email ttaylor@mrpdc.org; web www.mrpdc.org

Community, Economic and Social Development

Community, economic and social development usually requires partnerships. These projects and programs exhibit the benefits and possibilities of community and regional collaboration. They display outcomes that avoid service duplications, provide resources, offer service enhancements, generate business opportunities and enrich the quality of life for all.



A New London Development Corp's redevelopment site in Connecticut that has spurred a Social Justice Initiative.

Twice a week for ten-weeks the **West Alabama Regional Commission** conducted **Conversational Spanish for West Alabama Regional Staff** classes. Classes focused on traditional greetings and introductions, numbers, days of the week, months of the year and words and phrases specific to the commission's programs and services. Instructors used verbal instructions and printed materials as the primary teaching media. The attending staffers learned basic Spanish words and phrases.

The **Yavapai Resource Network** was founded in 2000 by the **Northern Arizona Council of Governments** to provide Yavapai County's (8,125 square miles) social service agencies the option to combine program resources and reduce community service duplications. The network provides agencies with co-case management and expansion of job search, housing, food and clothing services and access. There are now over 20

youth, adult and elderly service organizations participating.

In 2001 the **New London Development Corporation's Social Justice Initiative**, in Connecticut, began working on economic self-sufficiency programs to target development issues, such as job creation and housing. Community collaborations ensued to assist the development corporation with minority population representation in these areas. Some of the initiative's outcomes are the administration of employment training for 200 residents, property acquisitions for affordable housing, homeless shelter, enhanced after school programs, micro-entrepreneurship and applications for over \$3,000,000 in community resources.

The **Four Corners Public Services Study** conducted by the **East Central and Central Florida Regional Planning Councils** and funded by the four member counties, provides a comprehensive inventory of public services for this four-county unincorporated area (pop. 27,500), enabling growth projections and determining public service consolidations, e.g., a single inter-county school and library. The area's citizens groups are using the study to establish shared parks and the counties are using it to develop an inter-county road grid.

The **Southeastern Illinois Regional Planning and Development Commission** has taken a lead role in promoting the state's coal infrastructure program and the **Revitalization of the Coal Industry in Southeastern Illinois**. The commission helped acquire financing for mining incentives, start-ups, expansions, access road improvements, loading facility upgrades and water system improvements essential to coal producers. Over 1,771 jobs have been created/retained and \$52.2 million in public and private investments have been acquired.

As a matter of enhancing land use planning, smart growth implementation, economic planning and targeting brownfields redevelopment, the **Northwest Regional Development Commission**, in Minnesota, is on track with a **Vacant Building Survey** project. The survey is compiling a list of all vacant, abandoned or underused buildings, from gas stations to churches, in the seven-county region. The building list will be posted on the commission's website. Project funding was acquired from the U.S. Economic Development Administration.

North Central Pennsylvania Regional Planning and Development Commission succeeded in simultaneously providing educational opportunities and community development plans with the **Landscape as Strategy for Development of Bradford, Pennsylvania** project. The project enlisted a partnership between Cornell University and Bradford community leaders, allowing students to study Bradford's economic and cultural potentials and recommend land use enhancements, such as increasing downtown accessibility. Bradford benefited in receiving cost-free innovative development plans, and students earned university credits and experience.

South Dakota's **Northeast Council of Governments** and community partners have implemented the U.S. Department of Justice **Weed and Seed Project** in **Brown County**. The goal is to "weed out" criminals involved in violent crime and drug abuse and "seed in" human services directed at crime prevention, intervention, treatment and neighborhood revitalization. The project activities include maintaining four Safe Haven facilities, promoting home maintenance and community cleanup services, increasing law enforcement surveillance and enhancing crime mapping.

The **Upper Cumberland Development District**, in Tennessee, designed the **Booze It and Lose It Program** to reduce the 14-county

region's number of Driving Under the Influence (DUI) injuries and fatalities and prevent the associated public/private economic losses. The region has a high per capita number of DUI offenses. Voluntarily, 15 law enforcement agencies have undertaken interventions to target impaired drivers due to drinking. Funding was acquired from the Governor's highway safety office.

The "**Living Towns**" project focuses on the heritage of 15 municipalities in the **Northern Shenandoah Valley**

Regional Commission's region. The project advocates a heritage identity and balanced-growth, complimentary to the commission's rural transportation program. The Shenandoah Valley Civil War Battlefields Historic District, in Virginia, serves as the unifying heritage story, with towns and cities acting as tourism hubs. Ensuring quality amenities offered by the 15 municipalities is central to creating visitor satisfaction and integral to the project's tourism-side. ●

Award Winners

West Alabama Regional Commission, Conversational Spanish for West Alabama Regional Commission Staff. Contact: Robert B. Lake, 4200 Highway 69 North, Suite 1, Northport, AL 35473-2048; 205/333-2990; fax 205/333-2713; email blake@adss.state.al.us; web www.wapdc.org

Northern Arizona Council of Governments, Yavapai Resource Network. Contact: Kenneth Sweet or Teri Drew, 221 North Marina St., Suite 201, Prescott, AZ 86301; 928/778-1422; fax 928/778-1756; email tdrew@cableone.net; web www.nacog.org

New London Development Corporation, Social Justice Initiative. Contact: Laura Berry, 165 State St., Suite 313, New London, CT 06426; 860/447-8011 ext. 18; fax 860/447-3833; email lberry@nldc.org; web www.nldc.org

East Central Florida Regional Planning Council and Central Florida Regional Planning Council, Four Corners Public Services Study. Contact: Sandra Glenn or Greg Gologowski, East Central Florida RPC, 631 N. Wymore Rd., Maitland, FL 32751; 407/623-1075; fax 407/623-1084; email greg@ecfrpc.org; web www.ecfrpc.org/FourCorners.htm

Southeastern Illinois Regional Planning and Development Commission, Revitalization of the Coal Industry in Southeastern Illinois. Contact: Kimberly Watson, P.O. Box 606, Harrisburg, IL 62946; 618/252-7463; fax 618/252-7464; email sirpdc@midamer.net; web www.sirpdc.org

Northwest Regional Development Commission, Vacant Building Survey. Contact: Leon Heath or Kay Hegge, 115 S. Main, Warren, MN 56762; 218/745-6733; fax 218/745-6438; email khegge@nwrdc.org; web www.nwrdc.org

North Central Pennsylvania Regional Planning and Development Commission, Landscape as Strategy for Development of Bradford, PA. Contact: Ronald Kuleck or Erin Dixon, 651 Montmorenci Ave., Ridgway, PA 15853; 814/773-3162; fax 814/772-7045; email edixon@ncentral.com; web www.ncentral.com/~ncrprpdc

Northeast Council of Governments, Brown County Weed and Seed Project. Contact: Faye Kann, P.O. Box, Aberdeen, SD 57402; 605/626-2595; fax 605/626-2975; email faye.necog@midconetwork.com; web home.midco.net/~necog/

Upper Cumberland Development District, Booze It and Lose It: DUI Injury, Fatality and Economic Loss Prevention. Contact: Wendy Askins or Patty Jones, 1225 S. Willow Ave., Cookeville, TN 38506; 931/432-4111; fax 931/432-6010; email pjones@ucdd.org; web www.ucdd.org

Northern Shenandoah Valley Regional Commission, Living Towns of Northern Shenandoah Valley. Contact: Tom Christoffel or Stephen Kerr, 103 E. Sixth St., Front Royal, VA 22630; 540/636-8800; fax 540/635-4147; email nsrvr@shentel.net; web www.lfpdc7.state.va.us

Emergency Response and Mitigation

Whether it is preparing for the threat of terrorism, tornadoes, floods, fire or other natural disaster, regional development organizations are demonstrating the strength of intergovernmental partnerships to minimize disaster impacts. Regional projects like these are underway across the nation.

The **Middle Georgia Hazard Mitigation Resource Compact Disc (CD)** is an interactive software program created by **Middle Georgia Regional Development Center** with EDA funding. The CD assists local emergency management professionals, businesses and local officials in disaster mitigation. It contains a regional mitigation study, compilation of local emergency plans, GIS-generated map/data gallery, map viewing and printing programs (e.g. Acrobat Reader v4.0) and a mitigation brochure for manufacturers located in floodplains. The CD is compatible with Microsoft Windows.

South Georgia Regional

Development Center's (RDC) Damping High Fire Insurance Rates Using GIS Technology project demonstrates the value of using technology to improve fire fighting resources and fire prevention. Funded by the development center, through a cooperative effort between the city of Valdosta and Lowndes County, the project provides firefighters with regional geo-data, such as road and utility locations. This approach promoted improved Insurance Services Organization fire ratings, and saved money for the communities' citizens and businesses.

Local cooperation among 19 political



South Carolina Appalachian COG Homeland Security Training Session.

subdivisions was successfully facilitated by the **River Country Economic Development District** to implement the **Eight County Early Warning System Enhancement Project for Southeast Nebraska**. The project cooperative purchased 25 new outdoor emergency warning sirens to improve public safety. Buying "bulk" through a shared purchase saved local governments a total of \$116,742. Funding for the project came from the U.S. Economic Development Administration and local contributions.

Since September 11th the **South Carolina Appalachian Council of Governments** has conducted a series of **Homeland Security Training** sessions entitled "Terrorism Awareness." The classes and seminars include: awareness for elected officials, a public water/sewer system seminar, briefings by nuclear plant officials and a briefing by the state's homeland security director. The Council is currently conducting awareness-level training for emergency first responders on potential chemical, biological and radiological threats. ●

Award Winners

Middle Georgia Regional Development Center, Middle Georgia Hazard Mitigation Resource CD. Contact: James Tonn or Brent Lanford, 175-C Emery Hwy., Macon, GA 31217; 478/751-6160; fax 478/751-6517; email blanford@mgrdc.org; web www.mgrdc.org

South Georgia Regional Development Center, Damping High Fire Insurance Rates Using GIS Technology. Contact: John Leonard or Chris Strom, 327 W. Savannah Ave., Valdosta, GA 31601; 229/333-5277 ext. 142; fax 229/333-5312; email cstrom@sgrdc.com; web www.sgrdc.com or <http://gisweb.sgrdc.com>

River Country Economic Development District, Eight County Early Warning System Enhancement Project for Southeast Nebraska. Contact: George Frye or Terry Meier, 2631 "O" St., Lincoln, NE 68510-1398; 404/475-2560; fax 404/475-2794; email senddlincoln@alltel.net

South Carolina Appalachian Council of Governments, Homeland Security Training. Contact: Bob Strother or Joe Newton, P.O. Box 6668, Greenville, SC 29606; 864/242-9733; fax 864/242-6957; email newton@scacog.org; web www.scacog.org



A South Carolina Appalachian COG security advisory system display.

Environment: Water, Air, Brownfields, Solid Waste and Land Use

The following projects and programs highlight the benefits gained from regional approaches to environmental management in the areas of water quality, ecosystems, air quality, solid waste recycling, land use planning, smart growth and brownfields redevelopment.

The **NonPoint Source Pollution Public Outreach Program** gained strength when the **Central Savannah River Area Regional Development Center**, in Georgia, purchased a non-point source pollution model and organized water quality workshops and demonstrations for local government elected officials, elementary students, civic organizations and the public. The model demonstrates where nonpoint source pollution comes from and how to reduce it. Some of the program's results include an increase in local pollution mitigation projects.



Georgia's Central Savannah River Area RDC demonstrates Non Point Source Solutions in the classroom.

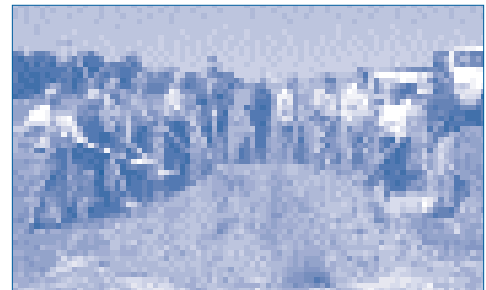
The City of Griffin watersheds were close to breaching national water quality standards and failing to diminish and eliminate pollutants, before the city implemented **Georgia's First Stormwater Utility for the City of Griffin**. Local partners, like **McIntosh Trail Regional Development Center** assisted in

leveraging funding from sources including the Federal Emergency Management Agency (FEMA), for stormwater GIS mapping, bacteria tracking and drainage modeling. The Environmental Protection Agency (EPA) has cited the program's pollutant removal techniques as a best management practice.

The **Northwest Georgia Regional Water Resources Partnership Organization** was created by the **North Georgia Regional Development Center and Coosa Valley Regional Development Center**. The regional development centers' technical assistance and membership fees from water permit holders, local governments and other interest groups, support the organization's mission to provide watershed education; fund and implement watershed assessments, water supply studies and storm water management plans; and coordinate regional activities under the proposed state comprehensive water management plan.

Western Illinois Regional Council, the solid waste management organization for a three-county rural area, created a **Tri-County Solid Waste Management Recycling Awareness Contest** to promote recycling to youth. The *'Can-Do' Can Recycling* contest challenged 100 fourth graders to collect the greatest number of aluminum cans for their county in eight weeks. Over 4,796 pounds of aluminum, equaling 158,200 cans, were collected. Winning classrooms traveled to Chicago's Museum of Science and Industry "Reusable City" exhibition.

Indiana 15 Regional Planning Commission is using Geographical Information Systems (GIS) and Global Positioning Systems (GPS) technology to generate a six-county **Regional Brownfields Relational Location Information** web-accessible, data source. The commission is developing a digital map layer of brownfield sites and their assessment, cleanup and redevelopment status. Sites are chosen according to the new legal brownfields definition, including mine-scarred lands, petroleum contaminations and controlled substance contaminations, e.g., former gas stations and narcotic (methamphetamine) labs.



Gateway ADD Cave Run Commission with Governor Paul Patton(D-KY, 7th from left) break ground on water facility.

The construction of the **Morehead/Rowan County/Morehead State University Recycling Center**, in Kentucky, was completed in November 2000. The 24-hour recycling center has resulted in significant cost savings for the two counties and university and is now being used by seven counties and over 60 local businesses. During the first year of operation, the facility recycling outputs increased by more than 500,000 pounds.

Several communities in the **Gateway Area Development District** began experiencing water shortages in 1999, followed by use restrictions and new

Environment continued on page 10

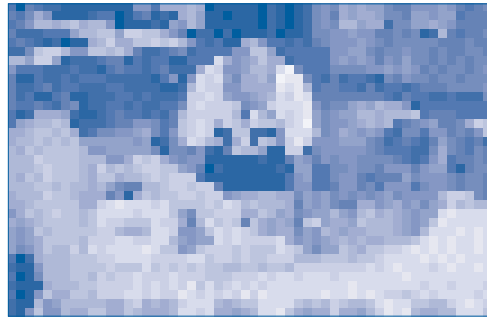
continued from page 9

water meter waiting lists, so five local governments and the district formed a **Regional Water Commission – Cave Run Water Commission**. The commission has since worked to cooperatively pursue construction of a water plant and obtain \$12,000,000 for project costs. The commission has acquired \$5,050,000 and has satisfied federal and state requirements for construction.

The **Kentuckiana Regional Planning and Development Agency's (KIPDA) Water/Wastewater Infrastructure Partnership**, in Kentucky, formed in January 2001, provides a forum for regional leaders to discuss and address mounting and costly infrastructure needs. The 21-member partnership is comprised of county judges, executives, mayors, water system managers, operators and engineers. Significant results have been the completion of two water system mergers (with two more in negotiation) and attainment of 27 state grants totaling \$3,730,102.

Logan-Todd Regional Water Commission, formed by the **Pennyriple Area Development District**, in Kentucky, and community partners, aims to provide long term, cost effective safe drinking water services to two counties and one city. The commission is underway with the construction of a ten million gallon per day water treatment plant, eliminating nine treatment plants and combining 12 water systems. The projected construction cost is \$75,000,000. The largest portion of funding (\$48,200,000) is from USDA Rural Development.

Land-of-Sky Regional Council, in North Carolina, joined the **Mills River Partnership** and coordinated a grant application to the North Carolina Clean Water Management Trust Fund, furthering the partnership's mission to remove watershed impairments. Over \$1,500,000 has come from the trust with local, private foundation and U.S. Forest Service



The team leaders from each sponsor agency reviewing the identified implementation items at the work session to develop the North Carolina DOT's Ecosystem Enhancement Program. L-R: Greg Thorpe (DENR), Bill Gilmore (DOT), and Scott McLendon (USACE).

match and from EPA (federal Section 319 – Clean Water Act.) The funds were used to hire a full-time watershed project coordinator and support other efforts, such as securing conservation easements.

A national model, the **Ecosystem Enhancement Program** is being established collaboratively between the **North Carolina Department of Transportation**, state Department of Environment and Natural Resources and the US Army Corps of Engineers – Wilmington District. The program's mission is to protect the state's natural resources through the assessment, restoration, enhancement and preservation of ecosystem functions and to compensate for transportation and private sector developmental impacts at the watershed level.

The **North Carolina Department of Transportation**, the North Carolina Department of Environment and Natural Resources and North Carolina State University Center for Transportation and Environment co-sponsored the **North Carolina Air Quality Roundtable**. The ongoing workshops bring together 30 different stakeholder groups to cooperatively act on improving state air quality. Stakeholders have identified three emphasis areas: decision-maker and media education, public education and agency technical capacity.

Rural South Carolina's **Catawba River Task Force's** mission is to protect the river's natural and cultural resources. It is being implemented by the **Catawba Regional Council of Governments** and other task force members, following goals set forth in the river corridor plan. The council and task force members have already established protection for two-thirds of the region's 30-mile river frontage, by means of land acquisitions, securing conservation easements and adjusting local ordinances.

Berkeley-Charleston-Dorchester Council of Governments "Growth Options" program in South Carolina, develops and implements a model strategy, linking land use, transporta-



Individuals from throughout the Berkeley-Charleston-Dorchester region gather to discuss issues at a "Growth Options" Partnering Committee meeting in South Carolina.

tion and infrastructure planning and policymaking. The council and Charleston Area Metropolitan Planning Organization (MPO) are undertaking the development of a broad group of project partners, analyzing regional growth pattern/trends, evaluating fiscal and environmental costs/benefits and investigating smart growth strategies. The program vision is to encourage a metropolitan region that is sustainable, environmentally responsible and proactive towards growth. ●

continued on page 11

Award Winners

Central Savannah River Area Regional Development Center, Non Point Source Pollution Public Outreach Program. Contact: Lori Sand or Andy Crosson, 3023 Riverwatch Pkwy., Suite A, Augusta, GA 30907; 706/210-2000; fax 706/210-2006; email lsand@csrardc.org; web www.csrardc.org

McIntosh Trail Regional Development Center, Georgia's First Stormwater Utility for the City of Griffin. Contact: Lanier Boatwright, P.O. Box 818, Griffin, GA 30224; 770/227-6300; fax 770/227-6488; email lboatwright@cityofgriffin.com; web www.mtrdc.org

North Georgia Regional Development Center and Coosa Valley Regional Development Center, Northwest Georgia Regional Water Resources Partnership Organization. Contact: Barry Tarter or Larry Vanden Bosch, North Georgia RDC, 503 W. Waugh St., Dalton, GA 30720; 706/272-2300; fax 706/272-2253; email ngrdc@ngrdc.org; web www.ngrdc.org; Contact: James Layton or Kristin Taylor, Coosa Valley RDC, P.O. Box 1793, Rome, GA 30162; 706/295-6485; fax 706/295-6665; email cvrdc@cvrdc.org; web www.cvrdc.org

Western Illinois Regional Council, Tri-County Solid Waste Management Recycling Awareness Contest. Contact: Suzan Nash or Pam Miner, 223 S. Randolph St., Macomb, IL 61455; 309/837-3941; fax 309/836-3640; email wirpc@wirpc.org; web www.wirpc.org

Indiana 15 Regional Planning Commission, Regional Brownfields Relational Location Information. Contact: Debby Beavin, 221 East First St., Ferdinand, IN 47532; 812/367-8455; fax 812/367-8171; email debby@ind15rpc.org

Gateway Area Development District, Rowan/Morehead/Morehead State University Community Recycling Center. Contact: Gail Wright, Pamela Farmer or April Haight, P.O. Box 1070, Owingsville, KY 40360; 606/674-6355; fax 606/674-6658; email pamelas.farmer@mail.state.ky.us

Gateway Area Development District, Regional Water Commission. Contact: Gail Wright or Pamela Farmer, P.O. Box 1070, Owingsville, KY 40360; 606/674-6355; fax 606/674-6658; email pamelas.farmer@mail.state.ky.us

Kentuckiana Regional Planning and Development Agency (KIPDA), KIPDA Water/Wastewater Infrastructure Partnership. Contact: Jack Scriber, 11520 Commonwealth Dr., Louisville, KY 40299; 502/266-6084; fax 502/266-5047; email tina.snyder@mail.state.ky.us; web www.kipda.org

Pennyrile Area Development District, Logan-Todd Regional Water Commission. Contact: Dan Bozarth or Chris Sutton, 300 Hammond Dr., Hopkinsville, KY 42240; 270/886-9484; fax 270/886-3211; email chris.Sutton@mail.state.ky.us; web www.peadd.org

Land-of-Sky Regional Council, Region B, Mills River Partnership. Contact: Bill Eaker, 25 Heritage Dr., Asheville, NC 28806; 828/251-6622; fax 828/251-6353; email bill@landofsky.org; web www.landofsky.org

North Carolina Department of Transportation, Ecosystem Enhancement Program. Contact: Lyndo Tippet or Roger Sheats, 1501 Mail Service Center, Raleigh, NC 27699-1501; 919/733-2520; fax 919/733-9150; email rsheats@dot.state.nc.us; web www.ncdot.org

North Carolina Department of Transportation, North Carolina Air Quality Roundtable. Contact: Lyndo Tippet or David Hyder, P.E., 1501 Mail Service Center, Raleigh, NC 27699-1501; 919/250-4092; fax 919/250-4208; email dhyder@dot.state.nc.us; www.itre.ncsu.edu/cte/Ncairquality/index.html

Catawba Regional Council of Governments, Catawba River Task Force. Contact: Harold Shapiro, P.O. Box 450, Rock Hill, SC 29731; 803/327-9041; fax 803/327-1912; email hshapiro@catawbacog.org; web www.state.sc.us/cogs/catawba/

Berkeley-Charleston-Dorchester Council of Governments, Growth Options: Development and Implementation of a Model Program, Linking Land Use, Transportation and Infrastructure. Contact: Ronald Mitchum or Dan Hatley, 5290 Rivers Ave., Suite 400, North Charleston, SC 29406; 843/529-0400; fax 843/529-0305; email danh@bcdkog.com; web www.bcdkog.com

Housing

Regional efforts to improve housing opportunities for low-income and elderly people are central to these programs and projects. Communities are benefiting from revitalization and increased tax bases. Homebuyer education and outreach have contributed to program successes.

The Arizona Governor's Office of Housing, Northland Pioneer College and the **Northern Arizona Council of Governments**, partnered to provide funding for the **Regional Homebuyer Education College Course Delivery**. The course provides purchasing education to first time homebuyers in the region's northeastern area (23,000 square miles) via an interactive video broadcast at ten viewing sites. The course is state approved and participants receive .5 credit hours at no charge.

Communities in **Southern Iowa Council of Governments'** eight-county region can now cost-effectively clean up properties and increase tax bases through the council's **Housing Site Improvement Grant Program**. Cities receive reimbursements of 50 percent for costs incurred in home acquisition, demolition and rebuild preparation costs. Homes are rebuilt within two

years and sold to individuals at 110 percent below the median household income level. One partnership between a city, three high schools and a college trade school has already enabled rebuilding.

The **Kerr-Tar Regional Council of Governments**, in North Carolina, partnered with county, city, school, aging program entities and a private



Rehabilitation of the Old West End School in North Carolina is under construction to develop 10 elderly apartments and expand Senior Center space for activities including space for a new Adult Day Care.

developer to undertake the **Vance County Housing Project**. The project upgrades and expands the existing senior center, develops 31 elderly apartments and an adult day care and redevelops a historic school. Project construction cost is \$3,250,000. Critical funding

to remove hazardous material and improve infrastructure came from a Community Development Block Grant (CDBG).

Capital Area Planning Council, in Texas, via its housing finance corporation, partnered with local tax jurisdictions to develop the **Affordable Housing Infill Program**. The program transforms non-producing infill lots into home sites. Using Geographical Information Systems (GIS), rural vacant lots with back taxes owed were mapped. The taxing districts then assisted with lot ownership transfers to the corporation. The corporation then guaranteed interim construction loans and a partnering builder constructed the houses. In-fill home sale prices average \$70,000. ●



An example of a refurbished home made possible by the Southern Iowa COG Housing Site Improvement Grant Program.

Award Winners

Northern Arizona Council of Governments, Regional Homebuyer Education College Course Delivery. Contact: Kenneth Sweet or Margaret Keener, 119 E. Aspen Ave., Flagstaff, AZ 86001; 928/213-5211; fax 928/773-1135; email mkeener@nacog.org; web www.nacog.org

Southern Iowa Council of Governments, Housing Site Improvement Grant Program. Contact: Tim Ostroski, 101E. Montgomery St., Creston, IA 50801-0102; 641/782-8491; fax 641/782-8492; email ostroski@sicog.com; web www.sicog.com

Kerr-Tar Regional Council of Governments, Vance County Housing Project. Contact: Neil Mallory or Steve Norwood, P.O. Box 709, Henderson, NC 27536; 252/436-2040; fax 252/436-2055; email snorwood@kerrtarco.org; web www.kerrtarco.org

Capital Area Planning Council, Affordable Housing Infill Program. Contact: Betty Voights, 2512 S. Interstate 35, Suite 200, Austin, TX 78704; 512/916-6008; fax 512/916-6001; email bavoights@capco.state.tx.us; web www.capco.state.tx.us

Local Government Assistance

The following projects and programs provide a snapshot of how regional development organizations are using local government assistance to promote and increase public interest in smart, regionally-based economic development. The technical assistance includes planning, training, technology, redevelopment and education.

Focused Future II – City of Cottonwood, Arizona is a year-long pilot funded and facilitated by the **Arizona Public Service Community Relations and Economic Development Department**. The pilot generated a multitude of planning and focus groups to assess, examine and monitor Cottonwood's economic trends, challenges and future. The end result was the production of a realistic economic strategic plan adopted by Cottonwood local officials and the general public for implementation.

The **Training Sessions for Planning Commissions and Boards of Adjustments**, designed and conducted by the **Barren River Area Development District** in Kentucky, and Western Kentucky University's Center for Local Governments joint program, have provided local planning and zoning commissions and boards of adjustment members with annual and introductory training as mandated by Kentucky. Timely training on topics such as, ethics and legal obligations has been provided to 111 registrants.

The **Local Official Training Initiative** is an ongoing program administered by the **Lincoln Trail Area Development District** in Kentucky. The district collaborates with local, state and federal organizations to offer training for county officials, elected officials and board/commission members. Attendance averages 20 registrants per workshop, often free of charge and conveniently scheduled. Funding was acquired through the Kentucky Department for



The South Carolina Appalachian COG conducted a needs assessment survey for each town to identify services.

Local Government and U.S. Economic Development Administration.

The **Building Inspection Services** program was designed and is administered by the **Mid-Minnesota Development Commission**. Currently, services are offered on a contract basis to 15 rural communities who have adopted state building codes. The commission employs two full-time, certified building inspectors for rehabilitation, hazardous building, handicap accessibility and lead-based paint inspections, as well as making risk assessments, addressing asbestos concerns and final inspection of housing grant programs.

The **Perryville Center for Industry and Education** project entails redeveloping a former seminary and preserving a piece of local history. The **Southeast Missouri Regional Planning and Economic Development Commission** and local government partners, have gathered funding from nine separate sources to redevelop the seminary into a university satellite campus. A key objective is to maintain the site's historical significance on the National Historic Register, as the first higher education institution west of the Mississippi River.

Northwest Piedmont Council of Governments, in North Carolina, and the regional Workforce Development Board took the lead in **Project Re-Entry**, which provides a collaborative service system for recently released prisoners or ex-offenders and their reintegration into communities within the region. The collaborative service-system, links the North Carolina Department of Corrections, community organizations and local employers together to assist ex-offenders before and after release with services, such as job training and transition planning.

Five small (population up to 1,100) distressed communities in the **South Carolina Appalachian Council of Governments'** region volunteered for the council's **Small Towns Technical Assistance Program**. The program first conducted a needs assessment survey for each town to identify service needs and then provide the service. Some technical assistance included strategic planning sessions, budgeting, utility rate studies and custom computer programming. Partial funding was acquired from the Appalachian Regional Commission. ●



Six mile township in the South Carolina Appalachian COG's region, was one of five distressed communities to receive technical assistance in needs assessment and planning.

Local Govt. continued on page 14

Award Winners

Arizona Public Service, Focused Future II - City of Cottonwood, Arizona. Contact: Sally Odette or Evelyn Casuga, PO Box 5399, M.S. 8010, Phoenix, AZ 85072-3999; 602/250-4240; fax 602/250-3360; email sally.odette@pinaclewest.com; web www.aps.com

Barren River Area Development District, Training Sessions for Planning Commissions and Boards of Adjustments. Contact: Dot Darby-Paschall or Jack Eversole, P.O. Box 90005, Bowling Green, KY 42102-9005; 270/781-2381; fax 270/842-0768; email jack.eversole@bradd.org; web www.bradd.org

Lincoln Trail Area Development District, Local Officials Training Initiative. Contact: Wendell Lawrence, P.O. Box, 604, Elizabethtown, KY 42701; 270/769-2393; fax 270/769-2993; email wendell@ltadd.org; web www.ltadd.org

Mid-Minnesota Development Commission, Building Inspection Services. Contact: Donn Winckler or Butch Schulte, 920 Willmar, MN 56201; 320/235-8504; fax 320/235-4329; email midmndevcom@willmar.com; web www.mmrhc.org

Southeast Missouri Regional Planning and Economic Development Commission, The Perryville Center for Industry and Education. Contact: Chauncey Buchheit or Thomas Tucker, P.O. Box 366, Perryville, MO 63775; 573/547-8357; fax 573/547-7283; email semorpc@semorpc.org; web www.semorpc.org

Northwest Piedmont Council of Governments, Project Re-Entry. Contact: Matthew Dolge or Theresa Reynolds, 400 W. 4th St., Suite 400, Winston-Salem, NC 27101; 336/761-2111; fax 336/761-2112; email treynolds@nwpcog.dst.nc.us; web www.nwpcog.dst.nc.us

South Carolina Appalachian Council of Governments, Small Towns Technical Assistance Program. Contact: Bob Strother or Joe Newton, P.O. Box 6668, Greenville, SC 29606; 864/242-9733; fax 864/242-6957; email newton@scacog.org; web www.scacog.org

Economic Development Finance Service 2002 Annual Loan Fund Training Institute October 17 - 22, 2002 Old Town Alexandria, Virginia

- ◆ Strengthen your skills in loan fund management and handling problem loans.
- ◆ Find out about traditional and alternative capital sources.
- ◆ Learn how to more effectively promote economic development in your region.
- ◆ Stay on top of policy issues.

For more information visit www.nado.org/meetings or call 202/624-7806.



Technology

Technology is becoming a key tool in regional development. These projects and programs illustrate techniques regional development organizations are using to reduce community costs, improve public safety and provide access, technical assistance and accurate data sources.

Limited map access, impossible map mobility, inaccuracies and the absence of smart growth planning in on-site land use decision-making led the **South Georgia Regional Development Center** and partners to develop **Mobile GIS for Development Permitting**. The project equips permitting officials with pocket PCs that include ArcPad software and GIS data, giving the officials access to regional maps and ability to make accurate on-site decisions in accordance with community environmental preservation plans.

The **Illinois Institute for Rural Affairs'** GIS unit created a software program to **Provide Digital Spatial Data to Regional Planning Agencies**, giving agencies the ability to easily analyze and include spatial data into development planning. Planning agency staff received software training and guidance on how to incorporate spatial data into daily activities, e.g. analyzing neighborhood demographics for grant applications. The software is built on Excel and ArcView and operates in a Windows environment.

Buffalo Trace Area Development District, in Kentucky, accomplished the **Fleming County Mapping** project by using a Global Positioning System (GPS) to collect and record road centerlines and precise locations. A building/structures database was developed containing pictures, resident information, parcel boundaries and distance-based addresses. This mapping resource enables the county

to upgrade its emergency response system that determines precise land line and mobile phone call locations. Overall costs were \$40,000 to \$50,000.

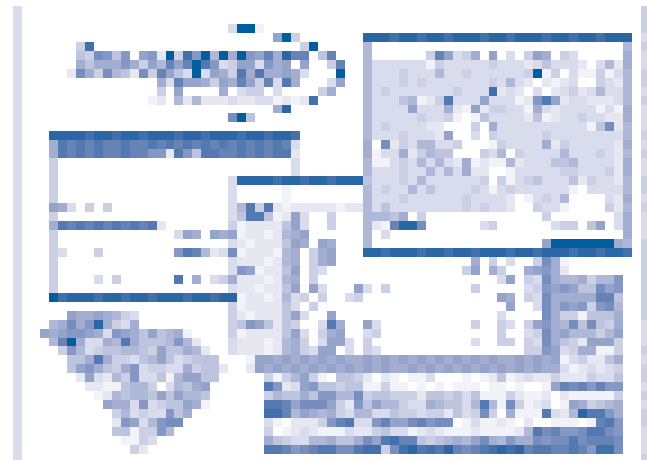
Eight of nine counties in the **Kentuckiana Regional Planning and Development Agency (KIPDA)**, region do not have the technology or support staff needed to create their own geographic data. To fill the gap, KIPDA created a **Regional Geographic Information System (GIS)**. The agency worked with local elected officials and utilities to assess data needs and compile information, ensuring usefulness of data and future updates. The resulting benefits include improved decision-making, effective community planning and emergency response upgrades.

Services provided by **Arrowhead Regional Development Commission's Local Government GIS Staffing Assistance** program, located in Minnesota, for the seven-county region include software training, data management, spatial analysis and cartographics. Most services are performed on-site and require a significant amount of travel, because requests primarily come from rural areas where technology and staff are often absent. In one case, the commission's GIS staff must travel 160 miles three days out of each month.

The **Broadband on the Farm** project is the outcome of the Minnesota

Northwest Regional Development Commission's quest to identify and fill gaps in regional high-speed broadband services. One project product has been the rural community of Red River Valley's new high-speed, two-way Internet connectivity through "fixed wireless" technology. The connection offers speeds of up to 1,024kbs. Grants and in-kind services totaling \$51,600, were received from the state, Rural Access, Inc. and Halstad Telephone Company.

Santee-Lynches Regional Council of Governments in South Carolina is using its **Regional Building Permits Analysis** project as a smart growth,



InfoMentum, a program of the Appalachian Council of Governments, in South Carolina, is a catalyst for coordination of regional GIS activities and data partnerships.

planning tool. A data collection of the region's building permit applications will be entered into Microsoft Access and used to make Geographic Information Systems (GIS) map layers. Planners will use the map layers to see current growth patterns, e.g. new subdivision development, to determine responsive land use, capital improvement planning and economic development opportunities.

Technology continued on page 16

InfoMentum provides a decision support system to aid regional marketing, industrial recruitment, and economic development in upstate South Carolina. It combines a customized Geographic Information System (GIS) application with an extensive socio-economic database and industrial property inventories. A public/private board representing county governments, private sector entities, and the **Appalachian Council of Governments** has provided project funding and direction. **InfoMentum** is a catalyst for coordination of regional GIS activities and data partnerships.

LENOWISCO Planning District Commission's LENOWISCO RAN (Rural Area Network Broadband Initiative), in southwest Virginia, is preparing the region for future cluster based developments. The initiative proposes to ensure regional, reliable and affordable broadband services by developing a local private-based, high speed telecommunications network. One public service authority has already agreed to route fiber-optic cable inside water trenches. Virginia Tobacco settlement funds will be used for seamless connectivity to Tennessee and partnering Cumberland Plateau Planning District.

Virginia's **Northern Shenandoah Valley Regional Commission**, in partnership with the Lord Fairfax Community College, developed **Community Applied Information Technology (CAIT)** to implement the Technology Deployment element of the region's 1997 Strategic Plan. CAIT teams, community college students, work with client agencies to develop technology solutions. There is no cost to client agencies. Students will have the opportunity to earn tuition for follow-up projects. The Commission provides operational funding via an Intelligent Transportation Systems (ITS) grant for workforce development. ●

Award Winners

South Georgia Regional Development Center, Mobile GIS for Development Permitting. Contact: John Leonard or Chris Strom, 327 W. Savannah Ave., Valdosta, GA 31601; 229/333-5277 ext. 142; fax 229/333-5312; email cstrom@sgrdc.com; web www.sgrdc.com

Illinois Institute for Rural Affairs, Providing Digital Spatial Data to Regional Planning Agencies. Contact: Norm Walzer, Western Illinois University, 518 Stipes Hall, Macomb, IL 61455; 309/298-2237; fax 309/298-2142; email N-Walzer@wiu.edu; web www.iira.org

Buffalo Trace Area Development District, Fleming County Mapping. Contact: Stephen Miller, P.O. Box 460, Maysville, KY 41056; 606/564-6894; fax 606/564-0955; email steve.miller@mail.state.ky.us; web www.state.ky.us/agencies/btrc

Kentuckiana Regional Planning and Development Agency (KIPDA), Regional GIS. Contact: Jack Scriber, 11520 Commonwealth Dr., Louisville, KY 40299; 502/266-6084; fax 502/266-5047; email tina.snyder@mail.state.ky.us; web www.kipda.org

Arrowhead Regional Development Commission, Local Government GIS Staffing Assistance. Contact: David Yapel or John Chell, 221 W. First St., Duluth, MN 55802; 218/722-5515; fax 218/529-7592; email dyapel@ardc.org; web www.ardc.org

Northwest Regional Development Commission, Broadband on the Farm. Contact: Leon Heath or Kay Hegge, 115 S. Main, Warren, MN 56762; 218/745-6733; fax 218/745-6438; email khegge@nwrdc.org; web www.nwrdc.org

Santee-Lynches Regional Council of Governments, Regional Building Permits Analysis. Contact: James Darby, Jr., P.O. Box 1837, Sumter, SC 29151; 803/775-7381; fax 803/773-9903; email slrcog@slcog.org; web www.slcog.state.sc.us/

South Carolina Appalachian Council of Governments, InfoMentum-A Decision Support Tool for Upstate South Carolina. Contact: Bob Strother or Carol Andersen, P.O. Box 6668, Greenville, SC 29606; 864/242-9733; fax 864/242-6957; email Andersen@scacog.org; web www.scacog.org

LENOWISCO Planning District Commission, LENOWISCO RAN (Rural Area Network Broadband Initiative). Contact: Ron Flanary or G.A. "Skip" Skinner, P.O. Box 336, Duffield, VA 24244; 276/431-2206; fax 276/431-2208; email info@lenowisco.org; web www.lenowisco.org or www.ecorridors.vt.edu/pilots/lenowisco

Northern Shenandoah Valley Regional Commission, CAIT-Community Applied Information Technology. Contact: Tom Christoffel or Stephen Kerr, 103 E. Sixth St., Front Royal, VA 22630; 540/636-8800; fax 540/635-4147; email nsvrc@shentel.net; web www.lfpdc7.state.va.us

Tourism

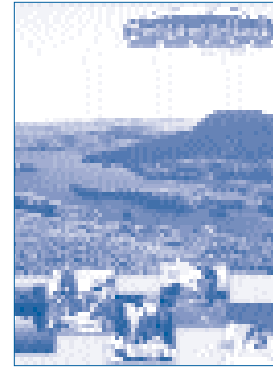
Film, culture, heritage, recreation and theme planning are the mediums through which these projects have launched regional tourism marketing. Using technology and prior experience, regional development organizations are leading tourism programs into new markets.

The **Sonoma County Economic Development Board**, in California, developed **Tourism and Film Marketing in Sonoma County Local Industry Partnerships** to increase promotion of the county as a filming location. The Board, private sector and public sector agreed to separate the county's film and tourism programs. The film program gained resources, a new website, annual workshop, an online nine-city "consolidated filming permit" and aggressive advertising campaign. Results include a 13 percent increase in the local filming payroll and increased television filming values from \$42,000 to \$110,000.

Creating a generic, easy-to-use **Design Guidelines Manual for Coastal Communities** along the

Highway 17 corridor has been key to **Coastal Georgia Regional Development Center's** economic development planning, improving community appearances and promoting rural tourism for the coastal region. The regional development center worked with a private firm to create the manual, in conjunction with the tri-state heritage corridor project (Interstate 95). The manual offers uniform image recommendations such as using themed architecture and signage standards.

Marketing culture as a tourism draw is the foundation of the **Cultural Development Supporting Rural Economic Development in Maine** directive. Developed by the **Eastern Maine Development Corporation**, the directive has assembled resource tools, such as a cultural assets inventory, micro-business plans and successful application to the National Council for the Traditional Arts to host the National Folk Festival in Bangor. Funding has come from the Fund for Folk Culture, U.S. Housing and Urban Development, state and others.



Eastern Maine Development Corporation Maine Highlands Area Brochure.

The **Boundary Waters Canoe Area Interactive Mapping Website** is a recreational and tourism promotional project by the **Arrowhead Regional Development Commission** in Minnesota. The website is designed to serve the Boundary Water area's 180,000 annual recreational users, giving them virtual access to the area's 1,200 miles of waterway routes and 70 miles hiking/skiing trails maintained by the National Forest Service. Detailed topographic maps, campsite locations and portage lengths are among the website's various information items. ●

Award Winners

Sonoma County Economic Development Board, Creating Effective Tourism and Film Marketing in Sonoma County through Local Industry Partnerships. Contact: Ben Stone, 401 College Ave., Suite D, Santa Rosa, CA 95401-5148; 707/565-7170; fax 707/565-7231; email bstone@sonoma-county.org; web www.sonoma-county.org/edb

Coastal Georgia Regional Development Center, Design Guidelines Manual for Coastal Communities. Contact: Vernon Martin, P.O. Box 1917, Brunswick, GA 31521; 912/264-7363 ext. 206; fax 912/262-2313; email vmartin@coastalgeorgiadc.org; web www.coastalgeorgiadc.org

Eastern Maine Development Corporation, Cultural Development Supporting Rural Economic Development in Eastern Maine. Contact: David Cole or John Holden, P.O. Box 2579, Bangor, ME 04402-2579; 207/942-6389; fax 207/942-3548; email jholden@emdc.org; web www.emdc.org

Arrowhead Regional Development Commission, Boundary Waters Canoe Area Interactive Mapping Website. Contact: John Chell or Andrew Hayden, 221 W. First St., Duluth, MN 55802; 218/722-5515; fax 218/529-7592; email ahayden@ardc.org; web www.ardc.org/bwca

Transportation

These regional transportation projects and programs point toward the benefits for rural communities, with emphasis on pedestrian safety, increased community input in planning, better-quality road conditions, growth in intermodal air, water, and inland ports, economic development opportunities and real-time, accurate data.

West Alabama Regional Commission held its second annual **MPO Training Session** for MPO committee members and interested individuals. Two hour-long sessions were conducted. Trainers representing the Alabama Department of Transportation, Federal Highway Administration and the commission/MPO reviewed project funding, financial responsibilities, federal regulations, committee structure, MPO functions, and the life of a federally funded transportation project. Twenty-three people participated in the sessions including ten committee members.

More than 600 Tuscaloosa County elementary schoolchildren participated in **West Alabama Regional Commission** and local partners' **Walk Our Children to School Day** project to make communities more "walkable." The project identified areas needing sidewalks, traffic signals, crossing guards and other safety measures. Two schools have already received new or repainted crosswalks and flashing pedestrian signs. Local organizations involved included law enforcement, health and fire departments, Tuscaloosa Safe Kids, YMCA, housing authority, ambulance services, hospitals and schools.

A partnership of 63 rural cities/towns and 13 counties and the **Northern Arizona Council of**

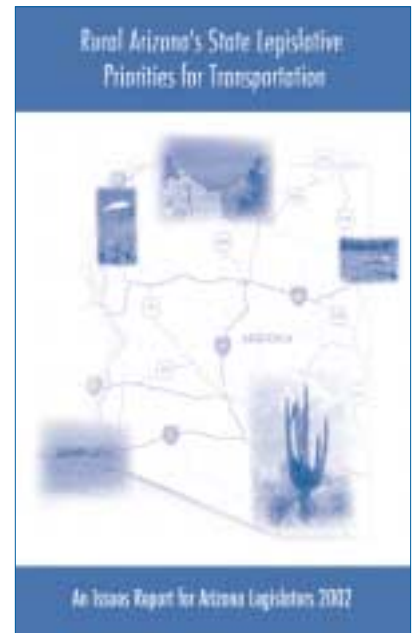
Governments are responsible for developing and funding a new **Rural Transportation Liaison** position. The liaison monitors transportation activities and matters at the Arizona State Legislature and the Arizona State Transportation Board. The determined need came from on-going discussions that began at Arizona's 2001 Rural Transportation Summit.

Champaign County Regional Planning Commission, in Illinois, via its Champaign-Urbana Urbanized Area Transportation Study and accessible pedestrian signal subcommittee, developed the **Guidelines for Selection and Installation of Accessible Pedestrian Signals**. The project began in response to improvement requests from local blind and visually impaired persons. Installation standards were created and 30 intersections were evaluated for pilot installations, which are now underway. Illinois Department of Transportation worked with the subcommittee to develop the standards for statewide adoption.

Growth in the mega-dairy industry in **Kankakee-Iroquois Regional Planning Commission's** rural region has furthered the planning of a **New Rural Interchange** in Indiana. Daily mega-dairy truck traffic averages over 1,000 incoming/outgoing trucks with up to 80,000 pounds of load capacity. The interchange will bring highway access five to nine miles closer to improve road safety. The project has support from the Indiana Department of Transportation, some dairies have committed land donations and visitor center planning is underway.

Aimed at injecting \$2.3 million into infrastructure improvements and diversifying industrial growth, the **Kankakee-Iroquois Regional**

Planning Commission's Rail Spur to County-Based Industrial Park project has brought city and county leaders together to provide leverage funding. The 4,890 foot rail spur will provide a local industrial park with rail access to compliment existing rail, water, sewer, electricity and facility improvements. The project was awarded \$1,285,600 from the U.S. Economic Development Administration and \$700,000 in private investment commitments.



This report highlights transportation priorities for rural Arizona.

The **Region XII Council of Governments** and partners used smart growth planning techniques when they created the **Iowa Highway 44 Coordinated Transportation and Land Use Plan**. The 12 co-sponsoring organizations developed the plan to be used as a corridor preservation and transportation planning guidance tool for two regional planning organizations, the Des Moines metropolitan transportation planning organizations (MPOs) and the Iowa Department of Transportation. Total project funding was \$93,300.

The 15 existing **Kentucky Area Development Districts**, in cooperation with the Kentucky Transportation Cabinet and the Federal Highway Administration, are



South Delta Mississippi Regional Port of Greenville All-Weather Intermodal Transfer Facility.

performing the tasks needed to complete the **Kentucky GPS Roadway Centerline Data Collection Program**. The program goal is to generate a complete, two-meter accuracy, roadway centerline map, which will be used as the state's transportation base map. All 120 counties of the Commonwealth are scheduled for completion by December 2003.

Arrowhead Regional Development Commission, in Minnesota, with funding from the Federal Highway Administration, the Minnesota Department of Transportation and Duluth Airport Authority, wrote and distributed the **Duluth Airport Land Use Plan**. The plan provides the airport authority and adjacent jurisdictions with a guide for determining developable lands, compatible land use strategies and future airport roadway needs. The airport is estimated to indirectly contribute over \$100 million annually to the city's economy and provides 2,900 jobs.

Making Mississippi's **Port of Greenville All-Weather Intermodal Transfer Facility** a year round productive port, required the **South Delta**

Planning and Development District, Inc. and local partners to obtain \$4,500,000 in grants and loans to fund the construction of a fourth barge-berth and a covered bridge crane. The

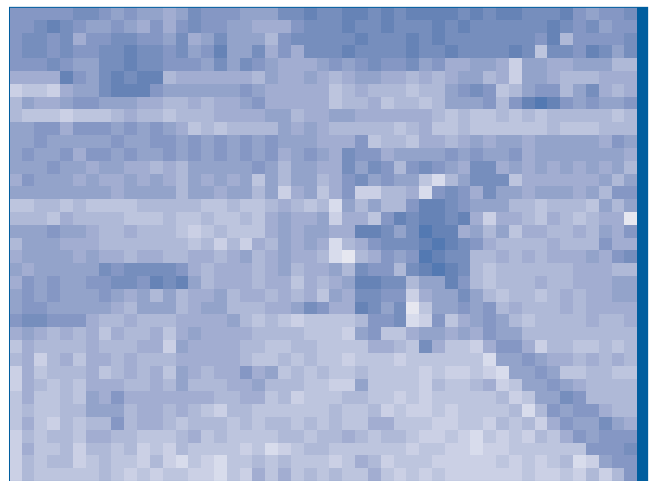
additions allow the port to provide services regardless of weather conditions, giving the region's port-dependent businesses expansion opportunities and to indirectly foster regional economic growth.

The **North Carolina Department of Transportation** established a network for **North Carolina Rural Planning Organizations**, under state legislative authority and with \$1,500,000 in matched funding. Complementing the pre-existing MPO network, this creates a unified voice for rural communities on transportation issues and demonstrates a true statewide transportation planning system. The department is providing a two-year training and technical assistance program and adding community planners to its statewide planning engineering staff support initiative.

The **First District Association of Local Governments** in South Dakota used Global Positioning Systems (GPS) and Geographical Information Systems (GIS) to assist with the completion of the **City of Watertown Master Trail Plan** project. The city pursued the plan to pro-

mote healthier living, improve pedestrian and bicycle safety, promote tourism, enhance scenic views and provide convenient trail access. The maps outline existing trails, attributes and trail options appear with cost projections.

Finding the cause of traffic congestion is the focus of the **Lower Rio Grande Valley Council MPO's Improved 2001 Congestion Management System** in Texas. The system, using Global Positioning Systems (GPS), documents travel times along various routes into a congestion index. The index is done seasonally and chronicles, every two seconds, vehicle positions and speeds coupled with 24,000 roadway pictures. The system is part of a federally mandated study to help the region prioritize congestion mitigation recommendations. ●



More than 600 Tuscaloosa County elementary schoolchildren participated in West Alabama Regional Commission and local partners' Walk Our Children to School Day project to make communities more "walkable."

continued on page 20

Award Winners

West Alabama Regional Commission, Metropolitan Planning Organization (MPO) Training Sessions.

Contact: David Norris, 4200 Highway 69 North, Suite 1, Northport, AL 35473-2048; 205/333-2990; fax 205/333-2713; email dnorris@adss.state.al.us; web www.wapdc.org

West Alabama Regional Commission, Walk Our Children to School Day. Contact: Kathy Banks, 4200 Highway 69 North, Suite 1, Northport, AL 35473-2048; 205/333-2990; fax 205/333-2713; email kbanks@adss.state.al.us; web www.wapdc.org

Northern Arizona Council of Governments, Rural Transportation Liaison. Contact: Joe Hughes, 1820 West Washington, Phoenix, AZ 85007; 602/258-5786; fax 602/253-3874; email jhughes@mg.state.az.us; web www.nacog.org

Champaign County Regional Planning Commission, Guidelines for Selection and Installation of Accessible Pedestrian Signals in Champaign-Urbana. Contact: John Dimit or Rita Morocoima-Black, P.O. Box 17760, Urbana, IL 61803-7760; 217/328-3313; fax 217/328-2426; email rblack@ccrpc.org; web <http://ccrpc.org/CUUATS/index.html>

Kankakee-Iroquois Regional Planning Commission, New Rural Interchange. Contact: Chris Larson, P.O. Box 127, Monon, IN 47959; 219/253-6658; fax 219/253-6659; email clarson@urhere.net

Kankakee-Iroquois Regional Planning Commission, Rail Spur to County-Based Industrial Park. Contact: Chris Larson, P.O. Box 127, Monon, IN 47959; 219/253-6658; fax 219/253-6659; email clarson@urhere.net

Region XII Council of Governments, Iowa Highway 44 Coordinated Transportation and Land Use Planning. Contact: Richard Hunsaker, Joe Behrens or Chris Whitaker, P.O. Box 768, Carroll, IA 51401; 712/792-9914; fax 712/792-1751; email rhunsaker@region12cog.org; web www.region12cog.org

Kentucky Area Development Districts, Kentucky GPS Roadway Centerline Data Collection Program. Contact: Jack Couch, 420 Capitol Ave., Frankfort, KY 40601; 502/875-2515; fax 502/875-0946; email jack@kycadd.org; web www.kycadd.org

Arrowhead Regional Development Commission, Duluth Airport Land Use Plan. Contact: Andy McDonald or John Chell, 221 W. First St., Duluth, MN 55802; 218/722-5515; fax 218/529-7592; email amcdonald@ardc.org; web www.ardc.org

South Delta Planning and Development District, Inc., Port of Greenville All-Weather Intermodal Transfer Facility. Contact: William Haney, Jr. or Allyson Denson, P.O. Box 1776, Greenville, MS 38701; 662/335-6889; fax 662/335-5175; email sdpddwia@tecinfo.com

North Carolina Department of Transportation, North Carolina Rural Planning Organizations. Contact: Lyndo Tippet or Roger Sheats, 1501 Mail Service Center, Raleigh, NC 27699-1501; 919/733-2520; fax 919/715-4088; email rsheats@dot.state.nc.us; web www.ncdot.org

First District Association of Local Governments (First District), City of Watertown Master Trail Plan. Contact: Dick Enderstrom or Todd Keys, P.O. Box 1207, Watertown, SD 57201; 605/882-5115; fax 605/882-5049; email todd@1stdistrict.org

Lower Rio Grande Valley Development Council Metropolitan Planning Organization (MPO), Improved 2001 Congestion Management System. Contact: Ken Jones, 311 N. 15th St., McAllen, TX 78501-4705, 956/682-3481; fax 956/631-4670; email knjones@lrgvdc.org; web www.lrgvdc.org

Workforce Development

These programs and projects focus on labor force analysis, providing workforce services to isolated communities, dislocated workers and upgrading job training facilities. The resulting studies and services give communities labor information for attracting business relocation and expansions.

Northeast Georgia Regional Development Center and the region's 12-county workforce investment board expanded access to one-stop centers when they dispatched the **Northeast Georgia Workforce Development Mobile Labs**. The two mobile labs, large camper-like vehicles, contain computer workstations, copier/fax machines, cell phones, VCR/TVs and counseling areas for customer interviews. The labs are loaded with workforce related software. The labs have provided on-site assistance at more than 15 plant closures and summer youth employment worksites.



Northeast Georgia RDC Mobile Workforce Lab.

The **Northern Kentucky Area Development District** made a workforce investment for the future when it created the **Northern Kentucky Executive Search Service**. The service assists cities, counties, nonprofit agencies and special districts with recruitment of highly qualified persons to serve in key organizational roles. Funding comes from service fees (averaging \$3,500) and is subsidized by the development district. Placements already made include

police chiefs and public safety center directors.

The magnitude of **South Delta Planning and Development District, Inc.'s Model Workforce Investment Network** in Mississippi continues to grow. Construction of a \$1,000,000 job center building in Tunica County led to construction of its two computer classrooms containing 60 computers with funds from the Delta Workforce Investment Area and a governor's workforce innovation award. In addition, the workforce investment network is renovating a building to house a full-service dislocated workers center for the entire district.

Missouri's **Meramec Regional Partnership 20-County Labor Study** was led by **Meramec Regional Planning Commission** with support from U.S. Department of Agriculture and U.S. Economic Development Administration grants and local matches from 24 partnering entities. A consultant was hired to conduct wage/benefit, employer, workforce and education/training surveys and provide demographic analysis. Fifty-six reports were generated. Some results revealed ample workforce availability, wages were reasonable or competitive and employers rated worker attitudes and productivity very high.

The **North Country Council**, in rural New Hampshire, conducted the **North Country Labor Utilization Study** to develop a labor supply-side strategy and reevaluate the region's (51 towns) labor force status. The study identified labor shortages and explored the level of underemployment and volume of non-livable wage jobs, according to worker satisfaction, labor skills and education. Results of the study have been quoted in the governor's economic development strategy. ●

Award Winners

Northeast Georgia Regional Development Center, Northeast Georgia Workforce Development Mobile Labs. Contact: James Dove, 305 Research Dr., Athens, GA 30605-2795; 706/369-5650; fax 706/369-5792; email jimdove@negrdc.org; web www.negrdc.org

Northern Kentucky Area Development District, Northern Kentucky Area Development District Executive Search Service. Contact: John Mays or Lisa Cooper, 22 Spiral Dr., Florence, KY 41042; 859/283-1885; fax 859/283-8178; email lisa.cooper@nkadd.org; web www.nkadd.org

South Delta Planning and Development District, Inc., Model Workforce Investment Network Job Centers. Contact: William Haney, Jr. or Bob Booth, P.O. Box 1776, Greenville, MS 38701; 662/335-6889; fax 662/335-5175; email sdpddwia@tecinform.com

Meramec Regional Planning Commission, Meramec Regional Partnership 20-County Labor Study. Contact: Richard Cavender, 4 Industrial Dr., St. James, MO 65559; 573/265-2993; fax 573/265-3550; email rac@meramecregion.org; web www.missourimeramecregion.org

North Country Council, North Country Labor Utilization Study. Contact: Mike King or Jeffrey Hayes, 107 Glessner Rd., Bethlehem, NH 03574; 603/444-6303; fax 603/444-7588; email jhayes@ncia.net; web www.nccouncil.org

Youth

Award Winners

Sonoma County Economic Development Board, Youth Business Week. Contact: Ben Stone, 401 College Ave., Suite D, Santa Rosa, CA 95401-5148; 707/565-7170; fax 707/565-7231; email bstone@sonoma-county.org; web www.sonoma-county.org/edb

Cumberland Valley Area Development District, Teen Leadership and Mentoring Program. Contact: John Bruner of Betty Calhoun, P.O. Box 1740, London, KY 40743; 606/864-7391; fax 606/864-7631; email bettyc@cvadd.org; web www.cvadd.org

South Delta Planning and Development District, Inc., Summer Select (Student, Education, Leadership, Employment, Citizenship Training) Program. Contact: William Haney, Jr. or Bob Booth, P.O. Box 1776, Greenville, MS 38701; 662/335-6889; fax 662/335-5175; email sdpddwia@tecinfo.com

Kerr-Tar Regional Council of Governments, North Central Alliance for Youth (NCAAY). Contact: Neil Mallory or Alex Fonvielle, P.O. Box 709, Henderson, NC 27536; 252/436-2040; fax 252/436-2055; email afonvielle@kerrtarco.org; web www.kerrtarco.org

Texoma Council of Governments Area Agency on Aging, Voices Across the Ages. Contact: Frances Pelley or Kathy Scott, 1117 Gallagher, Suite 200, Sherman, TX 75090; email kscott@texoma.cog.tx.us; web www.texoma.cog.tx.us

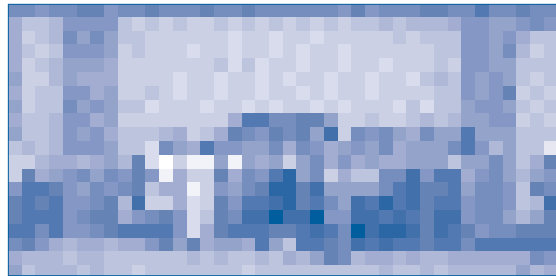
The role of regional development organizations in these programs ranges from supporting summer youth employment services to hosting career exploration events to addressing juvenile delinquencies. Program outcomes have been positive and prove to be a community investment for the future.

The **Sonoma County Youth Business Week**, hosted and funded by the **Sonoma County Economic Development Board** and local public/private workforce development organizations, teaches young people about the world of employment and entrepreneurship. Teens interact with local business leaders and educators to learn about the challenges of operating a business, training opportunities, education and local employment. The program offers junior college credits and scholarship opportunities. One third of the attending youth are minority.

Partnering with local colleges, the **Cumberland Valley Area Development District** is working to provide high school seniors with a community leadership learning opportunity and participation in the **Teen Leadership and Mentoring Program**. Students cultivate an understanding of volunteerism, ethical decision-making, strengthening leadership abilities, career development, time management, business etiquette and goal-setting. Students also network with business, education, ministry, medical and government professionals. Twenty-four post-secondary scholarships have been awarded to teens who completed the program.

Low-income youth participating in the **Summer Select Program**, offered by Mississippi's **South Delta Planning**

and Development District, Inc. and the 14-county region's workforce partners, attend academic and life skills



South Delta Summer Select Group in Mississippi.

classes four hours a day and work four hours a day for a six-week period. The young people receive problem solving assistance from team leaders for the next ten months via monthly contacts. Youth meet quarterly for team activities, such as mural painting.

The **North Central Alliance for Youth** is the collaborative effort of the **Kerr-Tar Regional Council of Governments** and juvenile crime prevention councils representing six rural counties in north central North Carolina. The alliance addresses local problems related to juvenile delinquency. Funding of \$886,512 from the Governor's Crime Commission and a local match of \$295,504 is being used to develop and operate two juvenile structured day programs and emergency shelter care services.

Voices Across the Ages, a program by the **Texoma Council of Governments** in Texas, jointly improves the reading abilities of incarcerated young men, offers senior volunteer opportunities and gives local children a learning tool for reading. Foster grandparents volunteer to help improve state school male youth reading skills. The young men then record books on tape. The tapes and companion books are sent to the region's Head Start programs for children to listen and read along. ●

State Index

▶ Alabama			
Alabama Association of Regional Councils	4		
East Alabama RP&DC	3		
Lee-Russell COGs'- Area Agency on Aging	3		
South Central Alabama Development Commission - Area Agency on Aging	3		
West Alabama Regional Commission	6, 18		
▶ Arizona			
Northern Arizona Council of Governments	6, 12, 18		
Arizona Public Service	13		
▶ California			
Sierra Economic Development District	4		
Sonoma County Economic Development Board	17, 22		
▶ Connecticut			
New London Development Corporation	6		
▶ Florida			
East Central Florida Regional Planning Council and Central Florida Regional Planning Council	6		
▶ Georgia			
Central Savannah River Area Regional Development Center	9		
Coastal Georgia Regional Development Center	17		
McIntosh Trail Regional Development Center	9		
Middle Georgia Regional Development Center	8		
North Georgia Regional Development Center and Coosa Valley Regional Development Center	9		
Northeast Georgia Regional Development Center	21		
South Georgia Regional Development Center	8, 15		
▶ Illinois			
Champaign County Regional Planning Commission	18		
Illinois Institute for Rural Affairs	15		
Southeastern Illinois Regional Planning and Development Commission	6		
Western Illinois Regional Council	9		
▶ Indiana			
Indiana 15 Regional Planning Commission	9		
Kankakee-Iroquois Regional Planning Commission	18		
▶ Iowa			
Region XII Council of Governments	18		
Southern Iowa Council of Governments	12		
▶ Kentucky			
Barren River Area Development District	13		
Buffalo Trace Area Development District	15		
Gateway Area Development District	9		
Kentucky Area Development Districts	19		
Kentuckiana Regional Planning and Development Agency	10, 15		
Lake Cumberland Area Development District	4		
Lincoln Trail Area Development District	2, 13		
Northern Kentucky Area Development District	21		
Pennyrile Area Development District	10		
▶ Maine			
Androscoggin Valley Council of Governments	4		
Eastern Maine Development Corporation	17		
▶ Minnesota			
Arrowhead Regional Development Commission	15, 17, 19		
Community Reinvestment Fund, Inc.	4		
Mid-Minnesota Development Commission	13		
Northwest Regional Development Commission	7, 15		
Region Nine Development Commission	4		
▶ Mississippi			
South Delta Planning and Development District, Inc.	19, 21, 22		
▶ Missouri			
Meramec Regional Planning Commission	21		
Southeast Missouri Regional Planning and Economic Development Commission	13		
▶ Nebraska			
River Country Economic Development District	8		
▶ New Hampshire			
North Country Council	21		
▶ North Carolina			
Kerr-Tar Regional Council of Governments	12, 22		
Land-of-Sky Regional Council, Region B	10		
North Carolina Department of Transportation	10, 19		
Northwest Piedmont Council of Governments	2, 13		
▶ Ohio			
Ohio Valley Regional Development Commission	4		
▶ Pennsylvania			
North Central Pennsylvania Regional Planning and Development Commission	4, 7		
▶ South Carolina			
Berkeley-Charleston-Dorchester Council of Governments	5, 10		
Catawba Regional Council of Governments	10		
Lower Savannah Council of Governments	5		
Santee-Lynches Regional Council of Governments	15		
South Carolina Appalachian Council of Governments	8, 13, 16		
▶ South Dakota			
East River Electric Power Cooperative, Inc.	5		
First District Association of Local Governments (First District)	19		
Northeast Council of Governments	7		
▶ Tennessee			
South Central Tennessee Development District	5		
Upper Cumberland Development District	7		
▶ Texas			
Capital Area Planning Council	12		
Golden Crescent Regional Planning Commission	5		
Lower Rio Grande Valley Development Council - Area Agency on Aging and Metropolitan Planning Organization	2, 19		
South Plains Association of Governments - Area Agency on Aging	2		
Texoma Council of Governments - Area Agency on Aging	22		
▶ Virginia			
LENOWISCO Planning District Commission	16		
Mount Rogers Planning District Commission	5		
Northern Shenandoah Valley Regional Commission	7, 16		

Calendar

October

- ▶ **October 8, 2002**
NALGEP, NADO Research Foundation, and local governments with support from EPA
Brownfields Opportunities for Western Communities
Aberdeen, South Dakota
202/638-6254
- ▶ **October 17-22, 2002**
NADO Research Foundation's Economic Development Finance Service
Annual Loan Fund Training Institute
Hilton Alexandria, Old Town
Old Town Alexandria, VA
202/624-7806

November

- ▶ **November 4-8, 2002**
Southern Rural Development Center
Rural Health Institute
Talladega, Alabama
662/325-3207
- ▶ **November 13-15, 2002**
National Brownfields 2002 Conference
Charlotte, North Carolina
412/261-0710 ext. 32
- ▶ **November 13-15, 2002**
National Business Incubation Association
Fall Training Institute
Orlando, Florida
740/593 4331
- ▶ **November 15-16, 2002**
The Kerr Center
Future Farms 2002 Conference
NCED Marriott Conference Center
Norman, Oklahoma
908/647-9123
- ▶ **November 18-20, 2002**
2002 Groundwater Foundation Annual Conference
Eugene, Oregon
402/434-2740
- ▶ **November 16, 2002**
Center for Rural Affairs
Annual Meeting
College Park
Grand Island, Nebraska
308/381.5555

**National Association of Development
Organizations Research Foundation**
400 North Capitol Street, NW, Suite 390
Washington, DC 20001

*Forwarding and return postage guaranteed.
Address service requested.*

NON-PROFIT
US POSTAGE PAID
PERMIT # 02921
Southern MD

**Economic Development Finance Service
Annual Loan Fund Training Institute
October 17- 22, 2002**
Hilton Alexandria, Old Town, Old Town Alexandria, VA